



FOR LEASE

Former Sports Medicine Building

1551 NW 54TH ST | SEATTLE, WA



FLOOR 2 10,176 SF (dividable to 450 SF)

LOCATED directly across street from Swedish Ballard Medical Center

ADJACENT to a pharmacy

2 STORY elevator-served medical/office building

VALUABLE existing medical improvements

AMPLE surface and covered parking with load/unload area

VIBRANT, growing neighborhood near Market Street and Old Ballard Avenue with numerous amenities within easy walking distance

ADA accessible

For more information or to schedule a tour, contact exclusive agent.

TODD BATTISON
206.296.9621
todd.battison@kiddermathews.com

KIDDER.COM

Kidder Mathews

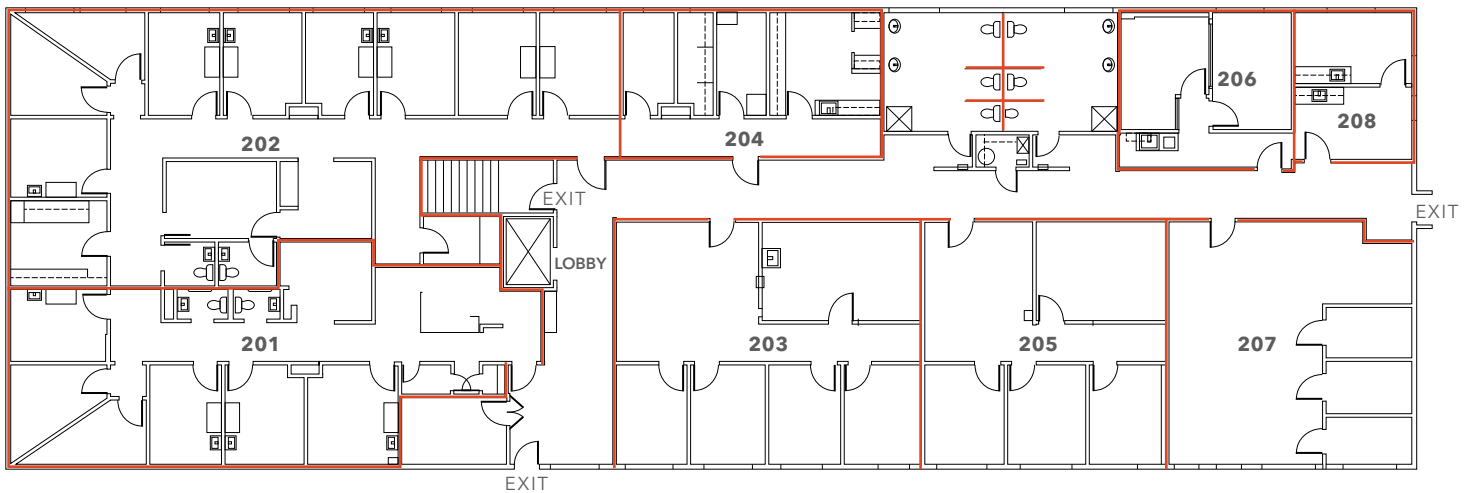
This information supplied herein is from sources we deem reliable. It is provided without any representation, warranty, or guarantee, expressed or implied as to its accuracy. Prospective Buyer or Tenant should conduct an independent investigation and verification of all matters deemed to be material, including, but not limited to, statements of income and expenses. Consult your attorney, accountant, or other professional advisor.

FOR LEASE

Former Sports Medicine Building

1551 NW 54TH ST | SEATTLE, WA

Floor 2



For more information
or to schedule a tour,
contact exclusive agent.

TODD BATTISON
206.296.9621
todd.battison@kidder.com

KIDDER.COM

This information supplied herein is from sources we deem reliable. It is provided without any representation, warranty, or guarantee, expressed or implied as to its accuracy. Prospective Buyer or Tenant should conduct an independent investigation and verification of all matters deemed to be material, including, but not limited to, statements of income and expenses. Consult your attorney, accountant, or other professional advisor.

