

**FOR LEASE**

5306 - 5312 Pacific Highway E  
Fife, WA 98424



# FIFE PLAZA

Lisa Tallman

First Western Properties—Tacoma Inc. | 253.472.0404  
6402 Tacoma Mall Blvd, Tacoma, WA 98409 | fwp-inc.com




FOR LEASE:

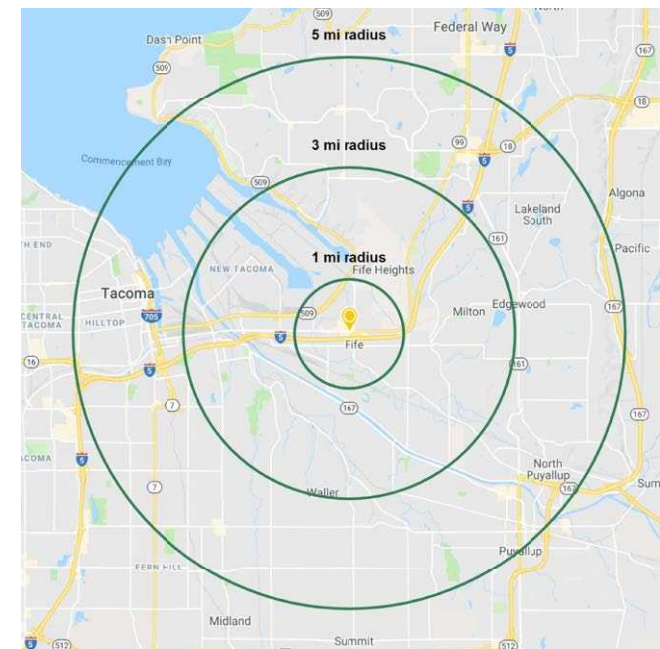
4,118 +/- SF RETAIL AND WAREHOUSE \$15.00 PLUS NNN

- 2 grade level doors
- Exceptional I-5 visibility
- Exceptional parking - 536 parking spaces
- Pylon Signage Available

NEARBY TENANTS



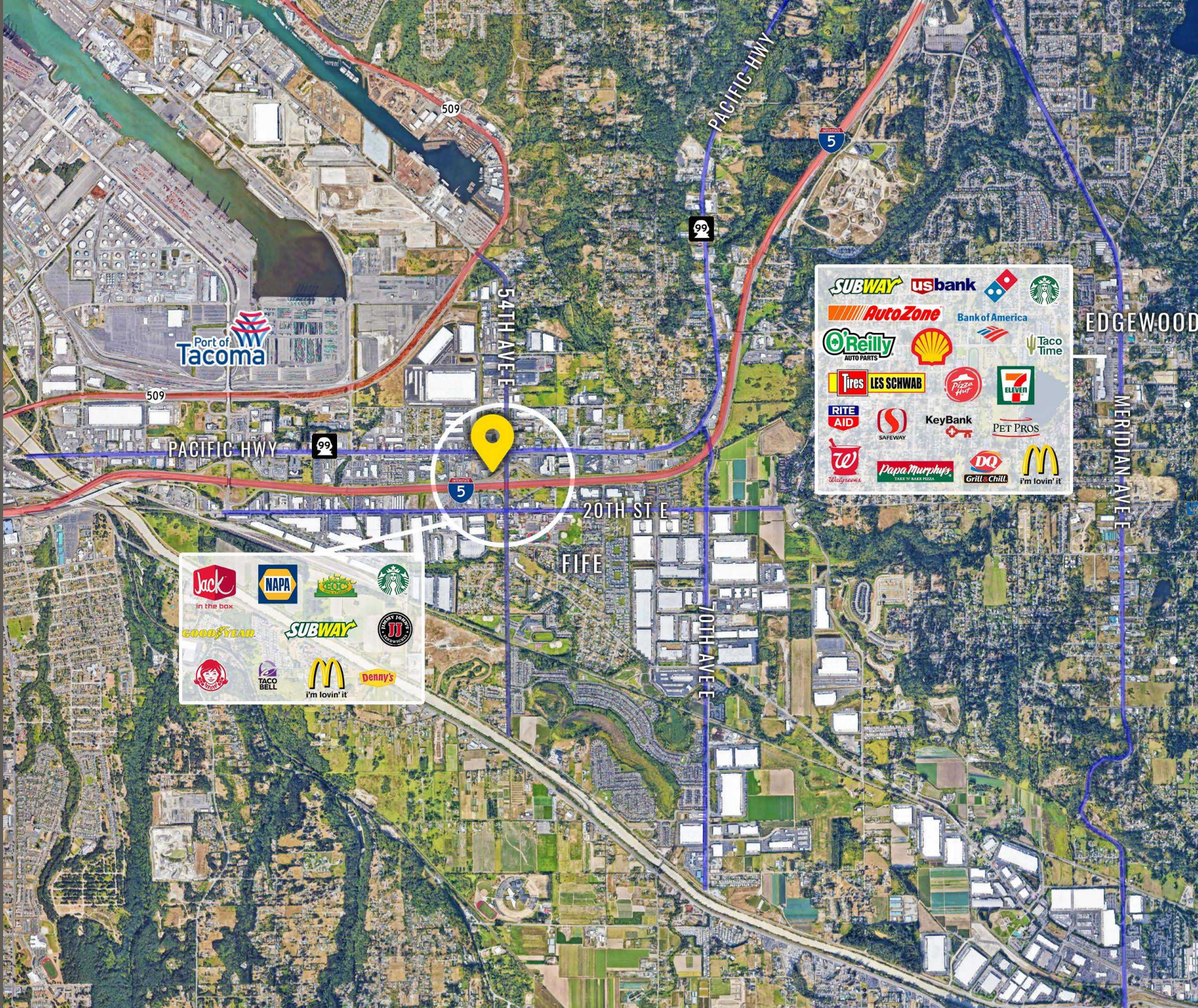
Regis - 2022	 Population	 Average HH Income	 Daytime Population
Mile 1	7,162	\$74,231	10,634
Mile 3	50,503	\$93,766	39,009
Mile 5	215,845	\$92,315	165,738



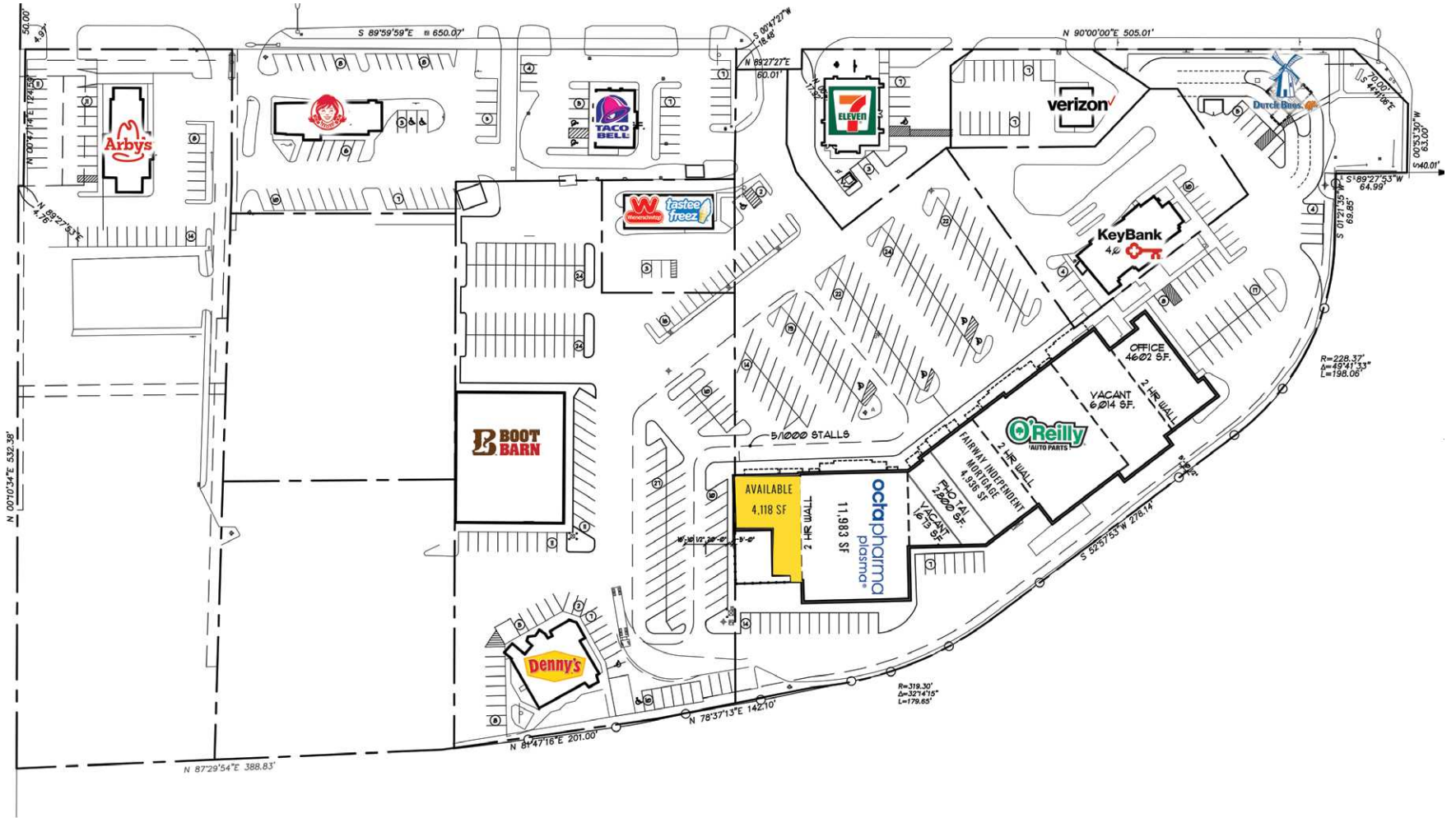
SUMMARY



LOCATION AERIAL



# SITE PLAN



TACOMA | KIRKLAND | PORTLAND | SEATTLE



RELATIONSHIP FOCUSED. RESULTS DRIVEN.

LISA TALLMAN

253.471.5504

[lisa@firstwesternproperties.com](mailto:lisa@firstwesternproperties.com)



First Western Properties—Tacoma Inc. | 253.472.0404  
6402 Tacoma Mall Blvd, Tacoma, WA 98409 | [fwp-inc.com](http://fwp-inc.com)

© First Western Properties, Inc. DISCLAIMER: The above information has been secured from sources believed to be reliable, however, no representations are made to its accuracy. Prospective tenants or buyers should consult their professional advisors and conduct their own independent investigation. Properties are subject to change in price and/or availability without notice.