



PEARL APARTMENTS RETAIL SPACE

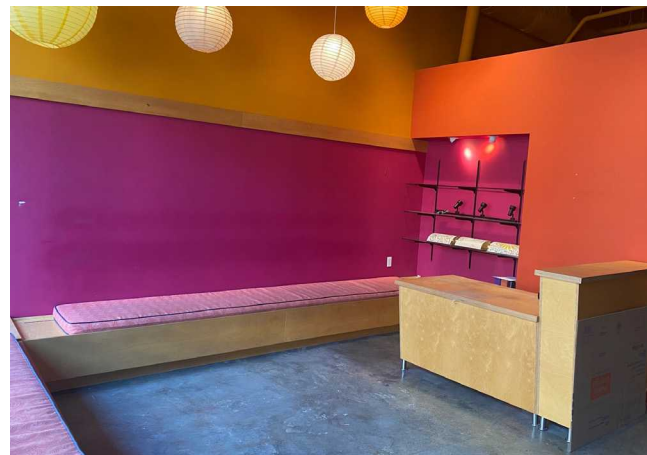
FOR LEASE | 1530 15TH AVENUE | SEATTLE, WA

 **Kidder
Mathews**

FOR LEASE

Pearl Apartments Retail Space

1530 15TH AVENUE, SEATTLE



TURNKEY fitness space available

2,352 sf available

FORMER Yoga Arts space with two studio's, reception area, and large bathrooms/ changing rooms

FIFTEEN on-site customer parking stalls

JOIN Tenants Plenty of Clouds, Sakana Sushi, and Belle By Nancy Salon

83,489

POPULATION WITHIN A 1-MILE RADIUS

\$77,368

AVERAGE INCOME WITHIN A 1-MILE RADIUS

60.3%

RESIDENTS THAT HOLD COLLEGE DEGREES

JASON MILLER

Vice President

206.296.9649

jason.miller@kidder.com

KIDDER.COM

This information supplied herein is from sources we deem reliable. It is provided without any representation, warranty, or guarantee, expressed or implied as to its accuracy. Prospective Buyer or Tenant should conduct an independent investigation and verification of all matters deemed to be material, including, but not limited to, statements of income and expenses. Consult your attorney, accountant, or other professional advisor.

km Kidder Mathews

FOR LEASE

Pearl Apartments Retail Space

1530 15TH AVENUE, SEATTLE

Site Plan



KIDDER.COM

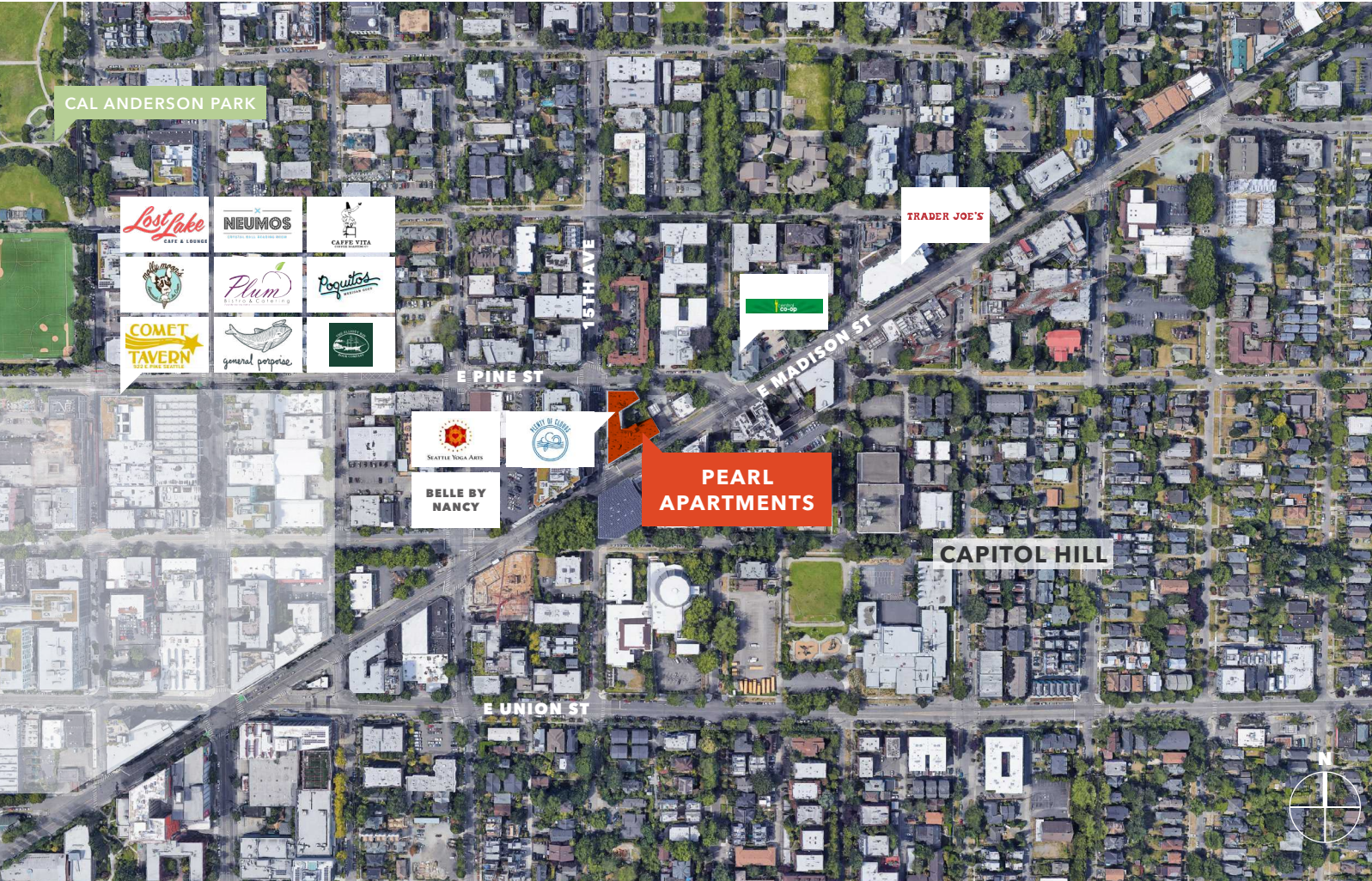
This information supplied herein is from sources we deem reliable. It is provided without any representation, warranty, or guarantee, expressed or implied as to its accuracy. Prospective Buyer or Tenant should conduct an independent investigation and verification of all matters deemed to be material, including, but not limited to, statements of income and expenses. Consult your attorney, accountant, or other professional advisor.

km Kidder Mathews

FOR LEASE

Pearl Apartments Retail Space

1530 15TH AVENUE, SEATTLE



15,127
TRAFFIC COUNTS

98
WALK SCORE

\$90,300
AVERAGE HH INCOME WITHIN 1
MILE (2020)

83,489
POPULATION WITHIN 1 MILE
(2020)

KIDDER.COM

This information supplied herein is from sources we deem reliable. It is provided without any representation, warranty, or guarantee, expressed or implied as to its accuracy. Prospective Buyer or Tenant should conduct an independent investigation and verification of all matters deemed to be material, including, but not limited to, statements of income and expenses. Consult your attorney, accountant, or other professional advisor.

km Kidder
Mathews

FOR LEASE

Pearl Apartments Retail Space

1530 15TH AVENUE, SEATTLE

DEMOGRAPHICS

POPULATION

	0.25 Mile	0.5 Mile	1 Mile
Estimated Population (2020)	7,270	21,976	83,489
Projected Population (2025)	7,741	23,373	88,940
Census Population (2010)	4,659	13,423	57,381
Projected Annual Growth (2020 - 2025)	471 (1.3%)	1,397 (1.3%)	5,451 (1.3%)
Historical Annual Growth (2010 - 2020)	2,611 (5.6%)	8,553 (6.4%)	26,108 (4.5%)

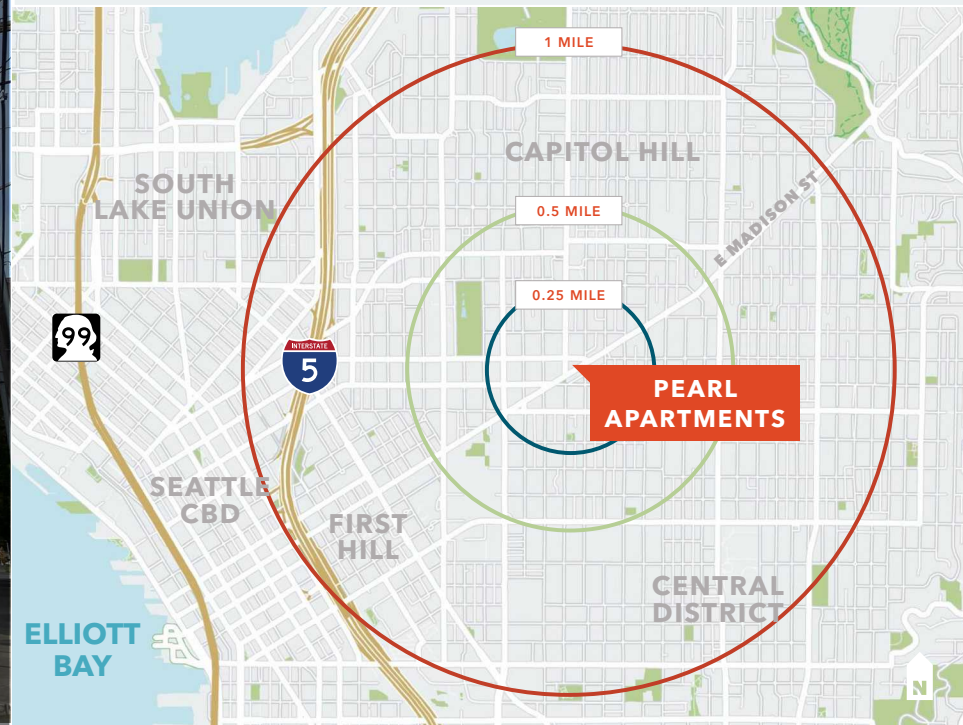
HOUSEHOLDS

Estimated Households (2020)	4,777	13,105	49,637
Projected Households (2025)	5,120	14,052	53,426
Projected Annual Growth (2020 - 2025)	343 (1.4%)	947 (1.4%)	3,789 (1.5%)
Historical Annual Change (2000 - 2020)	2,444 (5.2%)	6,722 (5.3%)	19,807 (3.3%)
Estimated Average HH Income (2020)	\$91,415	\$90,300	\$90,300
Projected Average HH Income (2025)	\$106,711	\$105,187	\$105,187

DAYTIME DEMOGRAPHICS

Total Businesses	474	1,692	7,143
Total Employees	3,555	11,837	72,326

83,489	\$90,300	1.3%
ESTIMATED POPULATION	AVERAGE HH INCOME	POPULATION GROWTH



KIDDER.COM

This information supplied herein is from sources we deem reliable. It is provided without any representation, warranty, or guarantee, expressed or implied as to its accuracy. Prospective Buyer or Tenant should conduct an independent investigation and verification of all matters deemed to be material, including, but not limited to, statements of income and expenses. Consult your attorney, accountant, or other professional advisor.

km Kidder Mathews

Be a part of Capitol Hill



KIDDER.COM

This information supplied herein is from sources we deem reliable. It is provided without any representation, warranty, or guarantee, expressed or implied as to its accuracy. Prospective Buyer or Tenant should conduct an independent investigation and verification of all matters deemed to be material, including, but not limited to, statements of income and expenses. Consult your attorney, accountant, or other professional advisor.

km Kidder Mathews