

RETAIL / OFFICE  
FOR LEASE

# SARATOGA

**HIGH TRAFFIC RETAIL/OFFICE DOWNTOWN**

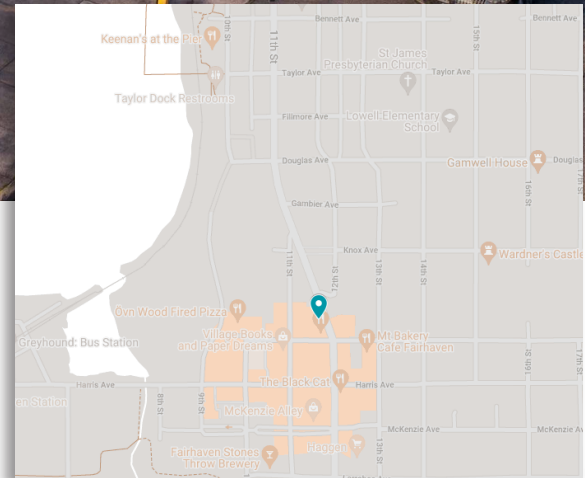
**1132 FINNEGAN WAY, BELLINGHAM**



**PRICE \$18/SF/YEAR  
+ NNN + CONDO DUES**

**1132 FINNEGAN WAY - 970 S.F.**

- Street level entrance
- Prime downtown Fairhaven location
- Open floorplan
- Close to amenities



**Corrie Mitchell**  
**corrie@saratogacom.com**  
**360.610.4980**

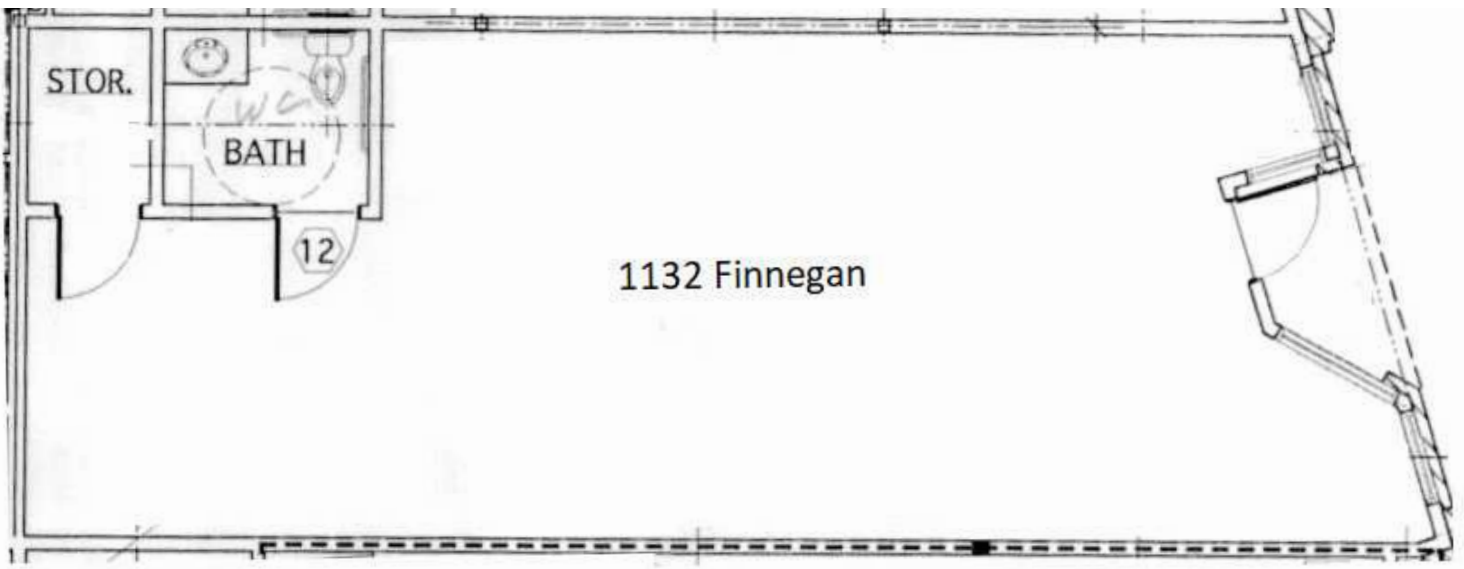
**www.saratogacom.com**  
**228 E CHAMPION, STE 102, BELLINGHAM, WA 98225**

INFORMATION CONTAINED HEREIN HAS BEEN OBTAINED FROM SOURCES DEEMED RELIABLE, BUT NOT GUARANTEED. LESSEE TO VERIFY.



# 1132 FINNEGAN WAY, BELLINGHAM

RETAIL / OFFICE SPACE FOR LEASE



PROPERTY LOCATION