

# Kent Business Center, Bldg A

25422 74th Avenue S  
Kent, WA 98032

## For Sublease



### Sublease highlights

- >> 4,080 SF Shell
- >> Approx. 2,000 SF Office
- >> 2 GL doors
- >> Kitchenette
- >> 6 private offices
- >> 2.86/1,000 SF parking ratio
- >> Master Lease expires May 31, 2025

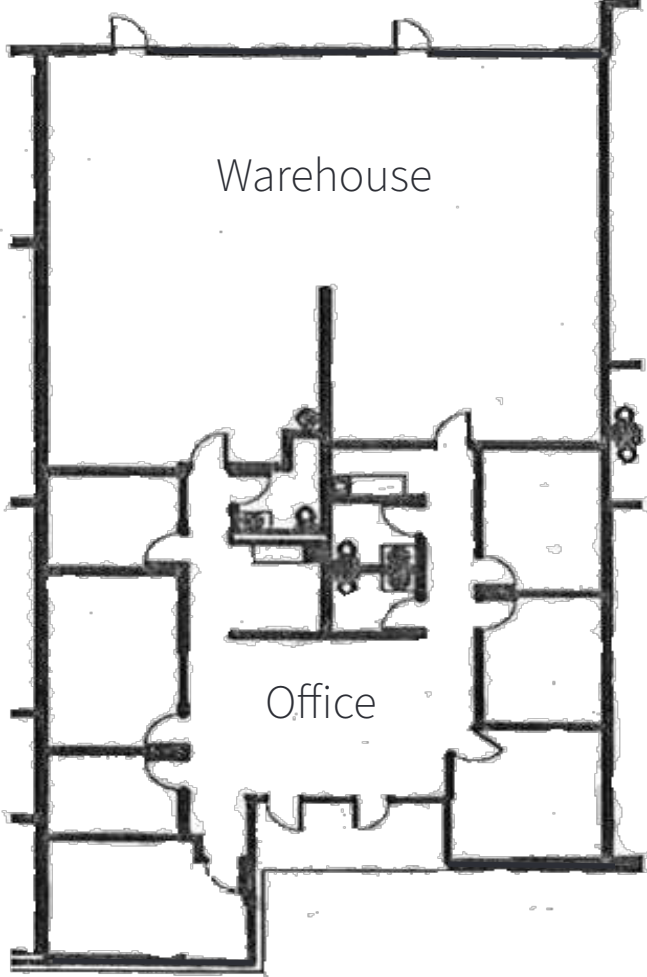
### Location highlights

- >> Quick access to SR-167, SR-516 & downtown Kent
- >> Close to amenities and Kent Station



# Kent Business Center, Bldg A

25422 74th Avenue S  
Kent, WA 98032



**Contacts:** Connor Raffety Associate Broker +1 206 437 1006 connor.raffety@jll.com  
Scott Carter Managing Director +1 425 761 5880 scott.carter@jll.com