

THE LAKE UNION BUILDING  
OPPORTUNITY TO LEASE  
A BEAUTIFUL OFFICE ON LAKE UNION  
IN THE HEART OF SEATTLE

OWNED BY



EXCLUSIVELY LEASED BY



# SCIENCE SHOWS BEING NEAR WATER CAN MAKE YOU HAPPIER, HEALTHIER & BETTER AT WHAT YOU DO.

ADDRESS	1700 Westlake Ave N, Seattle, WA 98109	
STORIES	7	
TOTAL SF	97,733 SF	
AVAILABLE SF	Suite 300	6,629 SF
	Suite 350	2,932 SF
	Suite 400	5,784 RSF (sublease)
	Suite 500	13,855 RSF (full floor)
	Suite 600	9,989 SF (divisible)
PARKING	2/1,000 SF, covered and surface available	
MOORAGE	Available for vessels up to 66 FT in length	

## Building Features

Exterior windows with smart glass technology

[LEARN MORE](#)

Exterior and front entrance upgrades with fully-renovated lobby

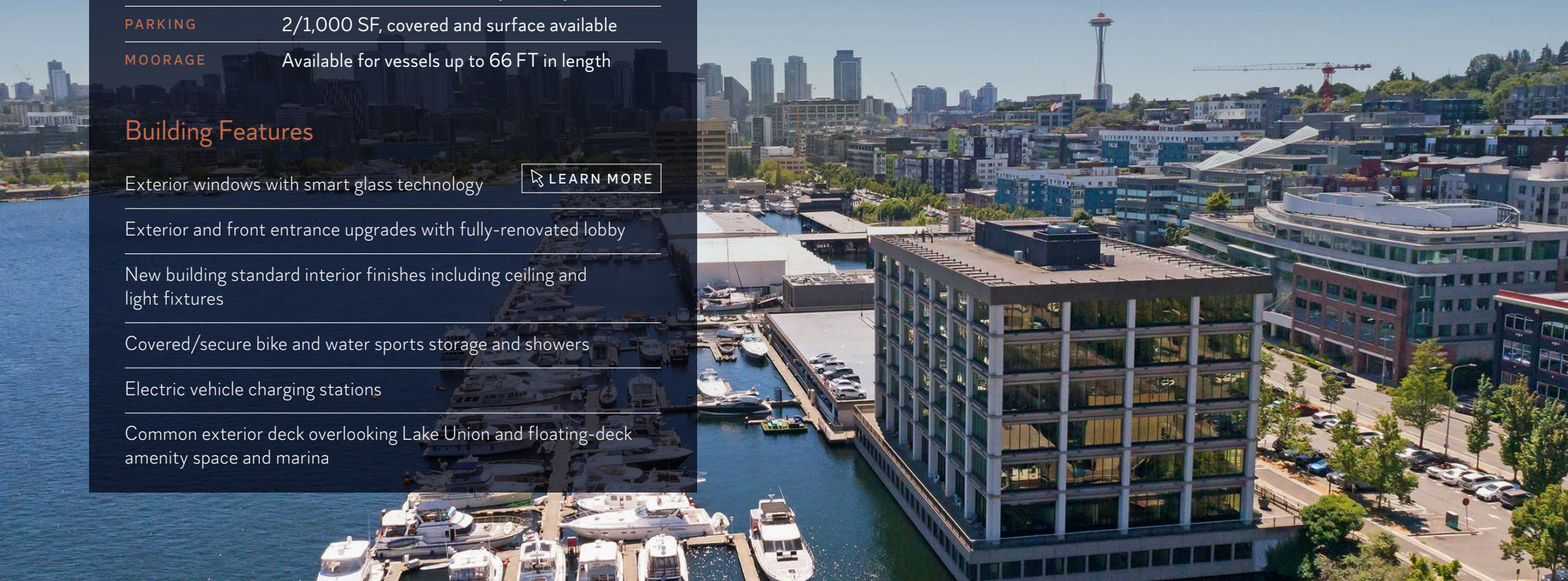
New building standard interior finishes including ceiling and light fixtures

Covered/secure bike and water sports storage and showers

Electric vehicle charging stations

Common exterior deck overlooking Lake Union and floating-deck amenity space and marina

The Lake Union Building is as close to water as an office can get. The LEED Gold building is located on the shores of Lake Union and directly on the Cheshiahud Lake Union Loop bike and walking trail, as well as new bike lanes connecting to Downtown Seattle, Fremont, and beyond.



# THE LAKE UNION BUILDING

## 3RD FLOOR

SUITE

300

SF AVAILABLE

6,629

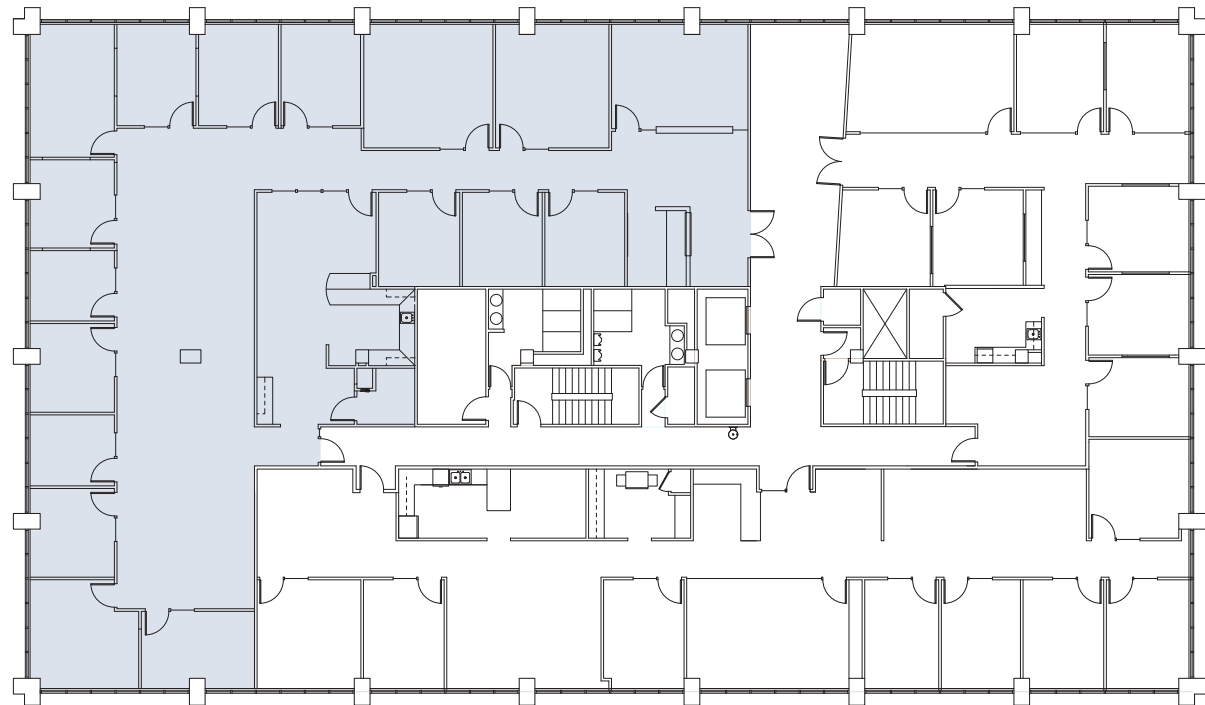
AVAILABLE

NOW

LEASE RATE

CALL

NORTH & EAST-FACING WITH LAKE UNION & GASWORKS VIEWS



OWNED BY



EXCLUSIVELY  
LEASED BY

**Todd Battison**

206.296.9621

todd.battison@kidder.com

**Jeff Huntington**

206.296.9619

jeff.huntington@kidder.com



This information supplied herein is from sources we deem reliable. It is provided without any representation, warranty, or guarantee, expressed or implied as to its accuracy. Prospective Buyer or Tenant should conduct an independent investigation and verification of all matters deemed to be material, including, but not limited to, statements of income and expenses. Consult your attorney, accountant, or other professional advisor.

KIDDER.COM

# THE LAKE UNION BUILDING

## 3RD FLOOR

SUITE

350

SF AVAILABLE

2,932

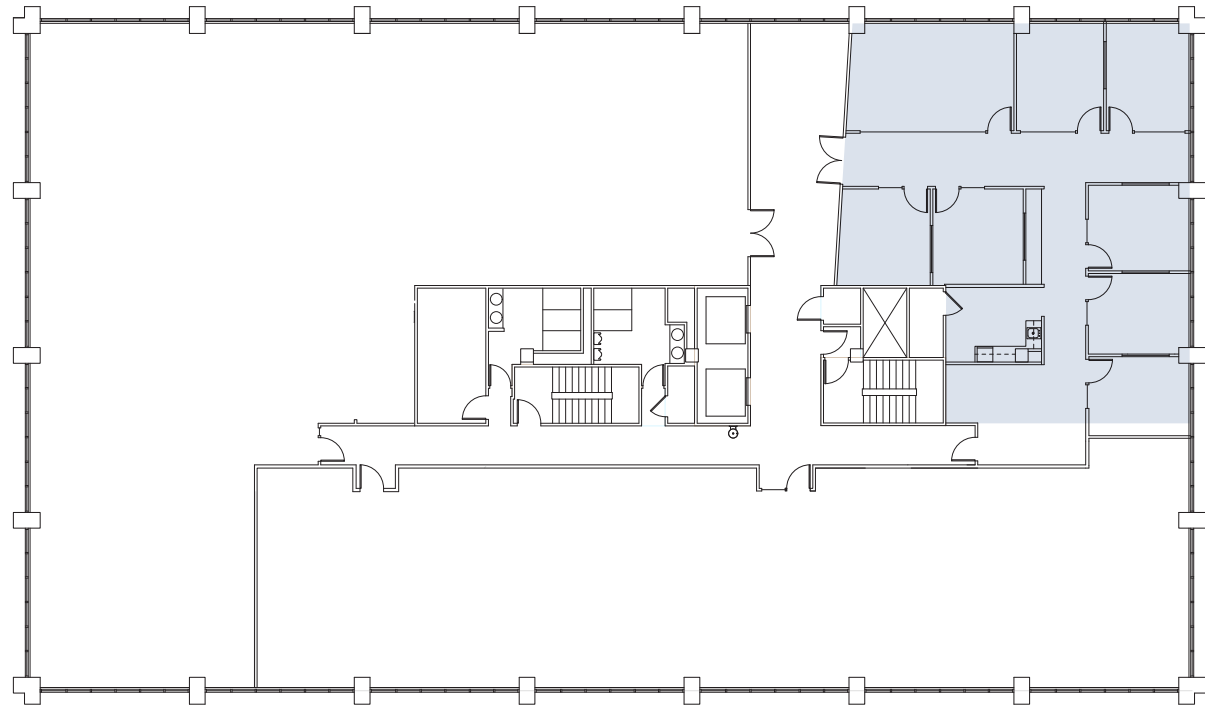
AVAILABLE

6.1.23

LEASE RATE

CALL

SOUTH & EAST-FACING WITH LAKE UNION & DOWNTOWN VIEWS



OWNED BY



EXCLUSIVELY  
LEASED BY

**Todd Battison**

206.296.9621

todd.battison@kidder.com

**Jeff Huntington**

206.296.9619

jeff.huntington@kidder.com



This information supplied herein is from sources we deem reliable. It is provided without any representation, warranty, or guarantee, expressed or implied as to its accuracy. Prospective Buyer or Tenant should conduct an independent investigation and verification of all matters deemed to be material, including, but not limited to, statements of income and expenses. Consult your attorney, accountant, or other professional advisor.

KIDDER.COM

# THE LAKE UNION BUILDING

## 4TH FLOOR

SUITE

400

SF AVAILABLE (SUBLEASE)

5,784

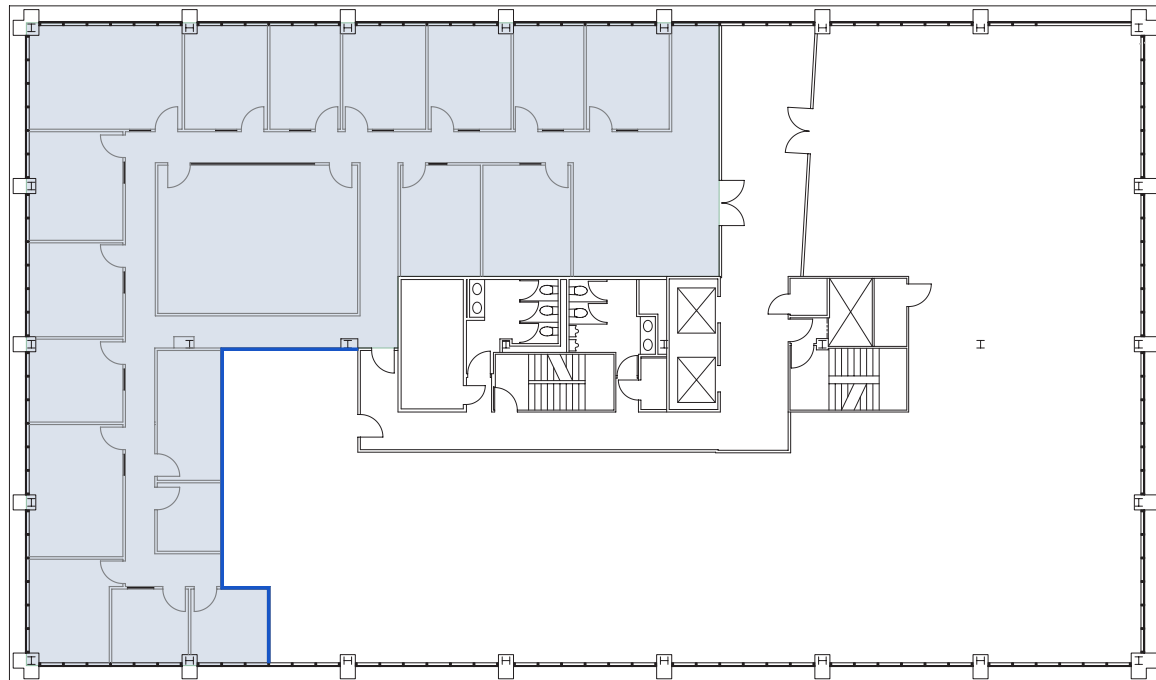
AVAILABLE

Q2 2023

LEASE RATE

\$33 NNN

NORTH & EAST-FACING WITH LAKE UNION & GASWORKS VIEWS



OWNED BY



EXCLUSIVELY  
LEASED BY

**Todd Battison**

206.296.9621

todd.battison@kidder.com

**Jeff Huntington**

206.296.9619

jeff.huntington@kidder.com



This information supplied herein is from sources we deem reliable. It is provided without any representation, warranty, or guarantee, expressed or implied as to its accuracy. Prospective Buyer or Tenant should conduct an independent investigation and verification of all matters deemed to be material, including, but not limited to, statements of income and expenses. Consult your attorney, accountant, or other professional advisor.

KIDDER.COM

# THE LAKE UNION BUILDING

## 5TH FLOOR

SUITE

500

SF AVAILABLE (DIVISIBLE FULL FLOOR\*)

13,855

AVAILABLE

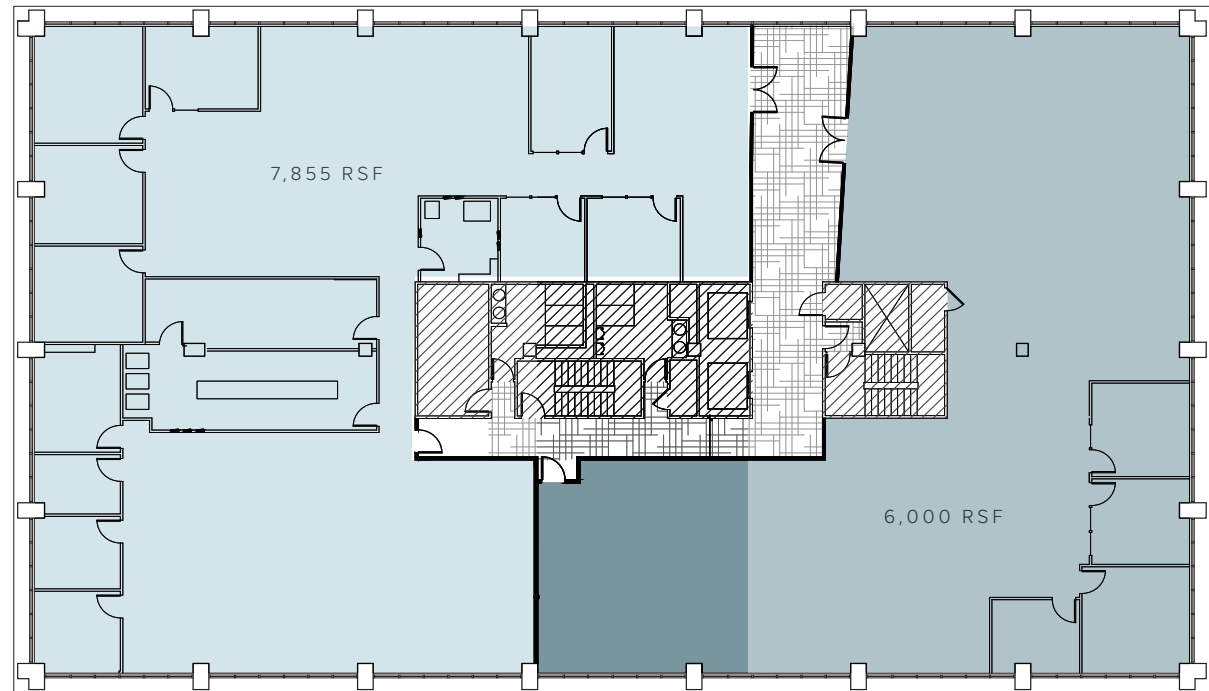
Q2 2023

LEASE RATE

CALL

\*Divisible to approximately 7,855 or 6,000 RSF

NORTH, EAST, & SOUTH-FACING VIEWS OF LAKE UNION, CASCADE MOUNTAINS, AND DOWNTOWN



OWNED BY



EXCLUSIVELY  
LEASED BY

**Todd Battison**  
206.296.9621  
todd.battison@kidder.com

**Jeff Huntington**  
206.296.9619  
jeff.huntington@kidder.com



This information supplied herein is from sources we deem reliable. It is provided without any representation, warranty, or guarantee, expressed or implied as to its accuracy. Prospective Buyer or Tenant should conduct an independent investigation and verification of all matters deemed to be material, including, but not limited to, statements of income and expenses. Consult your attorney, accountant, or other professional advisor.

KIDDER.COM

# THE LAKE UNION BUILDING

## 6TH FLOOR

NORTH, EAST, & SOUTH VIEWS OF LAKE UNION, CASCADE MOUNTAINS, AND DOWNTOWN

SUITE

600

SF AVAILABLE

9,989

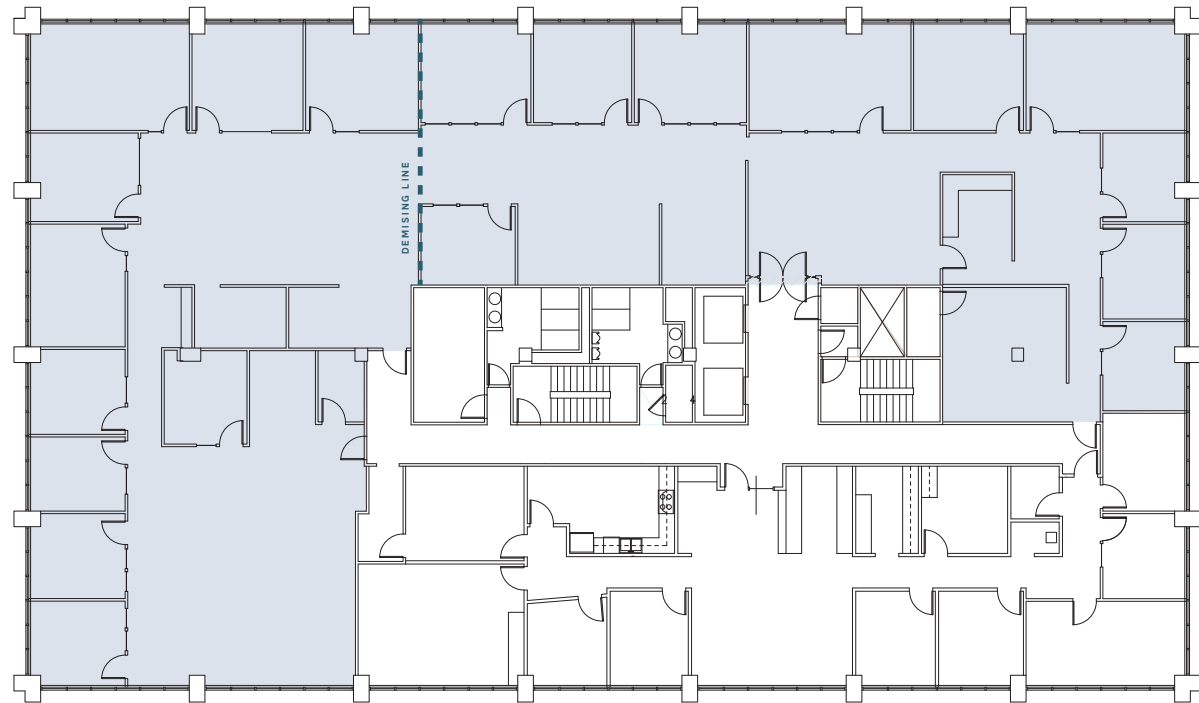
AVAILABLE

3.1.23

LEASE RATE

CALL

\*Divisible to approximately 4,300 RSF



OWNED BY



EXCLUSIVELY  
LEASED BY

**Todd Battison**  
206.296.9621  
todd.battison@kidder.com

**Jeff Huntington**  
206.296.9619  
jeff.huntington@kidder.com



This information supplied herein is from sources we deem reliable. It is provided without any representation, warranty, or guarantee, expressed or implied as to its accuracy. Prospective Buyer or Tenant should conduct an independent investigation and verification of all matters deemed to be material, including, but not limited to, statements of income and expenses. Consult your attorney, accountant, or other professional advisor.

KIDDER.COM