



FOR LEASE

FOREMOST PROPERTY

2413 PACIFIC AVENUE
TACOMA, WA



FOR LEASE

Foremost Property

2413 PACIFIC AVE | TACOMA, WA



Beautifully renovated building

HIGHLY visible corner location near LeMay Car Museum, Tacoma Dome and UWT

ON Light Rail route

RETAIL or office use

HIGH growth area

±5,042 SF BTS Space

CONVENIENT access to I-5 & Hwy 509

CALL broker for rates

LAURA FOX, CCIM
253.722.1441
laura.fox@kidder.com

KIDDER.COM

This information supplied herein is from sources we deem reliable. It is provided without any representation, warranty, or guarantee, expressed or implied as to its accuracy. Prospective Buyer or Tenant should conduct an independent investigation and verification of all matters deemed to be material, including, but not limited to, statements of income and expenses. Consult your attorney, accountant, or other professional advisor.

km Kidder Mathews

FOR LEASE

Foremost Property

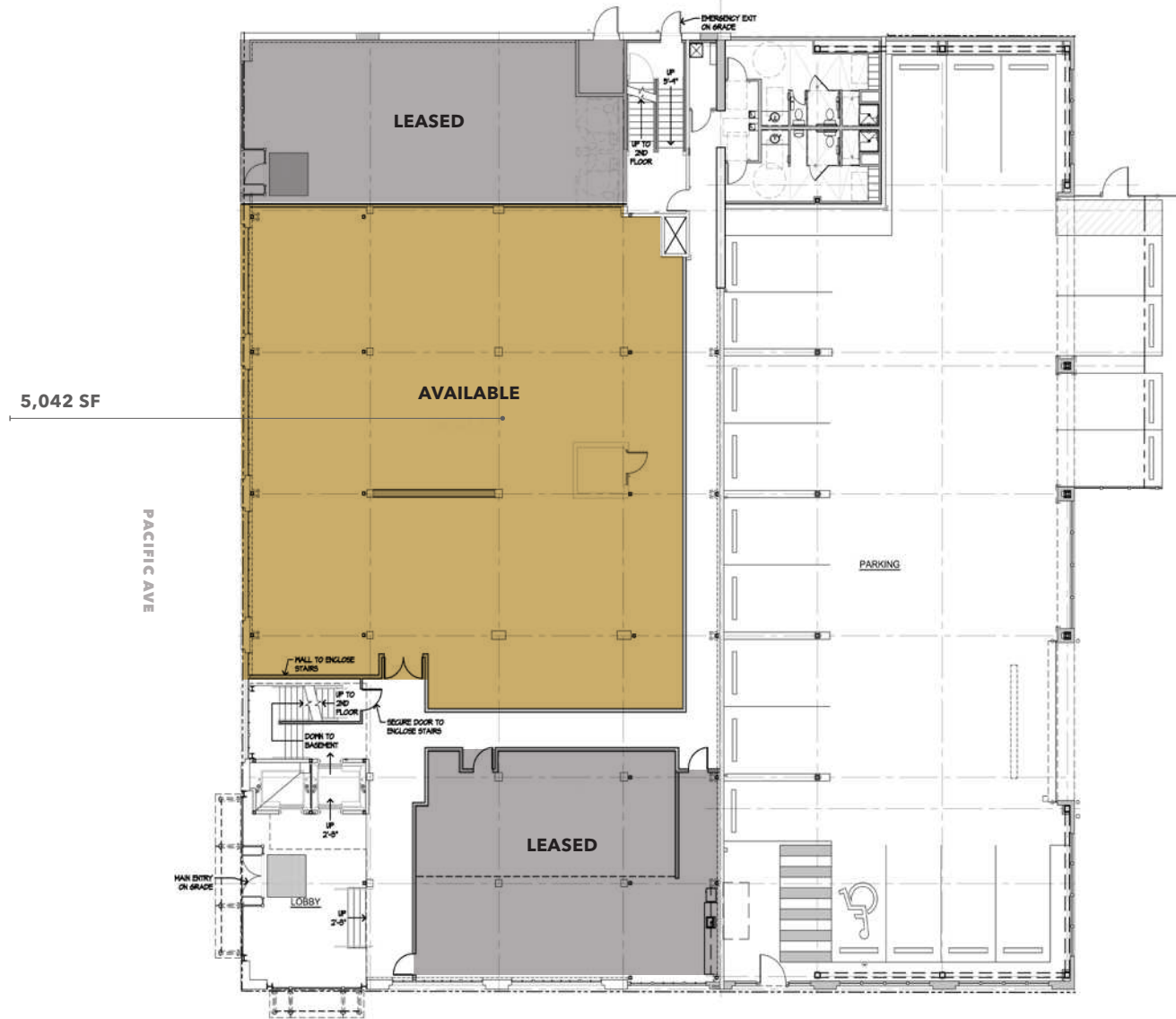
2413 PACIFIC AVE | TACOMA, WA

5,042

SQUARE FEET

CAN BE
DEMISED

LAURA FOX, CCIM
253.722.1441
laura.fox@kidder.com



KIDDER.COM

This information supplied herein is from sources we deem reliable. It is provided without any representation, warranty, or guarantee, expressed or implied as to its accuracy. Prospective Buyer or Tenant should conduct an independent investigation and verification of all matters deemed to be material, including, but not limited to, statements of income and expenses. Consult your attorney, accountant, or other professional advisor.

km Kidder
Mathews