

For Lease

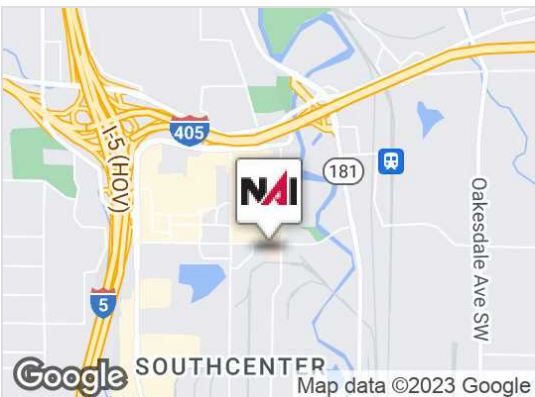
# Medical Office Building in Southcenter



## Southcenter Professional Plaza

411 Strander Blvd, Tukwila, WA

- Suite 203 – 1,422 RSF – former dental office
- Central location in Southcenter with great exposure
- Join a high-quality tenant roster of established medical practices
- Excellent access to public transportation
- Plentiful parking, ratio of over 4/1000 RSF
- **Lease Rate:** \$22.00/RSF, NNN



For more information:

**Mike George**

+1 425 586 5618 • [mgeorge@nai-psp.com](mailto:mgeorge@nai-psp.com)

**Tony Rona**

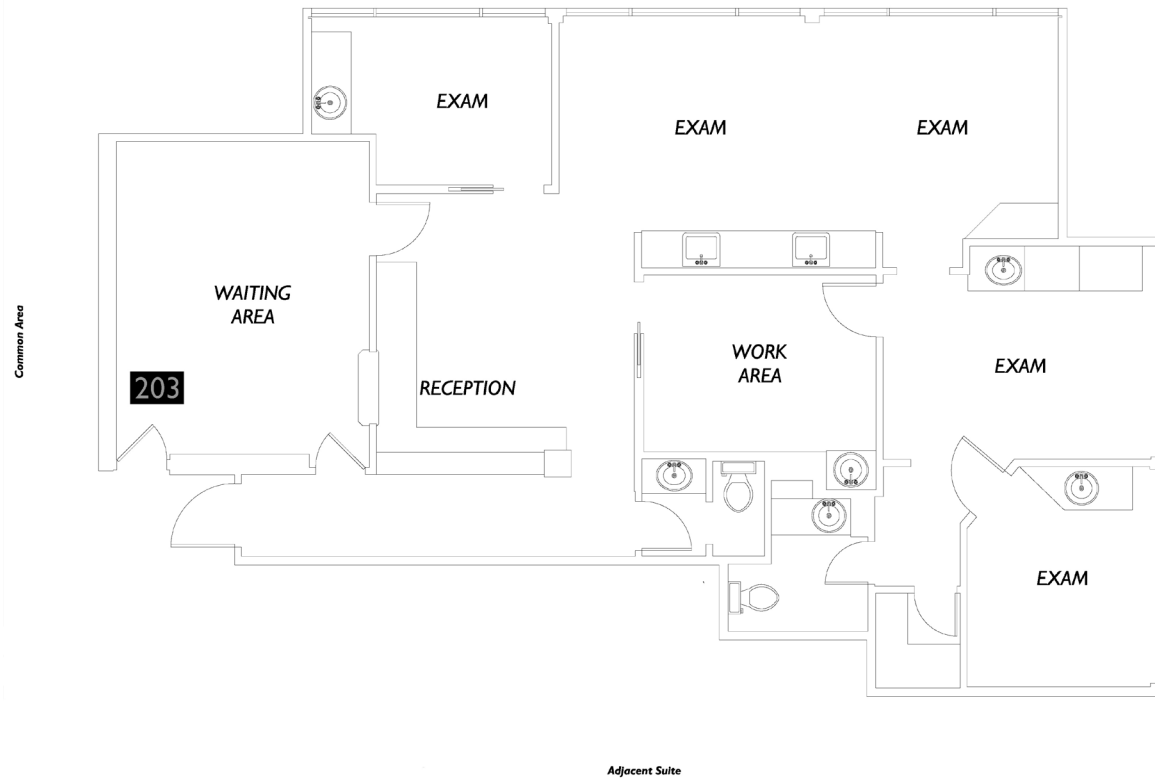
+1 425 586 5634 • [trona@nai-psp.com](mailto:trona@nai-psp.com)



BELLEVUE | SEATTLE | TACOMA

10900 NE 8th Street, Suite 1500  
Bellevue, WA 98004  
+1 425 586 5600  
[nai-psp.com](http://nai-psp.com)

THE INFORMATION CONTAINED HEREIN HAS BEEN GIVEN TO US BY THE OWNER OF THE PROPERTY OR OTHER SOURCES WE DEEM RELIABLE, WE HAVE NO REASON TO DOUBT ITS ACCURACY, BUT WE DO NOT GUARANTEE IT. ALL INFORMATION SHOULD BE VERIFIED PRIOR TO PURCHASE OR LEASE.



## Suite 203 – 1,422 RSF

### Dental Office

- Waiting room
- Reception area
- 2 offices on window line with sinks
- 2 “open concept” hygiene stations
- Restorative area with sink and dental chair
- Interior operatory/exam room
- 2 restrooms
- Separate entrance and exit



BELLEVUE | TACOMA

10900 NE 8th Street, Suite 1500  
Bellevue, WA 98004  
+1 425 586 5600  
[nai-psp.com](http://nai-psp.com)