

# SEATTLE TOWER

Office Space For Lease

1218 Third Avenue, Seattle, WA 98101



Tenant Lounge - Common Area



Tenant Lounge - Conference Room

## Character Without Compromise

Seattle Tower is a unique, historic Class A high-rise office building located in the center of Seattle's central business district. The building's Art Deco design, choice location, sweeping views of the Puget Sound, and other desirable amenities attract an energetic mix of office tenants.



Stunning Lobby



Fitness Center



12th Floor Spec Suite

### Historic Character and Quality Features

Seattle Tower is one of Seattle’s most architecturally significant historic buildings. It boasts a stunning lobby with vaulted ceilings, marble floors and ornate bronze details throughout.

### Transit Access

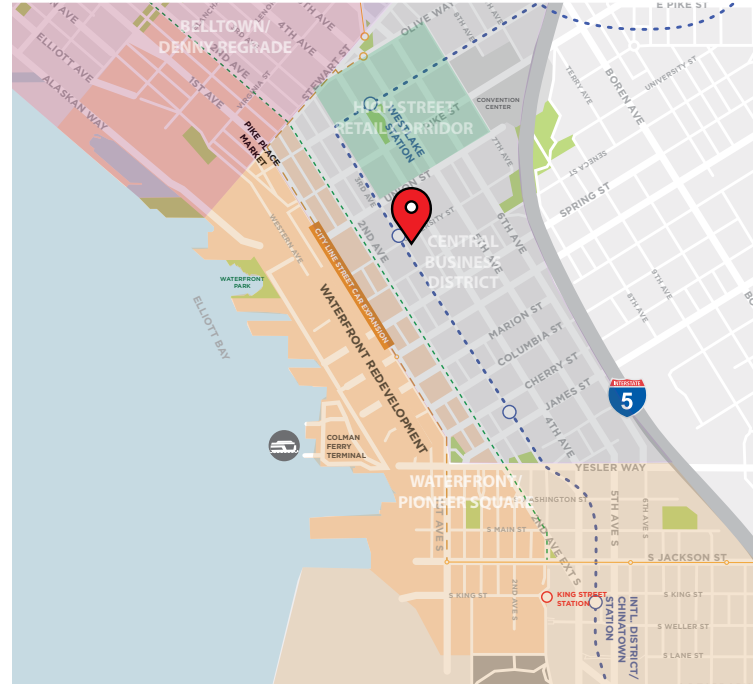
Located across from the University Street Station serving light rail and Metro buses. Only blocks away from the Ferry Terminal and the dynamic redeveloping waterfront.

### “Walker’s Paradise”

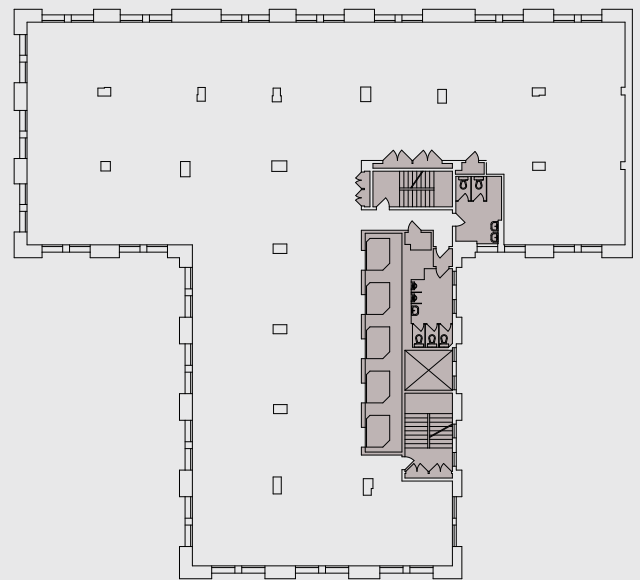
99 walk score — close to dozens of quality restaurants, including The Capital Grille, Shuckers, Purple Cafe & Wine Bar, and Pike Place Market, with Pegasus Coffee in the Building.

### New Amenities

New common area improvements include multiple meeting spaces, tenant lounge, bike room, updated lighting and modern glass entryways, and a fully-equipped fitness center with lockers and showers.



Typical Floor Plan



### CONTACT

Cleita Harvey  
+1 206 607 1794  
cleita.harvey@am.jll.com

Tim Jones  
+1 206 971 7011  
tim.jones@am.jll.com

