

4545 Roosevelt

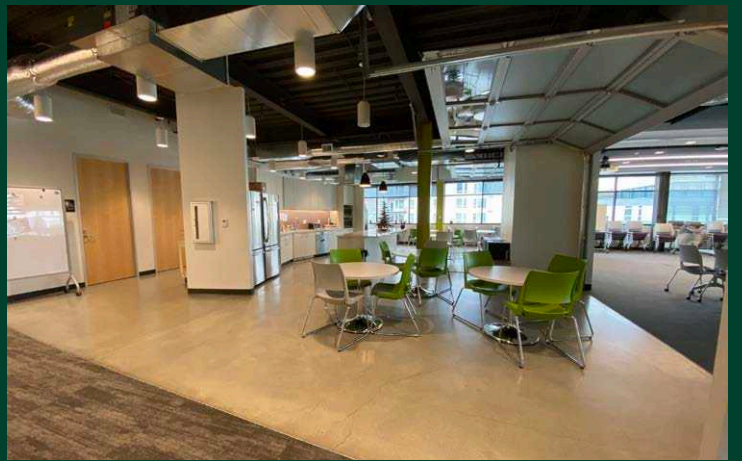
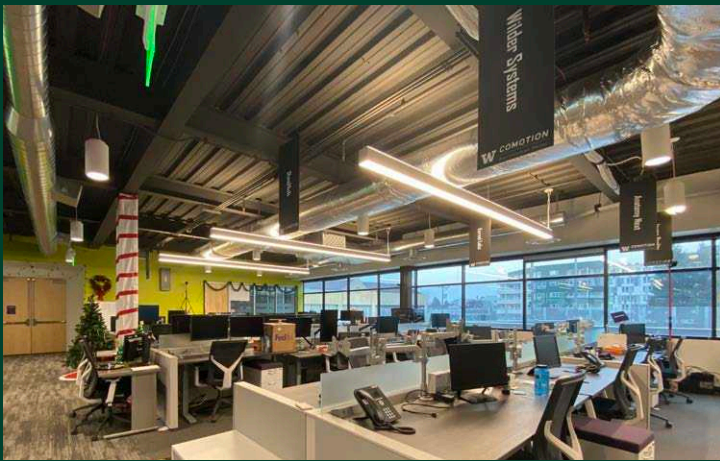
4545 Roosevelt Way NE, Seattle WA 98105

New Space - Full 4th Floor Available



4545 Roosevelt

4545 Roosevelt Way NE | Seattle, WA 98105



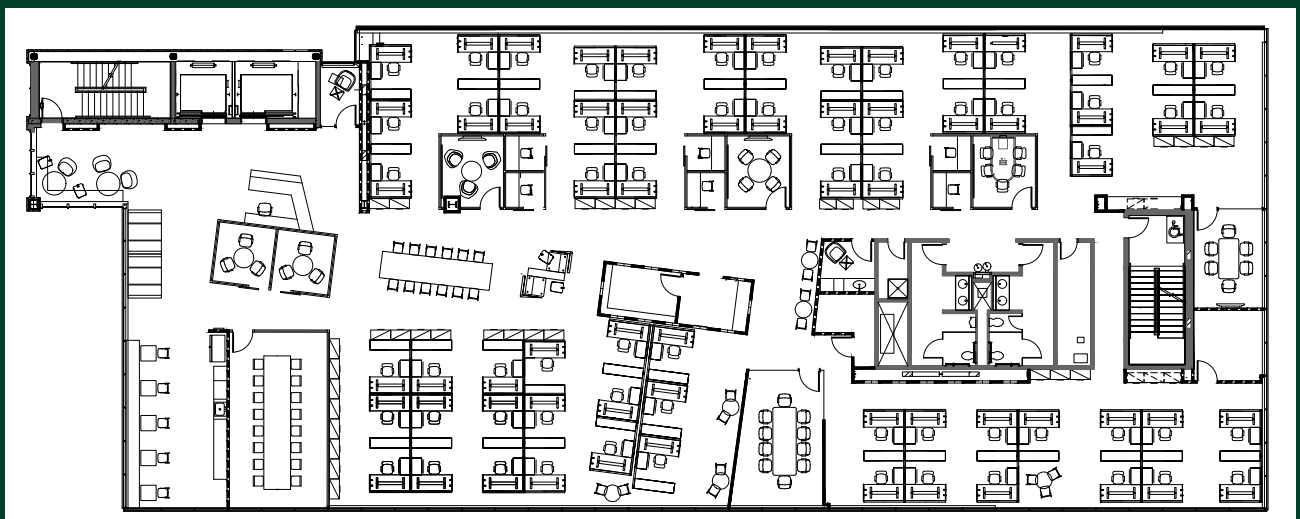


Property Highlights

- + CREATIVE SPACE AVAILABLE Q4 2022
- + Available Space:
±13,740 sq. ft. on the 4th floor.
- + Sublease rate:
\$37.00/SF, NNN
- + Sublease Term:
±3.5 years in length
- + Condition of Space:
Beautifully improved space with open plenum, roll-up doors and custom lighting.
- + Transit:
Located one-half block from 45th Street and Metro service. Future light rail only 4 blocks away.
- + Parking: 1/1,000 parking ratio with additional parking in nearby lots within easy walking distance
- + Amenities:
Adjacent to Trader Joe's, and walking distance to numerous retail amenities, hotels and coffee shops Seattle and Lake Union views.

Floor Plan

±13,740 Sq. Ft.

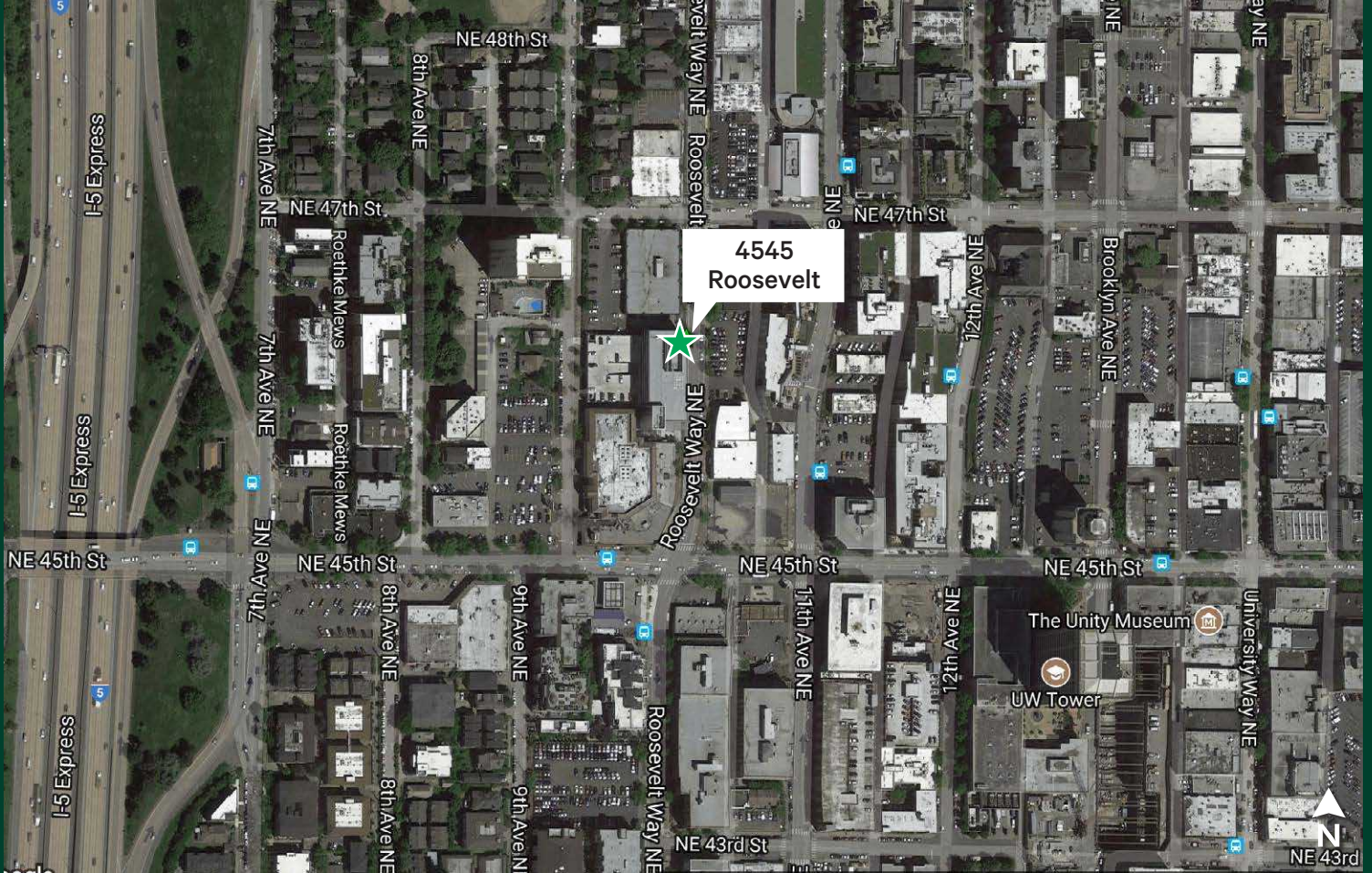


4545 Roosevelt

4545 Roosevelt Way NE | Seattle, WA 98105

For Sublease

Location Map



Contact Us

Jeff Jochums

Executive Vice President
+1 425 462 6971
jeff.jochums@cbre.com

Noah Roehl

Sr. Transaction Manager
+1 360 720 5662
noah.roel@cbre.com

CBRE, Inc.

929 108th Avenue NE
Suite 700
Bellevue, WA 98004

© 2021 CBRE, Inc. All rights reserved. This information has been obtained from sources believed reliable, but has not been verified for accuracy or completeness. You should conduct a careful, independent investigation of the property and verify all information. Any reliance on this information is solely at your own risk. CBRE and the CBRE logo are service marks of CBRE, Inc. All other marks displayed on this document are the property of their respective owners, and the use of such logos does not imply any affiliation with or endorsement of CBRE. Photos herein are the property of their respective owners. Use of these images without the express written consent of the owner is prohibited. ar4.28.22

www.cbre.com/

CBRE