



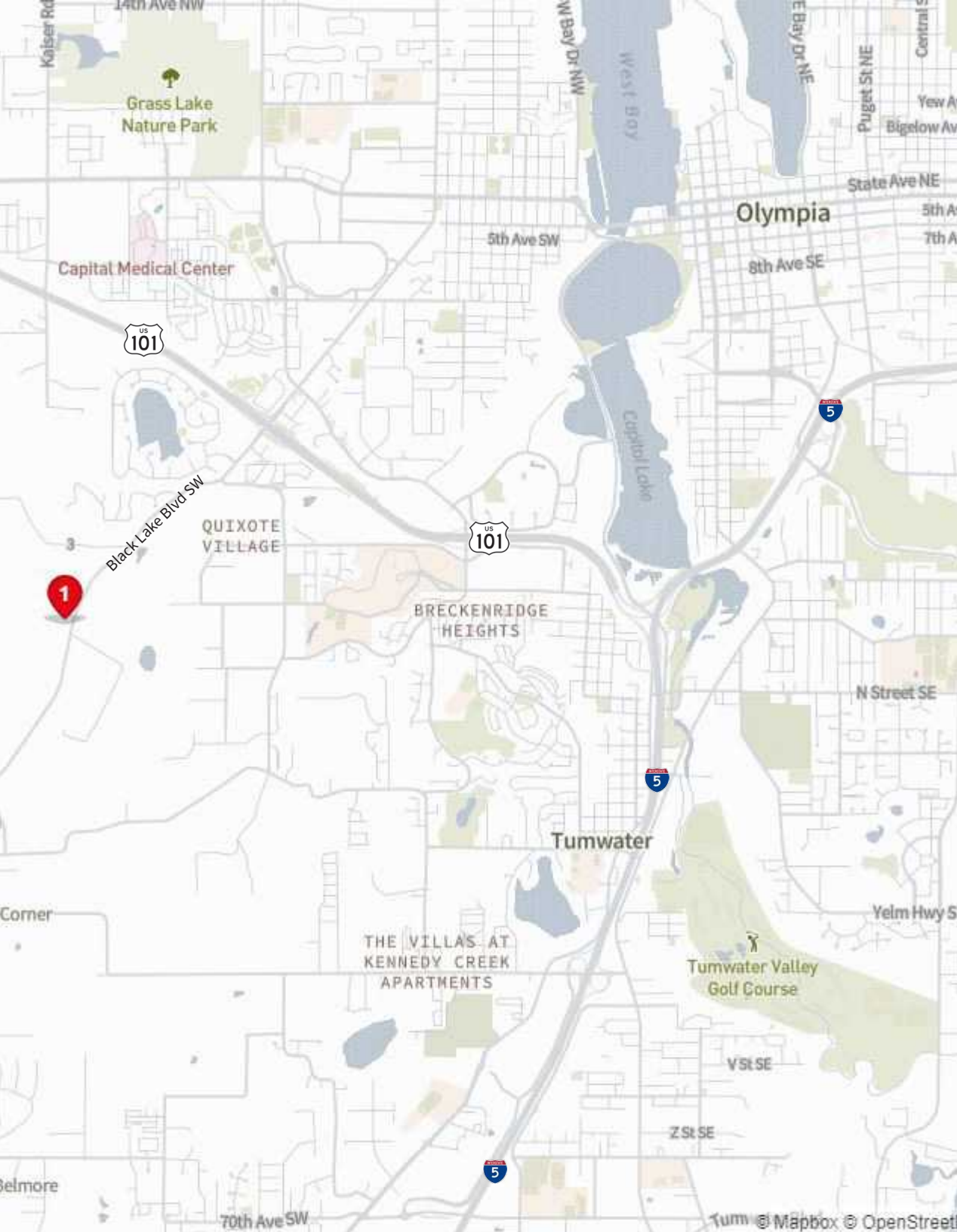
3 Acres
Land for sublease



Land/Yard For Sublease

2860 Black Lake Blvd SW | Tumwater, WA

Connor Raffety
Associate
206 437 1006
connor.raffety@jll.com



3 Acre Yard For Sublease

- Term through 9/2025
- Great laydown yard opportunity
- Good access to Hwy 101 and I-5
- Zoning: Heavy Industrial (City of Tumwater)
- Cleared and graded
- Fully secured site
- Only heavy industrial zoned property in Thurston County

For more information
please contact:

Connor Raffety
Associate
206 437 1006
connor.raffety@jll.com

DISCLAIMER © 2023 Jones Lang LaSalle IP, Inc. All rights reserved. All information contained herein is from sources deemed reliable; however, no representation or warranty is made to the accuracy thereof.

