

FOR LEASE

Allenmore Medical Plaza I and II



Owned by



CLISE
PROPERTIES

Leasing By

km **Kidder Mathews**

FOR LEASE

Allenmore Medical Plaza I and II

2202 S CEDAR ST & 3209 S 23RD ST | TACOMA, WA



Class-A Medical Office Space For Lease

SUITE 225 | 3,895 RSF Available

SUITE 340 | 1,901 RSF Available

\$32.00 PSF, per year, NNN

SURFACE PARKING at 5/1,000 SF

STATE OF THE ART medical office building secured with technologically advanced access card system that tracks times and point of entry. Telecommunication and connecting capabilities

ADJACENT to Multicare Allenmore Hospital with quick access to I-5 and Hwy 16

MULTICARE ALLENMORE HOSPITAL, established in 1929 offers Pierce County Residents convenient access to hundreds of care providers, the latest diagnostic and treatment technologies plus a 24-hour emergency department

WILL FRAME
253.722.1412
will.frame@kidder.com

DREW FRAME
253.722.1433
drew@kidder.com

KIDDER.COM

This information supplied herein is from sources we deem reliable. It is provided without any representation, warranty, or guarantee, expressed or implied as to its accuracy. Prospective Buyer or Tenant should conduct an independent investigation and verification of all matters deemed to be material, including, but not limited to, statements of income and expenses. Consult your attorney, accountant, or other professional advisor.

Owned
by

**CLISE**
PROPERTIES

Leasing
by

 **Kidder
Mathews**

FOR LEASE

Allenmore Medical Plaza I and II

2202 S CEDAR ST & 3209 S 23RD ST | TACOMA, WA



KIDDER.COM

This information supplied herein is from sources we deem reliable. It is provided without any representation, warranty, or guarantee, expressed or implied as to its accuracy. Prospective Buyer or Tenant should conduct an independent investigation and verification of all matters deemed to be material, including, but not limited to, statements of income and expenses. Consult your attorney, accountant, or other professional advisor.

Owned
by



Leasing
by

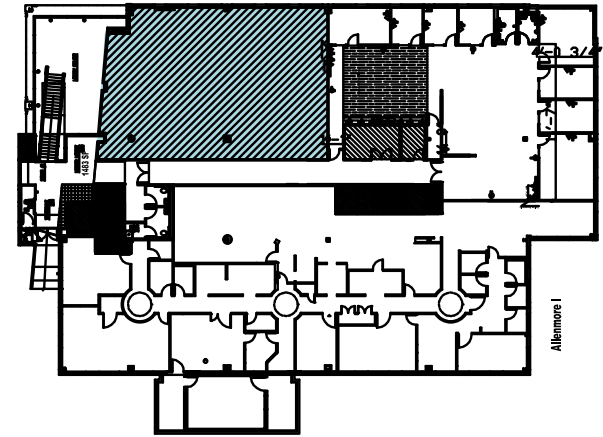
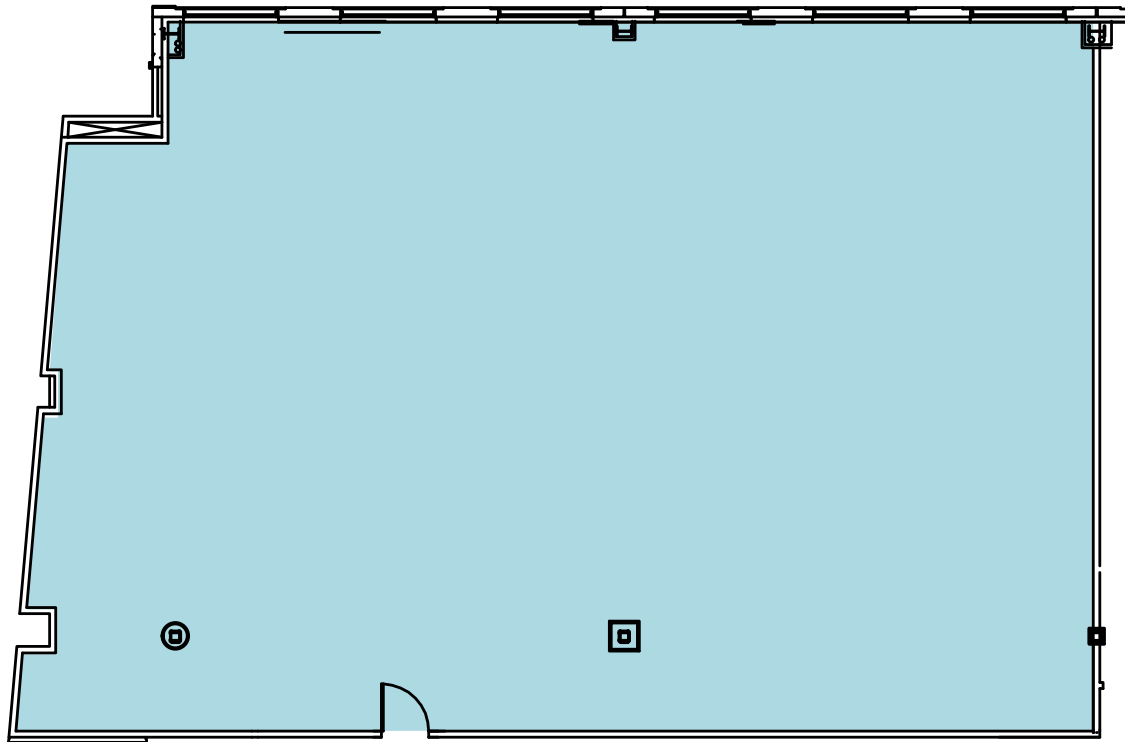


FOR LEASE

Allenmore Medical Plaza I and II

2202 S CEDAR ST & 3209 S 23RD ST | TACOMA, WA

Plaza I, Suite 225 | 3,895 RSF



KIDDER.COM

This information supplied herein is from sources we deem reliable. It is provided without any representation, warranty, or guarantee, expressed or implied as to its accuracy. Prospective Buyer or Tenant should conduct an independent investigation and verification of all matters deemed to be material, including, but not limited to, statements of income and expenses. Consult your attorney, accountant, or other professional advisor.

Owned
by



Leasing
by

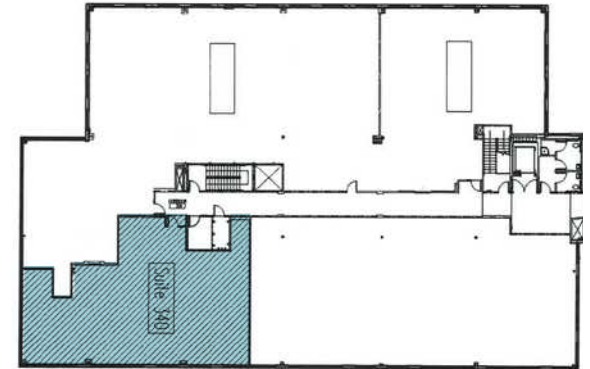
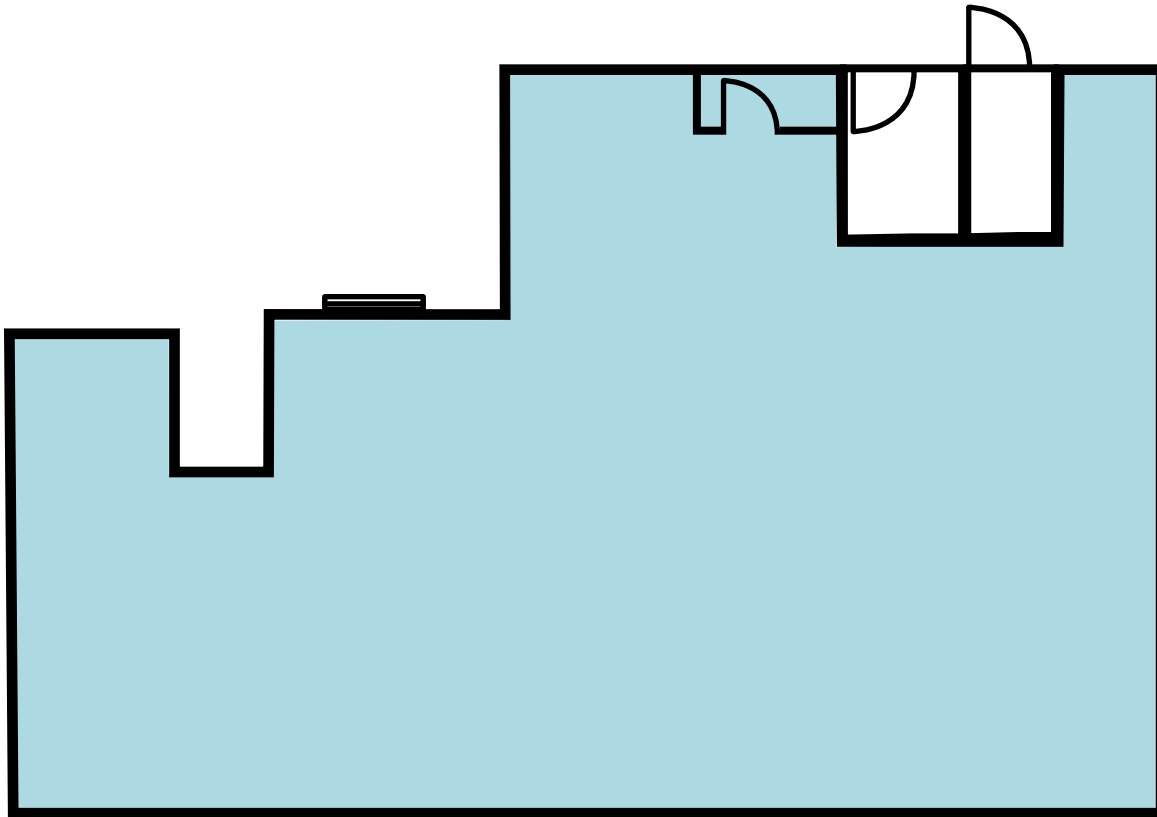


FOR LEASE

Allenmore Medical Plaza I and II

2202 S CEDAR ST & 3209 S 23RD ST | TACOMA, WA

Plaza II, Suite 340 | 1,901 RSF



KIDDER.COM

This information supplied herein is from sources we deem reliable. It is provided without any representation, warranty, or guarantee, expressed or implied as to its accuracy. Prospective Buyer or Tenant should conduct an independent investigation and verification of all matters deemed to be material, including, but not limited to, statements of income and expenses. Consult your attorney, accountant, or other professional advisor.

Owned
by



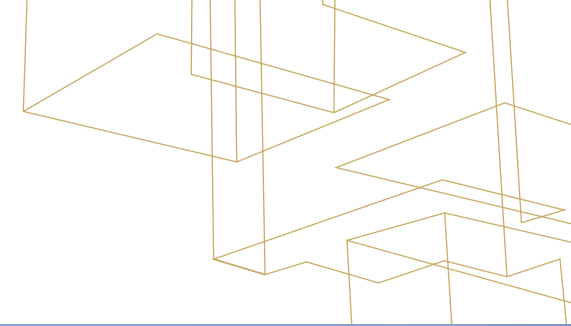
Leasing
by



FOR LEASE

Allenmore Medical Plaza I and II

2202 S CEDAR ST & 3209 S 23RD ST | TACOMA, WA



KIDDER.COM

This information supplied herein is from sources we deem reliable. It is provided without any representation, warranty, or guarantee, expressed or implied as to its accuracy. Prospective Buyer or Tenant should conduct an independent investigation and verification of all matters deemed to be material, including, but not limited to, statements of income and expenses. Consult your attorney, accountant, or other professional advisor.

Owned
by



Leasing
by

