

# For Lease

**Don Zebe**

208 403 1973  
don.zebe@colliers.com

**Jared Zebe**

208 709 7311  
jared.zebe@colliers.com

**Mike Zebe**

208 705 6453  
mike.zebe@colliers.com

---

2043 E Center Street  
Pocatello, Idaho 83201  
208 951 2100  
colliers.com/idaho

## 4100 Yellowstone Ave Pocatello, ID

### Highlights:

- Full movement access
- 1/4 mile from I-86
- Located in the heart of the retail district (28,711 ADT)
- Co-Tenants include: TJ Maxx, IHOP, Shoe Carnival, Harbor Freight, Great Clips, ULTA
- Shadow Anchored by Walmart, Hobby Lobby, and Planet Fitness

This document has been prepared by Colliers for advertising and general information only. Colliers makes no guarantees, representations or warranties of any kind, expressed or implied, regarding the information including, but not limited to, warranties of content, accuracy and reliability. Any interested party should undertake their own inquiries as to the accuracy of the information. Colliers excludes unequivocally all inferred or implied terms, conditions and warranties arising out of this document and excludes all liability for loss and damages arising there from. This publication is the copyrighted property of Colliers and /or its licensor(s). © 2023. All rights reserved. This communication is not intended to cause or induce breach of an existing listing agreement. Colliers Portneuf Valley, LLC.

# For Lease

## Property Information

<b>Property Type</b>	Retail
<b>Parking</b>	Ample
<b>Lease Type</b>	NNN
<b>Access</b>	Contact Agent

## Demos

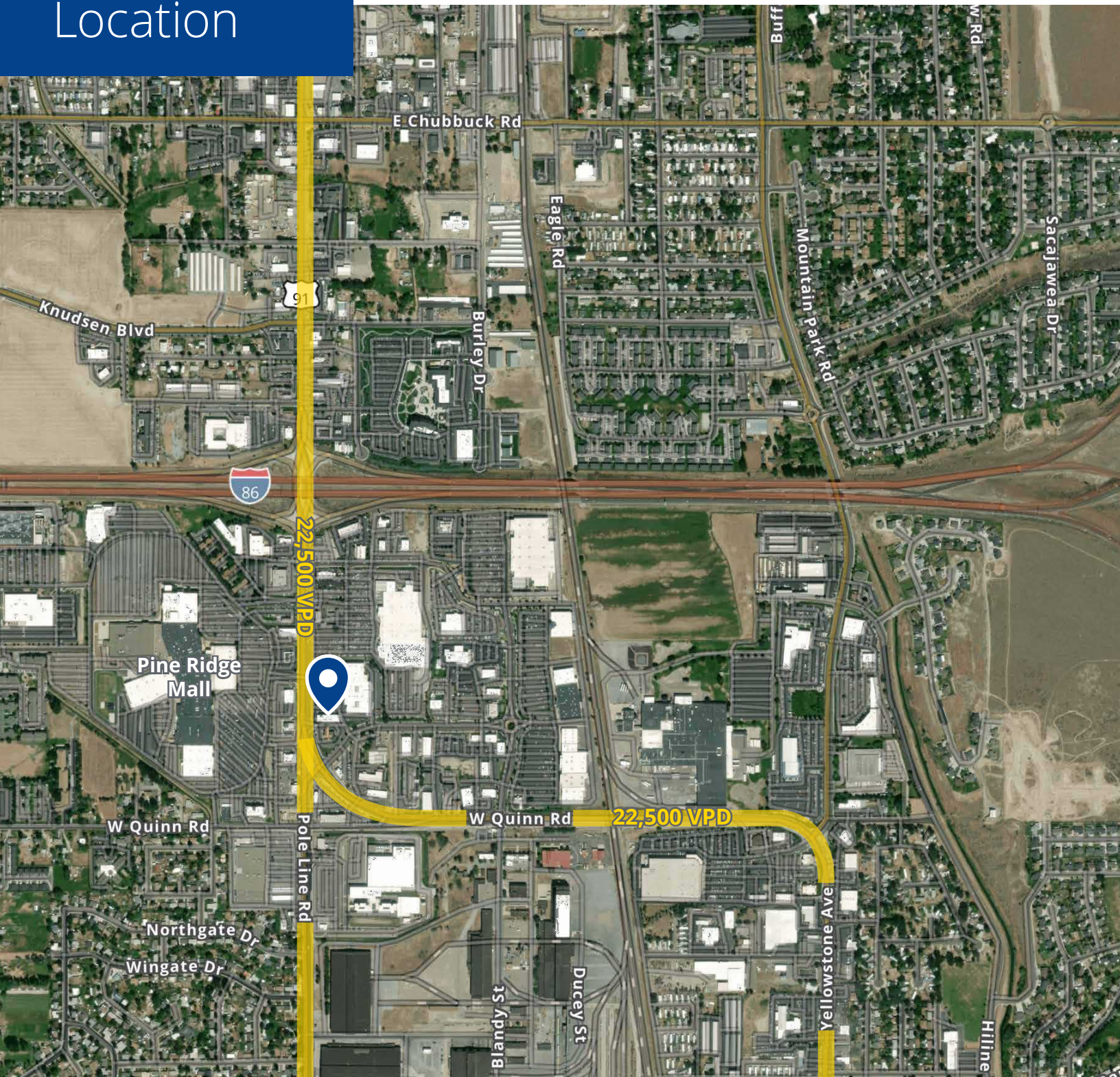
	1 Miles	3 Miles	5 Miles
Population '22	8,409	52,874	71,841
Population '27	8,860	54,923	74,101
Households '22	3,327	19,740	26,843
Households '27	3,509	20,515	27,722
Avg. Income	\$64,681	\$72,980	\$72,443
Median Home Value	\$156,524	\$202,900	\$212,073

## Space Available

Suite	Size	Rate
B	1,000 SF	Contact Agent



# Location



2043 E Center Street  
Pocatello, Idaho 83201  
208 951 2100  
colliers.com/idaho