

# Auburn Regional Medical Plaza

121 N Division St, Auburn, WA 98001

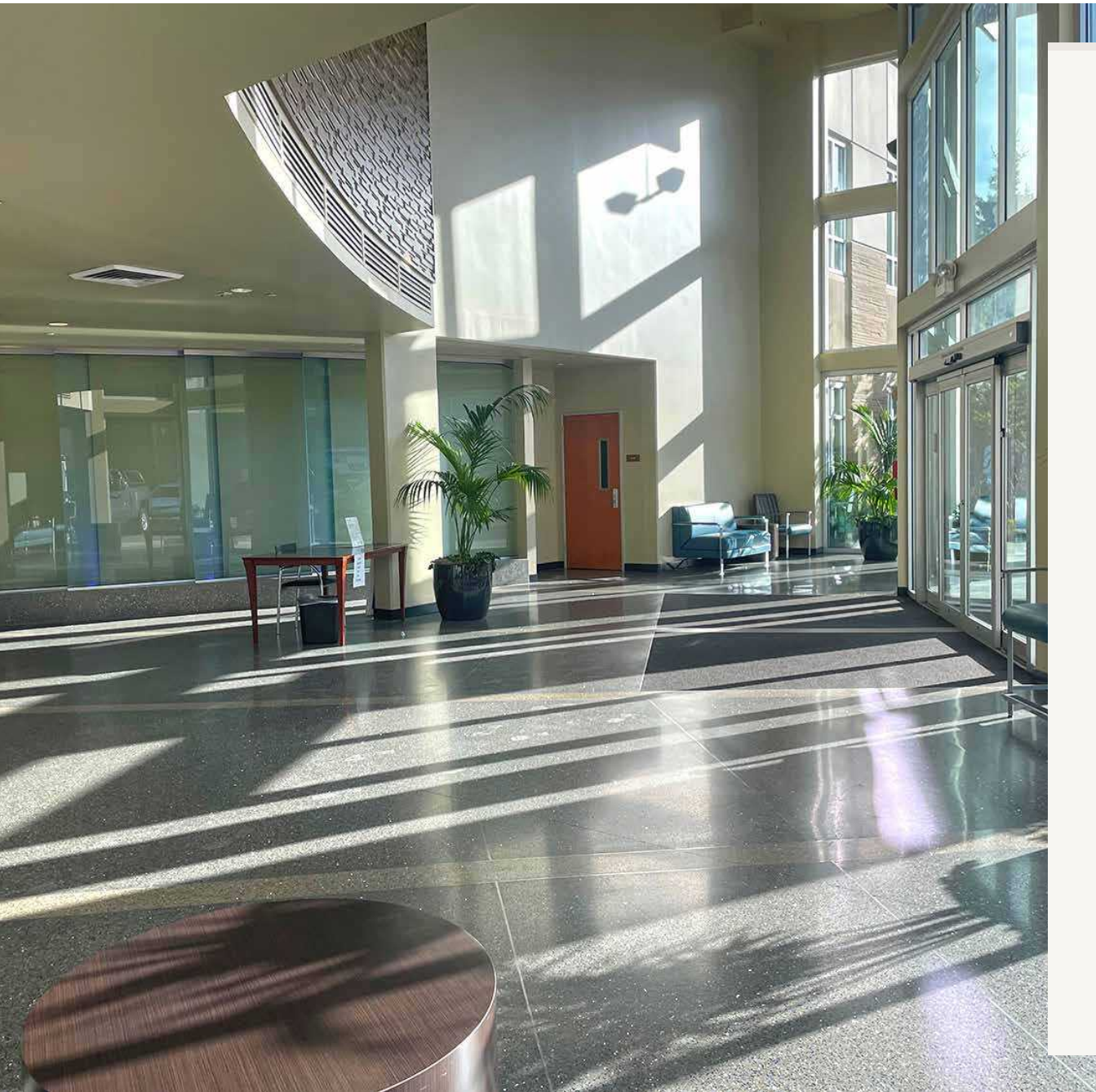


OWNED & MANAGED BY

**ANCHOR**  
HEALTH PROPERTIES

EXCLUSIVELY LEASED BY

**km** Kidder  
Mathews



### SUITE INFORMATION

Suite 203: 2,748 RSF

Suite 320: 1,367 RSF

### LOCATED

Next to Multi-Care Auburn Medical Center.  
Quick access to Highway 167, Highway 18 &  
Souder Station

### REPUTABLE TENANTS

Multi-Care's: general surgery, orthopedic  
center, hematology/oncology, infusion  
services, radiation, sleep center, plastic  
reconstruction surgery, sports medicine

### PACKAGES AVAILABLE

Tenant improvement packages available

# Suite 203 | Test Fit - A



2,748  
SQUARE FEET

Inquire  
FOR LEASE RATE

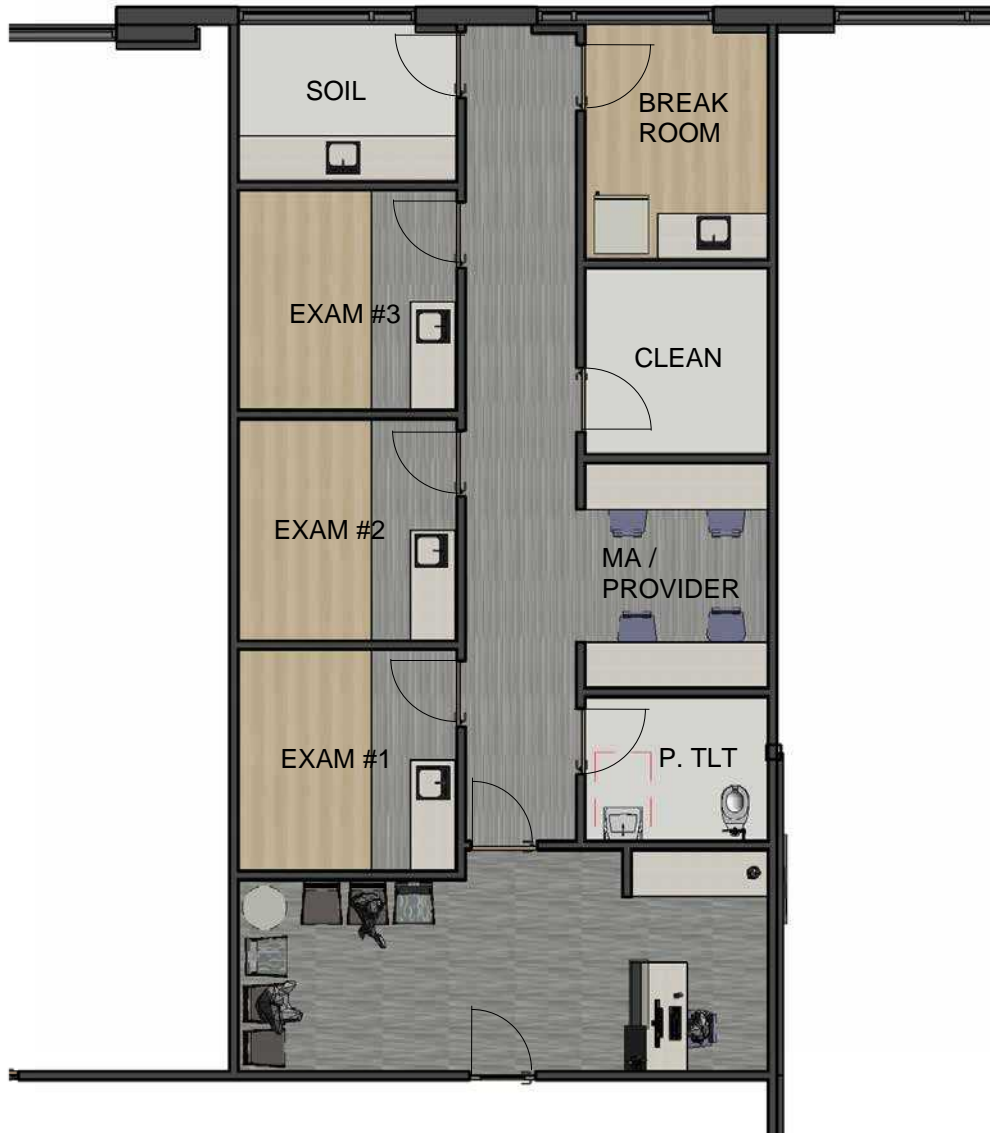
# Suite 203 | Test Fit - B



2,748  
SQUARE FEET

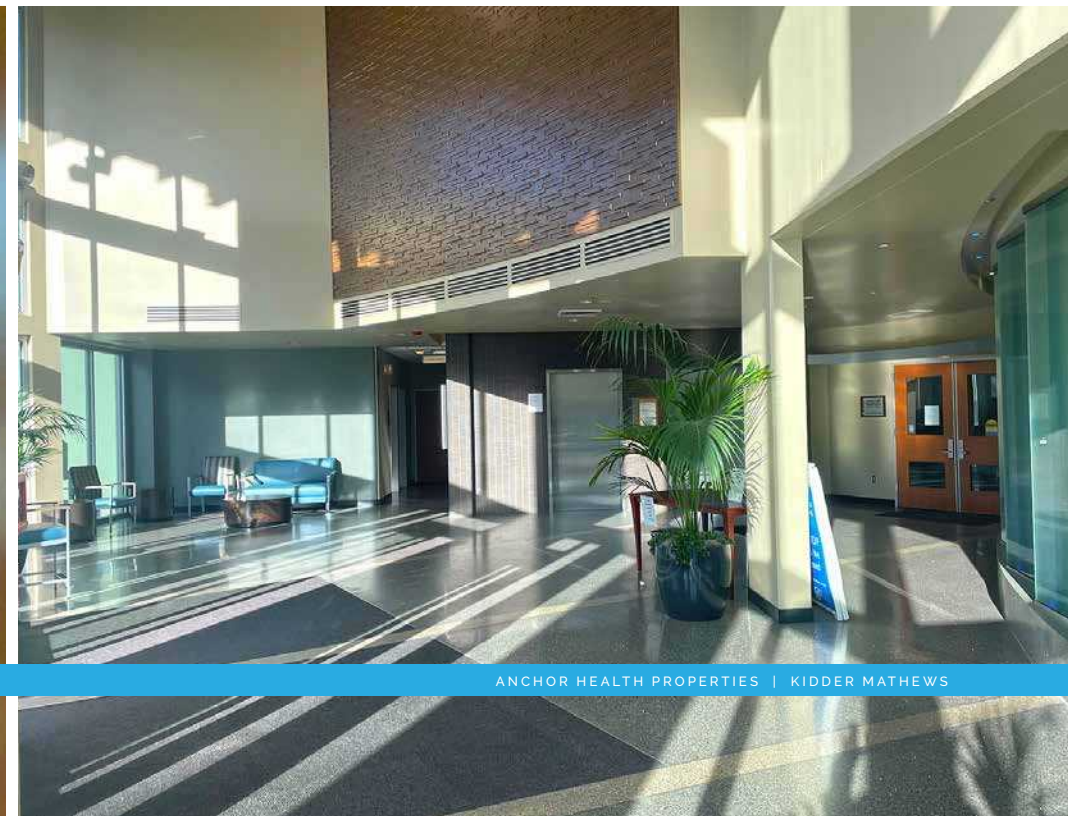
Inquire  
FOR LEASE RATE

# Suite 320 | Test Fit - A

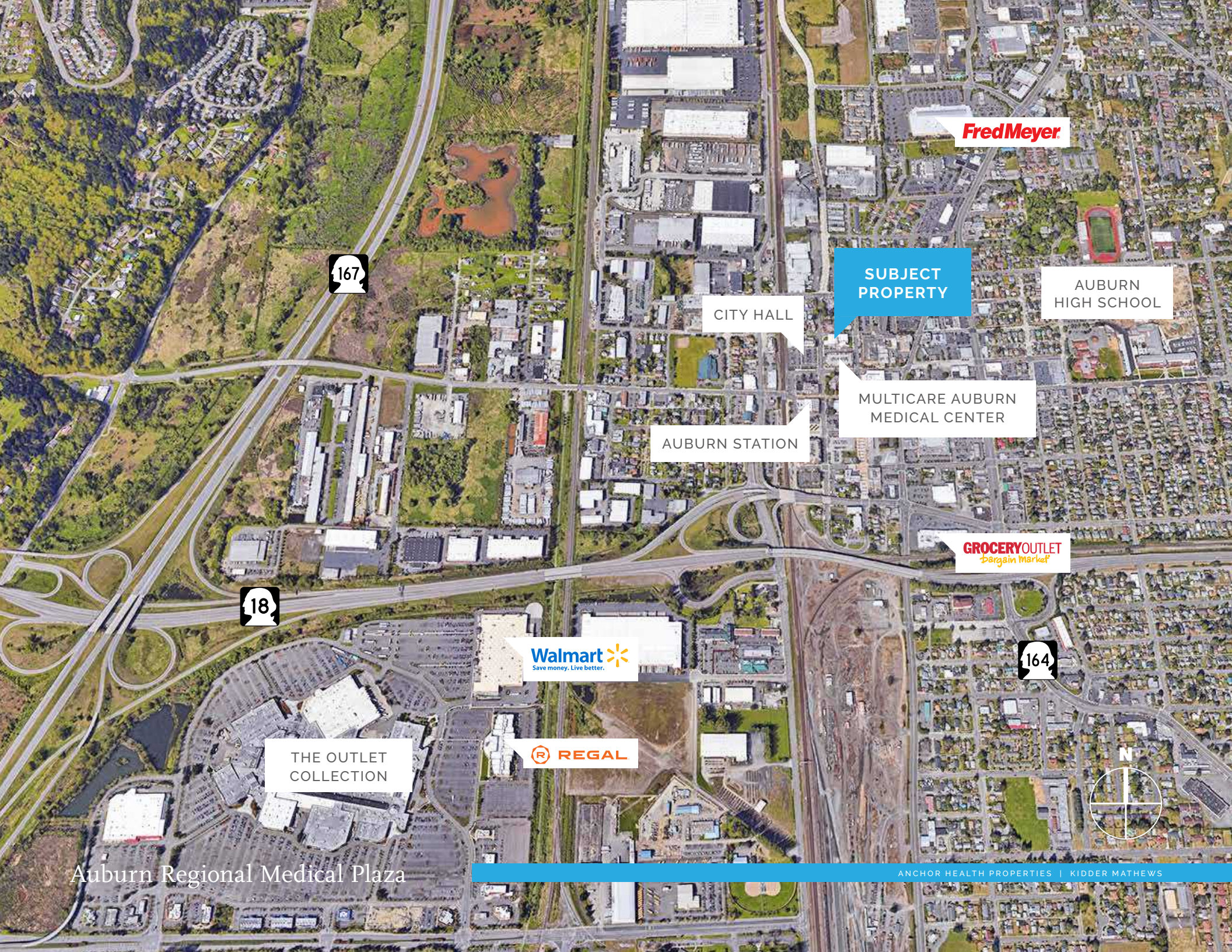


1,367  
SQUARE FEET

Inquire  
FOR LEASE RATE



Auburn Regional Medical Plaza



**Fred Meyer**

**SUBJECT PROPERTY**

**AUBURN HIGH SCHOOL**

**CITY HALL**

**MULTICARE AUBURN MEDICAL CENTER**

**AUBURN STATION**

**GROCERY OUTLET**  
*Bargain Market*



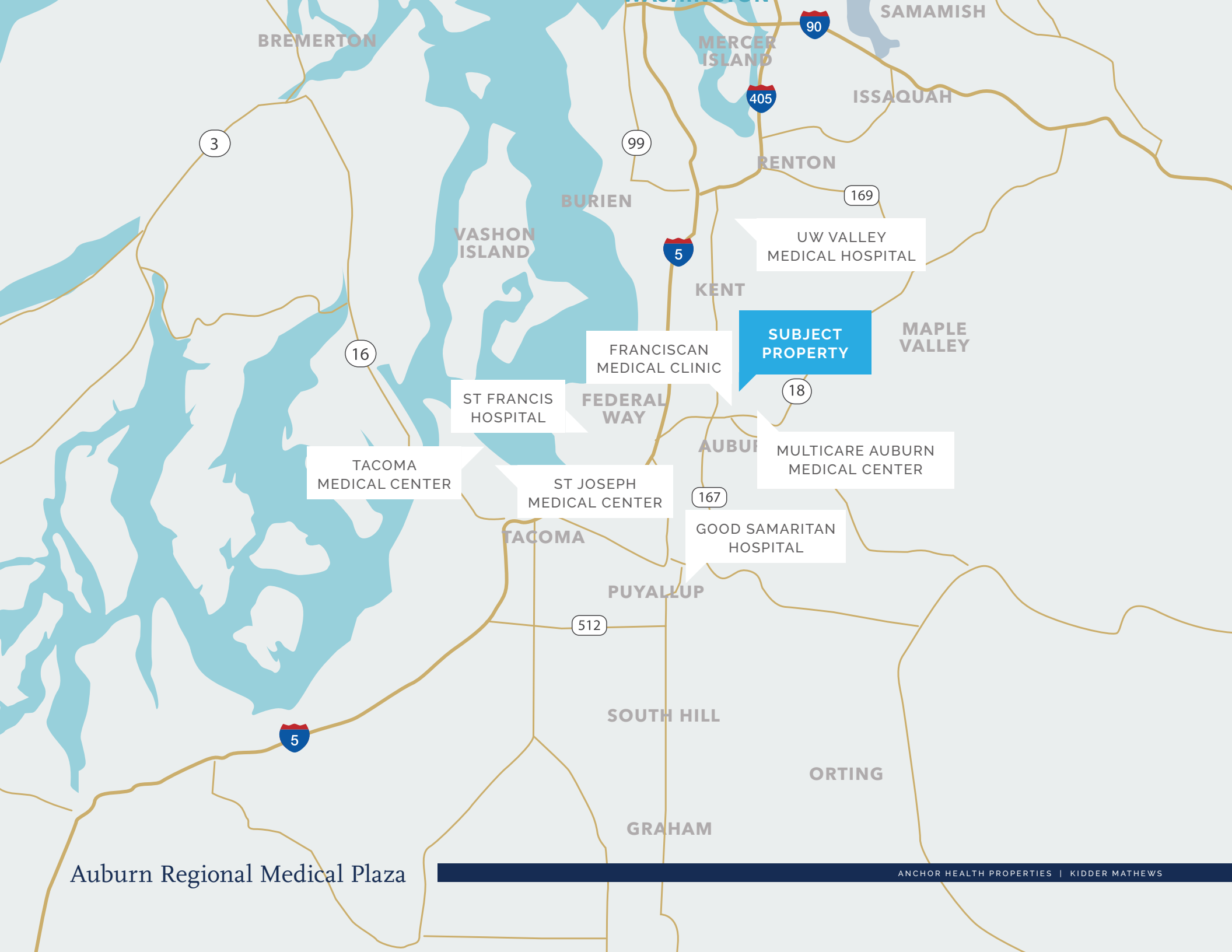
**Walmart**  
Save money. Live better.

**REGAL**

**THE OUTLET COLLECTION**



Auburn Regional Medical Plaza



Auburn Regional Medical Plaza



# Auburn Reginal Medical Plaza

## **WILL FRAME**

Executive Vice President

253.722.1412

[will.frame@kidder.com](mailto:will.frame@kidder.com)

## **DREW FRAME**

Senior Vice President

253.722.1433

[drew.frame@kidder.com](mailto:drew.frame@kidder.com)

## **JOEL SHABEL**

Vice President

253.722.1406

[joel.shabel@kidder.com](mailto:joel.shabel@kidder.com)

## **KIDDER.COM**

This information supplied herein is from sources we deem reliable. It is provided without any representation, warranty, or guarantee, expressed or implied as to its accuracy. Prospective Buyer or Tenant should conduct an independent investigation and verification of all matters deemed to be material, including, but not limited to, statements of income and expenses. Consult your attorney, accountant, or other professional advisor.



OWNED & MANAGED BY

**ANCHOR**  
HEALTH PROPERTIES

EXCLUSIVELY LEASED BY

**km** Kidder  
Mathews