

MERIDIAN PROFESSIONAL CENTER

Premier Class A Office & Medical Office Space

2910 S MERIDIAN | PUYALLUP, WA



2910

DR. CHACON
FACIAL SURGERY CENTER OF PUYALLUP

INSURANCE

[VIEW PROPERTY VIDEO →](#)

OWNED
BY

R
RUSH

LEASING
BY

km Kidder
Mathews

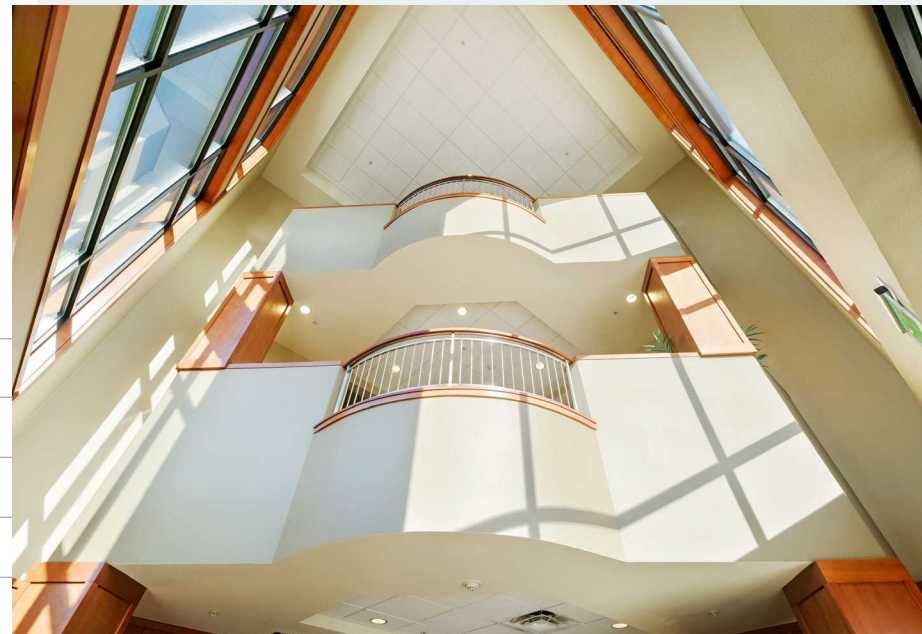
MERIDIAN PROFESSIONAL CENTER

2910 S MERIDIAN | PUYALLUP, WA



The Meridian Professional Center is a four-building campus with brand new Class A office & medical office space in an unbeatable Puyallup location

ADDRESS	2910 S Meridian, Puyallup, WA
VACANT	2,492 - 8,869 SF
RENTAL RATE	\$32.00 PSF, NNN
PARKING	Surface stalls (4.25/1000 SF)
READY TO GO	Office & Medical build-out



[VIEW PROPERTY VIDEO →](#)

MERIDIAN PROFESSIONAL CENTER

Property Features

2910 S MERIDIAN | PUYALLUP, WA



NEW CONSTRUCTION

4 buildings of Class A medical office and office space



UNBEATABLE LOCATION

Located minutes from the Good Samaritan Hospital and major retail center



HEALTHCARE SYNERGY

Good Samaritan Hospital and the Meridian medical corridor promote referral business



ACCESS

Convenient access to Highway 512 and I-5.
Direct access to public transportation and nearby amenities



PARKING

Abundant parking at 4.25/1,000 SF with easy access to and from the campus



FULL FLOOR

Entire third floor is available for occupancy with a mix of medical and office space

[VIEW PROPERTY VIDEO →](#)

MERIDIAN PROFESSIONAL CENTER

2910 S MERIDIAN | PUYALLUP, WA

Suite 300 Full Floor



8,869

SQUARE FEET
AVAILABLE

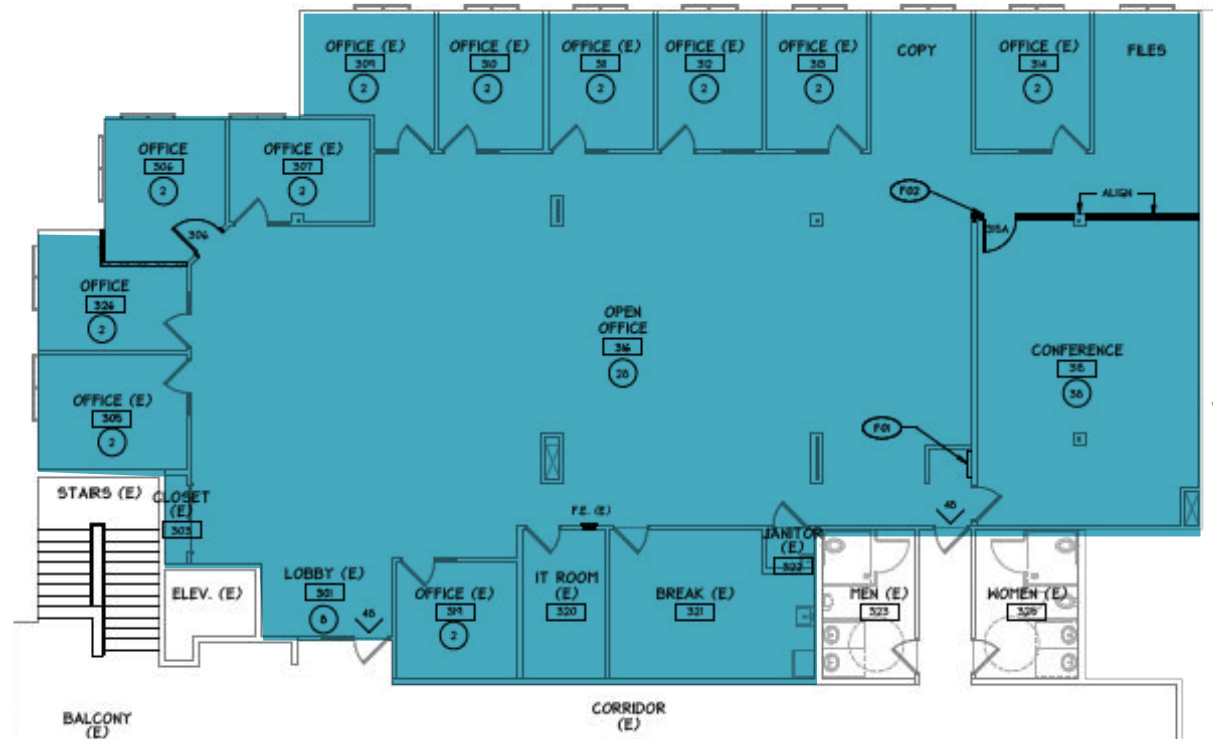
[VIEW PROPERTY VIDEO →](#)

MERIDIAN PROFESSIONAL CENTER

2910 S MERIDIAN | PUYALLUP, WA

Suite 301

6,377
SQUARE FEET
AVAILABLE



[VIEW 3D TOUR](#)



[VIEW PROPERTY VIDEO](#)



MERIDIAN PROFESSIONAL CENTER

2910 S MERIDIAN | PUYALLUP, WA

Suite 301 A & B

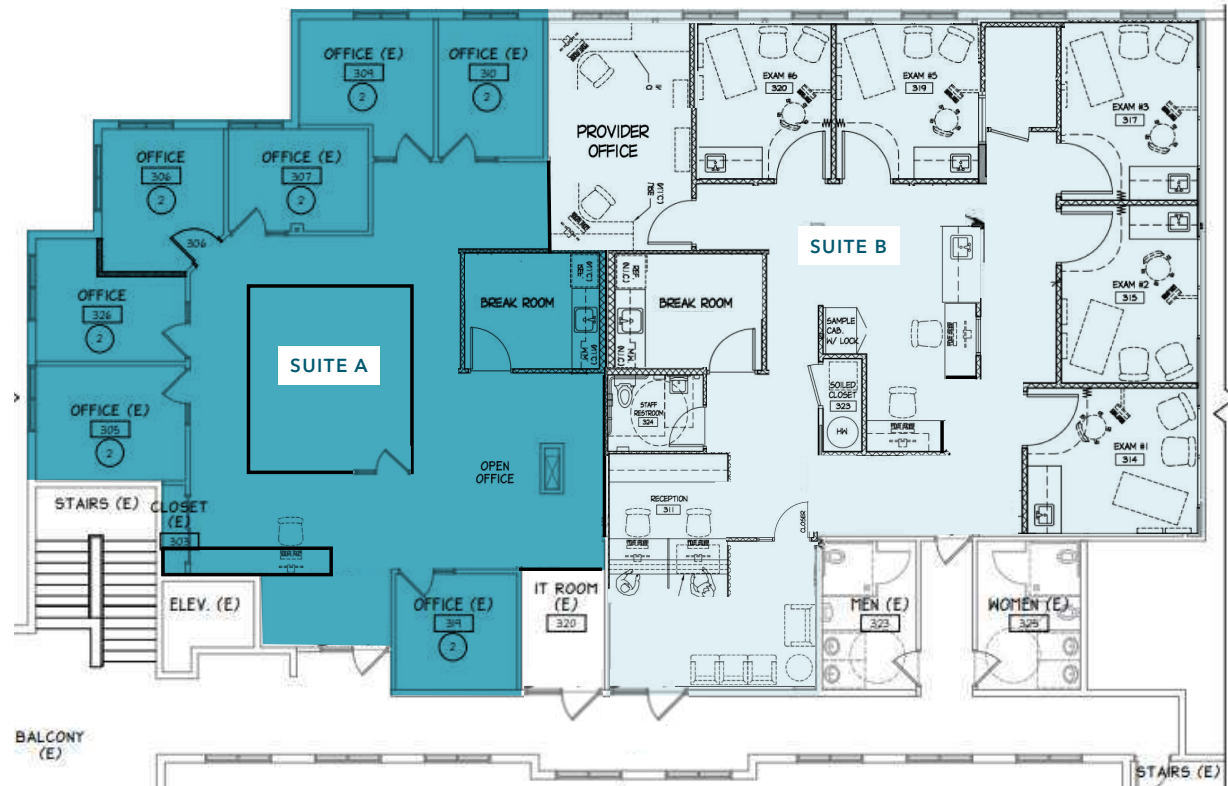
TEST FIT

2,750

SUITE A

3,630

SUITE B



VIEW 3D TOUR



VIEW PROPERTY VIDEO



MERIDIAN PROFESSIONAL CENTER

2910 S MERIDIAN | PUYALLUP, WA

Suite 350

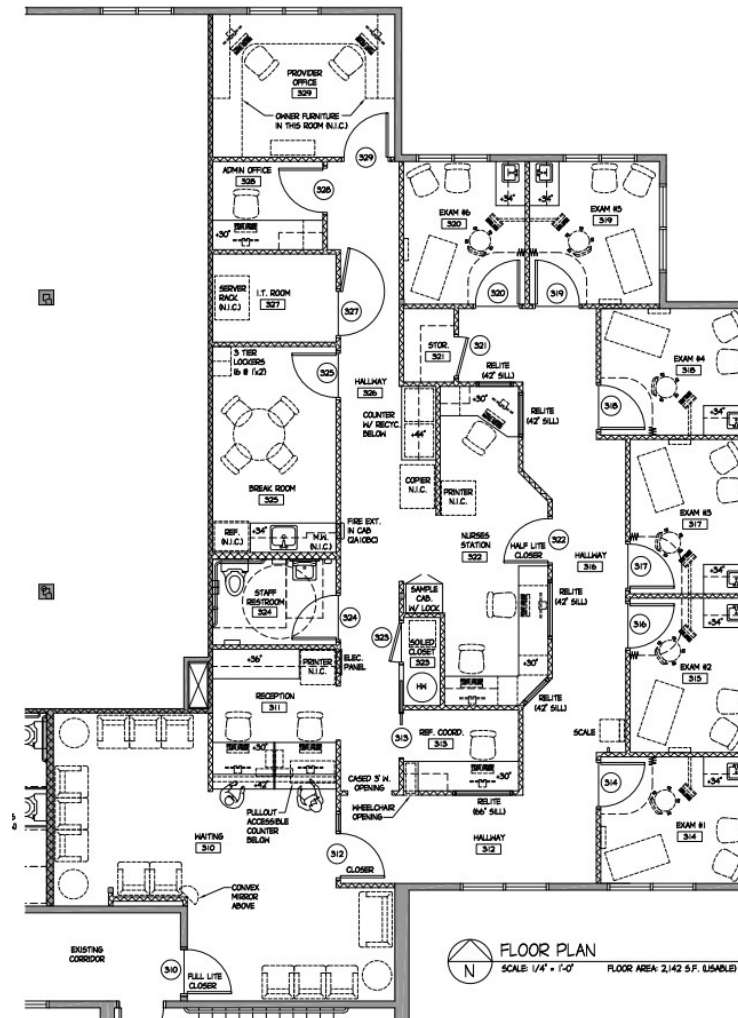
2,492

SQUARE FEET
AVAILABLE

[VIEW 3D TOUR](#)



[VIEW PROPERTY VIDEO](#)



MERIDIAN PROFESSIONAL CENTER

2910 S MERIDIAN | PUYALLUP, WA



[VIEW 3D TOUR](#)



[VIEW PROPERTY VIDEO](#)



 **Kimmer
Mathews**

MERIDIAN PROFESSIONAL CENTER

GOOD
SAMARITAN
HOSPITAL
CAMPUS

ROUTE TO
GOOD SAMARITAN

SUBJECT
PROPERTY

SOUTH HILL MALL

COSTCO
WHOLESALE

Walmart
Save money. Live better.

THE
HOME
DEPOT

LOWE'S

HOBBY
LOBBY

VIEW PROPERTY VIDEO →

The location
your employees
need and your clients
deserve.

5 MIN

DRIVE TO THE GOOD
SAMARITAN HOSPITAL

5 MIN

DRIVE TO
HIGHWAY 512

20 MIN

DRIVE TO
TACOMA CBD

45 MIN

DRIVE TO
SEATTLE CBD

MERIDIAN PROFESSIONAL CENTER

2910 S MERIDIAN | PUYALLUP

For additional leasing information, contact

WILL FRAME

Executive Vice President
253.722.1412
will.frame@kidder.com

DREW FRAME

Senior Vice President
253.722.1433
drew.frame@kidder.com

**VIEW
PROPERTY
VIDEO →**

**OWNED
BY**

R
RUSH

**LEASING
BY**

**km Kidder
Mathews**

This information supplied herein is from sources we deem reliable. It is provided without any representation, warranty, or guarantee, expressed or implied as to its accuracy. Prospective Buyer or Tenant should conduct an independent investigation and verification of all matters deemed to be material, including, but not limited to, statements of income and expenses. Consult your attorney, accountant, or other professional advisor.

KIDDER.COM