

[FOR LEASE]

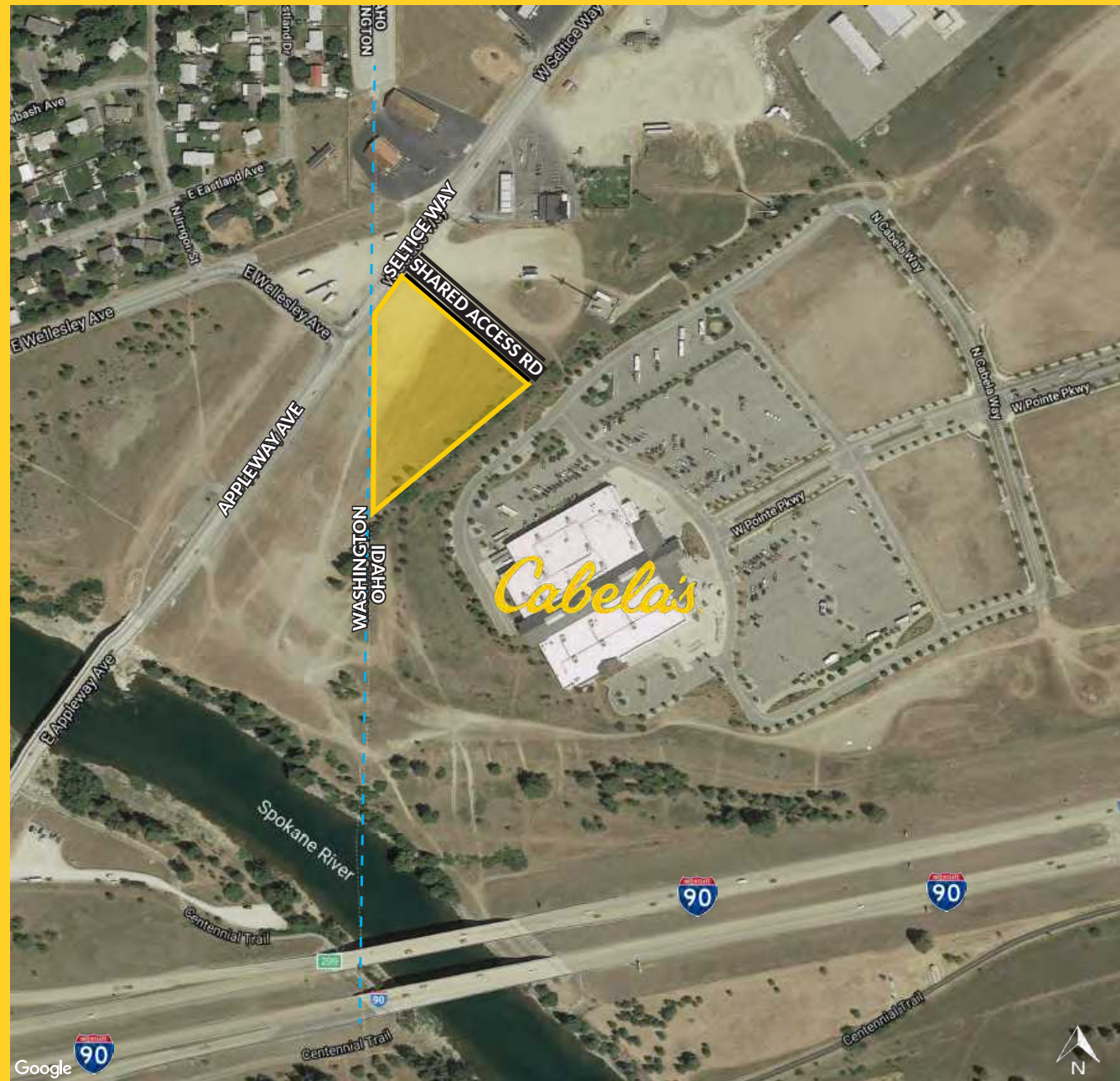
Truck & Trailer Drop Yard

Space Available: ±2.37 Acres

Lease Rate: Negotiable

- Shared Access to Seltice Way
- Easy Access to/from I-90
- Located at the Washington/Idaho Border
- Gravel Surface
- Not Lighted or Secured

A Portion Of:
7250 W. Seltice Way
Post Falls, ID 83854



Pat Eberlin | 208.215.1375 or pat.eberlin@kiemleahagood.com

208.770.2590
2065 W. Riverstone Dr., Suite 101
Coeur d'Alene, ID 83814

**KIEMLE
HAGOOD**



No warranty or representation, expressed or implied, is made by Kiemle Hagood, its agents or its employees as to the accuracy of the information contained herein. All information furnished is from sources deemed reliable and submitted subject to errors, omissions, change of terms and conditions, prior sale, lease or financing, or withdrawal without notice. No one should rely solely on the above information, but instead should conduct their own investigation to independently satisfy themselves.