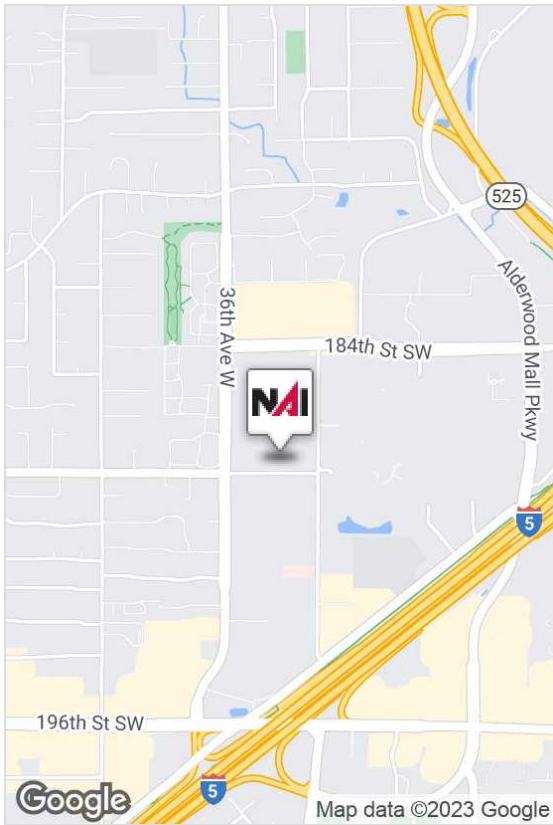


For Lease

Office Suites

2,524 SF



Gesa Lynnwood Building

3405 188th Street SW, Lynnwood, WA 98037

- **Suite 303 - 2,524 RSF.** - Lease ready space with new finishes. Reception area with small conference room and large multipurpose room with kitchenette; and large open area with small private office, large window office, and storage IT closet.
- One block to Alderwood Mall and walking distance to retail, restaurants, and other amenities
- Abundant surface parking

For more information:

Wyk Parker

+1 206 332 1484 • wparker@nai-psp.com

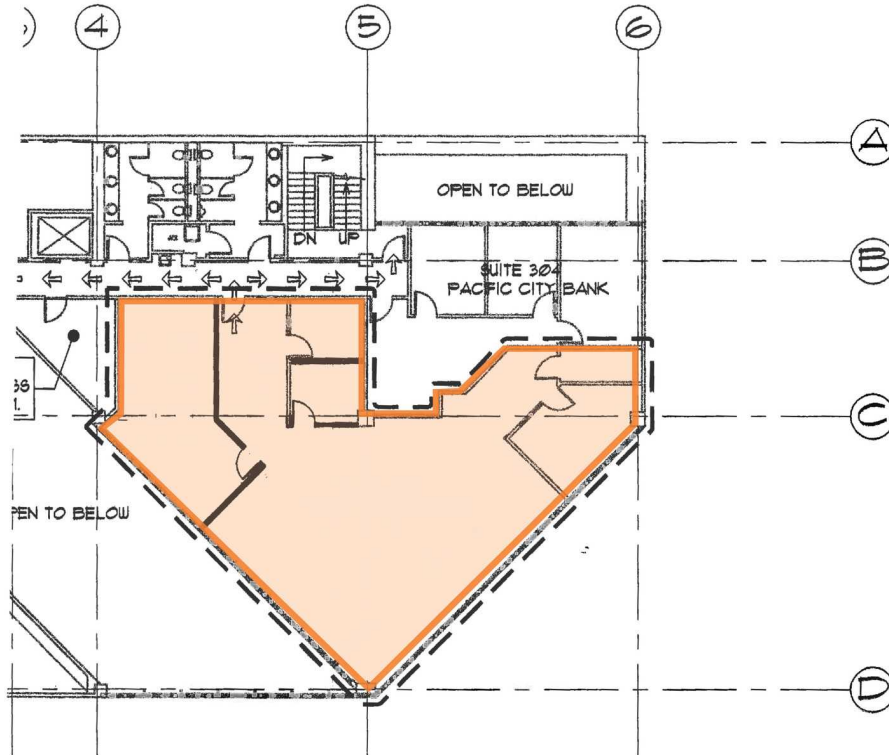


BELLEVUE | SEATTLE | TACOMA

10900 NE 8th Street, Suite 1500
Bellevue, WA 98004
+1 425 586 5600
nai-psp.com

THE INFORMATION CONTAINED HEREIN HAS BEEN GIVEN TO US BY THE OWNER OF THE PROPERTY OR OTHER SOURCES WE DEEM RELIABLE, WE HAVE NO REASON TO DOUBT ITS ACCURACY, BUT WE DO NOT GUARANTEE IT. ALL INFORMATION SHOULD BE VERIFIED PRIOR TO PURCHASE OR LEASE.

Gesa Lynnwood Building



1 SUITE 303 - 2,524 RSF

For more information:

Wyk Parker

+1 206 332 1484 • wparker@nai-psp.com



BELLEVUE | TACOMA

10900 NE 8th Street, Suite 1500
Bellevue, WA 98004
+1 425 586 5600
nai-psp.com

Office for Lease

Gesa Lynnwood Building



Map data ©2019 Google Imagery ©2019 , DigitalGlobe, U.S. Geological Survey, USDA Farm Service Agency



BELLEVUE | TACOMA

10900 NE 8th Street, Suite 1500
Bellevue, WA 98004
+1 425 586 5600
nai-psp.com

THE INFORMATION CONTAINED HEREIN HAS BEEN GIVEN TO US BY THE OWNER OF THE PROPERTY OR OTHER SOURCES WE DEEM RELIABLE, WE HAVE NO REASON TO DOUBT ITS ACCURACY, BUT WE DO NOT GUARANTEE IT. ALL INFORMATION SHOULD BE VERIFIED PRIOR TO PURCHASE OR LEASE.