



# IPTN BUILDING

FOR LEASE | 1035 ANDOVER W | TUKWILA, WA



**Kidder  
Mathews**

2,362 RSF office space available

KIDDER.COM

FOR LEASE

# IPTN Building

1035 ANDOVER PARK W | TUKWILA, WA

2,362 RSF  
office space  
available

**PROMINENT** location

**GREAT** access to I-5  
and I-405

**BUILDING** signage may be  
made available

**QUALITY** office space with  
abundant parking



**SPENCER CLAPP**  
206.248.7427  
[spencer.clapp@kidder.com](mailto:spencer.clapp@kidder.com)

[KIDDER.COM](http://KIDDER.COM)

This information supplied herein is from sources we deem reliable. It is provided without any representation, warranty, or guarantee, expressed or implied as to its accuracy. Prospective Buyer or Tenant should conduct an independent investigation and verification of all matters deemed to be material, including, but not limited to, statements of income and expenses. Consult your attorney, accountant, or other professional advisor.

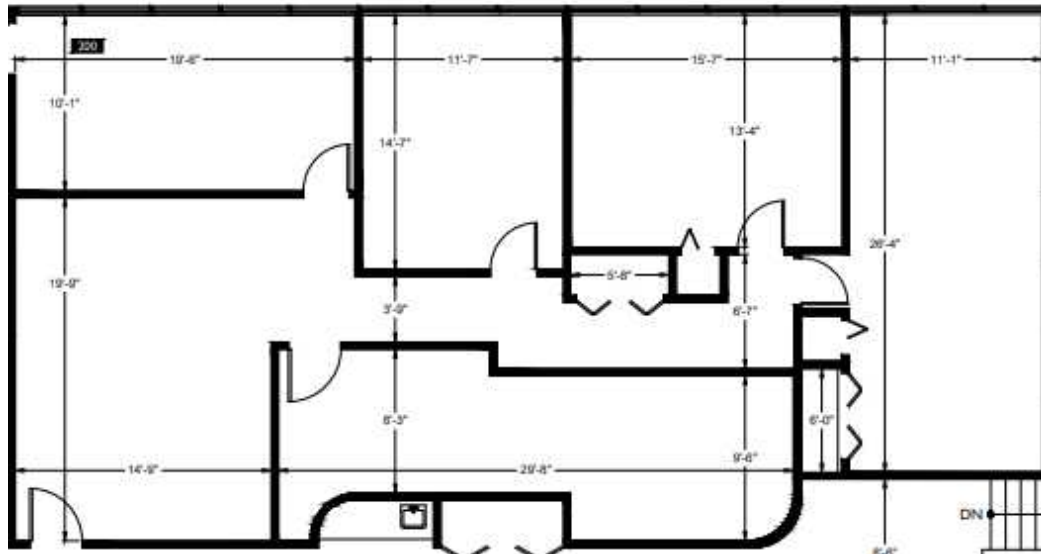
**km** Kidder  
Mathews

FOR LEASE

# IPTN Building

1035 ANDOVER PARK W | TUKWILA, WA

## Tenant Floor Plan



210

SUITE

2,362

RENTABLE SF

SPENCER CLAPP

206.248.7427

[spencer.clapp@kidder.com](mailto:spencer.clapp@kidder.com)

KIDDER.COM

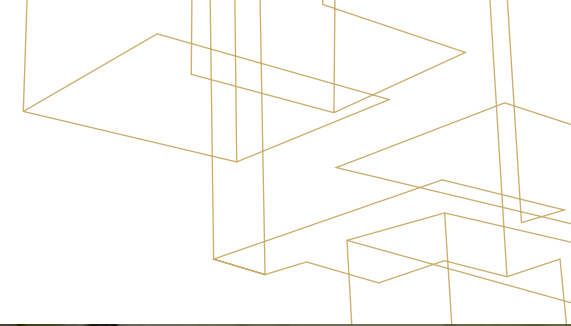
This information supplied herein is from sources we deem reliable. It is provided without any representation, warranty, or guarantee, expressed or implied as to its accuracy. Prospective Buyer or Tenant should conduct an independent investigation and verification of all matters deemed to be material, including, but not limited to, statements of income and expenses. Consult your attorney, accountant, or other professional advisor.



**FOR LEASE**

# IPTN Building

1035 ANDOVER PARK W | TUKWILA, WA



[KIDDER.COM](https://www.kidder.com)

This information supplied herein is from sources we deem reliable. It is provided without any representation, warranty, or guarantee, expressed or implied as to its accuracy. Prospective Buyer or Tenant should conduct an independent investigation and verification of all matters deemed to be material, including, but not limited to, statements of income and expenses. Consult your attorney, accountant, or other professional advisor.

