

BEL-RED PLACE - Building B

Former Coldwell Banker Headquarters

12721 NE Bel-Red Road, Bellevue WA 98005



FOR LEASE

Professional Office / Medical / Dental Space

Josh Heyum

Principal & Broker

425.445.5799

joshheyum@gmail.com

Jake Staniszewski

Associate & Broker

425.284.4270 ext. 1009

jake@vistapacificgroupinc.com



BEL-RED PLACE - Building B

12721 NE Bel-Red Road, Bellevue WA 98005

| Suite | SF | Rate | Availability |
|-----------|-----------------------------|----------------|--------------|
| Ist Floor | 9,334 RSF (Div. to 750 RSF) | \$36/SF/Yr, MG | Q1 2023 |
| 2nd Floor | 7,567 RSF (Div. to 750 RSF) | \$36/SF/Yr, MG | Q1 2023 |
| Total | 16,901 RSF | \$36/SF/Yr, MG | Q1 2023 |

Building Features

- Excellent Spring District Location
- Ample Surface & Covered Parking
- Prominent Building Signage
- Extensive Glass-Line
- Tranquil Park-like Setting
- Full-Floor / Building Available
- Efficient Configuration

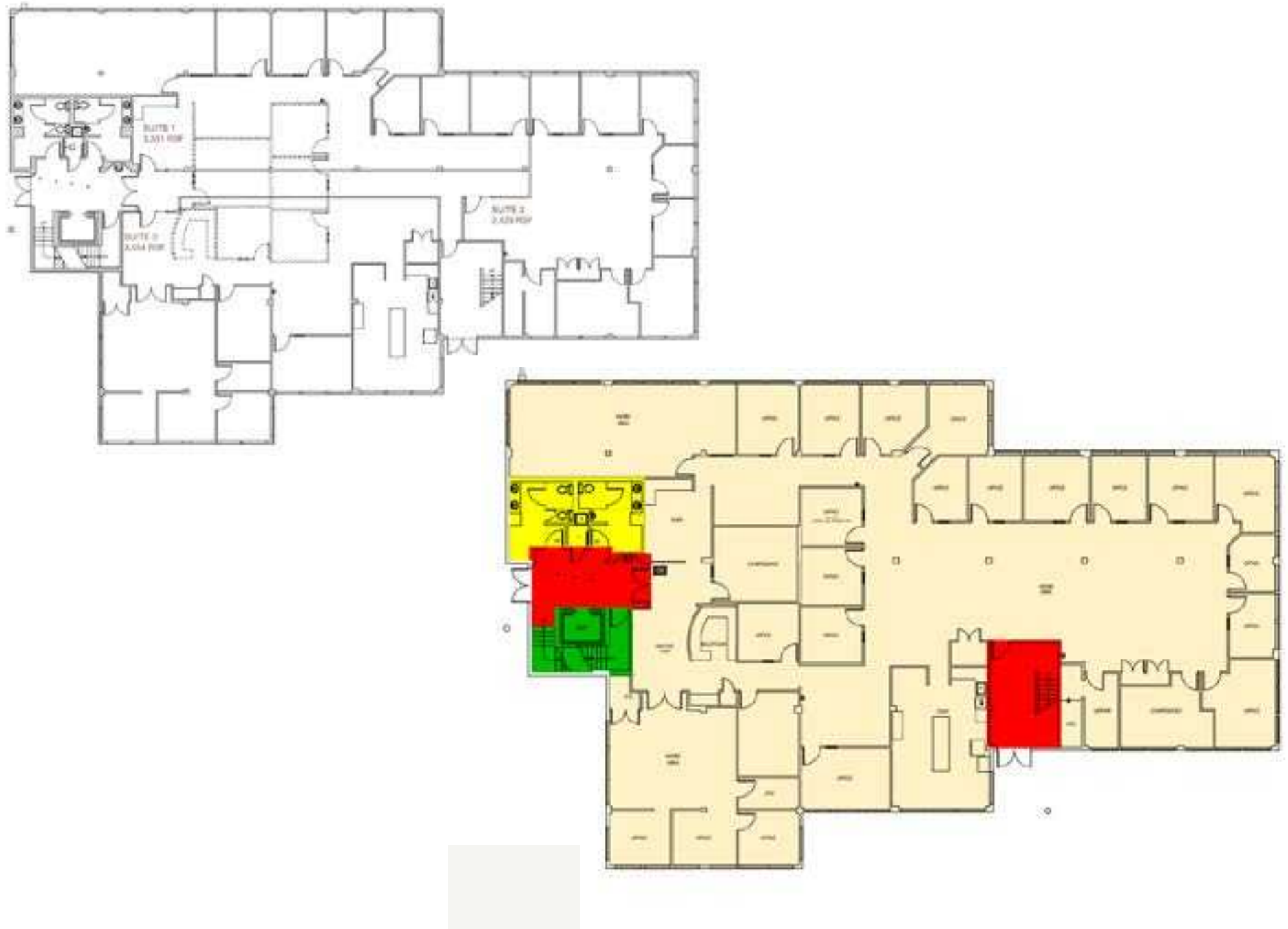


Josh Heyum
Principal & Broker
425.445.5799
joshheyum@gmail.com

Jake Staniszewski
Associate & Broker
425.284.4270 ext. 1009
jake@vistapacificgroupinc.com



1st Floor



2nd Floor

