

Logan Building

500 Union Street

500 Union Street
Seattle, WA 98101

6,519 RSF Sublease - Available Immediately



Logan Building

500 Union Street | Seattle, WA 98101



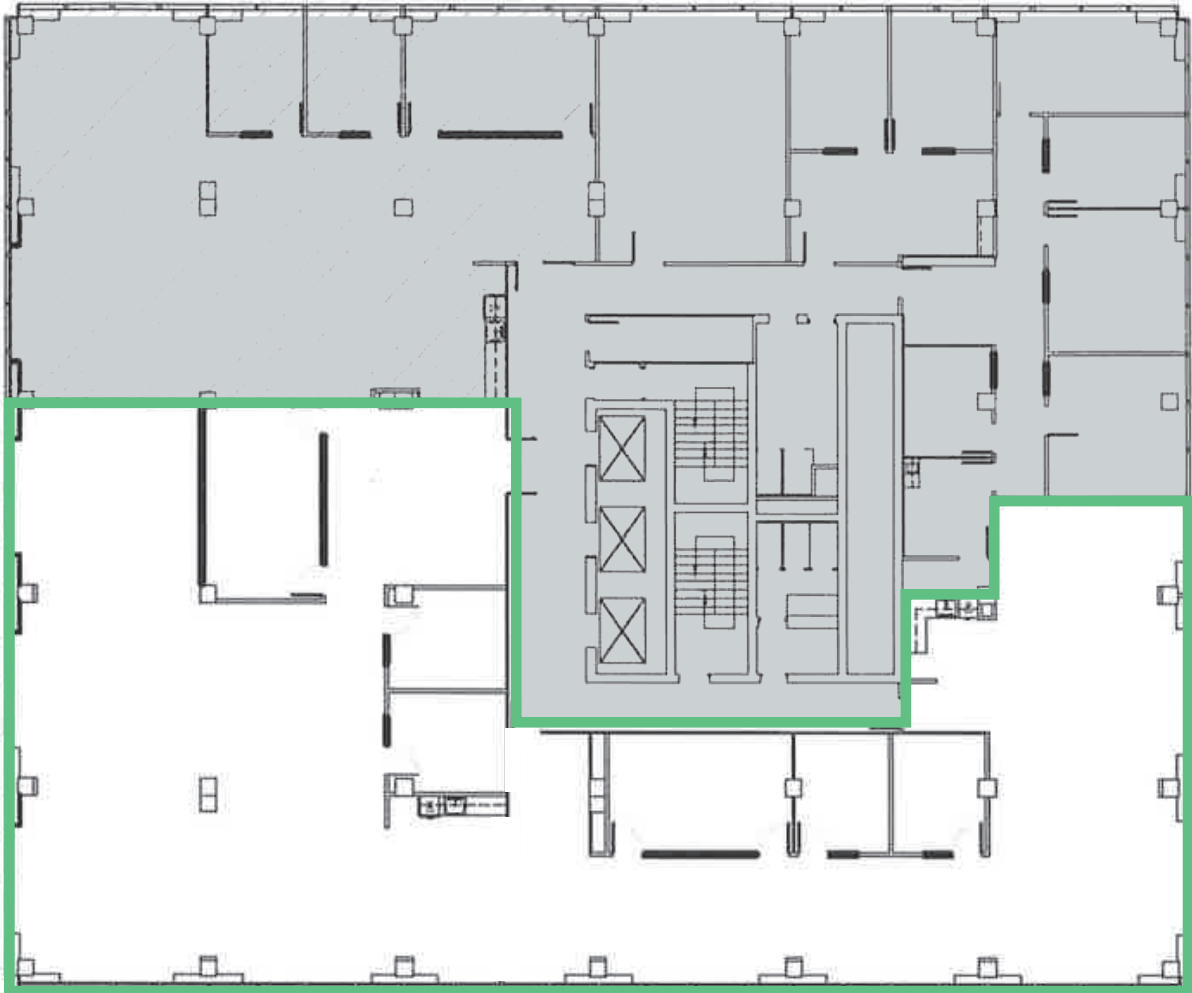
Click for Virtual Tour



Property Features

- Suite 520/545 (One Suite) - 6,519 RSF
- Available immediately
- Sublease term through November 30, 2024
- Plug & play with FF&E/AV available
- Exposed ceilings with concrete, wood and glass finishes throughout for a creative feel
- Open layout with small/medium-sized meeting rooms throughout the space
- 50-yard line location in Downtown Seattle, within walking distance to food/retail/mass transit





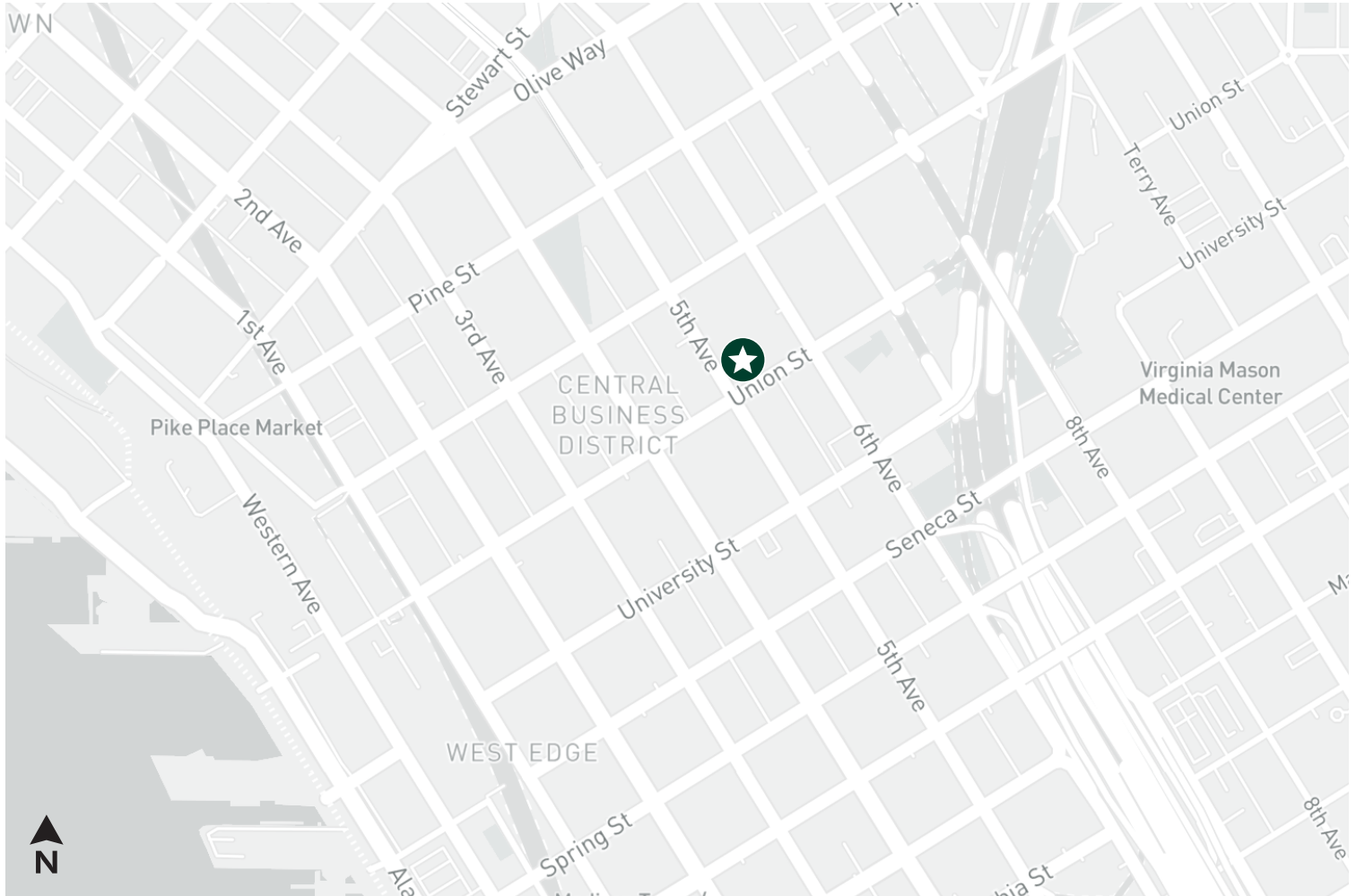
Click for Virtual Tour



Logan Building

500 Union Street | Seattle, WA 98101

For Sublease



Contact Us

Dan Marconi

Senior Associate

+1 206 292 6172

dan.marconi@cbre.com

Brian Biege

Senior Vice President

+1 425 922 2610

brian.biege@cbre.com

© 2023 CBRE, Inc. All rights reserved. This information has been obtained from sources believed reliable, but has not been verified for accuracy or completeness. You should conduct a careful, independent investigation of the property and verify all information. Any reliance on this information is solely at your own risk. CBRE and the CBRE logo are service marks of CBRE, Inc. All other marks displayed on this document are the property of their respective owners, and the use of such logos does not imply any affiliation with or endorsement of CBRE. Photos herein are the property of their respective owners. Use of these images without the express written consent of the owner is prohibited.