

# SQUALICUM LOFT SPACE

BRIGHT, MODERN WELL-EQUIPPED FLEX SUITE

909 SQUALICUM WAY #101, BELLINGHAM WA 98225



2 Dedicated  
Parking Spaces



**FOR LEASE**  
**\$2,600/ MO + NNN**

- 1,586 SF
- EASILY ACCESSABLE
- EXTENSIVE BUILDOUT + AMENITIES
- 2 DEDICATED PARKING SPACES



# PROPERTY SUMMARY

## 909 SQUALICUM WAY #101

Beautifully equipped suite in the coveted Squalicum Lofts Complex, ready for immediate use. Extensive build-out has been completed for amenities and workflow alike. Space is currently setup for a dental lab and has abundant storage throughout along with expansive counter space. As is, would also be perfect for dog grooming, lab testing,

### AMENITIES

- Mini-split
- Large programmable fan
- Equipped with pneumatic & vacuum lines throughout space (compressor & vacuum units have been removed- lines remain)
- 3-Phase power
- Sprinklers
- Roll-Up door (with motorized windproof shade)
- Hood for Dust collection
- Extensive Lighting Upgrades
- 2 Dedicated Parking Spaces

### PROPERTY OVERVIEW

**Address:** 909 Squalicum Way #101, Bellingham WA

**APN:** 3802241151960008

**Total SF:** 1,586

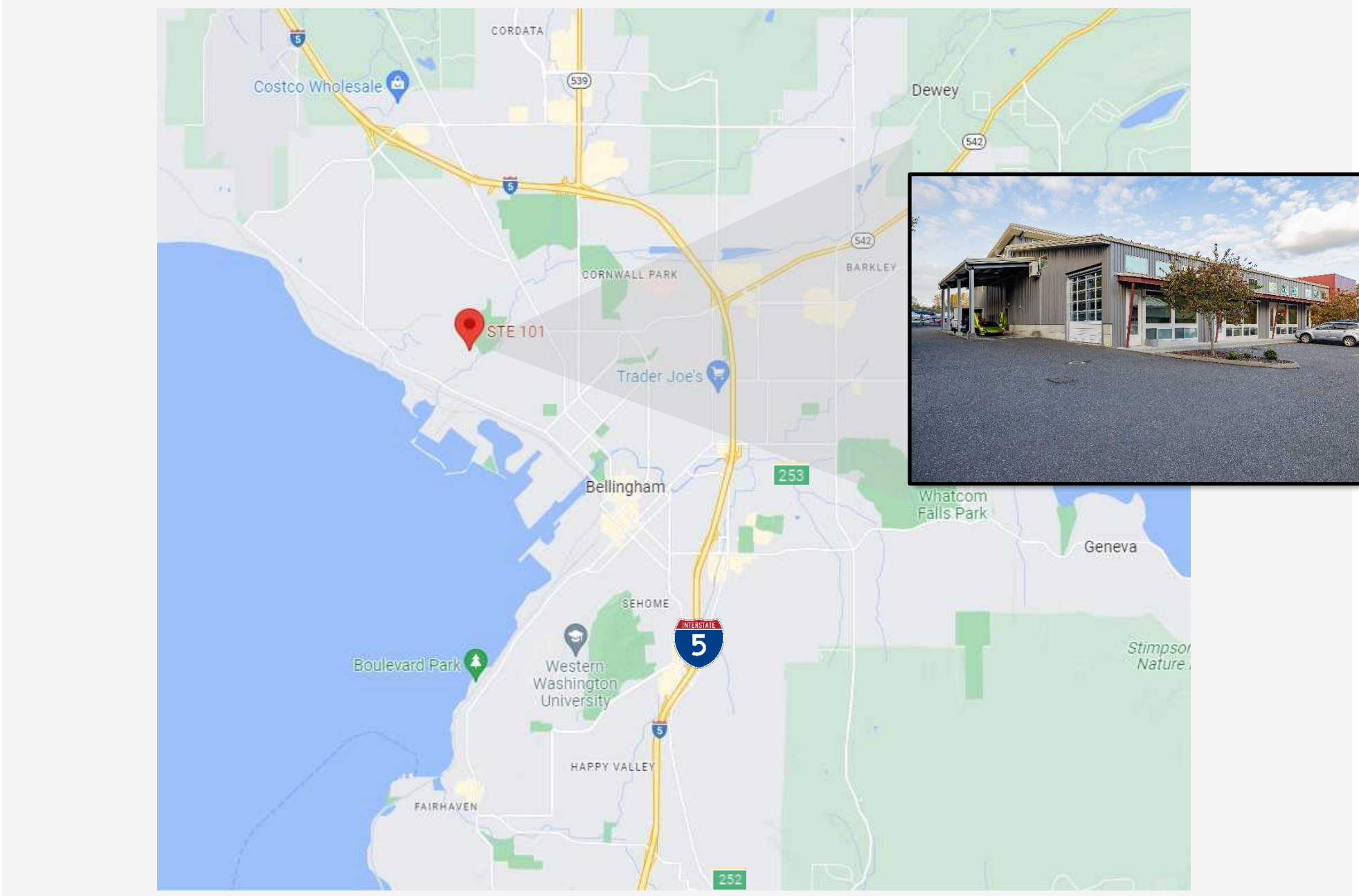
**Year Built:** 2010

**Market:** Bellingham

**HVAC:** Mini Split

SQUALICUM LOFTS				
	SF	BASE RENT	EXPENSES	MONTHLY TOTAL
101	1,586	\$2,600 (\$19.68/ SF/ YR)	\$635.72 (\$4.81/ SF/ YR)	\$3,223.56

# MAP





# **SITE PLAN & FLOOR PLANS**

---





**PROPERTY PHOTOS**

---

# PHOTOS

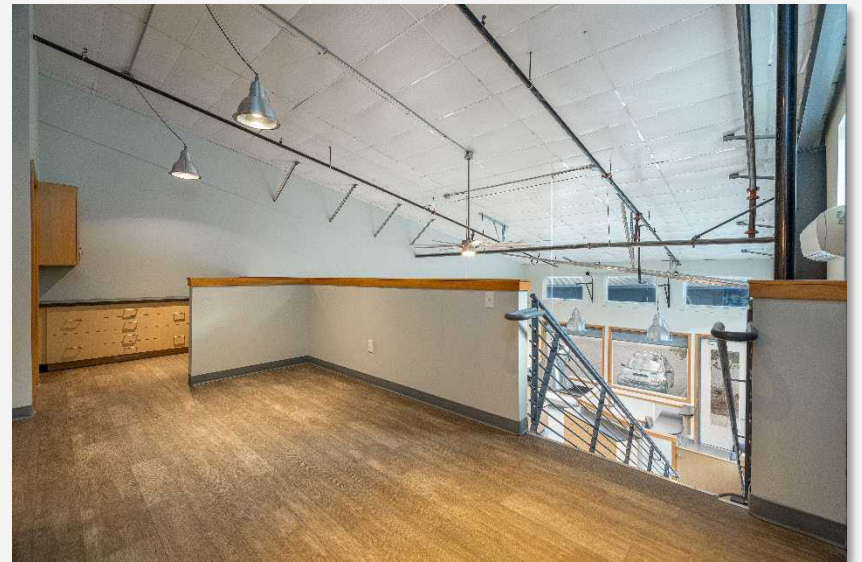


# PHOTOS





# EXTERIOR PHOTOS



# EXTERIOR PHOTOS





FOR MORE INFORMATION

PLEASE CONTACT:

TRACY CARPENTER

GAGE COMMERCIAL REAL ESTATE, LLC.

BROKER/OWNER

360.303.2608

TRACY@GAGECRE.COM

GREG MARTINEAU, CCIM

GAGE COMMERCIAL REAL ESTATE, LLC.

BROKER/OWNER

360.820.4645

GREG@GAGECRE.COM