



3101 MEDICAL CENTER

FOR LEASE | 3101 NORTHUP WAY | BELLEVUE, WA

km Kidder Mathews

FOR LEASE

3101 Medical Center

3101 NORTHUP WAY, BELLEVUE, WA 98004



1st floor 2,187 RSF

Rental rate \$40.00/SF, NNN

Free surface parking/ratio
4.6/1,000 SF

42,086 SF medical building
undergoing complete
renovation

Situated on 124,878 SF /
2.87 acres of land

Building improvements
include new HVAC,
windows, skylight, and large
steel-framed glass awning
for covered patient drop-off

Fully-sprinklered and
equipped with backup
generator

Short distance from
Downtown Bellevue

Easy freeway access to
SR 520 and I-405

KEITH HONSBERGER

425.450.1107

keith.honsberger@kidder.com

ALEX ANDREA

425.450.1163

alex.andrea@kidder.com

KIDDER.COM

This information supplied herein is from sources we deem reliable. It is provided without any representation, warranty, or guarantee, expressed or implied as to its accuracy. Prospective Buyer or Tenant should conduct an independent investigation and verification of all matters deemed to be material, including, but not limited to, statements of income and expenses. Consult your attorney, accountant, or other professional advisor.

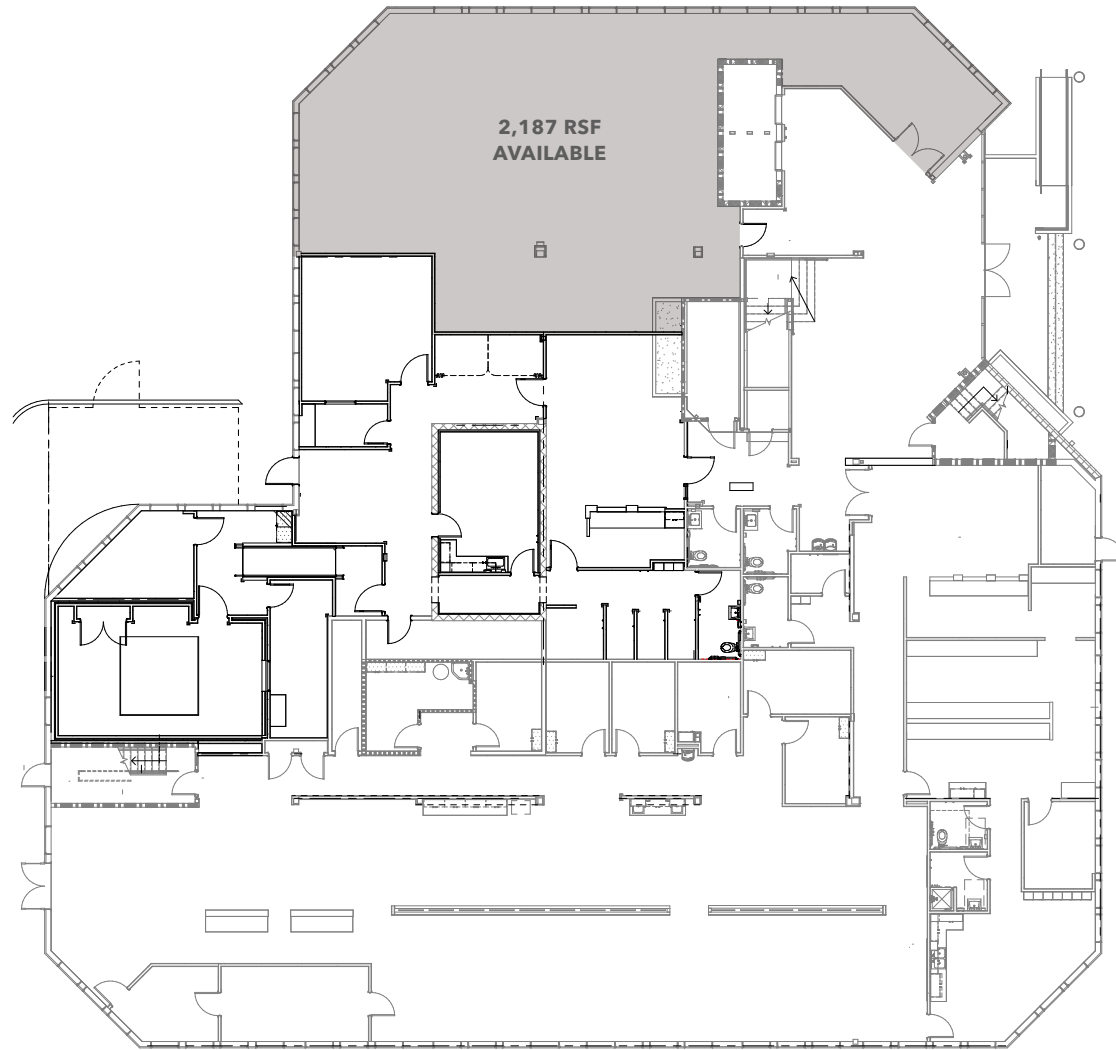
km Kidder Mathews

FOR LEASE

3101 Medical Center

3101 NORTHUP WAY, BELLEVUE, WA 98004

First Floor Plan



KIDDER.COM

This information supplied herein is from sources we deem reliable. It is provided without any representation, warranty, or guarantee, expressed or implied as to its accuracy. Prospective Buyer or Tenant should conduct an independent investigation and verification of all matters deemed to be material, including, but not limited to, statements of income and expenses. Consult your attorney, accountant, or other professional advisor.

km Kidder
Mathews

FOR LEASE

3101 Medical Center

3101 NORTHUP WAY, BELLEVUE, WA 98004



KIDDER.COM

This information supplied herein is from sources we deem reliable. It is provided without any representation, warranty, or guarantee, expressed or implied as to its accuracy. Prospective Buyer or Tenant should conduct an independent investigation and verification of all matters deemed to be material, including, but not limited to, statements of income and expenses. Consult your attorney, accountant, or other professional advisor.

km Kidder Mathews