



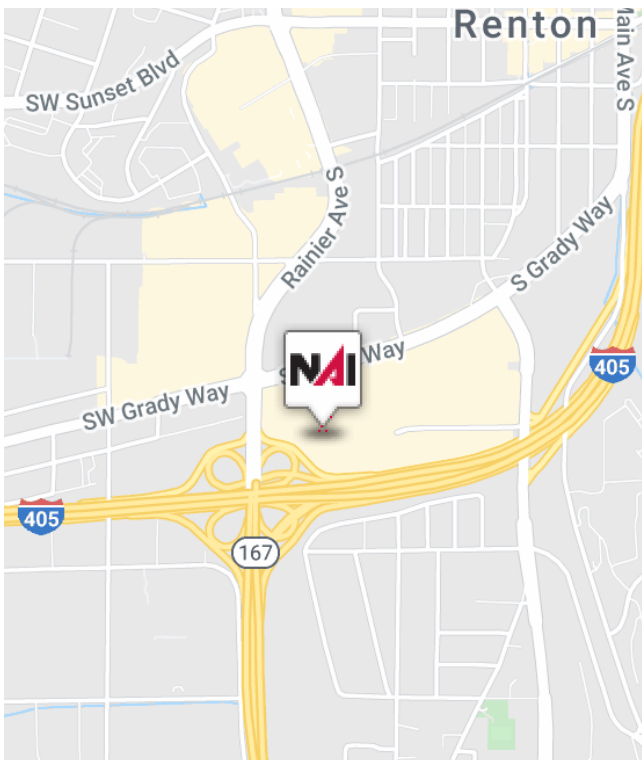
FOR LEASE



PROFESSIONAL OFFICE



611 - 9,243 SF



Evergreen Building

15 S Grady Way, Renton, WA 98057

AVAILABLE SUITES

SUITE 200 - 9,243 RSF*	SUITE 347 - 697 RSF
SUITE 249 - 1,346 RSF	SUITE 510 - 611 RSF
SUITE 250 - 449 RSF	SUITE 514 - 645 RSF
SUITE 300 - 1,686 RSF	SUITE 622 - 1,380 RSF
SUITE 330 - 2,783 RSF	SUITE 618 - 2,126 RSF

*Suite 200 Available 7/1/2023

- 6-story high-rise in excellent location
- Convenient access to I-405, SR-167 and I-5
- Ample parking, at 4/1000 SF
- On-site property management & conference rooms
- Nearby retail amenities at Renton Village
- Rental Rate: \$28.50 to \$29.50 per RSF, Full Service



Mike George
Partner | 425.586.5618
mgeorge@nai-psp.com

Tony Rona
Vice President | 425.586.5634
trona@nai-psp.com



FOR LEASE



PROFESSIONAL OFFICE



611 - 9,243 SF

Suite 200 - 9,243 RSF; Available 1/1/2023

Suite 249 - 1,346 RSF

Suite 250 - 449 RSF



www.nai-psp.com

Mike George
 Partner | 425.586.5618
 mgeorge@nai-psp.com

Tony Rona
 Vice President | 425.586.5634
 trona@nai-psp.com

THE INFORMATION SUPPLIED HEREIN IS FROM SOURCES WE DEEM RELIABLE. IT IS PROVIDED WITHOUT ANY REPRESENTATION, WARRANTY OR GUARANTEE, EXPRESSED OR IMPLIED, AS TO ITS ACCURACY. PROSPECTIVE BUYER OR TENANT SHOULD CONDUCT AN INDEPENDENT INVESTIGATION AND VERIFICATION OF ALL MATTERS DEEMED TO BE MATERIAL, INCLUDING, BUT NOT LIMITED TO, STATEMENTS OF INCOME AND EXPENSES. CONSULT YOUR ATTORNEY, ACCOUNTANT OR OTHER PROFESSIONAL ADVISOR.



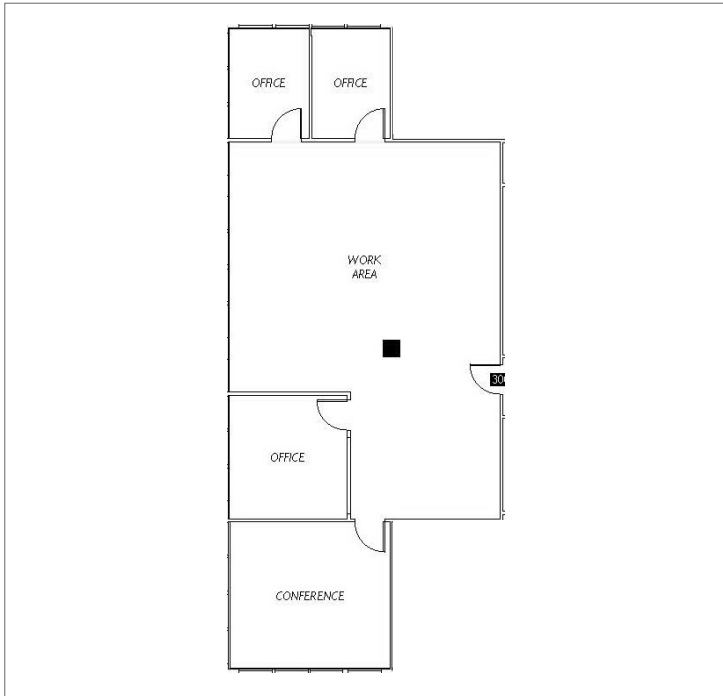
FOR LEASE



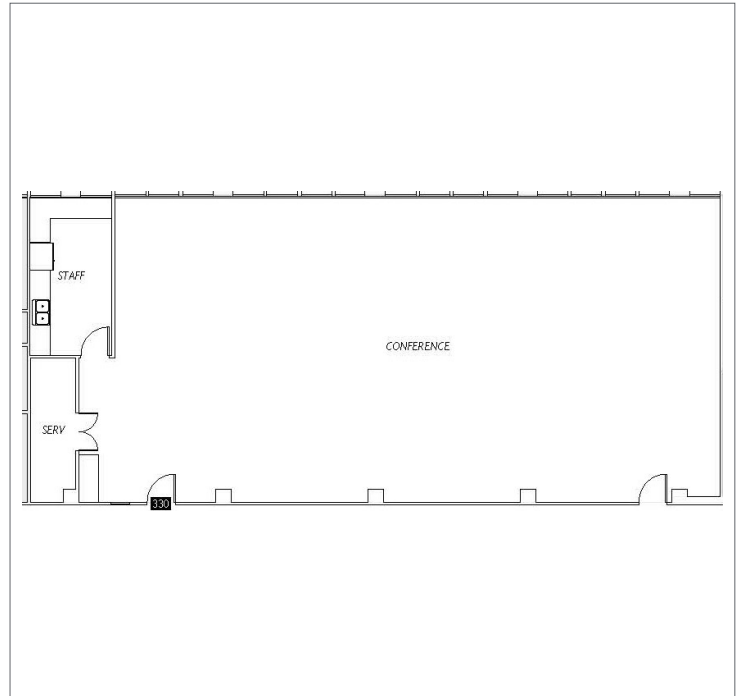
PROFESSIONAL OFFICE



611 - 9,243 SF



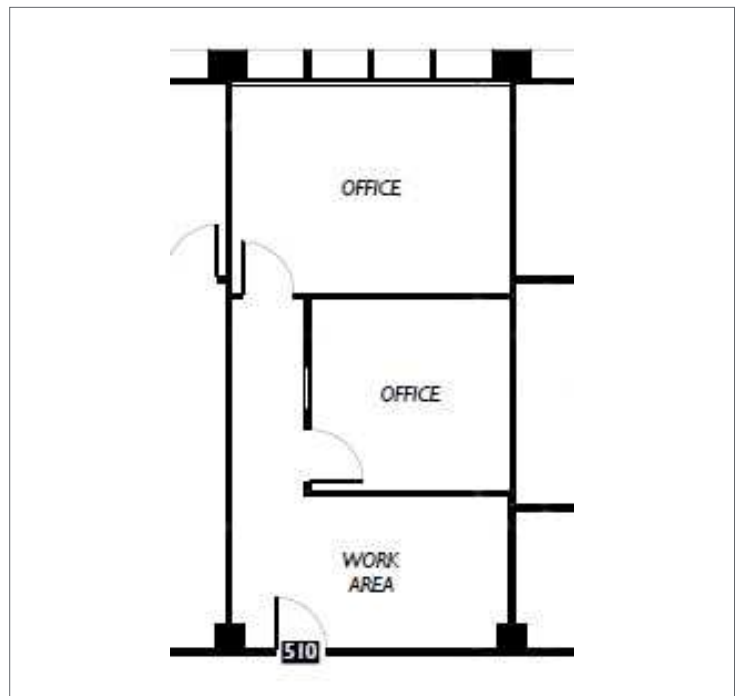
Suite 300 - 1,686 RSF



Suite 330 - 2,783 RSF



Suite 347 - 697 RSF



Suite 510 - 611 RSF



Mike George
Partner | 425.586.5618
mgeorge@nai-psp.com

Tony Rona
Vice President | 425.586.5634
trona@nai-psp.com



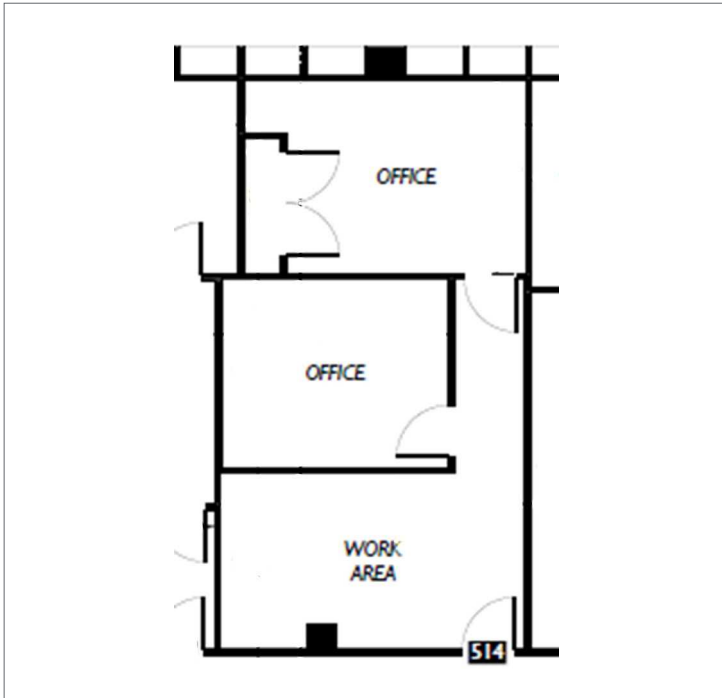
FOR LEASE



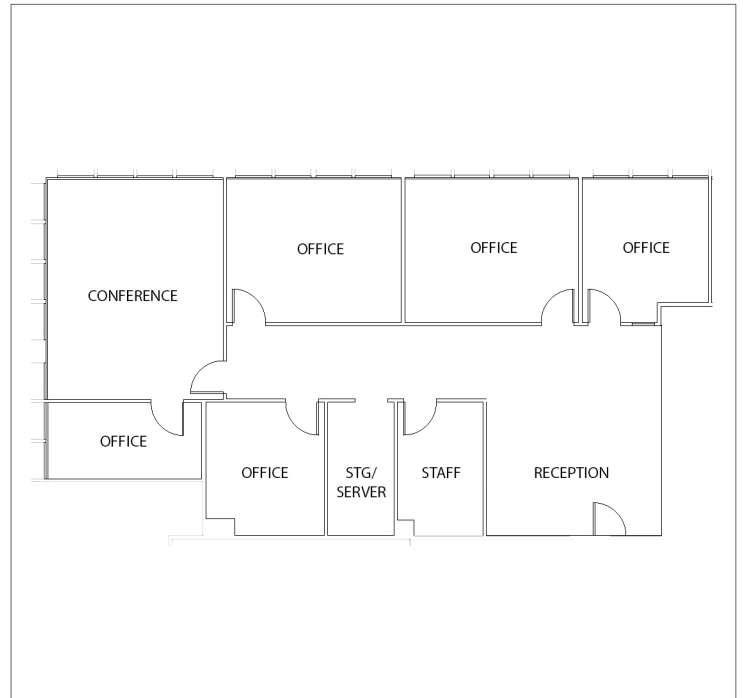
PROFESSIONAL OFFICE



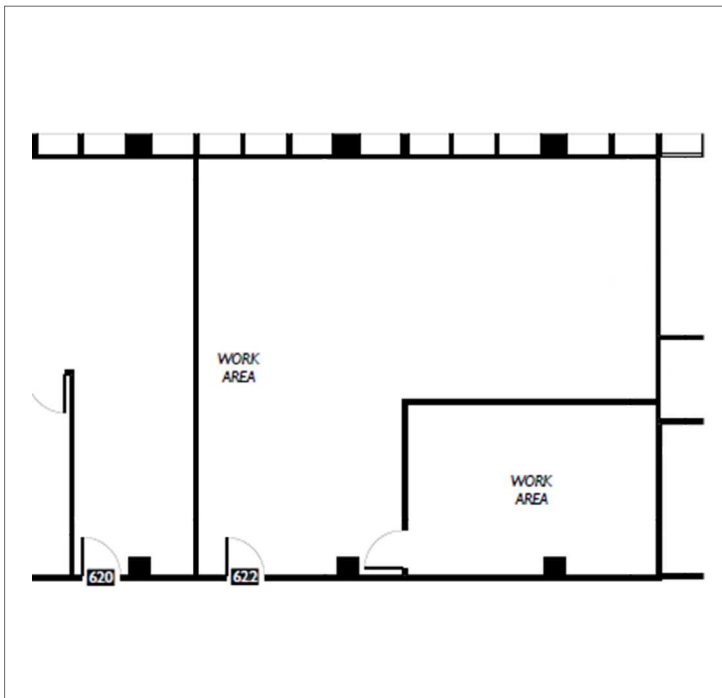
611 - 9,243 SF



Suite 514 - 645 RSF



Suite 618 - 2,126 RSF



Suite 622 - 1,380 RSF



Mike George
Partner | 425.586.5618
mgeorge@nai-psp.com

Tony Rona
Vice President | 425.586.5634
trona@nai-psp.com



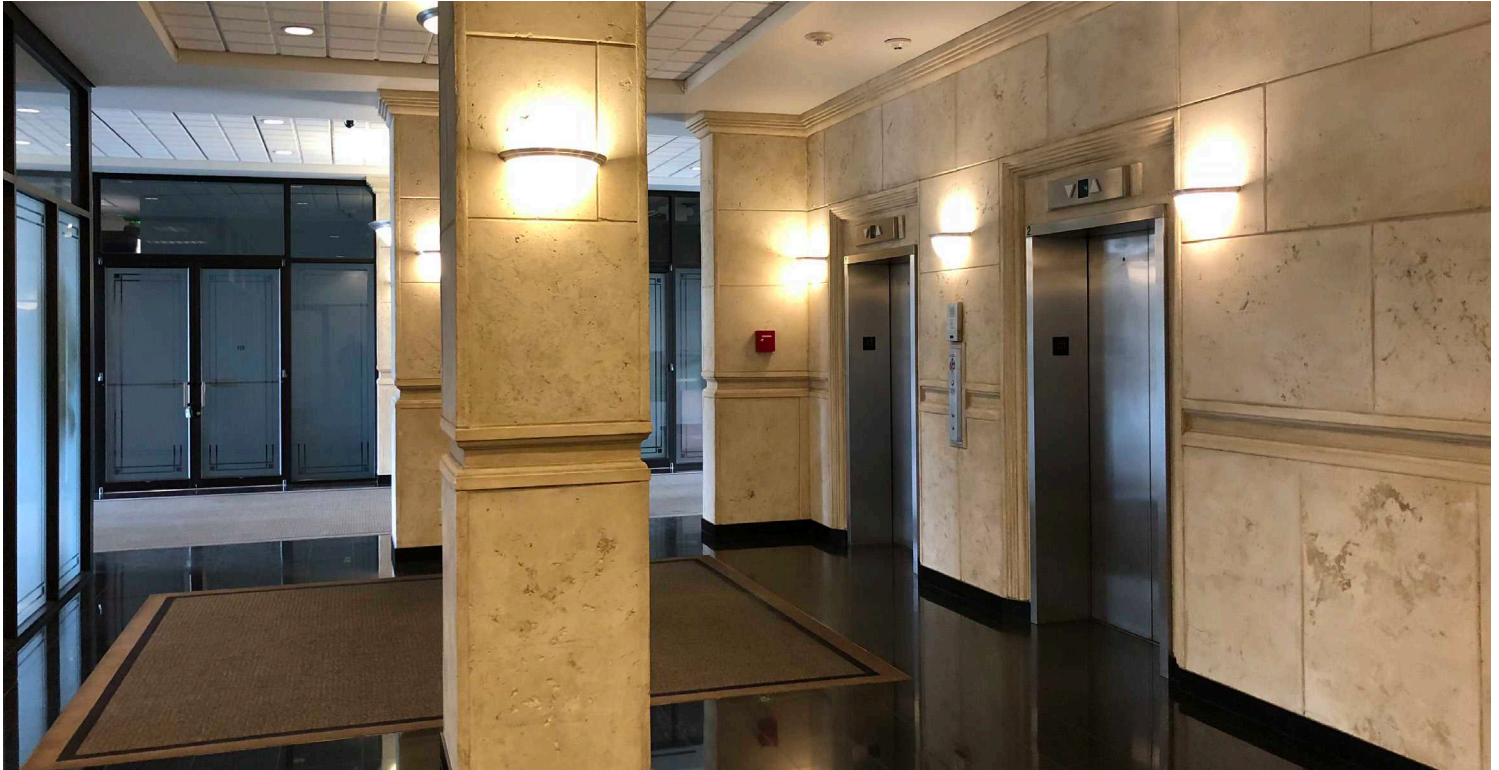
FOR LEASE



PROFESSIONAL OFFICE



611 - 9,243 SF



Mike George
Partner | 425.586.5618
mgeorge@nai-psp.com

Tony Rona
Vice President | 425.586.5634
trona@nai-psp.com



FOR LEASE



PROFESSIONAL OFFICE



611 - 9,243 SF



Mike George
 Partner | 425.586.5618
 mgeorge@nai-psp.com

Tony Rona
 Vice President | 425.586.5634
 trona@nai-psp.com