



# 3900 Building

3900 EAST VALLEY ROAD, RENTON, WA

# FOR LEASE



Dr. Kenza Dental Care	203	Seattle Gold Grills	100
Washington Patrol Division	101	Shelgren Financial Group	202
Renew Physical Therapy	103	SmartTalent	200
		Stepping Stone Pediatrics	204

**Kidder Mathews**

**BRIAN CLAPP**  
206.248.7316  
[brian.clapp@kidder.com](mailto:brian.clapp@kidder.com)

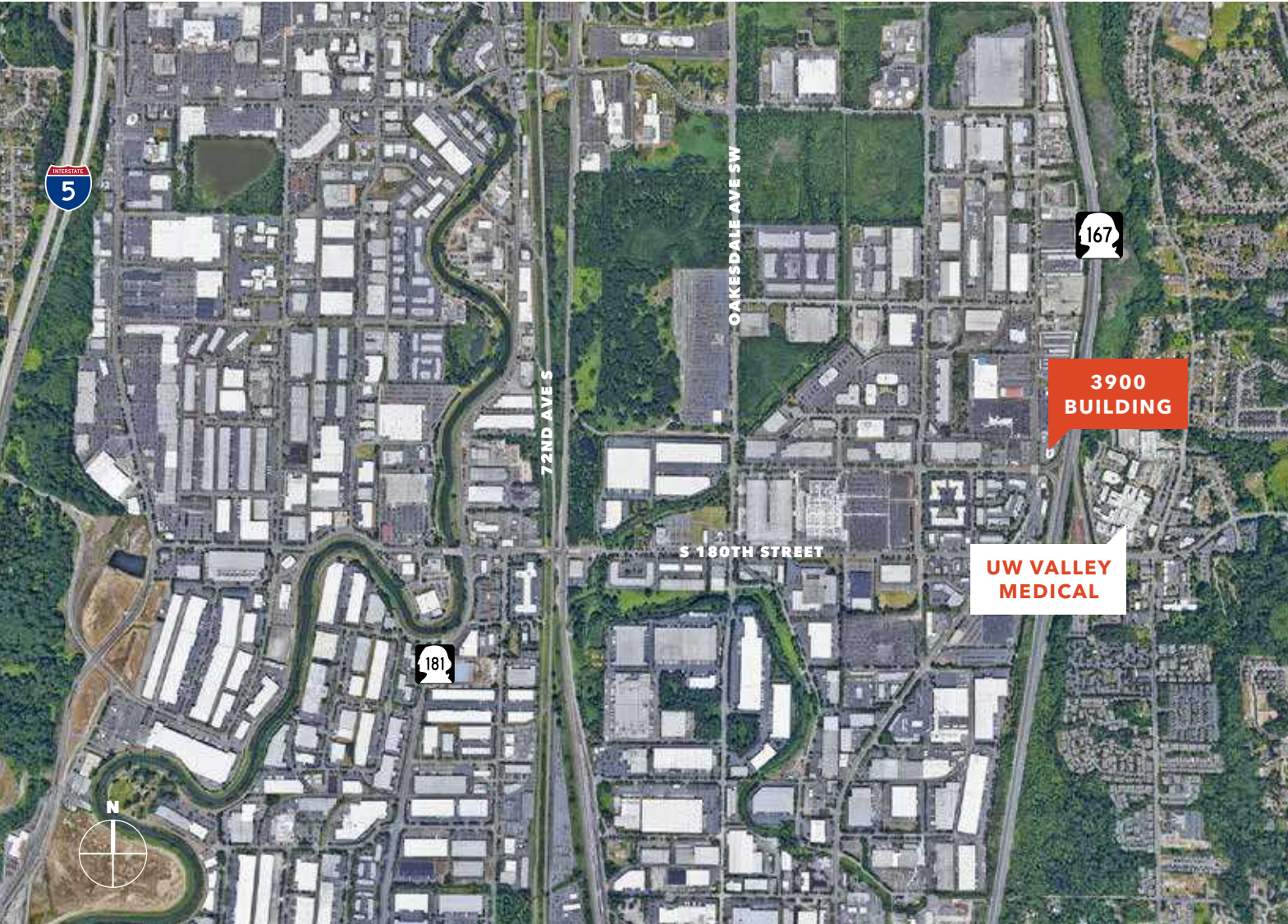
**SPENCER CLAPP**  
206.248.7427  
[spencer.clapp@kidder.com](mailto:spencer.clapp@kidder.com)

This information supplied herein is from sources we deem reliable. It is provided without any representation, warranty, or guarantee, expressed or implied as to its accuracy. Prospective Buyer or Tenant should conduct an independent investigation and verification of all matters deemed to be material, including, but not limited to, statements of income and expenses. Consult your attorney, accountant, or other professional advisor.

FOR LEASE

# 3900 Building

3900 EAST VALLEY ROAD, RENTON, WA



\$28 full  
service

**PROMINENT** location

**GREAT** access to SR-167  
and I-405

**BUILDING** and monument  
signage available

**QUALITY** office space with  
abundant parking

**95 PARKING** stalls (4.7/1,000  
SF)

**940 - 3,418 RSF** available  
immediately

**BRIAN CLAPP**  
206.248.7316  
[brian.clapp@kidder.com](mailto:brian.clapp@kidder.com)

**SPENCER CLAPP**  
206.248.7427  
[spencer.clapp@kidder.com](mailto:spencer.clapp@kidder.com)

[KIDDER.COM](http://KIDDER.COM)

This information supplied herein is from sources we deem reliable. It is provided without any representation, warranty, or guarantee, expressed or implied as to its accuracy. Prospective Buyer or Tenant should conduct an independent investigation and verification of all matters deemed to be material, including, but not limited to, statements of income and expenses. Consult your attorney, accountant, or other professional advisor.

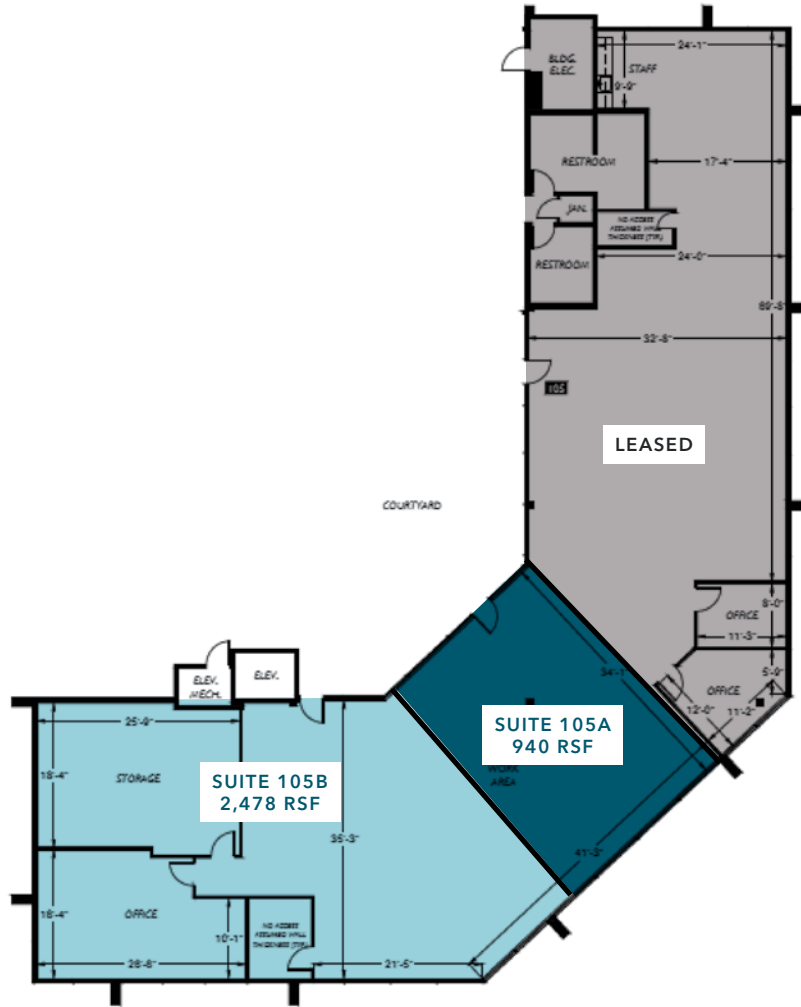
**km** Kidder  
Mathews

FOR LEASE

# 3900 Building

3900 EAST VALLEY ROAD, RENTON, WA

## Floor Plans



**3,418 RSF**

SUITES 105A & 105B COMBINED

**940 RSF**

SUITE 105A

**2,478 RSF**

SUITE 105B

**BRIAN CLAPP**

206.248.7316

[brian.clapp@kidder.com](mailto:brian.clapp@kidder.com)

**SPENCER CLAPP**

206.248.7427

[spencer.clapp@kidder.com](mailto:spencer.clapp@kidder.com)

[KIDDER.COM](http://KIDDER.COM)

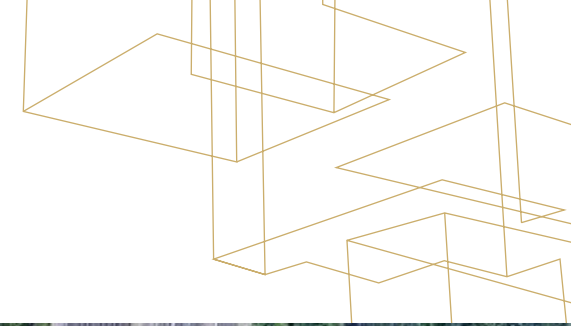
This information supplied herein is from sources we deem reliable. It is provided without any representation, warranty, or guarantee, expressed or implied as to its accuracy. Prospective Buyer or Tenant should conduct an independent investigation and verification of all matters deemed to be material, including, but not limited to, statements of income and expenses. Consult your attorney, accountant, or other professional advisor.

**km** Kidder Mathews

FOR LEASE

# 3900 Building

3900 EAST VALLEY ROAD, RENTON, WA



KIDDER.COM

This information supplied herein is from sources we deem reliable. It is provided without any representation, warranty, or guarantee, expressed or implied as to its accuracy. Prospective Buyer or Tenant should conduct an independent investigation and verification of all matters deemed to be material, including, but not limited to, statements of income and expenses. Consult your attorney, accountant, or other professional advisor.

