

FOR LEASE

975 Ross Ave,
DuPont, WA 98327

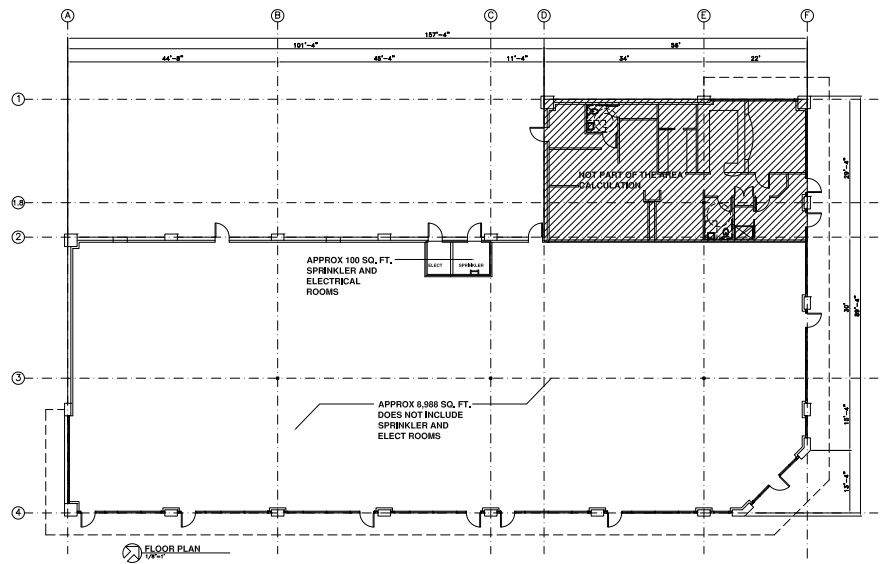


975 ROSS AVE

Don Whittles | Tim Weber | Blake Weber | Ned Whalen

First Western Properties—Tacoma Inc. | 253.472.0404
6402 Tacoma Mall Blvd, Tacoma, WA 98409 | fwp-inc.com

FLOOR PLAN



AVAILABLE:

9,413 SF \$28 PSF PLUS NNN

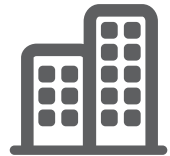
* CAN BE DEMISED



Population



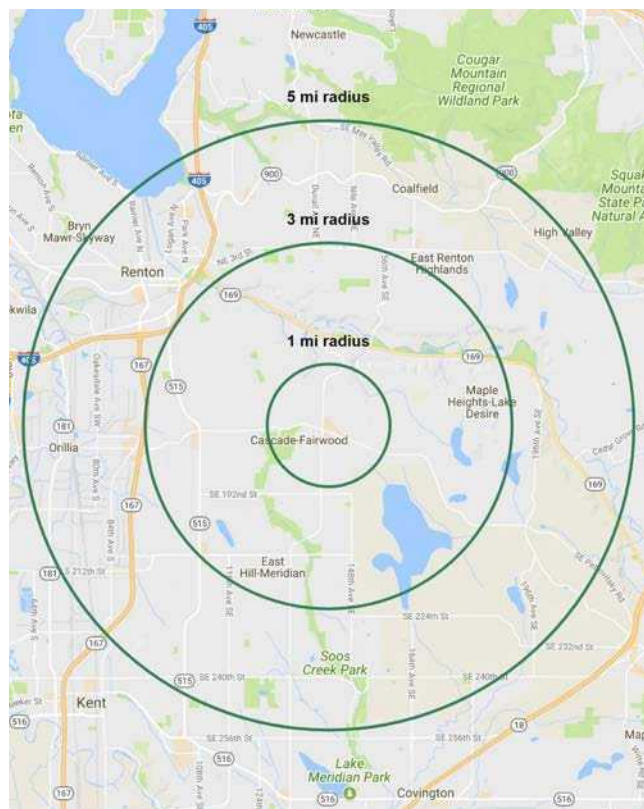
Average HH Income



Daytime Population

Regis - 2022	Population	Average HH Income	Daytime Population
Mile 1	11,000	\$85,954	65,954
Mile 3	52,000	\$95,592	85,592
Mile 5	118,957	\$108,957	108,957

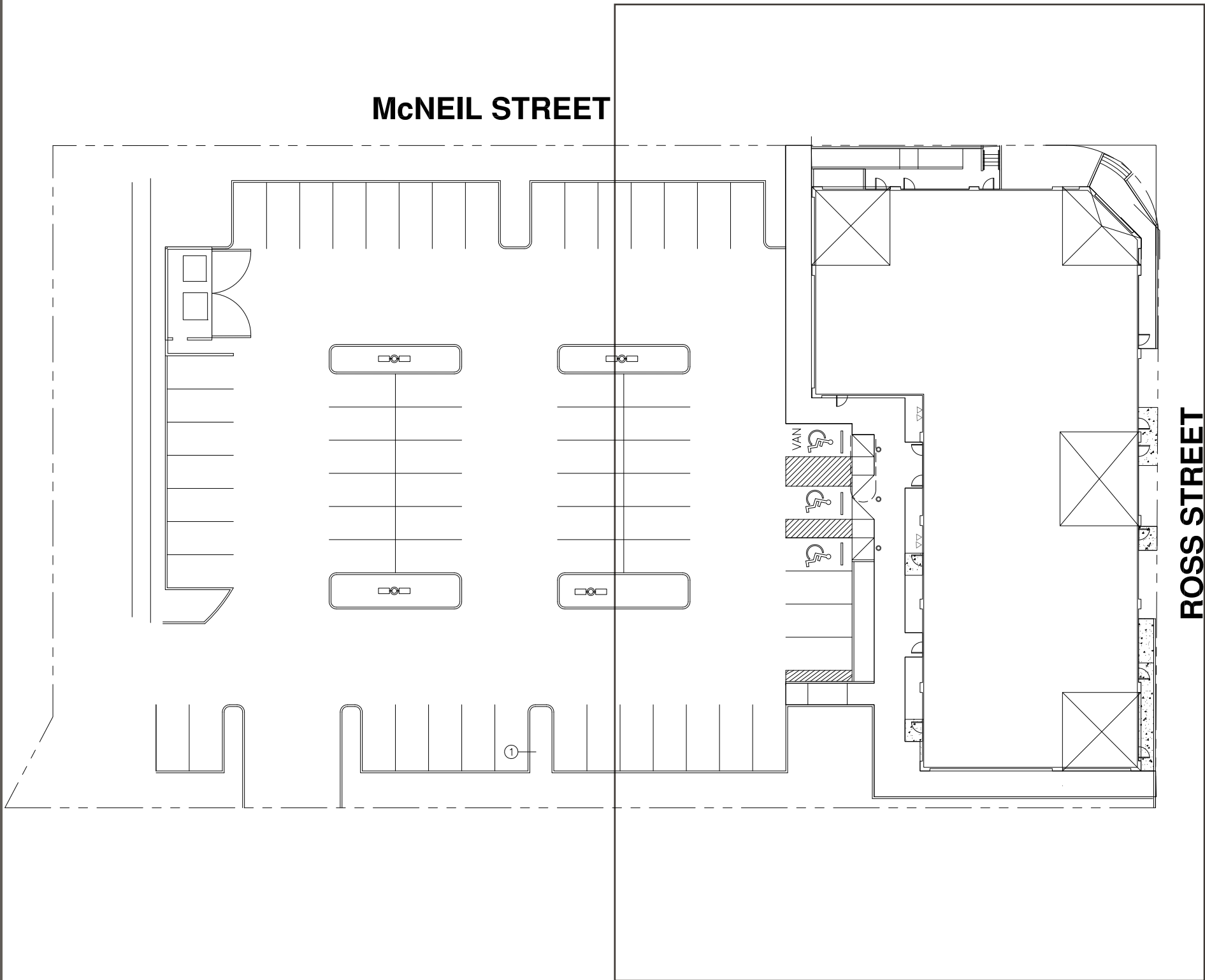
NEARBY TENANTS



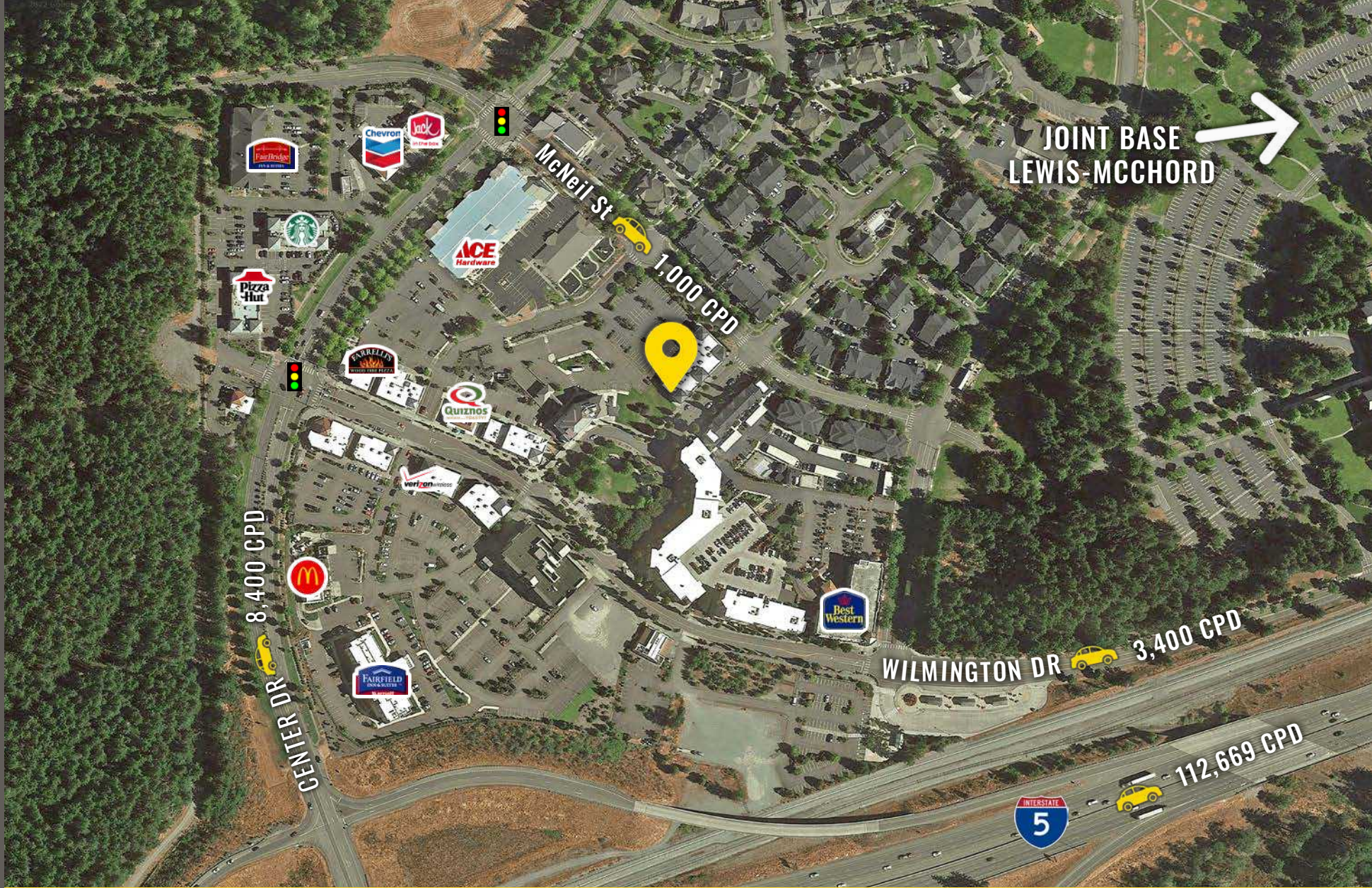
SITE PLAN

McNEIL STREET

ROSS STREET



LOCATION DETAILS



Located moments from I-5



Located near Joint Base Lewis-McChord



57,200 CPD I-5



3,400 CPD Wilmington Dr

LOCATION AERIAL



DUPONT

Joint Base Lewis-McChord has an active population of 200,000+ inhabitants, making it the 4th largest military installment worldwide.

TACOMA | KIRKLAND | PORTLAND



RELATIONSHIP FOCUSED. RESULTS DRIVEN.

DON WHITTLES

253.471.5509
dwhittles@firstwesternproperties.com

TIM WEBER

253.471.5502
tweber@firstwesternproperties.com

BLAKE WEBER

253.284.3646
bweber@firstwesternproperties.com

NED WHALEN

253.471.5503
nwhalen@firstwesternproperties.com



First Western Properties—Tacoma Inc. | 253.472.0404
6402 Tacoma Mall Blvd, Tacoma, WA 98409 | fwp-inc.com

© First Western Properties, Inc. DISCLAIMER: The above information has been secured from sources believed to be reliable, however, no representations are made to its accuracy. Prospective tenants or buyers should consult their professional advisors and conduct their own independent investigation. Properties are subject to change in price and/or availability without notice.