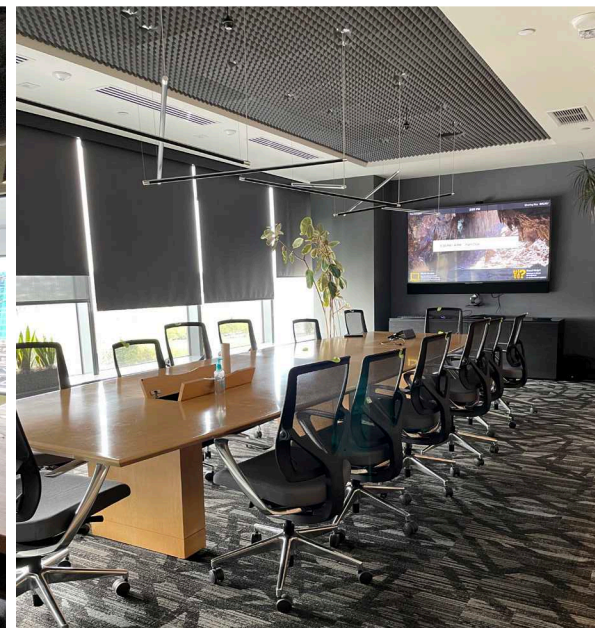
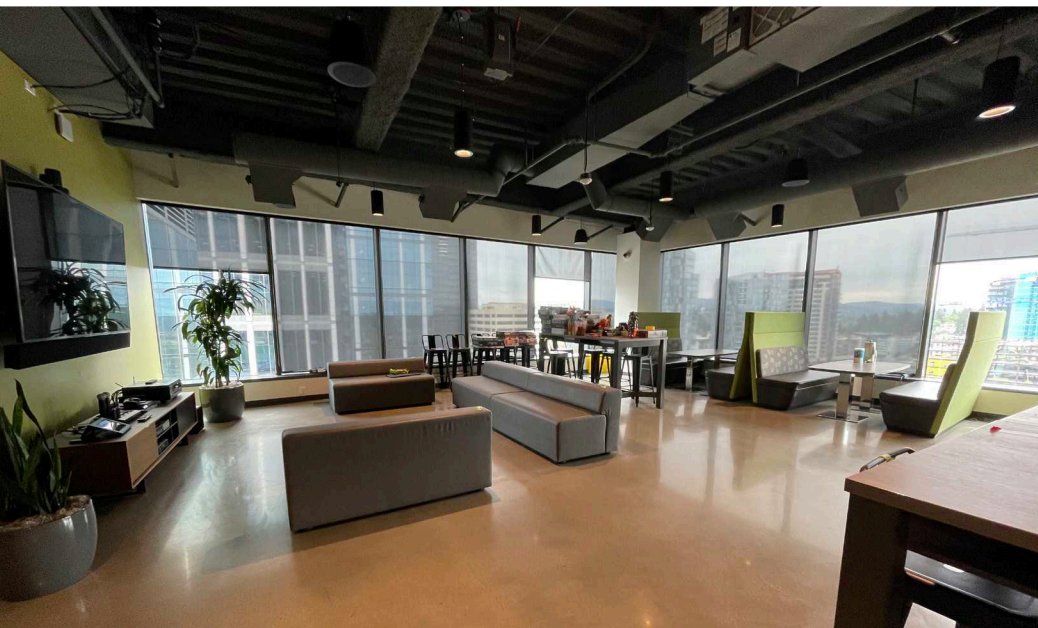


Lincoln Square South



SUBLEASE

10400 NE 4th St, Bellevue, WA



SUBLEASE

24,865 RSF | Suite 800



Sublease highlights

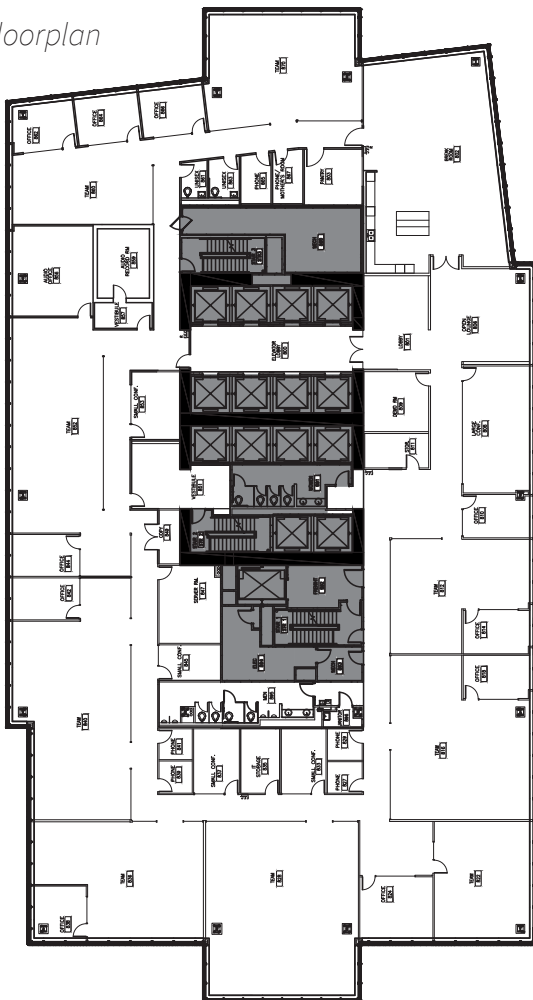
- + Sublease expires February 28, 2025
- + Full floor tech build-out and finishes
- + Open ceilings, collaboration space, lounge, cubicle areas, conference and board rooms
- + Call broker for rates



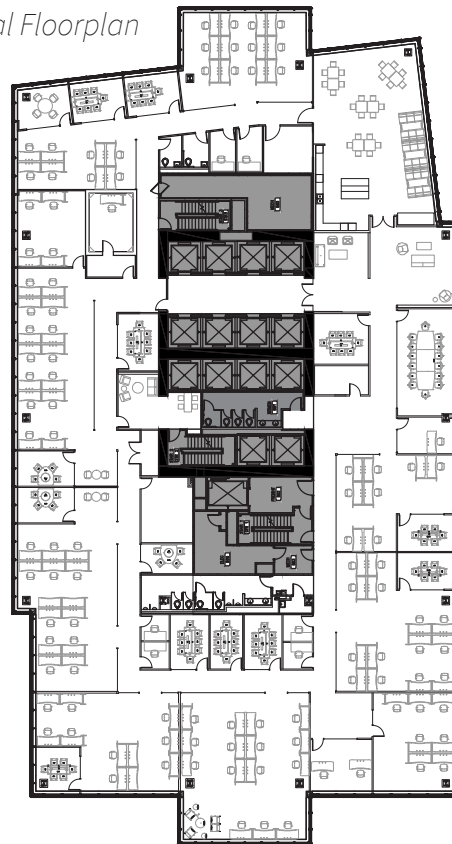
Building snapshot

- + Immediate access to over 50 restaurants, plus 30 quick service food and cafe spots and 1.7 million square feet of retail in Lincoln and Bellevue Square
- + Garage parking 2.00 / 1,000 RSF at \$232.76/stall/month
- + Connects to W Bellevue, The Westin Bellevue and Hyatt Regency Bellevue
- + Easy access to I-405, I-90, and SR-520 and near future light rail station
- + Common areas include rooftop garden, collaboration center, library with fireplace, lounge/lobby area
- + Entertainment amenities include 2 movie theatres, bowling alley, Forum Social House, and Top Golf
- + Secured cycle center, with showers & lockers and repair tools.
- + On-site state of the art fitness center

As Is Floorplan



Conceptual Floorplan



Chris Hughes
Managing Director
+1 425 974 4087
Chris.Hughes@am.jll.com

Charlie Malley
Managing Director
+1 425 974 4088
Charlie.Malley@am.jll.com

Sam Dommer
Associate Broker
+1 425 974 4012
Sam.Dommer@am.jll.com

SUBLEASE

24,865 RSF | Suite 800

