



For Lease

Jared Zebe
208 709 7311
jared.zebe@colliers.com

Mike Zebe
208 705 6453
mike.zebe@colliers.com

Don Zebe
208 403 1973
don.zebe@colliers.com

2043 E Center Street
Pocatello, Idaho 83201
208 951 2100
colliers.com/idaho

City Center | Medical Office Building

1001 N 7th Avenue, Pocatello, ID

Highlights:

- Class A medical office space
- Centrally located
- Build out as desired
- Full time janitorial and facility management on site
- 24/7 security monitored
- Common training facility
- Call agent for tour

This document has been prepared by Colliers for advertising and general information only. Colliers makes no guarantees, representations or warranties of any kind, expressed or implied, regarding the information including, but not limited to, warranties of content, accuracy and reliability. Any interested party should undertake their own inquiries as to the accuracy of the information. Colliers excludes unequivocally all inferred or implied terms, conditions and warranties arising out of this document and excludes all liability for loss and damages arising there from. This publication is the copyrighted property of Colliers and /or its licensor(s). © 2023. All rights reserved. This communication is not intended to cause or induce breach of an existing listing agreement. Colliers Portneuf Valley, LLC.

For Lease

Property Information

Property Type Medical Office

Land Size 3 Acres

Building Size 50,000 SF

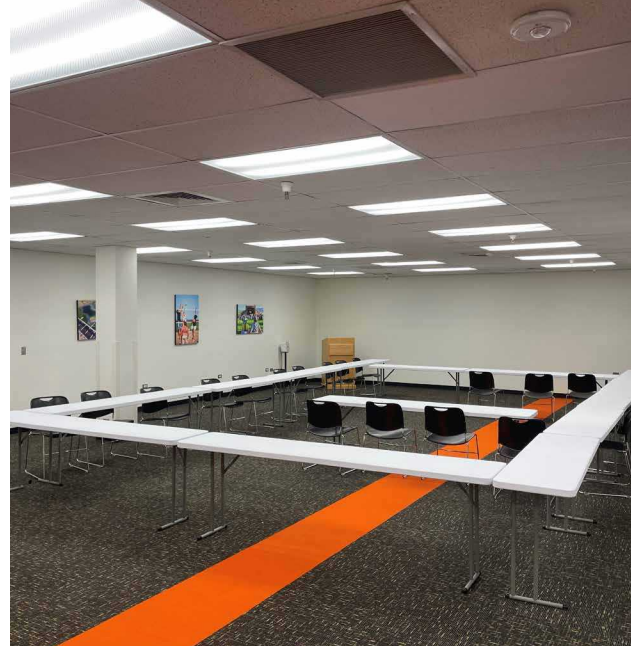
Parking Ample

Lease Type Modified Gross

Lease Rate Call agent

Demos

	1 Miles	3 Miles	5 Miles
Population	12,498	48,513	75,164
Households	5,572	19,124	28,338
Avg. Income	\$53,679	\$66,241	\$73,550



For Lease

Space Available

Suite	Size	Rate
103	2,145 SF	Call agent
201	865 SF	Call agent
215	1,656 SF	Call agent

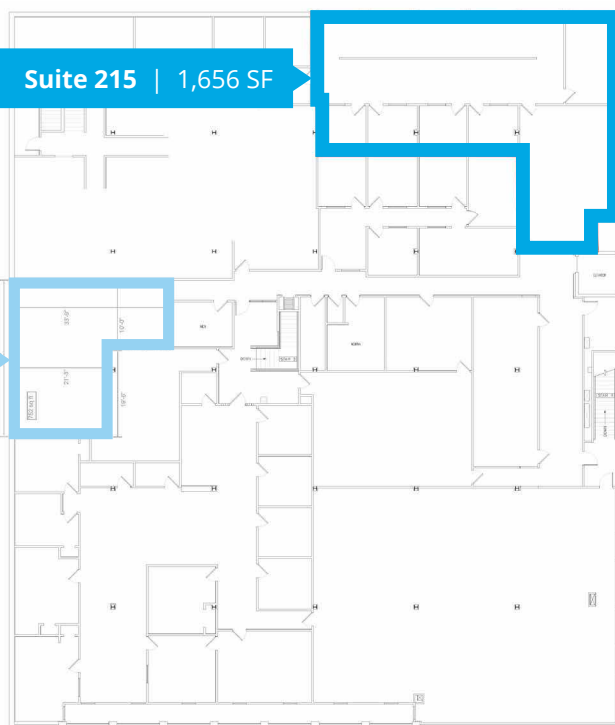
1st Floor



Suite 201 | 865 SF

Suite 215 | 1,656 SF

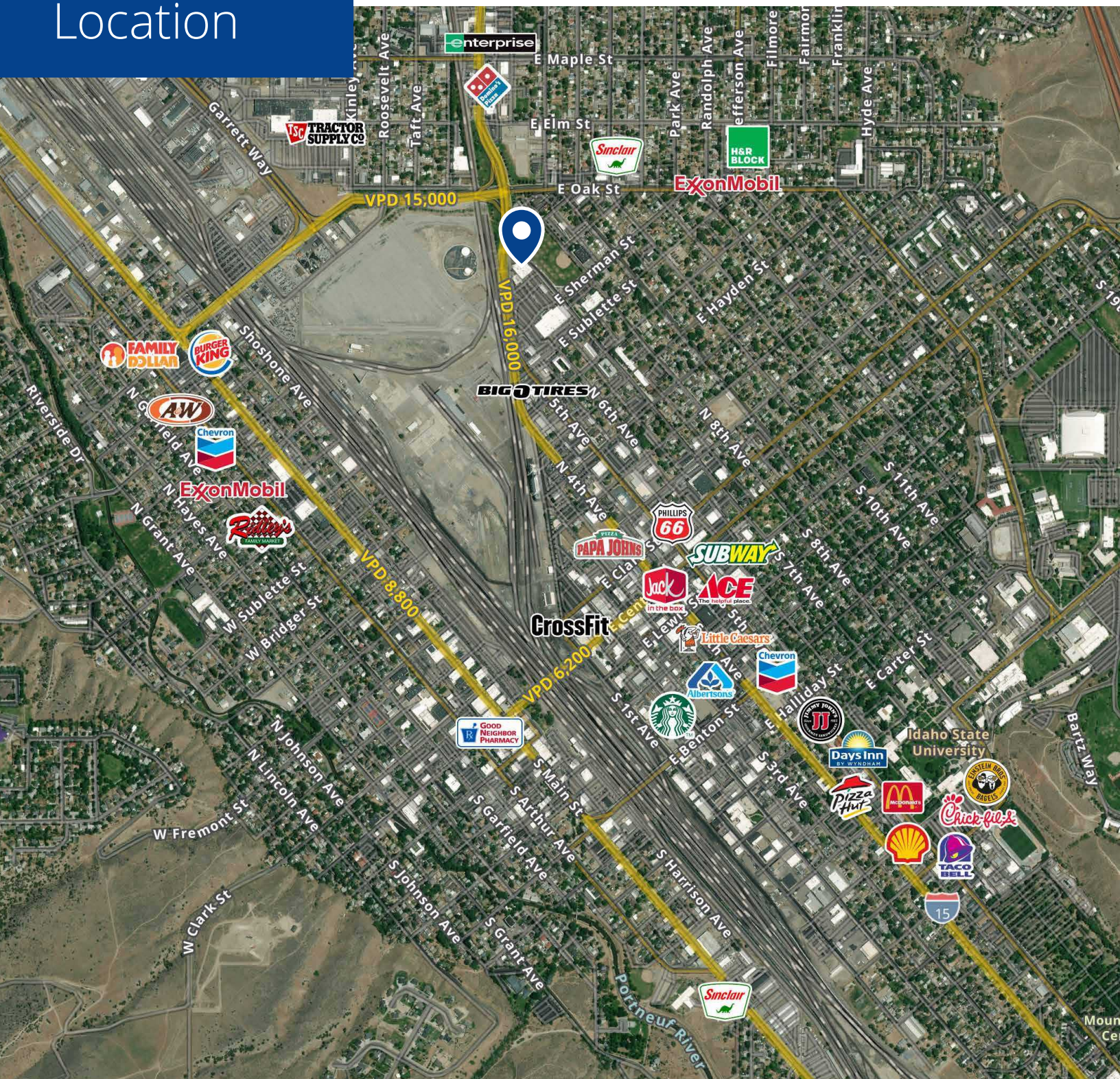
2nd Floor



Location

 [Google Map](#)

 [Street View](#)



2043 E Center Street
Pocatello, Idaho 83201
208 951 2100
colliers.com/idaho