

COMMERCIAL SPACE FOR LEASE

NORTHWEST CORPORATE PARK

7901 SKANSIE AVE GIG HARBOR WA, 98335



Harbor Realty Advisors...
...your commercial real estate edge.

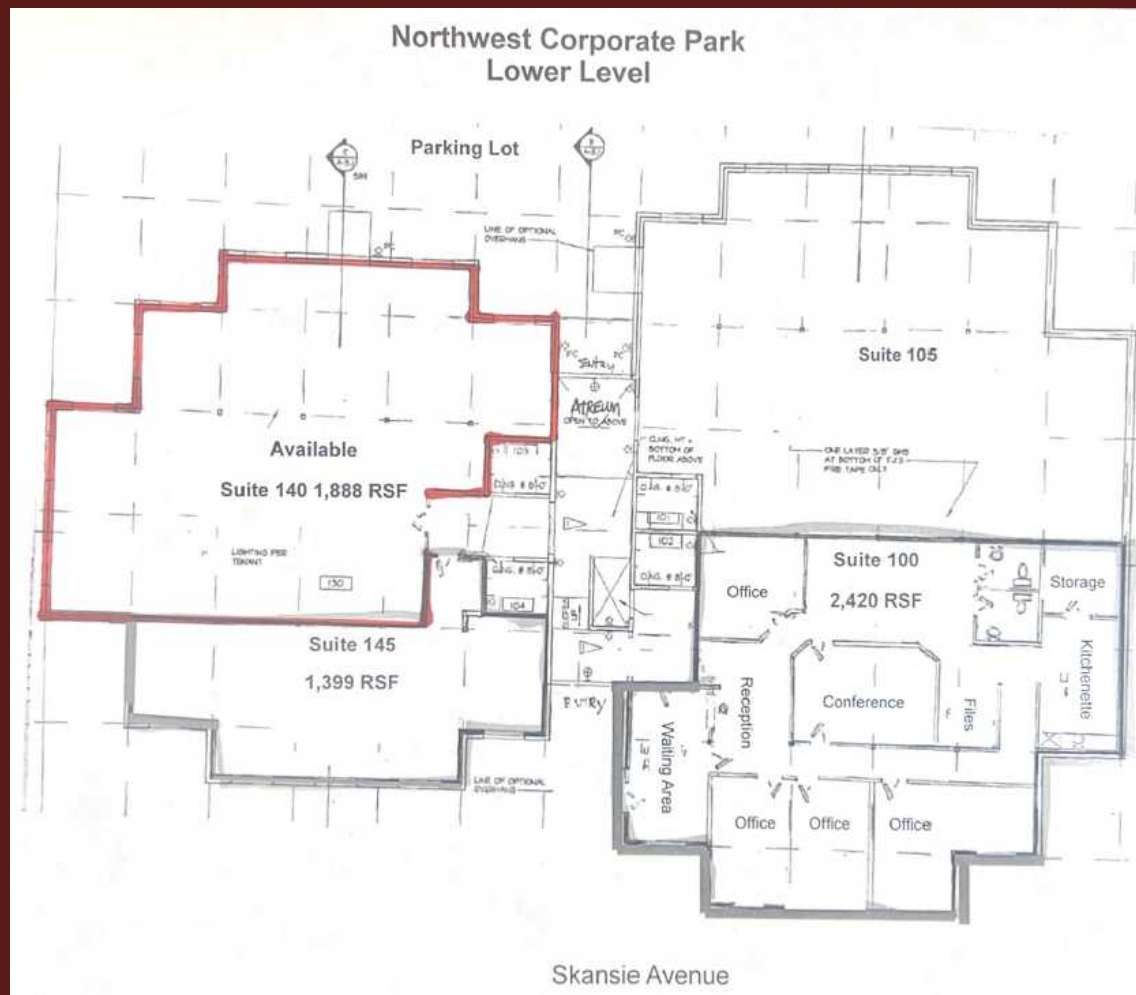
7901
NORTHWEST CORPORATE PARK

- NORTHWEST INSURANCE SERVICES INC.
- ENVOY MORTGAGE
- HARTFORD BOND
- NANCY E. BOYDEN, ARNP
- AROUND THE SOUND BOOKKEEPING
- LAW OFFICE OF MARK D. NELSON, PLLC
- LAW OFFICE OF KENLYNN A. GALLINGER, PLLC
- ROSEDALE DENTAL
- UNITED REAL ESTATE - Puget Sound West
- THE HIMMER CENTER
- BAY EQUITY HOME LOANS

- SUITE 140
- 1,888 RSF

FOR LEASE

- AVAILABLE IMMEDIATELY
- MAIN FLOOR PROFESSIONAL OFFICE
- EASY ACCESS TO HWY 16 & UPTOWN GIG HARBOR



FOR MORE INFORMATION CALL

GARY GALLINGER
253.988.3367

GARY@HARBORRA.COM

FISCHER GALLINGER
253.330.1318

FISCHER@HARBORRA.COM