
5519 Hovander Rd.

\$12/SqFt



BELLWETHER
— Commercial —

11 Bellwetherway Suit 201,
Bellingham WA, 98225

Mike Parry

Jeremiah Rice

360.201.6697
Bellingham4sale@gmail.com

360.820.1017
Jeremiah@bwrealestate.com

This Industrial flex space is thoughtfully designed with a focus on versatility. The 5,846 SqFt space comprises two spacious open areas, allowing for various potential uses. It offers large restrooms equipped with showers and locker rooms, ensuring convenience for users and the reception area with an office adds a professional touch. Notably, it features a 10x10 grade level door and ample parking, making it an incredibly flexible site with numerous possibilities.

Total Available Space:

Lease Type:

Rent Rate:

5846 SqFt

NNN

\$12/SqFt

Expenses:

Heated:

Sprinklers:

\$0.18

Yes

Yes

Information contained herein has been obtained from sources deemed reliable, but not guaranteed. Buyer to verify



BELLWETHER
— Commercial —

11 Bellwetherway Suit 201,
Bellingham WA, 98225

Mike Parry

Jeremiah Rice

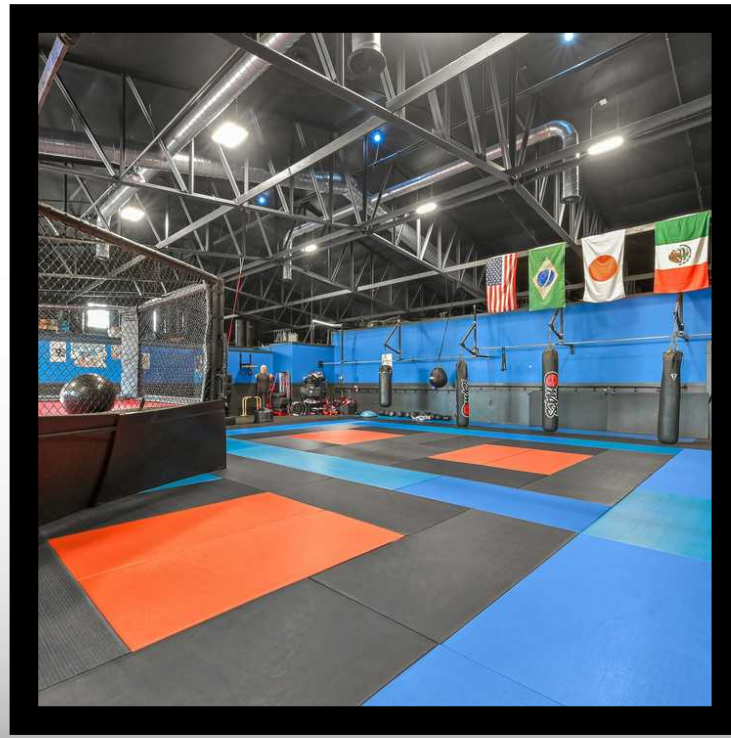
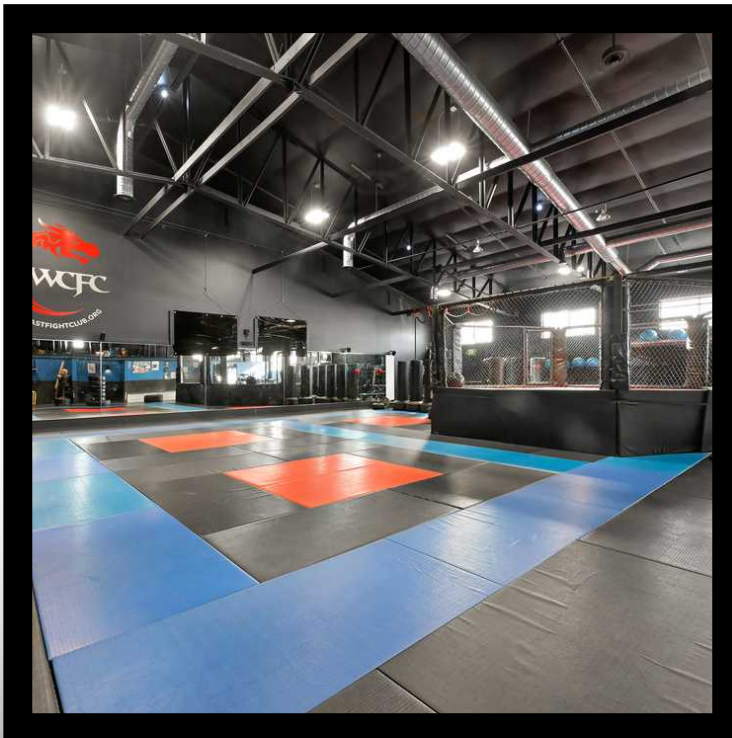
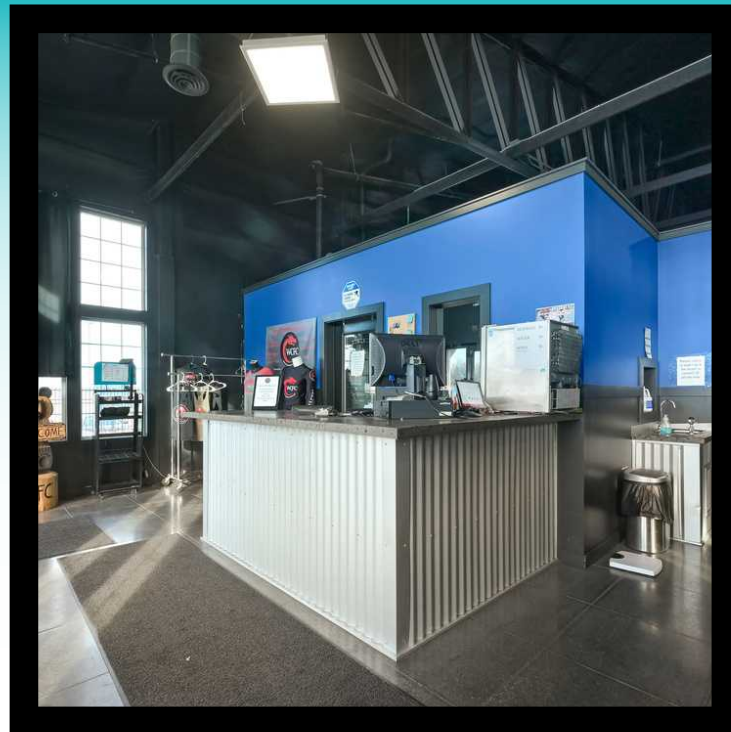
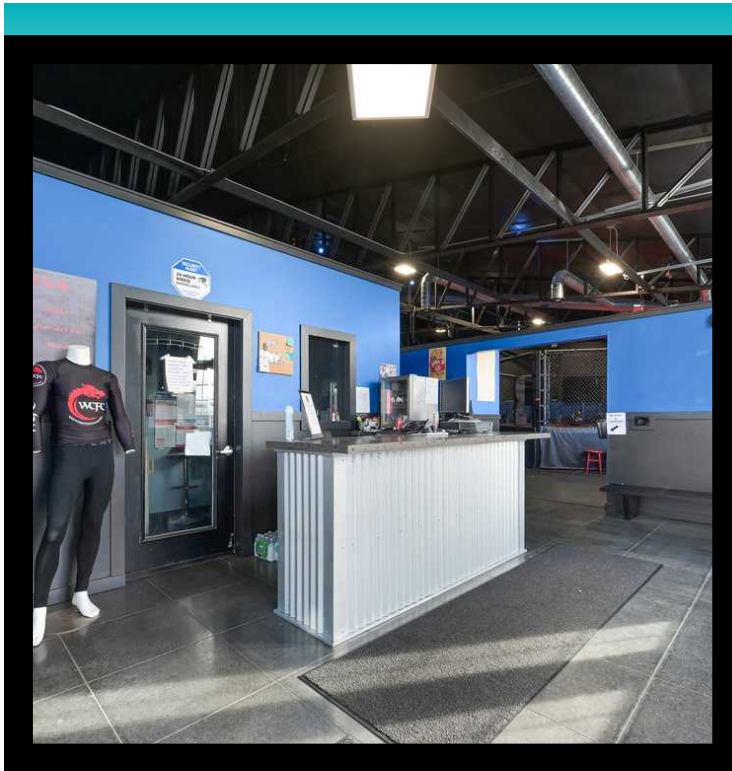
360.201.6697

Bellingham4sale@gmail.com

360.820.1017

Jeremiah@bwrealestate.com

Pictures



Information contained herein has been obtained from sources deemed reliable, but not guaranteed. Buyer to verify



BELLWETHER
— Commercial —

11 Bellwetherway Suit 201,
Bellingham WA, 98225

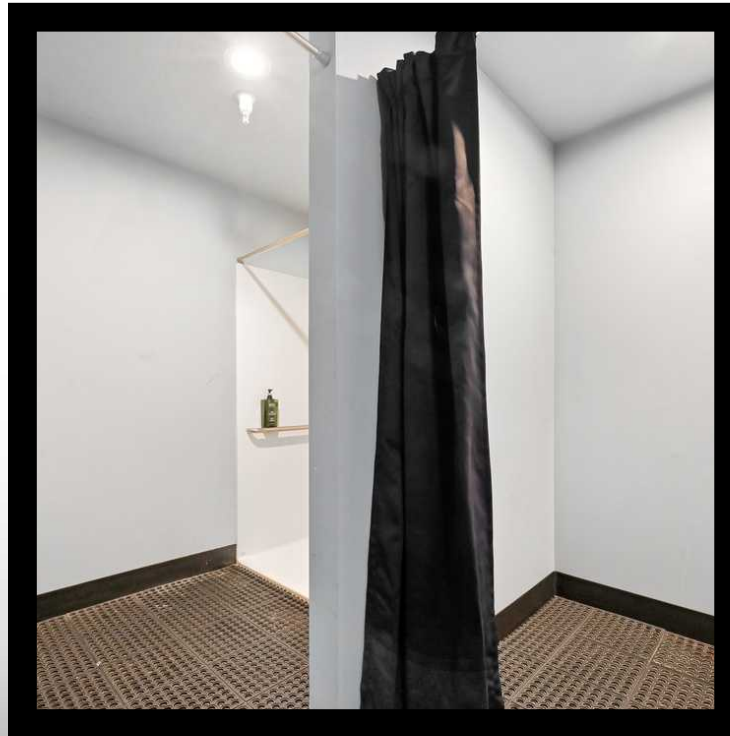
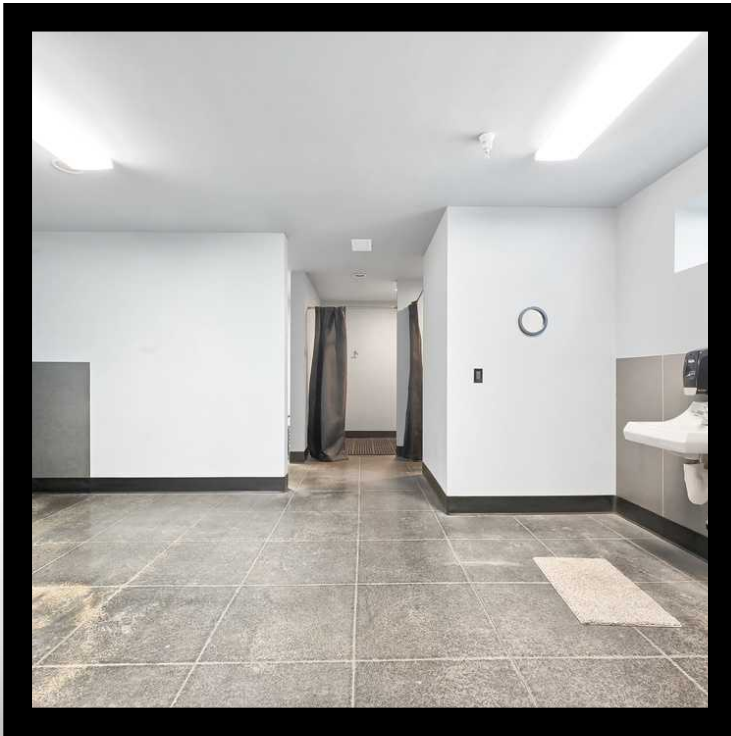
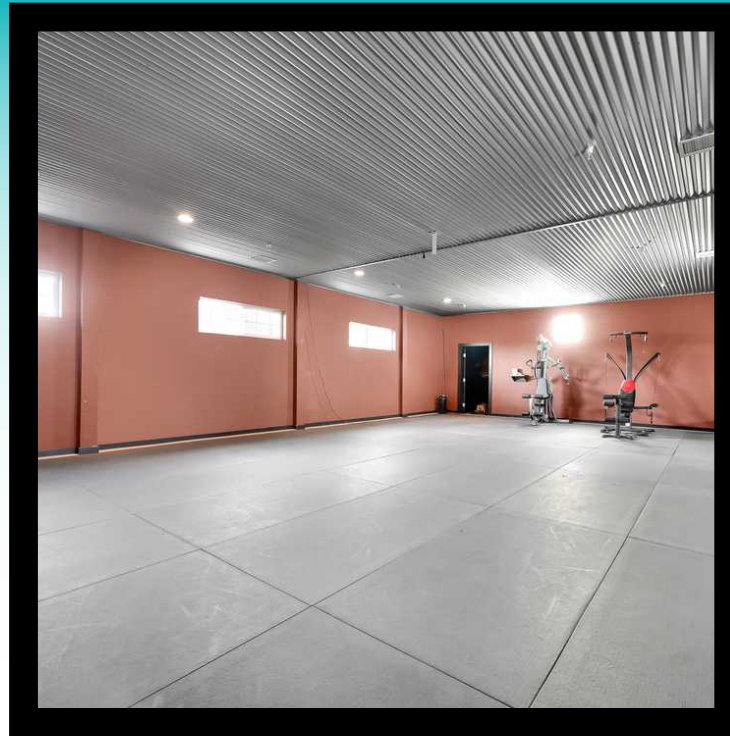
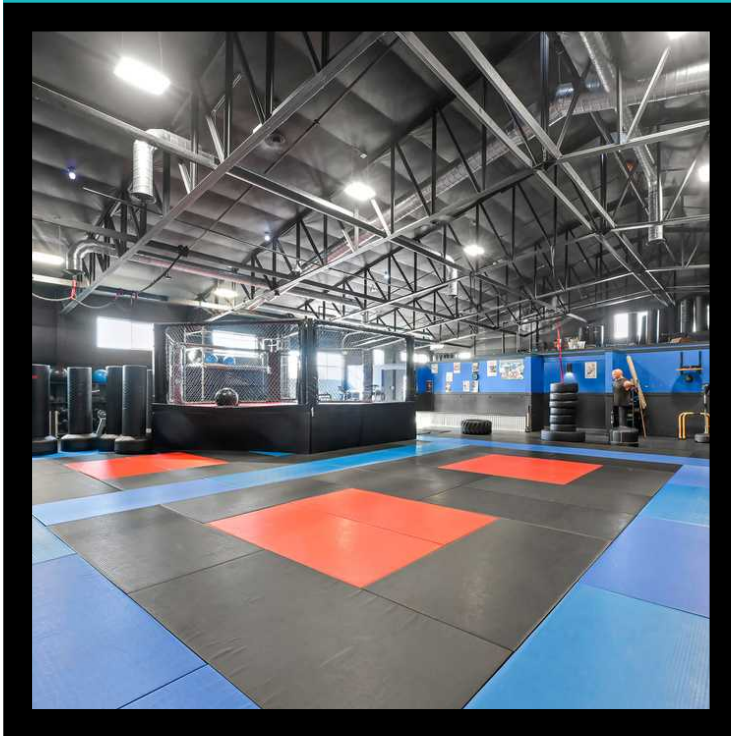
Mike Parry

Jeremiah Rice

360.201.6697
Bellingham4sale@gmail.com

360.820.1017
Jeremiah@bwrealestate.com

Pictures



Information contained herein has been obtained from sources deemed reliable, but not guaranteed. Buyer to verify



BELLWETHER
— Commercial —

Mike Parry

Jeremiah Rice

360.201.6697
Bellingham4sale@gmail.com

360.820.1017
Jeremiah@bwrealestate.com