

Office for Lease 711 BUILDING

711 6th Avenue N, Seattle, WA 98109



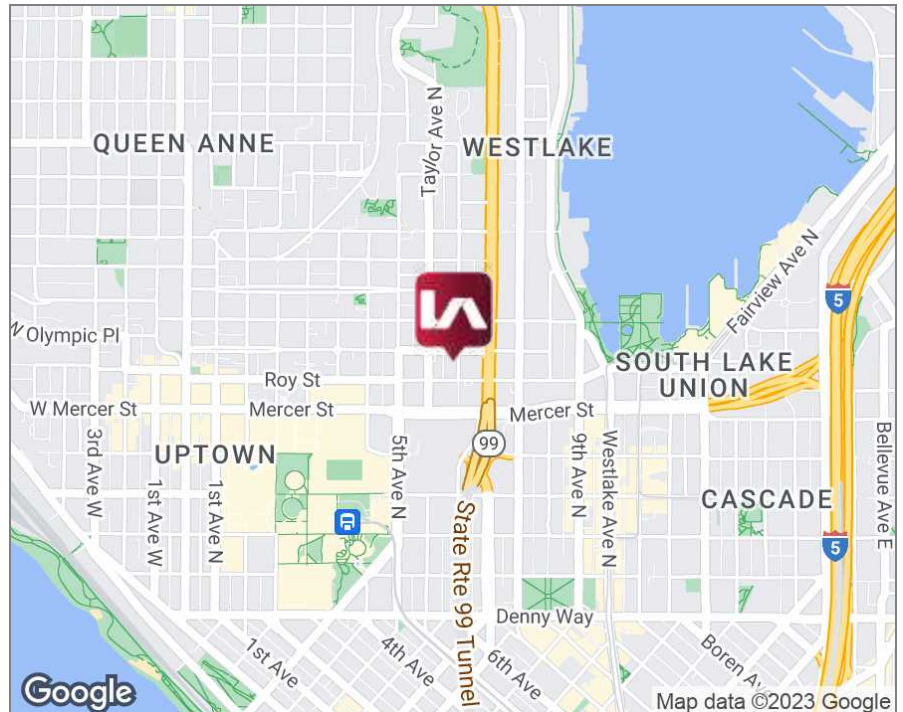
LISTING INFORMATION

AVAILABLE SF:	2,555 - 5,057 SF
ASKING RENT:	\$21.00/SF/Yr (NNN)
ESTIMATED NNN RATE:	\$14.83/SF/Yr
ZONING:	SM-UP 65 (M)
AVAILABLE:	Immediately

COMMENTS

Located one block west of WA-99 and two blocks north of Mercer Street at the edge of Lower Queen Anne and South Lake Union.

- Full floor opportunity for 5,507 SF
- Walking distance to the Seattle Center, QFC, Starbucks, and the Bill & Melinda Gates Foundation
- Well maintained office building; renovated in 2016



CONTACT

Carson Scott

cscott@lee-associates.com
D 425.818.1538

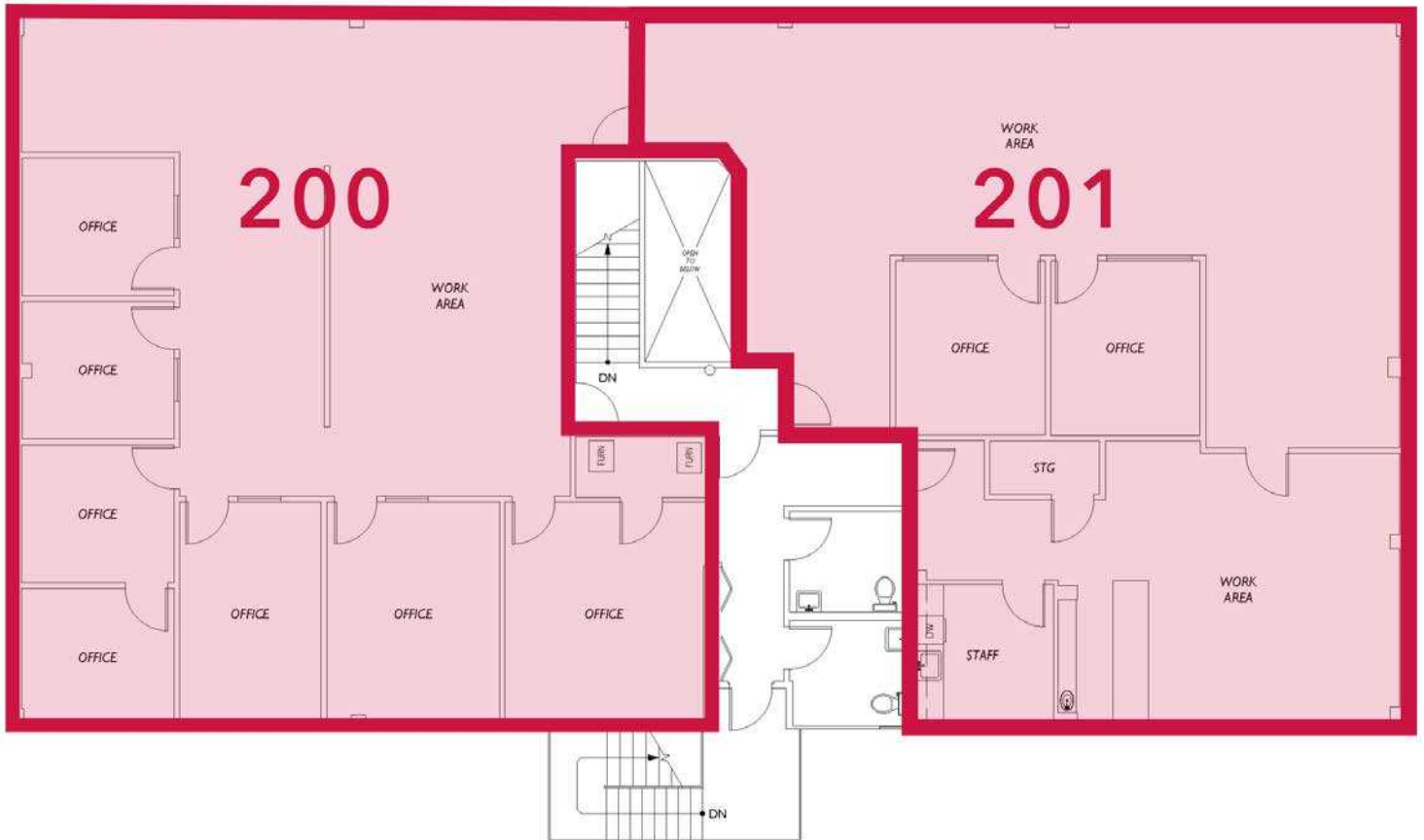
Jim Reed, SIOR

jreed@lee-associates.com
D 206.210.5202

We obtained the information above from sources we believe to be reliable. However, we have not verified its accuracy and make no guarantee, warranty or representation about it. It is submitted subject to the possibility of errors, omissions, change of price, rental or other conditions, prior sale, lease or financing, or withdrawal without notice. We include projections, opinions, assumptions or estimates for example only, and they may not represent current or future performance of the property. You and your tax and legal advisors should conduct your own investigation of the property and transaction.

Office for Lease 711 BUILDING

711 6th Avenue N, Seattle, WA 98109



AVAILABLE SPACES

SUITE	SIZE (SF)	LEASE TYPE	LEASE RATE	DESCRIPTION
200	2,555 - 5,057 SF	NNN	\$21.00 SF/yr	Full Floor opportunity, Can be combined with Suite 201 for 5,057 SF
201	2,502 - 5,057 SF	NNN	\$21.00 SF/yr	Full Floor opportunity, Can be combined with Suite 200 for 5,057 SF

CONTACT

Carson Scott

cscott@lee-associates.com
D 425.818.1538

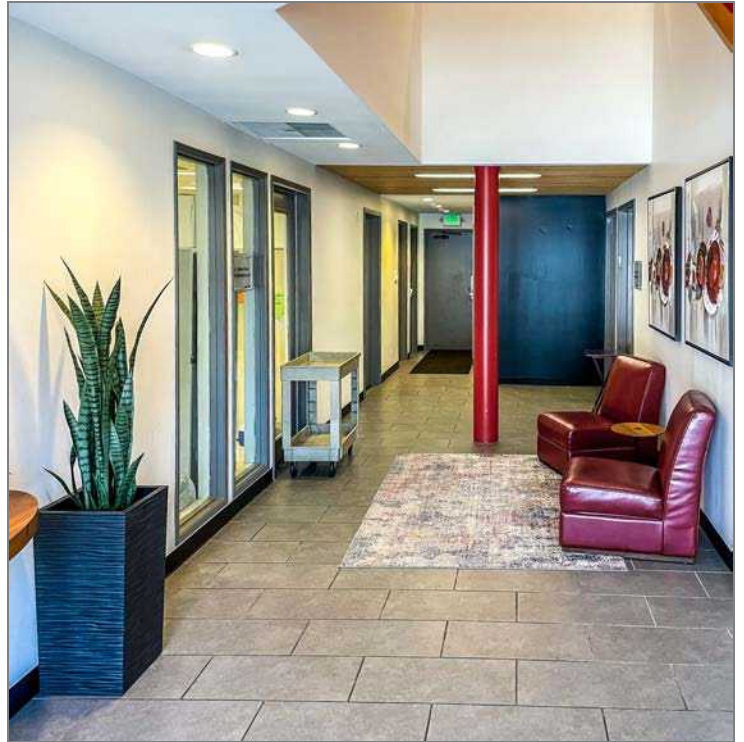
Jim Reed, SIOR

jreed@lee-associates.com
D 206.210.5202

We obtained the information above from sources we believe to be reliable. However, we have not verified its accuracy and make no guarantee, warranty or representation about it. It is submitted subject to the possibility of errors, omissions, change of price, rental or other conditions, prior sale, lease or financing, or withdrawal without notice. We include projections, opinions, assumptions or estimates for example only, and they may not represent current or future performance of the property. You and your tax and legal advisors should conduct your own investigation of the property and transaction.

Office for Lease 711 BUILDING

711 6th Avenue N, Seattle, WA 98109



CONTACT

Carson Scott

cscott@lee-associates.com

D 425.818.1538

Jim Reed, SIOR

jreed@lee-associates.com

D 206.210.5202

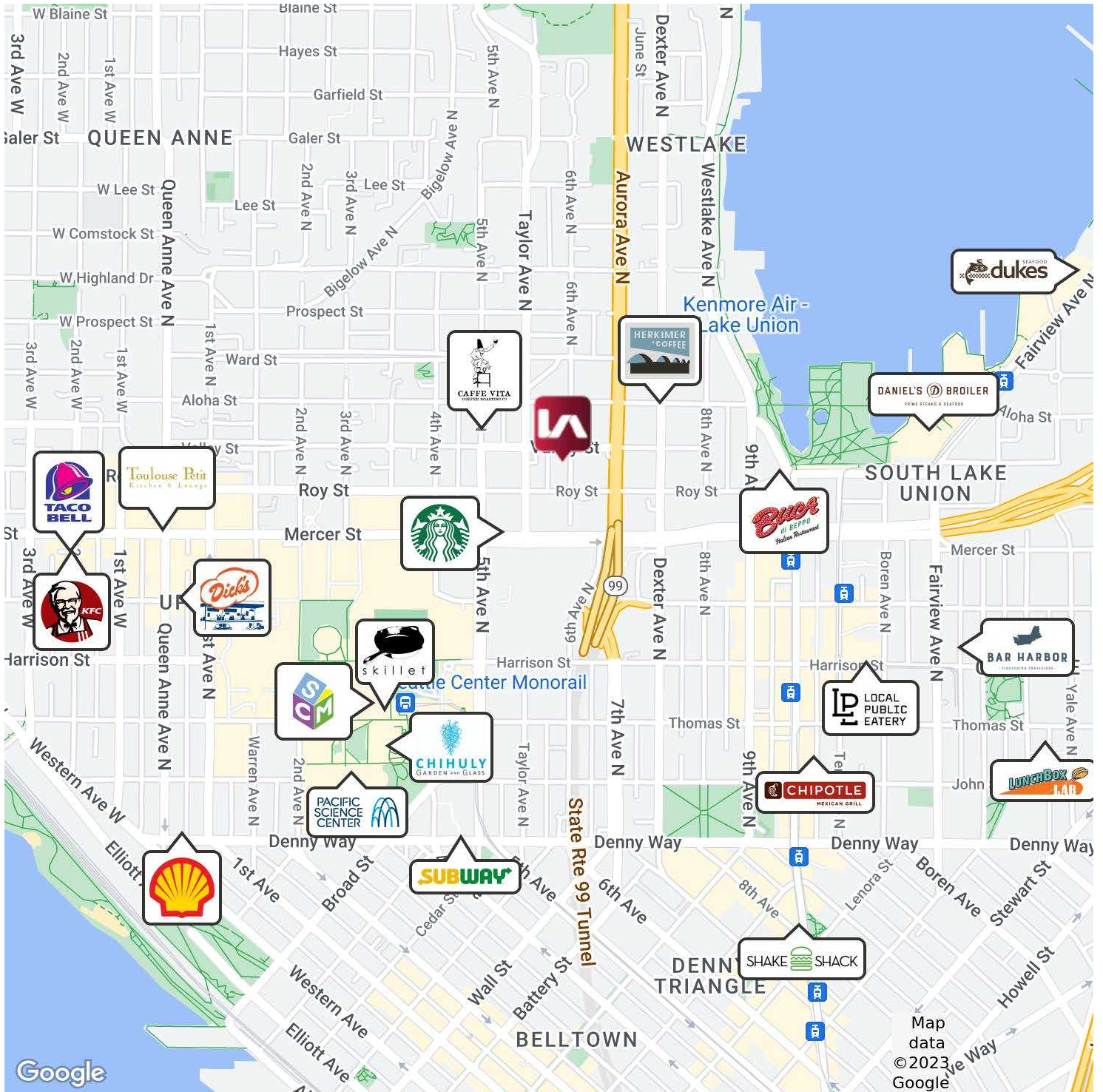
We obtained the information above from sources we believe to be reliable. However, we have not verified its accuracy and make no guarantee, warranty or representation about it. It is submitted subject to the possibility of errors, omissions, change of price, rental or other conditions, prior sale, lease or financing, or withdrawal without notice. We include projections, opinions, assumptions or estimates for example only, and they may not represent current or future performance of the property. You and your tax and legal advisors should conduct your own investigation of the property and transaction.

Office for Lease 711 BUILDING

711 6th Avenue N, Seattle, WA 98109



COMMERCIAL REAL ESTATE SERVICES



CONTACT

Carson Scott

cscott@lee-associates.com

D 425.818.1538

Jim Reed, SIOR

jreed@lee-associates.com

D 206.210.5202

We obtained the information above from sources we believe to be reliable. However, we have not verified its accuracy and make no guarantee, warranty or representation about it. It is submitted subject to the possibility of errors, omissions, change of price, rental or other conditions, prior sale, lease or financing, or withdrawal without notice. We include projections, opinions, assumptions or estimates for example only, and they may not represent current or future performance of the property. You and your tax and legal advisors should conduct your own investigation of the property and transaction.