



2119 Lincoln St, Unit A
Bellingham, WA 98225



For Lease

Bellingham Commercial Space

.....



Exclusively Offered by

Wendy Pedersen
VP Sales and Acquisitions
425.232.4266
wendy@cascadecommercialre.com

The Offering

Cascade Commercial Real Estate is pleased to offer this commercial space for lease located in Bellingham, WA.

Summary

| | | | |
|------------------|---|------------------------|-----------------------|
| Address: | 2119 Lincoln St Bellingham, WA 98225 | Zoning: | LI – Light Industrial |
| Available Space: | Unit A | Rental Rate: | \$1.15/SF/Month |
| Square Feet: | 2,864 | NNN: (Approximate) | \$.12/SF/Month |
| Lease Type: | NNN | Rental Rate + NNN = | \$3,637.28/Month |



Property Description

2,864 sq ft commercial space available for lease in Bellingham.

Featuring 16 ft ceilings in the warehouse area, 14 ft grade-level automatic roll-up door, 200-amp power, heated warehouse area, A/C, on-site and easy street parking, mezzanine level, and a convenient kitchen area. Use of a highly visible sign located directly adjacent to I-5 that is seen when driving both directions. Perfect for manufacturing, retail, office, restaurant, business services, marijuana production, and more. Located just minutes away from I-5 and the downtown area.

Schedule a tour today!



Bellingham
Commercial
Space

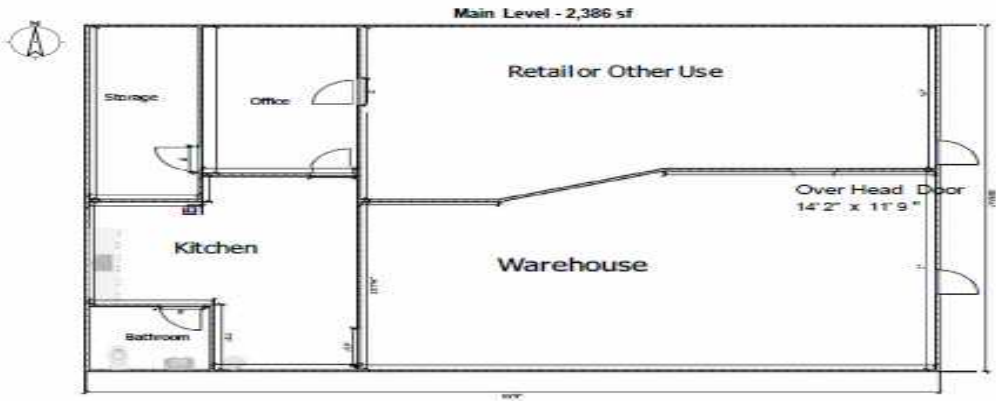
Property Photos



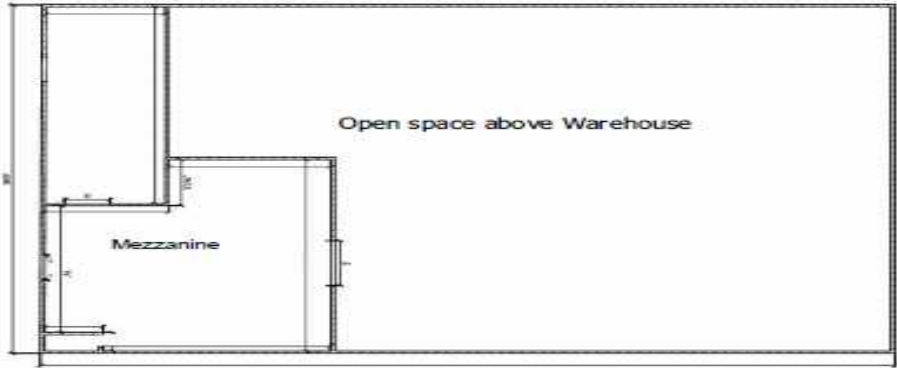
Floor Plan



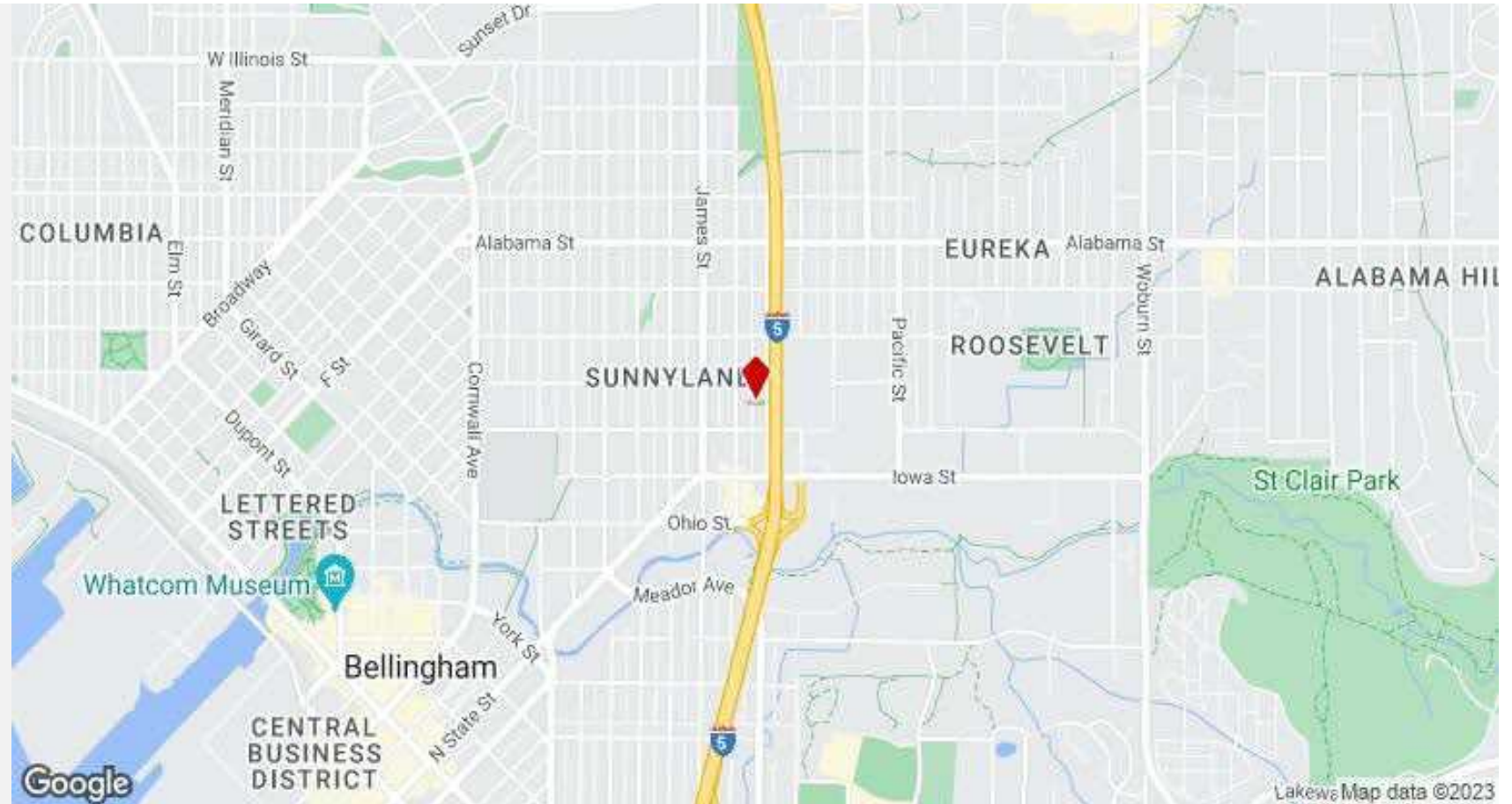
2119 Lincoln St, Bellingham, WA 98225
Unit A - 2,864 SF Total



Mezzanine Level - 478 sf



*** Measurements are approximate. For conceptual purposes only.



Wendy Pedersen
VP Sales and Acquisitions
425.232.4266
wendy@cascadecommercialre.com