

CORNERSTONE PLAZA FOR LEASE



NEIL WALTER
COMPANY

BRUCE VALENTINE

253.606.4830

bvalentine@neilwalter.com

PROPERTY OVERVIEW

1148 Broadway is a premier commercial property located in the heart of downtown Tacoma, WA and is comprised of 100,000 SF. With its prime location, this 4-story building offers tenants breathtaking views of the city and easy access to a variety of local amenities, including restaurants, shops, and entertainment venues. Built in 1910, the building has been meticulously maintained and renovated to offer modern office spaces that feature high ceilings, large windows, and an abundance of natural light. The property also includes a dedicated parking lot, making it convenient for both tenants and their clients. With its classic charm and modern updates, 1148 Broadway is a highly desirable commercial property that offers businesses the perfect combination of style and functionality.



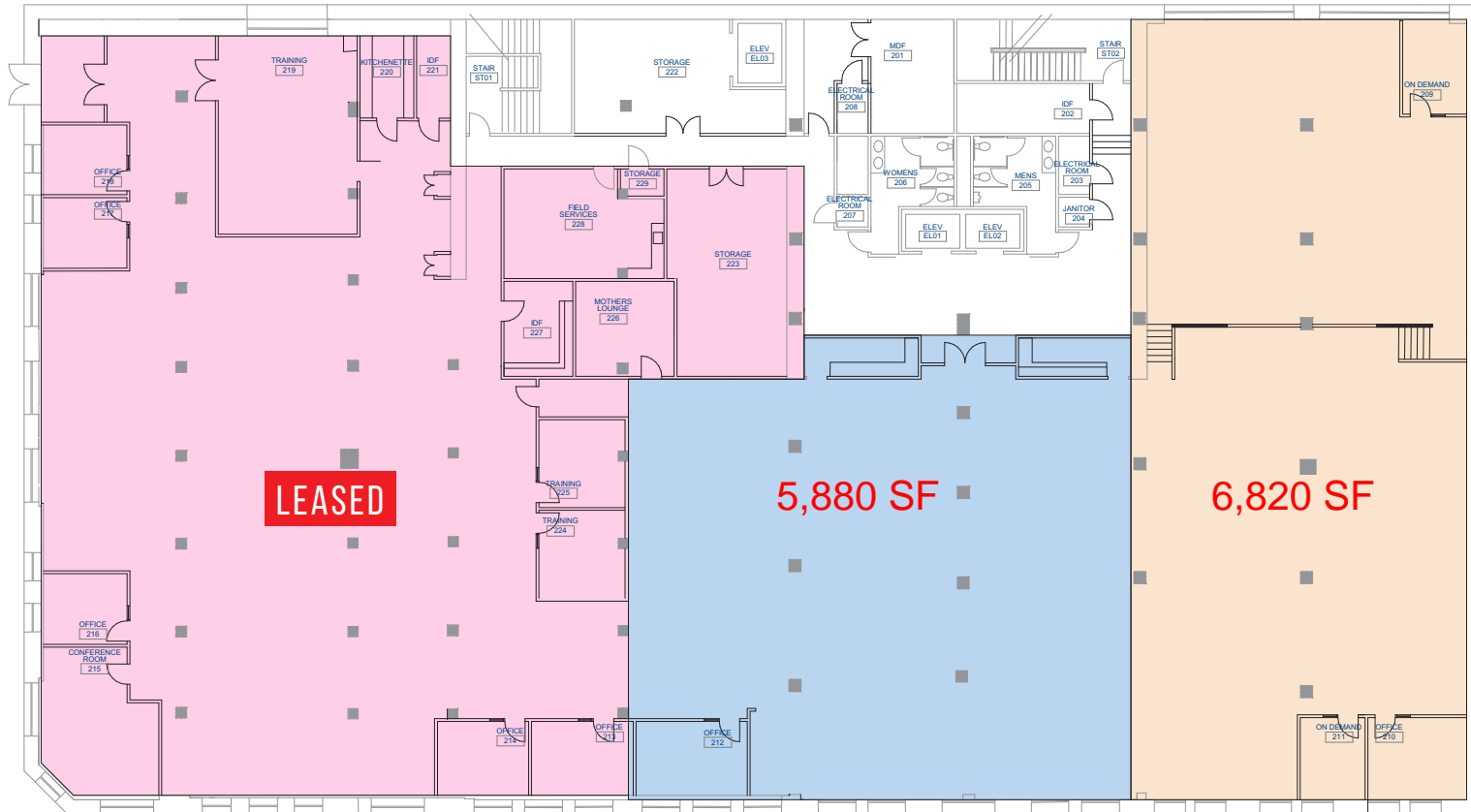
6,000 SF to 65,000 SF Available | Floors 2,3, & 4 are Demisable

PROPERTY FEATURES

- Prime downtown Tacoma location with stunning city views
- Close to shops, restaurants, and entertainment venues
- Modern office spaces with high ceilings and large windows
- Meticulously maintained and renovated
- Dedicated parking lot for tenants and clients
- Highly desirable commercial property offering style and functionality
- Covered parking available with direct lobby access
- Walking distance to the summer Tacoma Farmers Market
- Floor plates which can accommodate up to 25,000 sf contiguous use
- Adjacent to the Murano hotel and downtown Tacoma YMCA

SECOND FLOOR - AVAILABILITY

COURT "C" ALLEY



LEASED

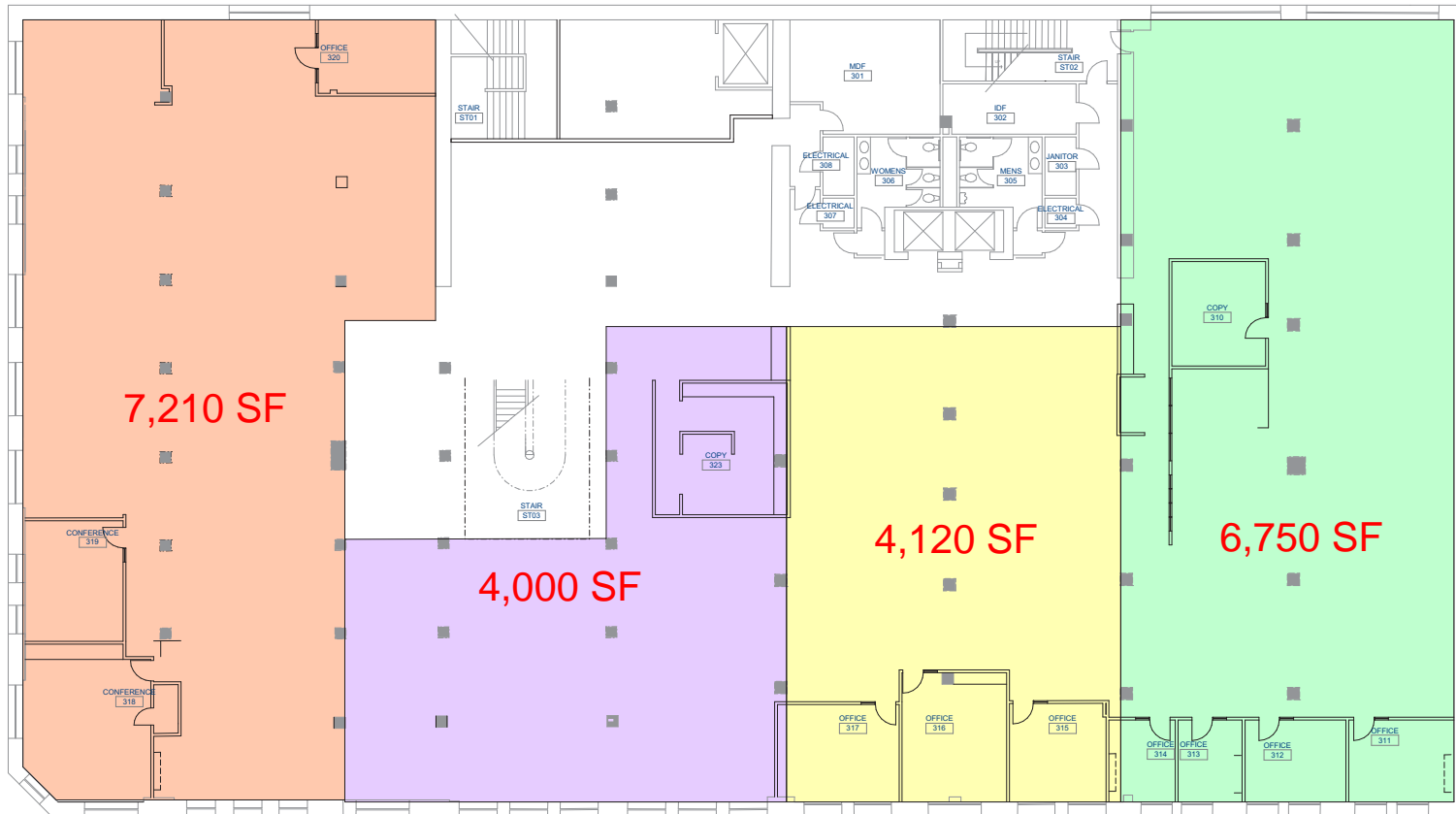
5,880 SF

6,820 SF

SECOND FLOOR — 12,700 SF AVAILABLE

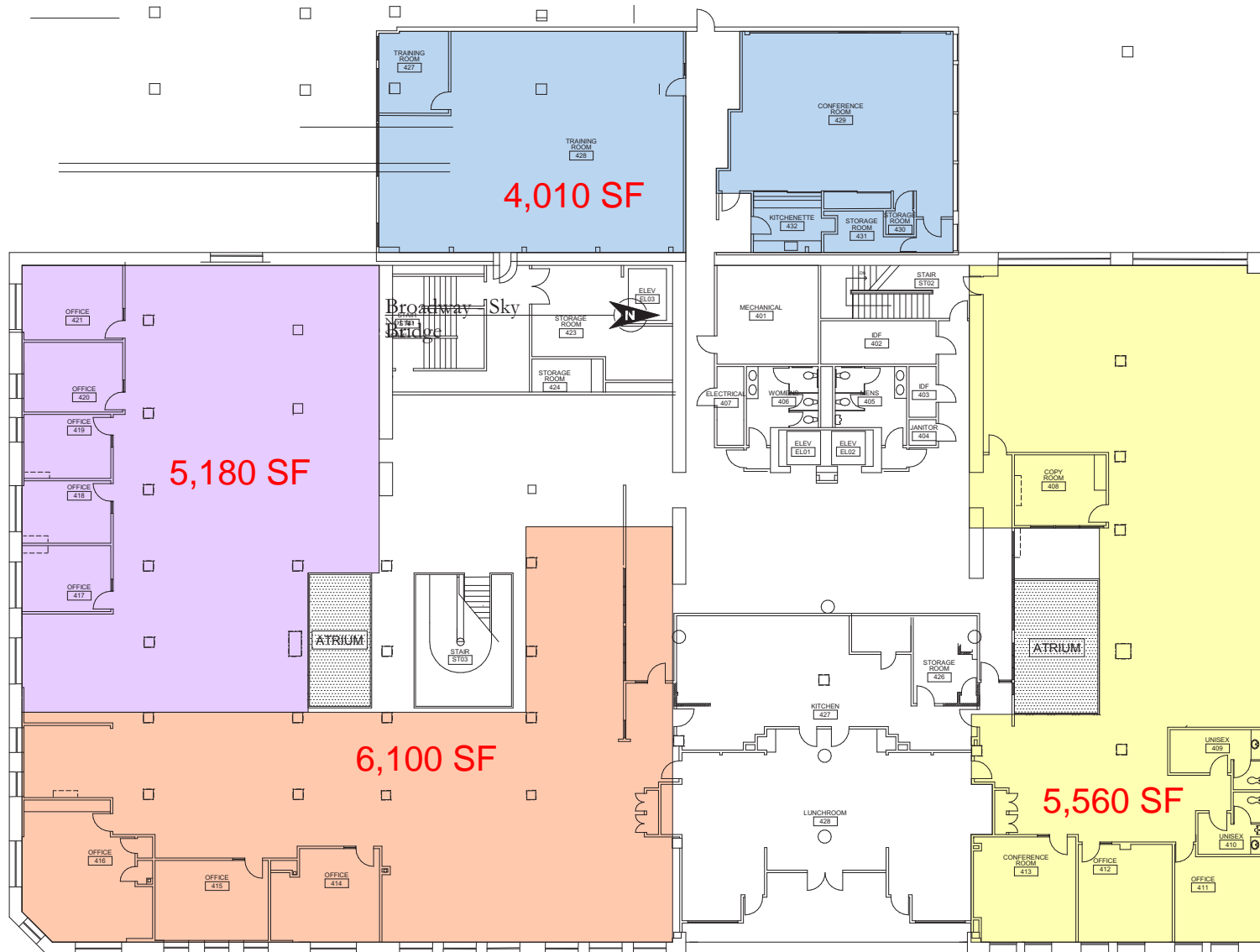
THIRD FLOOR - AVAILABILITY

COURT "C" ALLEY



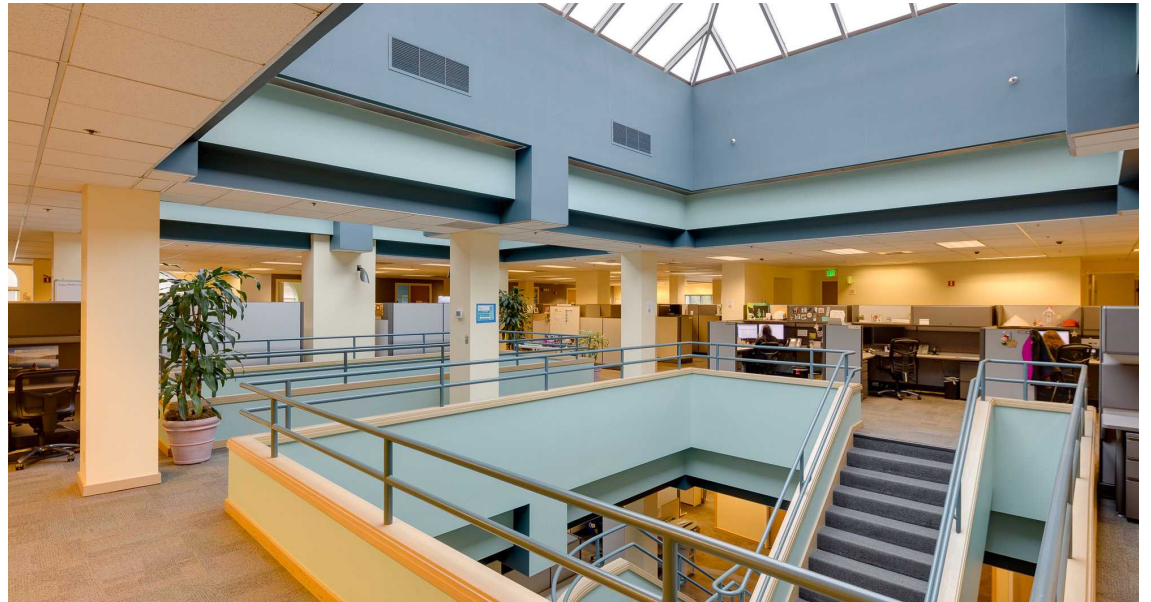
THIRD FLOOR — 22,080 SF AVAILABLE

FOURTH FLOOR - AVAILABILITY

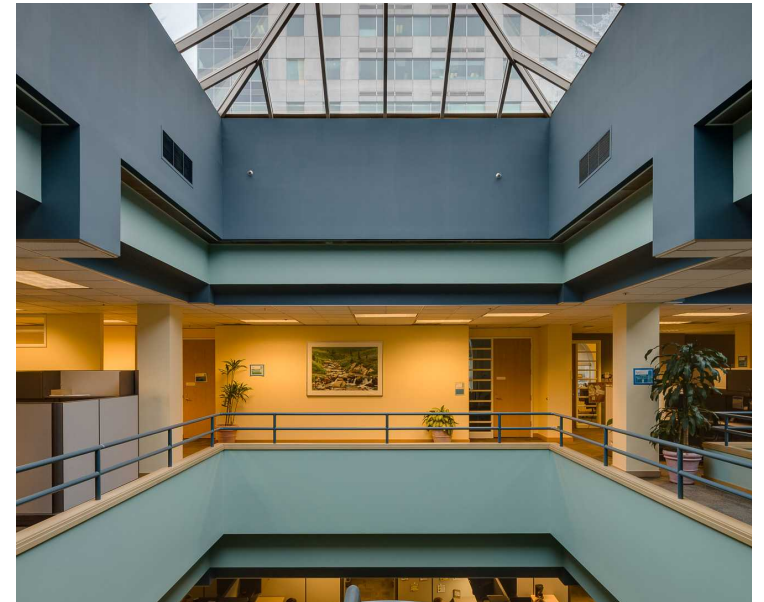


FOURTH FLOOR – 20,850 SF AVAILABLE

PHOTOS



PHOTOS



AERIAL MAP

