

760 ALOHA

760 Aloha St. | Seattle, WA 98109



NEWMARK

NITZE-STAGEN

BUILDING HIGHLIGHTS

- A juxtaposition of old and new—the project pays homage to the neighborhood’s history while contributing to its vibrant future.
- Levels one and two will feature new warehouse-style windows reminiscent of the property’s original use with completely upgraded interior finishes that highlight the building’s historic charm.
- Levels three through six will be newly-built using steel and concrete construction and will feature floor-to-ceiling curtain wall windows.
- Highly customizable lobby configuration, suitable for a single or multi-tenant lease-up scenario.

**837 SF
rooftop deck**
with striking views of
Lake Union and the
Seattle skyline.

**Bike
storage
and shower
facilities**
available on-site










Efficient **open
floor plates**
with an innovative
side-core design.

Prominent
**building
signage**
available.





BUILDING FACTS

	PROPERTY ADDRESS	760 Aloha Street, Seattle, WA 98109
	BUILDING TYPE	Steel and concrete construction
	FLOORS	Six
	TYPICAL FLOOR PLATE	8,000 RSF
	PARKING	24 covered and secured
	GROSS BUILDING SIZE	40,990 SF
	RETAIL RSF	Up to 3,217 SF on ground floor
	ESTIMATED DELIVERY	May 2023
	LEED CERTIFICATION	Silver

STACKING PLAN

6TH FLOOR: 4,403 SF
(Office)

5TH FLOOR: 8,183 SF
(Office)

4TH FLOOR: 8,519 SF
(Office)

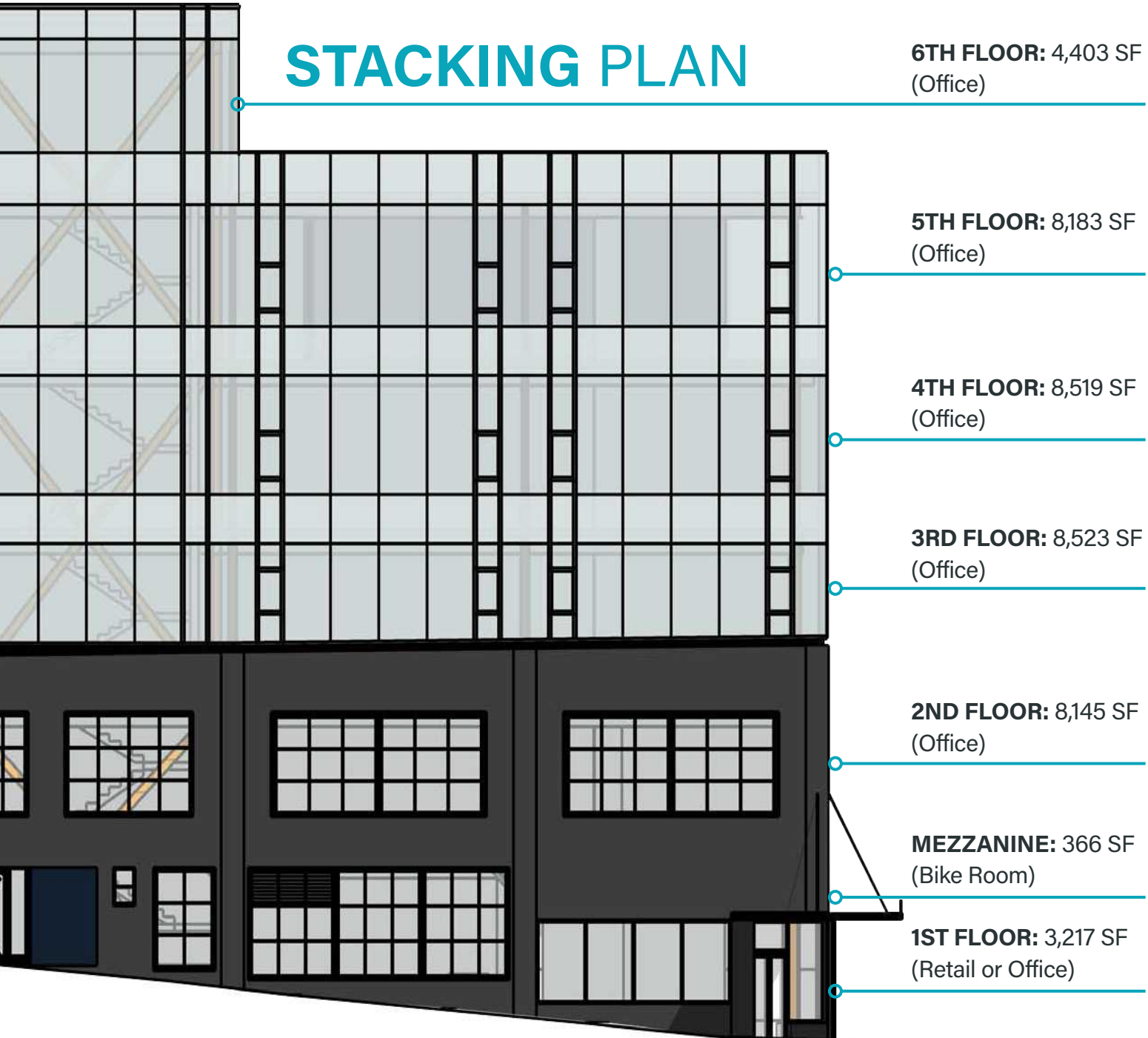
3RD FLOOR: 8,523 SF
(Office)

2ND FLOOR: 8,145 SF
(Office)

MEZZANINE: 366 SF
(Bike Room)

1ST FLOOR: 3,217 SF
(Retail or Office)

TOTAL: 40,990 SF

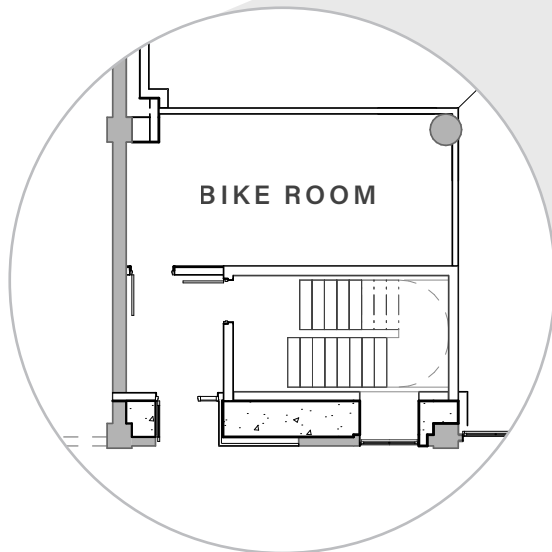
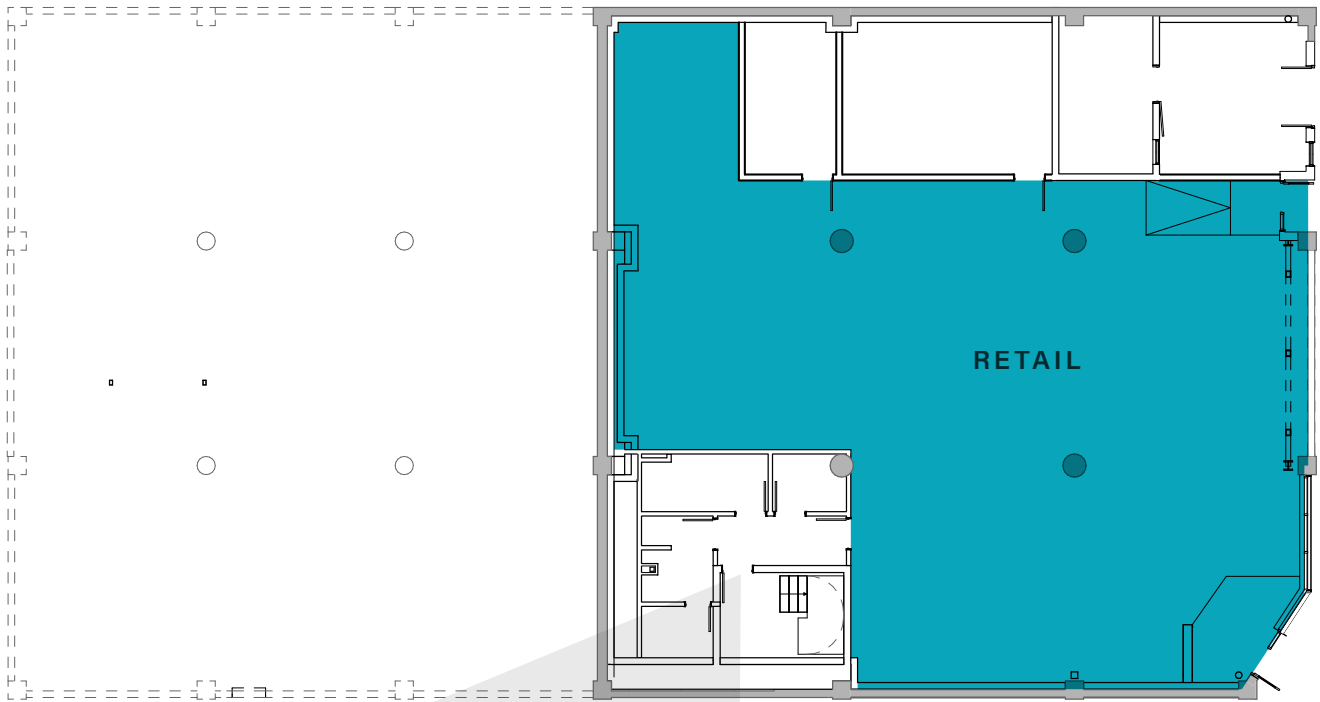


FLOOR PLAN

First Floor Retail

3,217 SF

Available Now

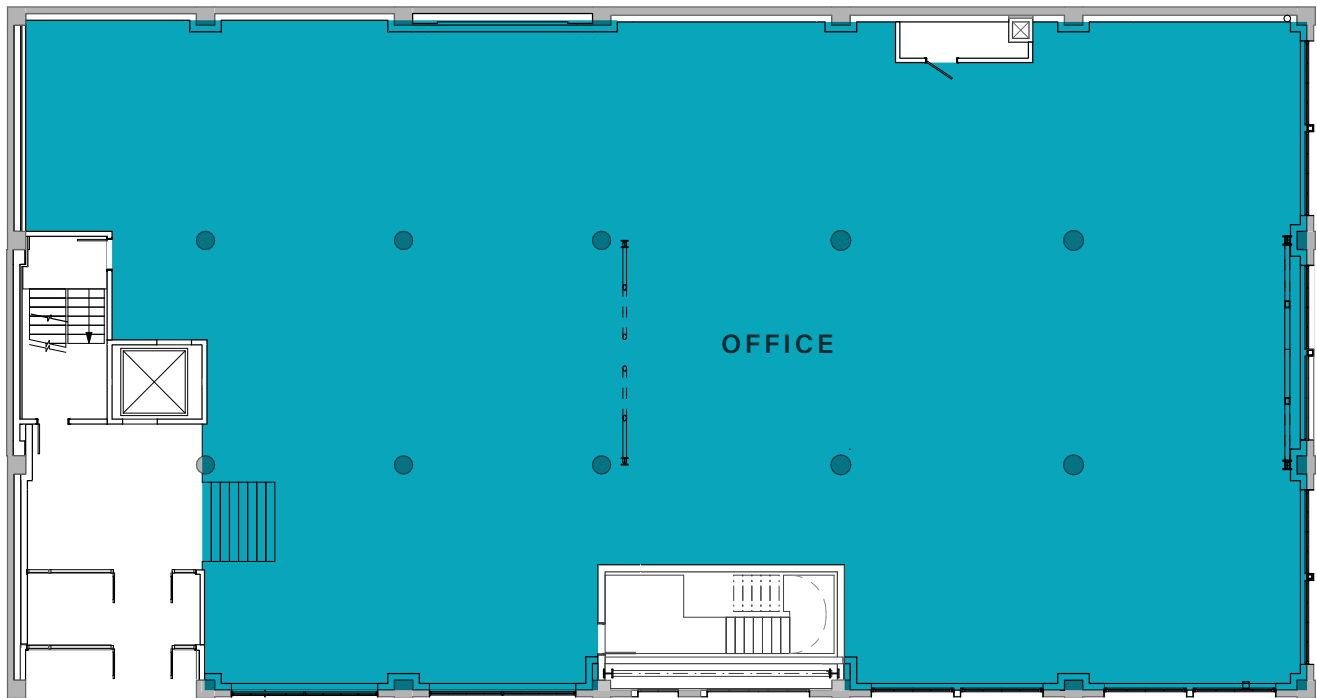


FLOOR PLAN

Second Floor

8,145 SF

Available Now

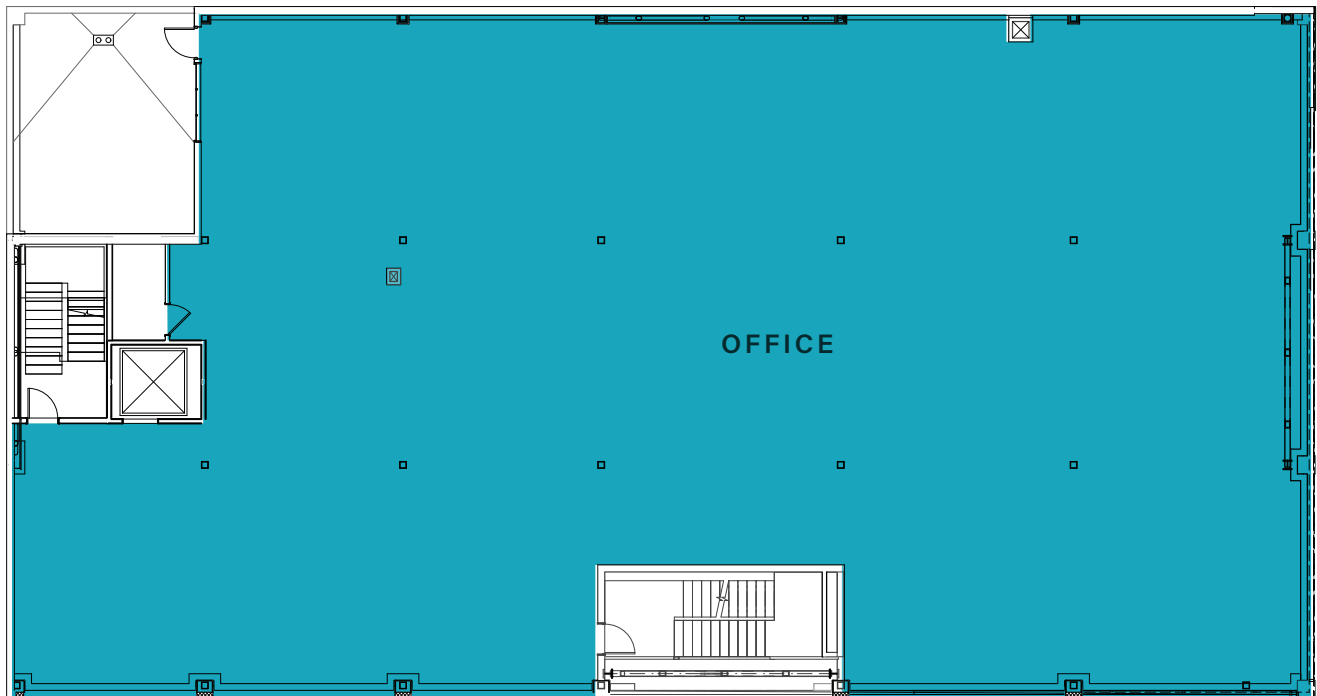


FLOOR PLAN

Third Floor

8,523 SF

Available Now

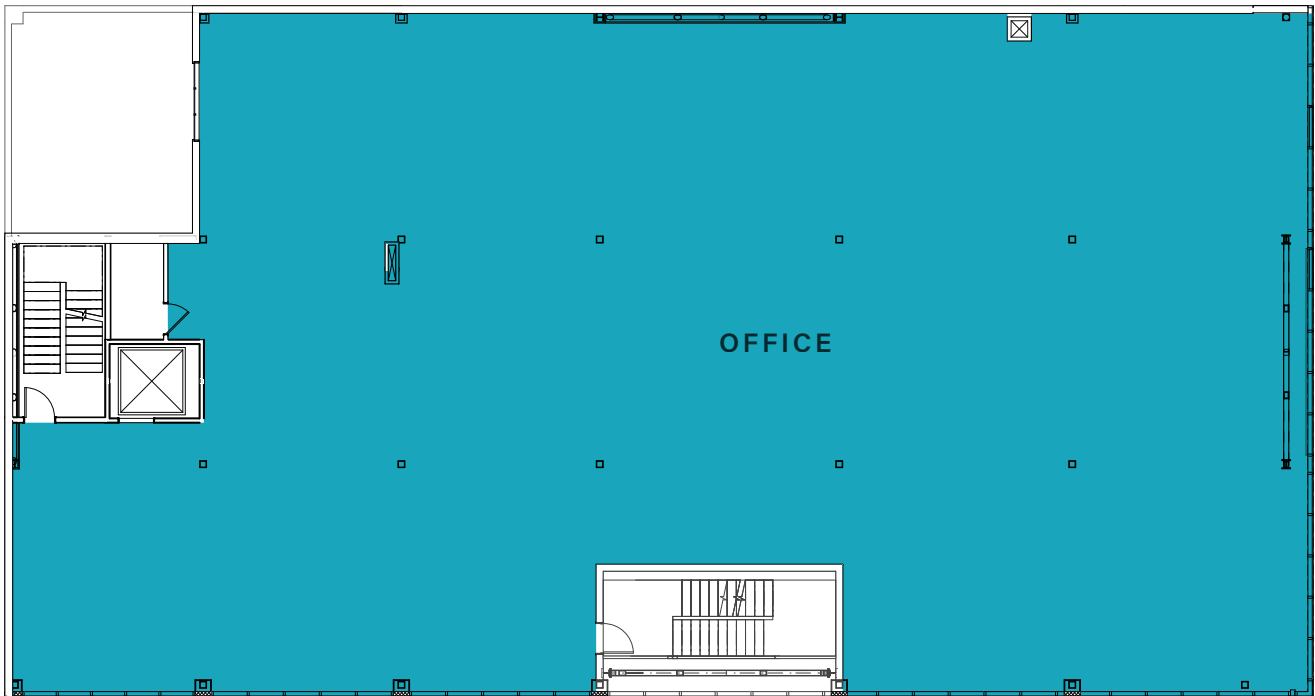


FLOOR PLAN

Fourth Floor

8,519 SF

Available Now

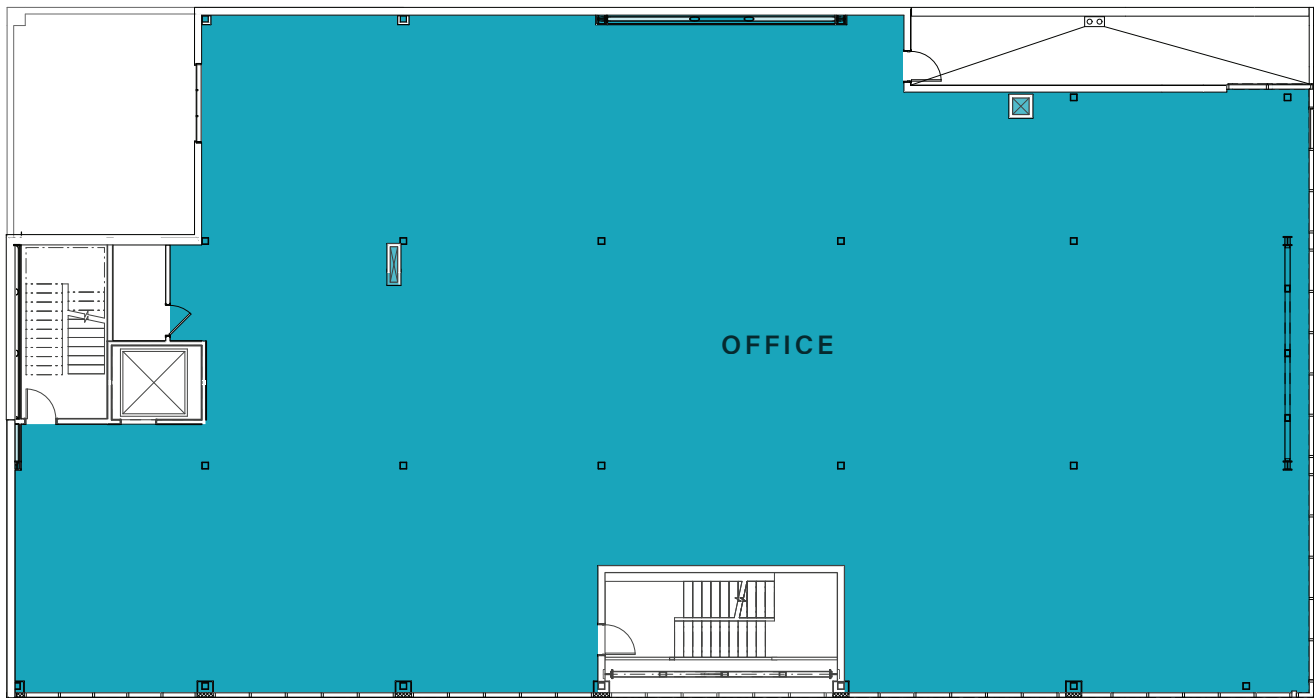


FLOOR PLAN

Fifth Floor

8,183 SF

Available Now

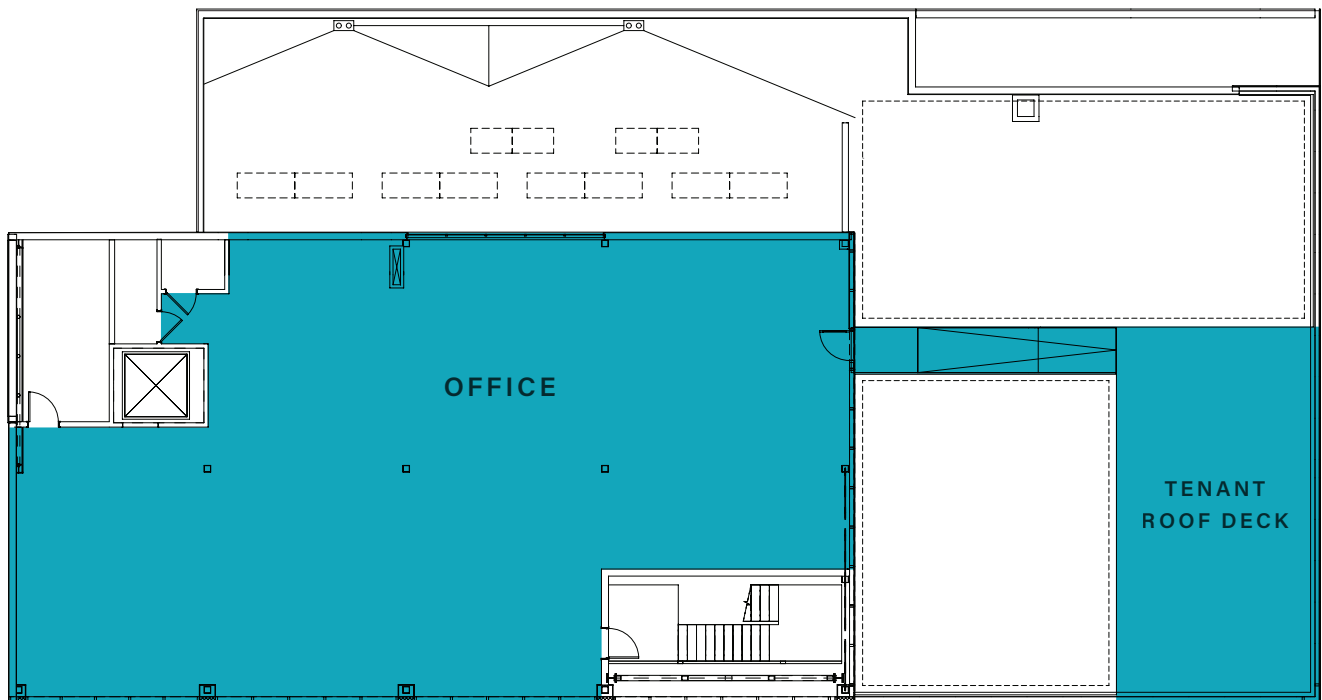


FLOOR PLAN

Sixth Floor

4,403 SF

Available Now



AMENITIES WITHIN 1 MILE



30+
RESTAURANTS



20+
COFFEE SHOPS



10+
BARS / PUBS



8
HOTELS



6
GYMS/FITNESS
CENTERS

760
ALOHA



760 ALOHA

760 Aloha St. | Seattle, WA 98109

DANIEL SEGER
206.487.5163
daniel.seger@nmrk.com

CAVAN O'KEEFE
206.395.2903
cavan.okeefe@nmrk.com

NEWMARK

NITZE-STAGEN

The distributor of this communication is performing acts for which a real estate license is required. The information contained herein has been obtained from sources deemed reliable but has not been verified and no guarantee, warranty or representation, either express or implied, is made with respect to such information. Terms of sale or lease and availability are subject to change or withdrawal without notice. 18-1220