

FOR LEASE

BUILT-OUT SALON SPACE

2723 Eastlake Avenue East, Seattle, WA 98102

AVAILABLE  
NOW

For more information please contact:

LAURA MILLER

[laura@gibraltarusa.com](mailto:laura@gibraltarusa.com)

206.351.3573





2723 EASTLAKE AVENUE EAST, SEATTLE, WA 98102

## BUILT-OUT SALON SPACE



### HIGHLIGHTS

- Rare opportunity to lease a fully built-out salon space in Seattle's desirable Eastlake neighborhood
- Located on the street-level of Remi Apartments, a 34-unit apartment community only 1 block from Lake Union
- High-visibility storefront along the Eastlake Avenue corridor, easily accessible from I-5, SR-520, South Lake Union, Capitol Hill, University District, and Downtown
- New HVAC, flooring and paint
- Parking: 10 surface stalls (shared with Building retail tenants and 6 secure garage stalls at \$100/stall per month
- Retail co-tenants include Hamlin Market and Puget Sound Periodontics
- 2,501 SF
- Rental Rate \$28/SF plus NNN \$1,117.70/month = \$6,953.37 per month



**58**

TRANSIT SCORE



**79**

WALK SCORE



**74**

BIKE SCORE



**26,826**

TOTAL POPULATION



**12,151**

TOTAL HOUSEHOLDS



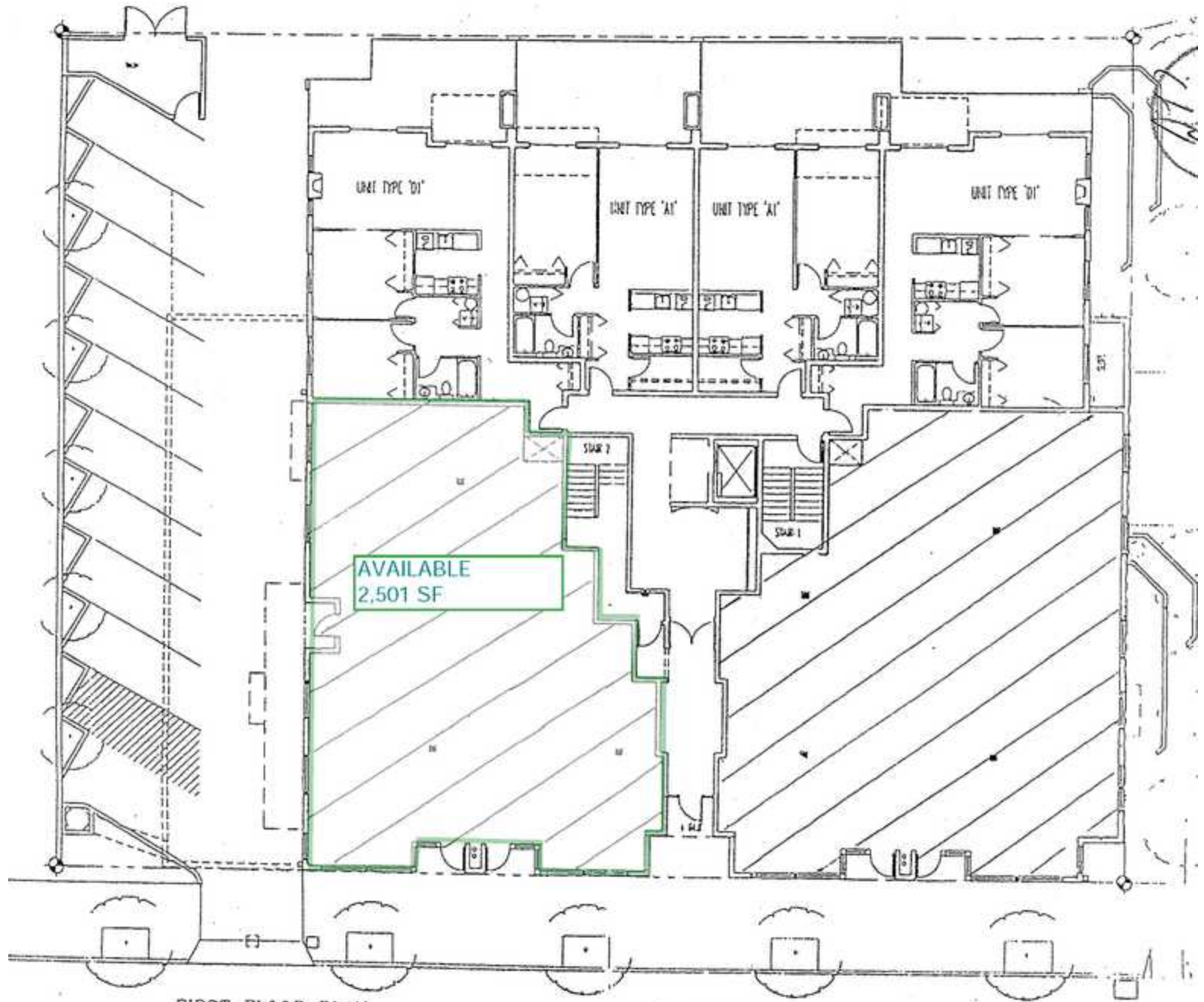
**\$125,492**

MEDIAN INCOME

\*Estimated 2023 Demographics based on a 1 mile radius

2723 EASTLAKE AVENUE EAST, SEATTLE, WA 98102

# BUILT-OUT SALON SPACE



FIRST FLOOR PLAN

EASTLAKE AVE. E.

Daly



2723 EASTLAKE AVENUE EAST, SEATTLE, WA 98102

# BUILT-OUT SALON SPACE

