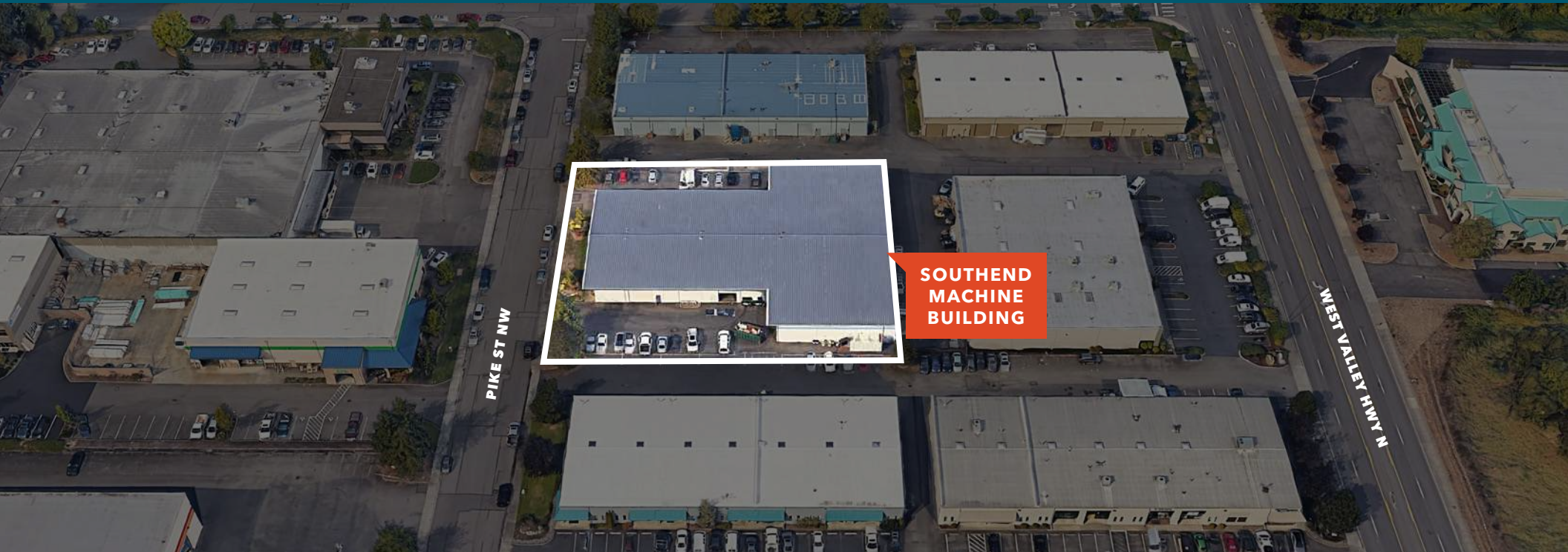




FOR LEASE

Southend Machine Building

1802 PIKE STREET NW | AUBURN, WA



SOUTHEND
MACHINE
BUILDING

22,300 total square feet divisible

MIKE NEWTON
206.248.7311
mike.newton@kidder.com

**Kidder
Mathews**

This information supplied herein is from sources we deem reliable. It is provided without any representation, warranty, or guarantee, expressed or implied as to its accuracy. Prospective Buyer or Tenant should conduct an independent investigation and verification of all matters deemed to be material, including, but not limited to, statements of income and expenses. Consult your attorney, accountant, or other professional advisor.

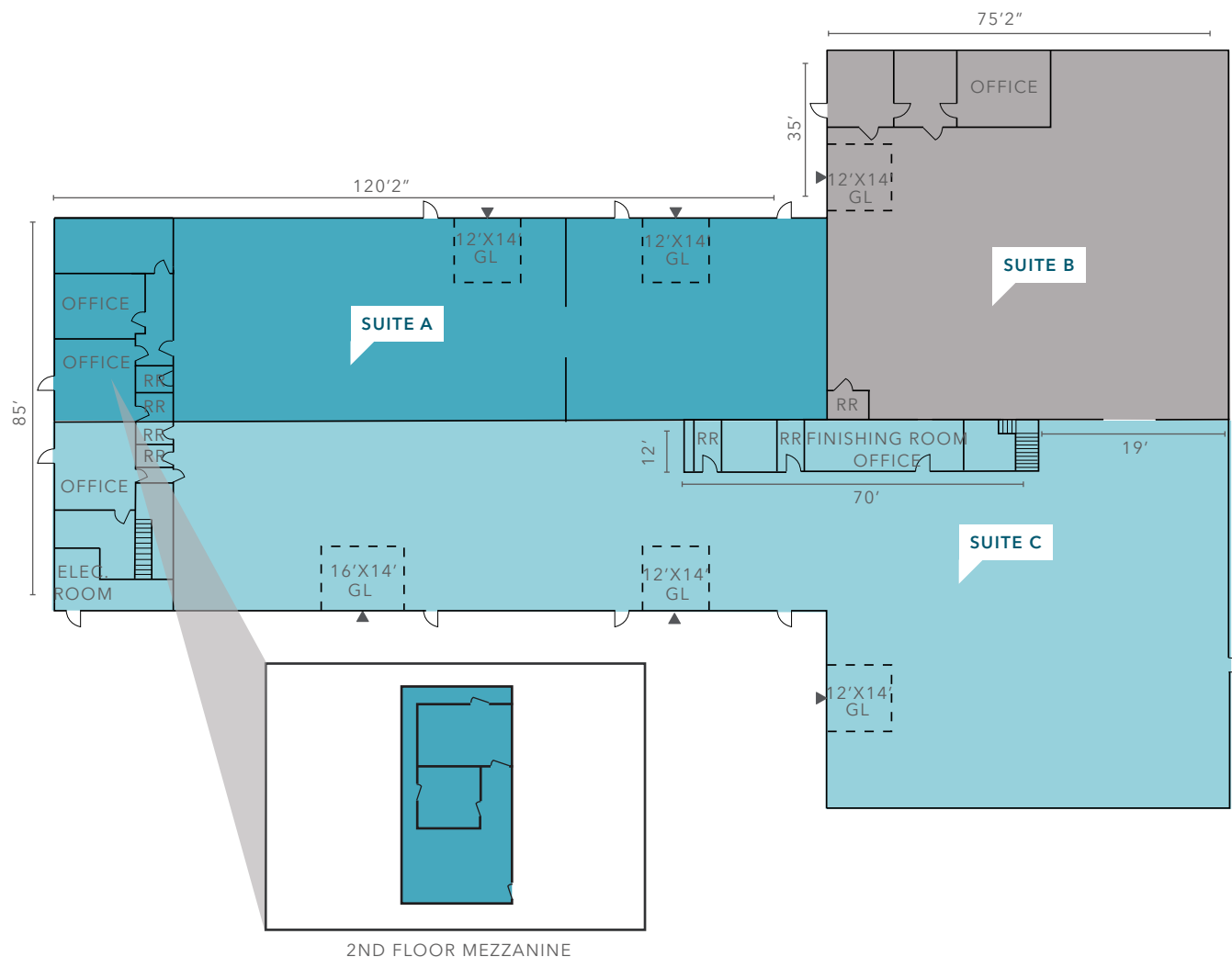
KIDDER.COM

FOR LEASE

Southend Machine Building

1802 PIKE STREET NW | AUBURN, WA

Site Plan



SIZES AVAILABLE

22,300 SF (2,830 SF office)

SUITE A - 5,246 SF (950 SF office)

SUITE B - 6,044 SF (500 SF office)

SUITES A & B - 11,150 SF

SUITES B & C - 17,194 SF

SUITE C - 11,150 SF (1,380 SF office)

1,200 amps power

18' clear height

SIX oversized grade level doors

600 SF of bonus mezzanine storage

PLEASE call agent for more info

MIKE NEWTON

206.248.7311

mike.newton@kidder.com

KIDDER.COM

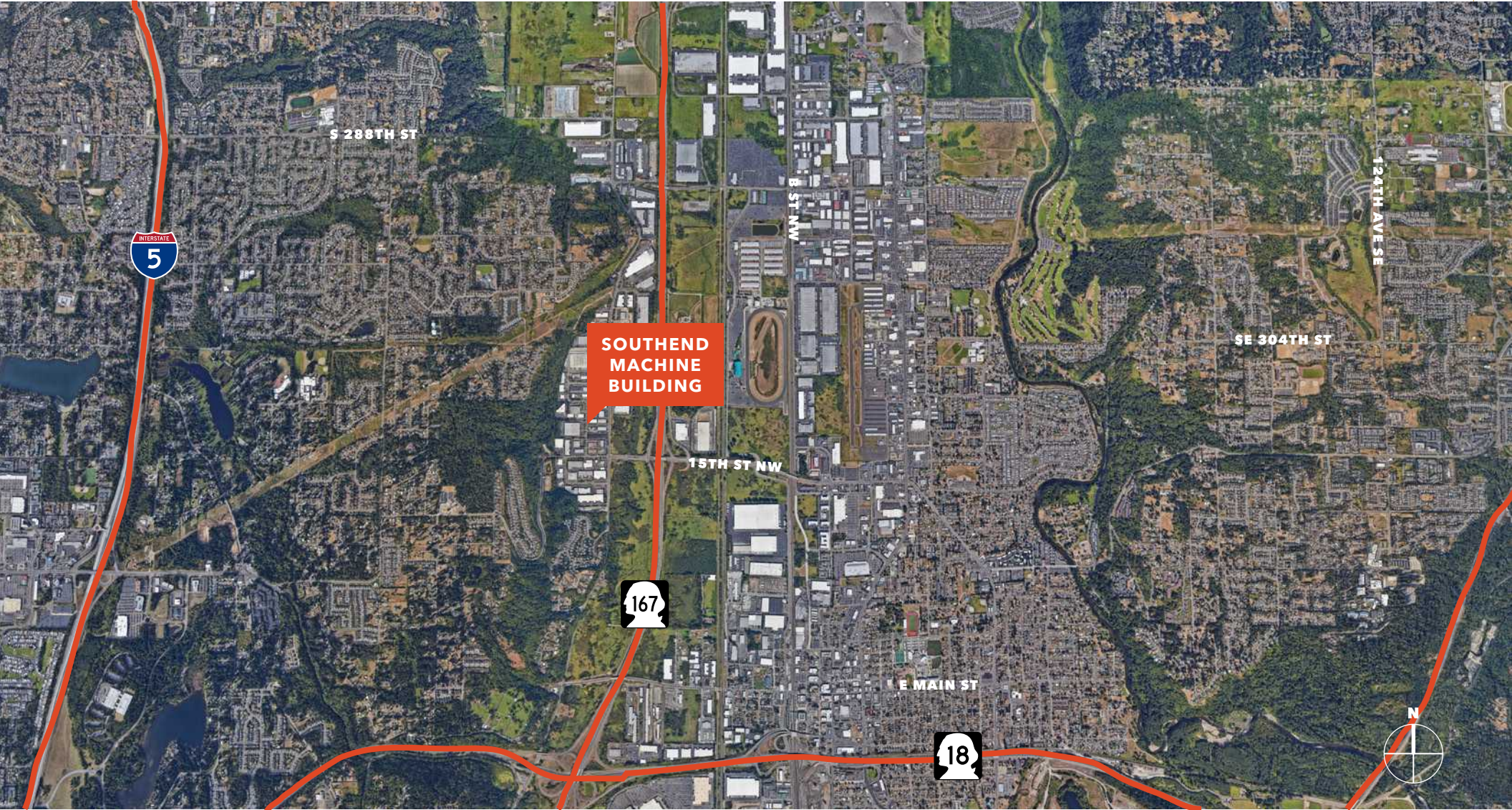
This information supplied herein is from sources we deem reliable. It is provided without any representation, warranty, or guarantee, expressed or implied as to its accuracy. Prospective Buyer or Tenant should conduct an independent investigation and verification of all matters deemed to be material, including, but not limited to, statements of income and expenses. Consult your attorney, accountant, or other professional advisor.

km Kidder Mathews

FOR LEASE

Southend Machine Building

1802 PIKE STREET NW | AUBURN, WA



KIDDER.COM

This information supplied herein is from sources we deem reliable. It is provided without any representation, warranty, or guarantee, expressed or implied as to its accuracy. Prospective Buyer or Tenant should conduct an independent investigation and verification of all matters deemed to be material, including, but not limited to, statements of income and expenses. Consult your attorney, accountant, or other professional advisor.

km Kidder Mathews