

8,000 TOTAL SF

INDUSTRIAL MANUFACTURING/WAREHOUSE



FOR LEASE

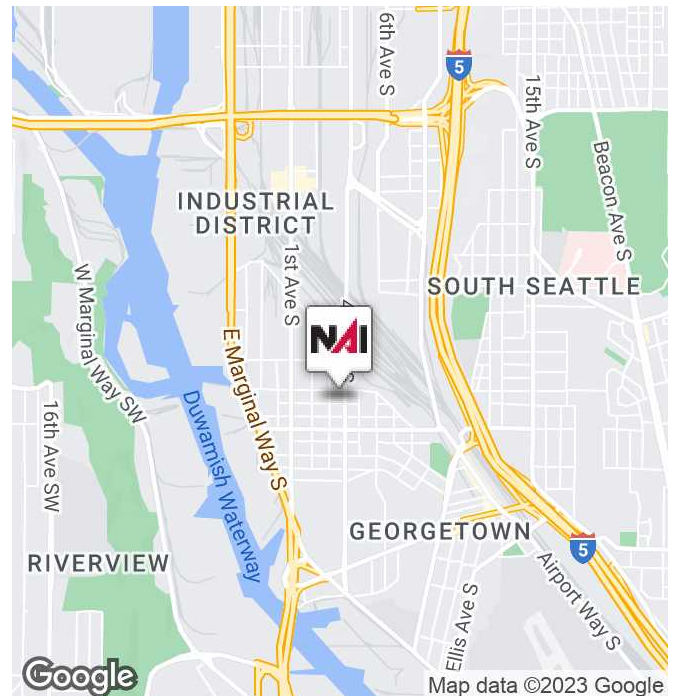


317 S Bennett Street

Seattle, Washington 98108

Property Highlights

- 8,000 Total SF
- 4,000 SF of 1st floor manufacturing warehouse
- 4,000 SF of 2nd floor office
- Potentially divisible to 4,000-5,000 SF
- Excellent location off of 1st Avenue S
- Parking ratio: 4 stalls per 1,000 SF
- Above average power
- Lease Rate: \$1.60/SF/Mo., plus NNN
- NNN: \$0.33/SF/Mo. (est.), plus utilities
- Available Sept./Oct. 2023



<https://www.nai-pp.com>

Bob Swain, CCIM
Partner | 425.586.5622
bswain@nai-pp.com

NO WARRANTY, EXPRESS OR IMPLIED, IS MADE AS TO THE ACCURACY OF THE INFORMATION CONTAINED HEREIN. THIS INFORMATION IS SUBMITTED SUBJECT TO ERRORS, OMISSIONS, CHANGE OF PRICE, RENTAL OR OTHER CONDITIONS, WITHDRAWAL WITHOUT NOTICE, AND IS SUBJECT TO ANY SPECIAL LISTING CONDITIONS IMPOSED BY OUR PRINCIPALS. COOPERATING BROKERS, BUYERS, TENANTS AND OTHER PARTIES WHO RECEIVE THIS DOCUMENT SHOULD NOT RELY ON IT, BUT SHOULD USE IT AS A STARTING POINT OF ANALYSIS, AND SHOULD INDEPENDENTLY CONFIRM THE ACCURACY OF THE INFORMATION CONTAINED HEREIN THROUGH A DUE DILIGENCE REVIEW OF THE BOOKS, RECORDS, FILES AND DOCUMENTS THAT CONSTITUTE RELIABLE SOURCES OF THE INFORMATION DESCRIBED HEREIN. LOGOS ARE FOR IDENTIFICATION PURPOSES ONLY AND MAY BE TRADEMARKS OF THEIR RESPECTIVE COMPANIES.

8,000 TOTAL SF

INDUSTRIAL MANUFACTURING/WAREHOUSE

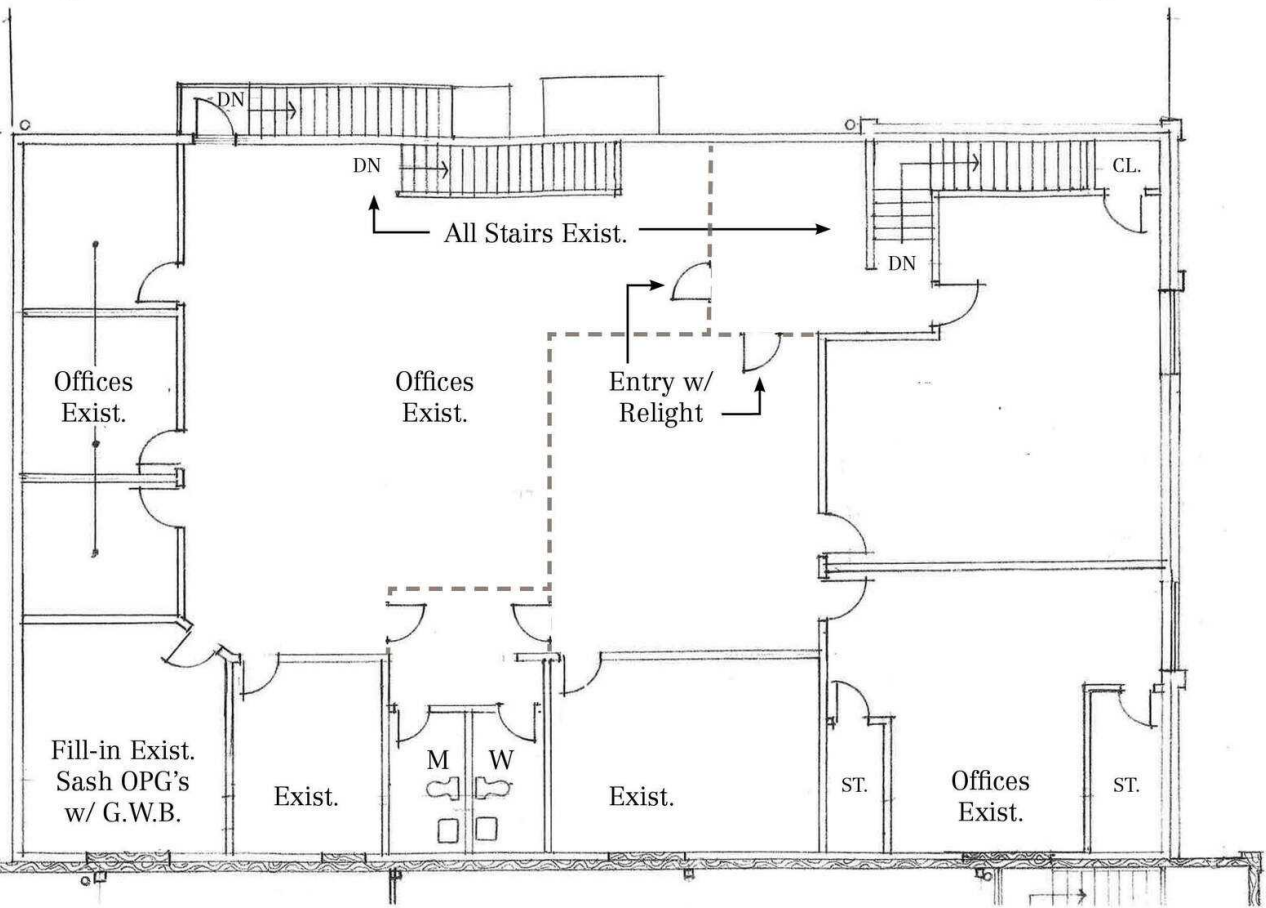
FOR LEASE



2nd Floor Office Plan

80' 0"

50'

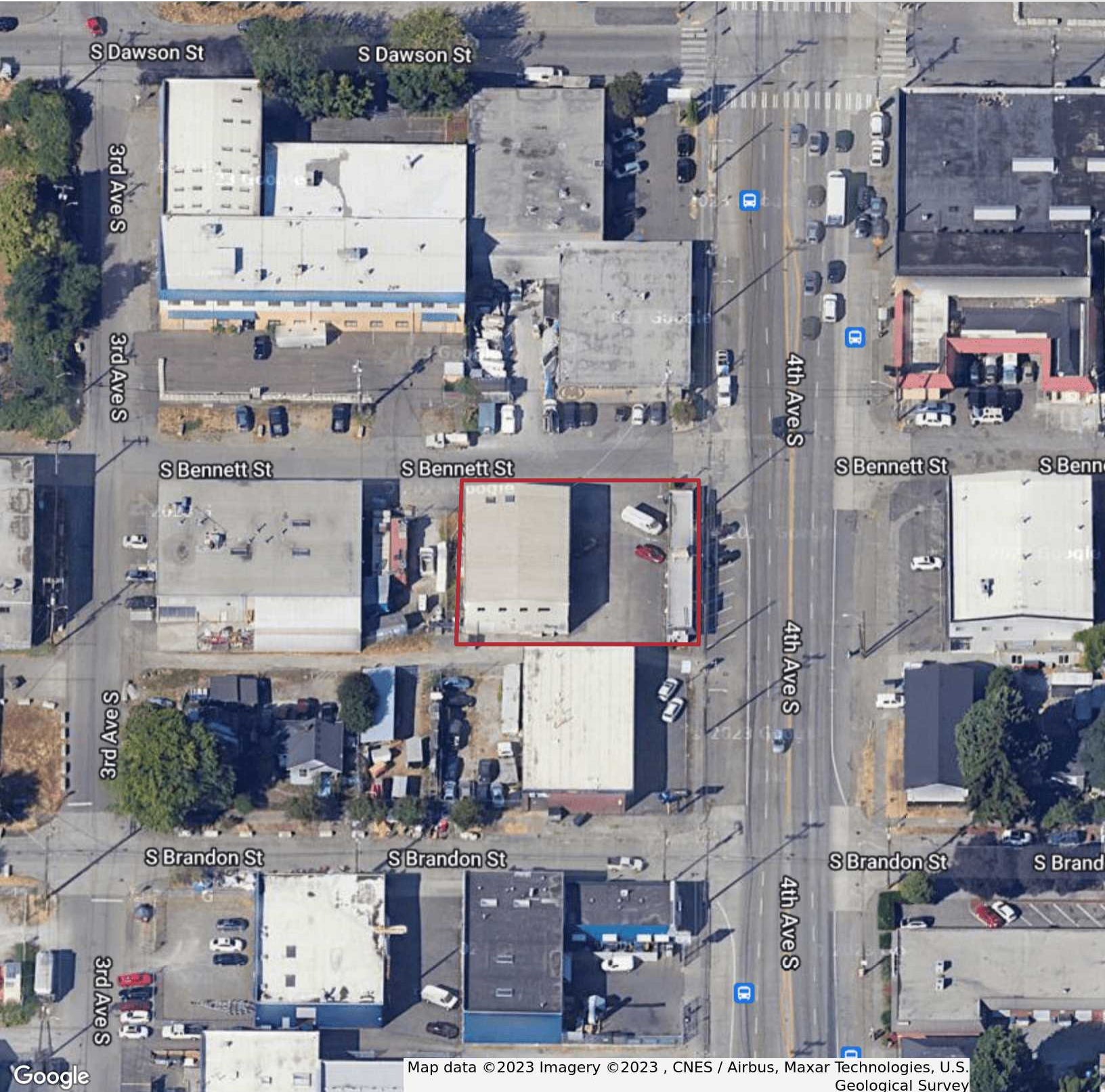


----- = proposed division of the space

8,000 TOTAL SF

INDUSTRIAL MANUFACTURING/WAREHOUSE

FOR LEASE



Google

Map data ©2023 Imagery ©2023 , CNES / Airbus, Maxar Technologies, U.S. Geological Survey



Bob Swain, CCIM
Partner | 425.586.5622
bswain@nai-psp.com

<https://www.nai-psp.com>

NO WARRANTY, EXPRESS OR IMPLIED, IS MADE AS TO THE ACCURACY OF THE INFORMATION CONTAINED HEREIN. THIS INFORMATION IS SUBMITTED SUBJECT TO ERRORS, OMISSIONS, CHANGE OF PRICE, RENTAL OR OTHER CONDITIONS, WITHDRAWAL WITHOUT NOTICE, AND IS SUBJECT TO ANY SPECIAL LISTING CONDITIONS IMPOSED BY OUR PRINCIPALS, COOPERATING BROKERS, BUYERS, TENANTS AND OTHER PARTIES WHO RECEIVE THIS DOCUMENT SHOULD NOT RELY ON IT, BUT SHOULD USE IT AS A STARTING POINT OF ANALYSIS, AND SHOULD INDEPENDENTLY CONFIRM THE ACCURACY OF THE INFORMATION CONTAINED HEREIN THROUGH A DUE DILIGENCE REVIEW OF THE BOOKS, RECORDS, FILES AND DOCUMENTS THAT CONSTITUTE RELIABLE SOURCES OF THE INFORMATION DESCRIBED HEREIN. LOGOS ARE FOR IDENTIFICATION PURPOSES ONLY AND MAY BE TRADEMARKS OF THEIR RESPECTIVE COMPANIES.