

AVAILABLE NOW!

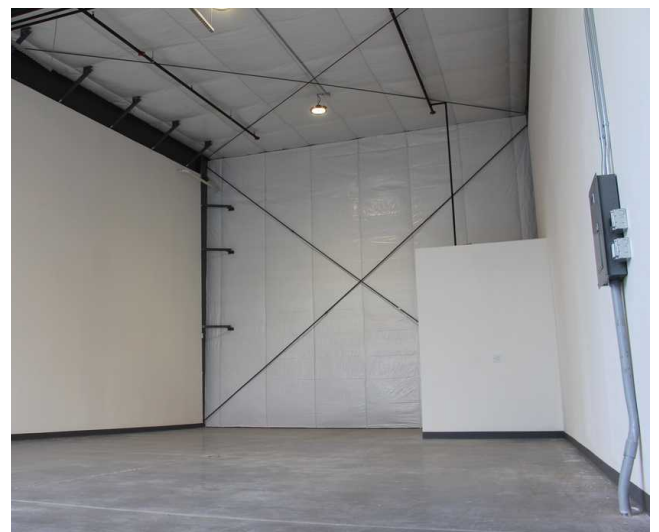
FOR LEASE



1625 Jill's Court | \$1600/Mo + NNN

Property Overview

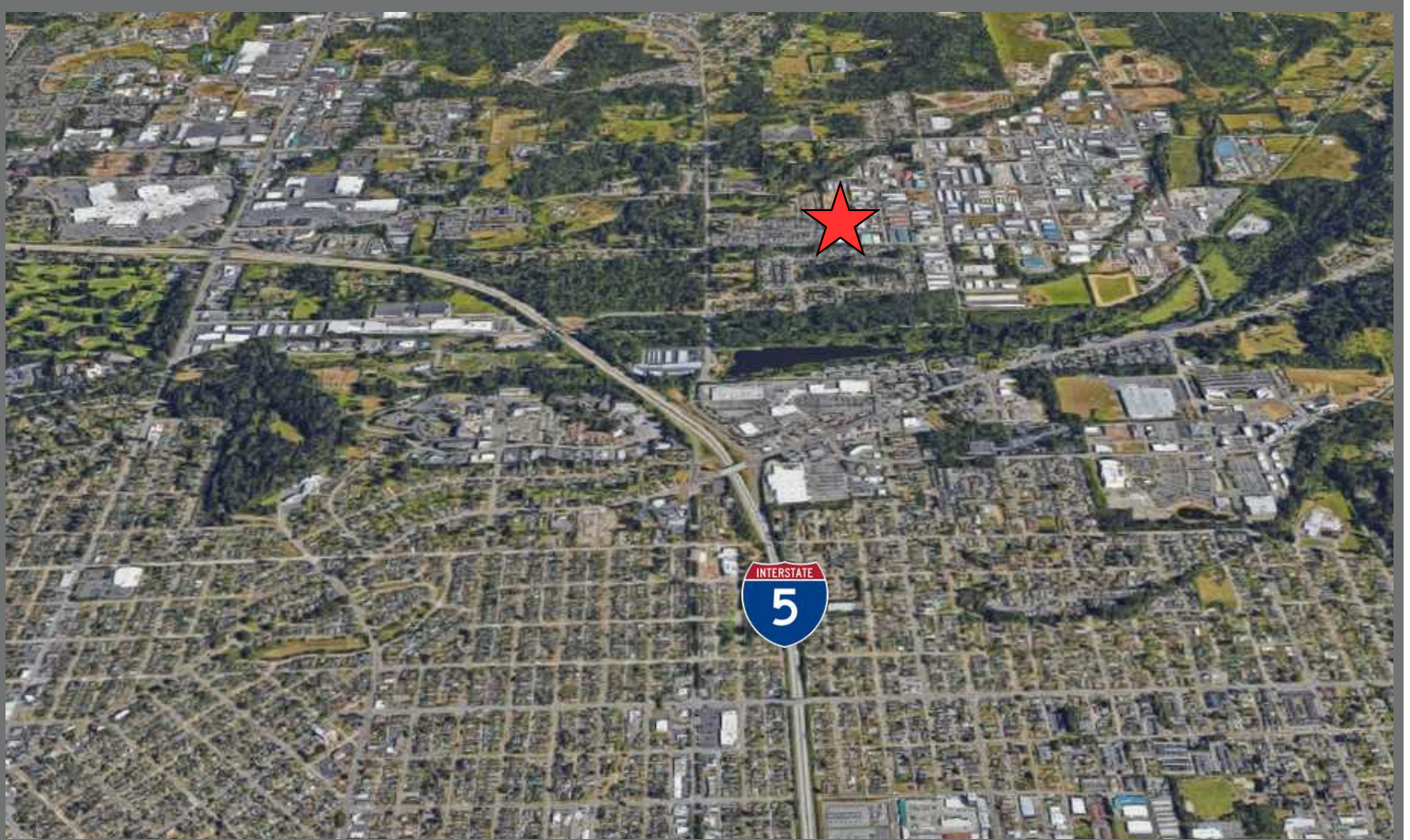
Irongate RediSpace Available for Lease, Units A2 & A7: Conveniently located in the Irongate Industrial Neighborhood, this condo has quality construction with steel framing and metal roof. 1250 SF, 14' x 14' overhead door, 3-Phase 150-amp power, 75,000 BTU heater, and ADA bathroom. 70-foot wide aisle provides easy access and maneuverability for larger vehicles and the property has a security gate for safety.



DAVE REHM

DaveRehm@outlook.com
360.961.5513
www.wrecommercial.com


Windermere
COMMERCIAL



Location Facts & Demographics

Demographics are determined by a 10 minute drive from 1625-1635 Jills Court, Bellingham, WA 98226

CITY, STATE

Bellingham, WA

POPULATION

47,030

AVG. HHSIZE

2.27

MEDIAN HH INCOME

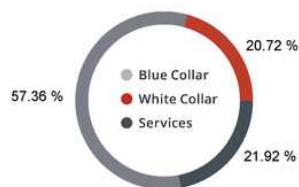
\$47,634

HOME OWNERSHIP

Renters: **12,298**

Owners: **8,523**

EMPLOYMENT



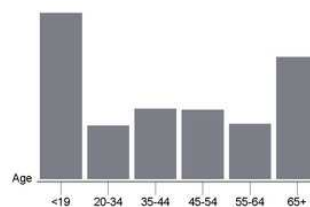
51.62 % **2.22 %**
Employed Unemployed

EDUCATION

High School Grad: **26.10 %**
Some College: **24.15 %**
Associates: **9.76 %**
Bachelors: **27.92 %**

GENDER & AGE

48.32 % 51.68 %

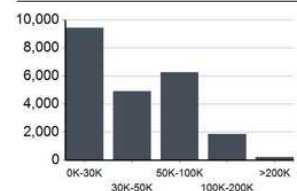


RACE & ETHNICITY

White: **72.31 %**
Asian: **10.65 %**
Native American: **0.51 %**
Pacific Islanders: **0.06 %**
African-American: **0.67 %**
Hispanic: **8.63 %**
Two or More Races: **7.18 %**

Catylist Research

INCOME BY HOUSEHOLD



HH SPENDING



This information is provided for informational purposes only. It is provided without any representation, warranty or guarantee, expressed or implied, as to its accuracy. Prospective buyers of homes should conduct independent investigation and verification of all matters related to the subject property, including, but not limited to, all items and expenses. Contact your attorney, accountant, or other professional advisor.

