



FOR LEASE

Medical Center of Issaquah

450 NW Gilman Blvd, Issaquah, WA 98027

\$28.50/SF, NNN



Property Highlights

- Recently renovated common areas
- Class A medical office space
- Easy access to I-90
- Building equipped with sprinklers
- Built out spaces can accommodate a variety of medical office uses
- Free on site parking at 3.89/1,000 SF ratio



Brian Toy
 Director
 +1 425 201 1224
 brian.toy@cushwake.com

Taylor Hudson
 Director
 +1 425 201 1205
 taylor.hudson@cushwake.com

11235 SE 6th Street, Suite 200
 Bellevue, WA 98004
 Main +1 425 455 4500
 Fax +1 425 453 5381
cushmanandwakefield.com



FOR LEASE

Medical Center of Issaquah

450 NW Gilman Blvd, Issaquah, WA 98027

Availabilities

SUITE 203 2,947 RSF

SUITE 302 3,801 RSF

Asking Rate: \$28.50/SF, NNN

2023 Opex: \$13.88/SF



Brian Toy
Director
+1 425 201 1224
brian.toy@cushwake.com

Taylor Hudson
Director
+1 425 201 1205
taylor.hudson@cushwake.com

11235 SE 6th Street, Suite 200
Bellevue, WA 98004
Main +1 425 455 4500
Fax +1 425 453 5381
cushmanandwakefield.com

©2023 Cushman & Wakefield. All rights reserved. The information contained in this communication is strictly confidential. This information has been obtained from sources believed to be reliable but has not been verified. NO WARRANTY OR REPRESENTATION, EXPRESS OR IMPLIED, IS MADE AS TO THE CONDITION OF THE PROPERTY (OR PROPERTIES) REFERENCED HEREIN OR AS TO THE ACCURACY OR COMPLETENESS OF THE INFORMATION CONTAINED HEREIN, AND SAME IS SUBMITTED SUBJECT TO ERRORS, OMISSIONS, CHANGE OF PRICE, RENTAL OR OTHER CONDITIONS, WITHDRAWAL WITHOUT NOTICE, AND TO ANY SPECIAL LISTING CONDITIONS IMPOSED BY THE PROPERTY OWNER(S). ANY PROJECTIONS, OPINIONS OR ESTIMATES ARE SUBJECT TO UNCERTAINTY AND DO NOT SIGNIFY CURRENT OR FUTURE PROPERTY PERFORMANCE.



FOR LEASE

Medical Center of Issaquah

450 NW Gilman Blvd, Issaquah, WA 98027



*“Picturesque
Riverfront Location”*

Brian Toy
Director
+1 425 201 1224
brian.toy@cushwake.com

Taylor Hudson
Director
+1 425 201 1205
taylor.hudson@cushwake.com

11235 SE 6th Street, Suite 200
Bellevue, WA 98004
Main +1 425 455 4500
Fax +1 425 453 5381
cushmanandwakefield.com



FOR LEASE

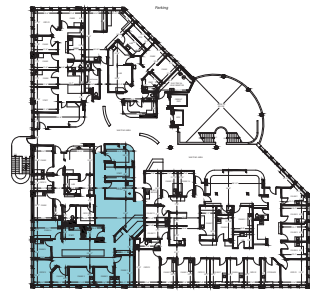
Medical Center of Issaquah

450 NW Gilman Blvd, Issaquah, WA 98027

SECOND FLOOR Availability

Availabilities

SUITE 203 2,947 RSF

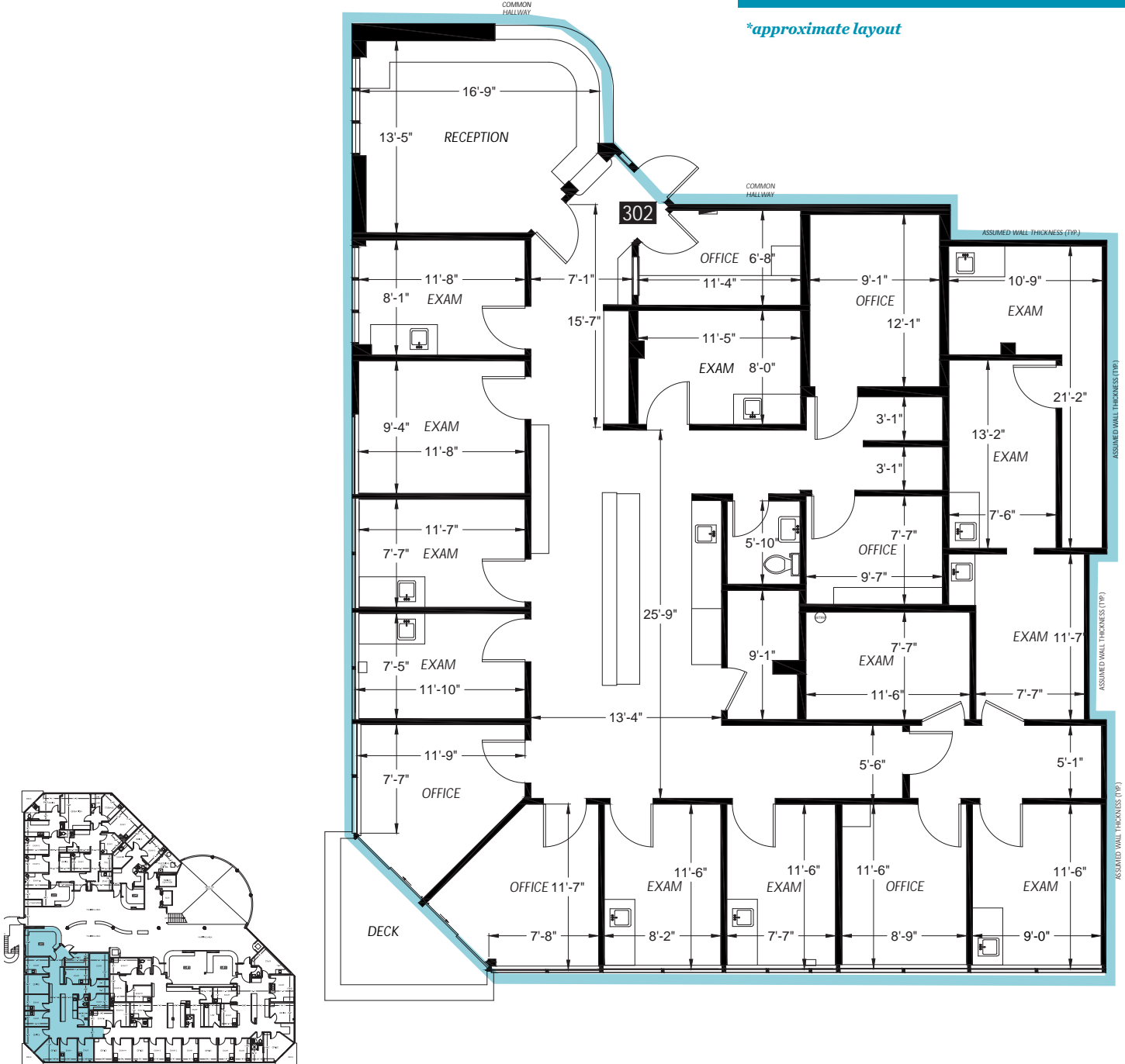


Brian Toy
 Director
 +1 425 201 1224
 brian.toy@cushwake.com

Taylor Hudson
 Director
 +1 425 201 1205
 taylor.hudson@cushwake.com

11235 SE 6th Street, Suite 200
 Bellevue, WA 98004
 Main +1 425 455 4500
 Fax +1 425 453 5381
 cushmanandwakefield.com

©2023 Cushman & Wakefield. All rights reserved. The information contained in this communication is strictly confidential. This information has been obtained from sources believed to be reliable but has not been verified. NO WARRANTY OR REPRESENTATION, EXPRESS OR IMPLIED, IS MADE AS TO THE CONDITION OF THE PROPERTY (OR PROPERTIES) REFERENCED HEREIN OR AS TO THE ACCURACY OR COMPLETENESS OF THE INFORMATION CONTAINED HEREIN, AND SAME IS SUBMITTED SUBJECT TO ERRORS, OMISSIONS, CHANGE OF PRICE, RENTAL OR OTHER CONDITIONS, WITHDRAWAL WITHOUT NOTICE, AND TO ANY SPECIAL LISTING CONDITIONS IMPOSED BY THE PROPERTY OWNER(S). ANY PROJECTIONS, OPINIONS OR ESTIMATES ARE SUBJECT TO UNCERTAINTY AND DO NOT SIGNIFY CURRENT OR FUTURE PROPERTY PERFORMANCE.

THIRD FLOOR Availability
Availabilities
SUITE 302* 3,801 RSF
**approximate layout*


Brian Toy
Director
+1 425 201 1224
brian.toy@cushwake.com

Taylor Hudson
Director
+1 425 201 1205
taylor.hudson@cushwake.com

11235 SE 6th Street, Suite 200
Bellevue, WA 98004
Main +1 425 455 4500
Fax +1 425 453 5381
cushmanandwakefield.com