

# Kaylen CENTER

821-827 BELLEVUE WAY NE  
BELLEVUE, WASHINGTON



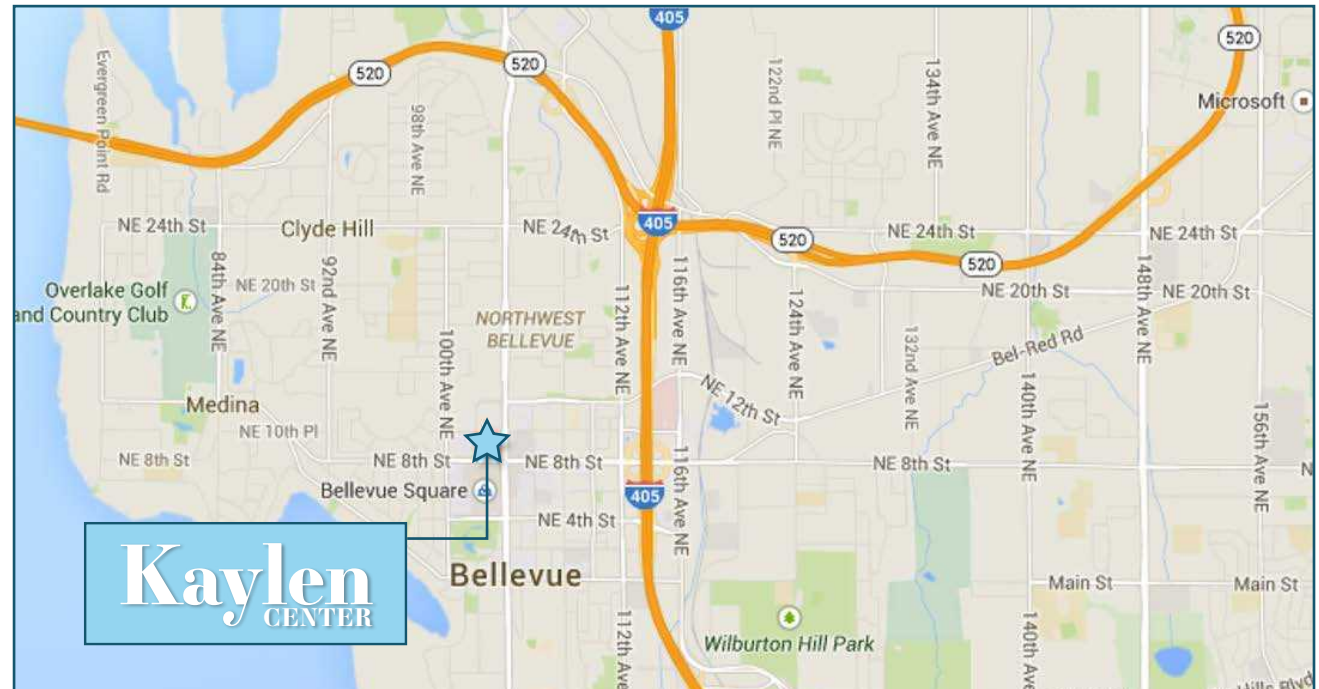
**PREMIUM DOWNTOWN  
BELLEVUE LOCATION**

## AVAILABLE SPACE

FLOOR / SUITE	SIZE	AVAILABILITY
2 / 203	APPROX. 4,656 SF	NOW
2 / 205	APPROX. 3,128 SF	NOW

## PROPERTY FEATURES

- » Premium location across the street from Bellevue Square, Lincoln Square and Bellevue Place amenities
- » No load factor
- » Rental Rate: \$29.50/RSF, Gross
- » Comcast and CenturyLink services offered
- » Flexible lease terms
- » Owned and managed by Kemper Development Company



*The information contained herein has been given to us by the owner or sources that we deem reliable. We have no reason to doubt its accuracy, but we do not guarantee it. Prospective tenants should carefully verify all information contained herein.*

# Kaylen CENTER

821-827 BELLEVUE WAY NE  
BELLEVUE, WASHINGTON

For further information or to schedule a  
tour, please contact:

### CLAYTON HOLM

425.274.4287

[holm@broderickgroup.com](mailto:holm@broderickgroup.com)

### JIM KINERK

425.646.5221

[kinerk@broderickgroup.com](mailto:kinerk@broderickgroup.com)

### PAUL SWEENEY

425.646.5225

[sweeney@broderickgroup.com](mailto:sweeney@broderickgroup.com)

**BRODERICK**  
• GROUP •

10500 NE 8th Street, Suite 900  
Bellevue, Washington 98004  
main 425.646.3444  
[broderickgroup.com](http://broderickgroup.com)



# PREMIUM DOWNTOWN BELLEVUE LOCATION

# Kaylen CENTER

821-827 BELLEVUE WAY NE  
BELLEVUE, WASHINGTON

For further information or to schedule a  
tour, please contact:

**CLAYTON HOLM**

425.274.4287

[holm@broderickgroup.com](mailto:holm@broderickgroup.com)

**JIM KINERK**

425.646.5221

[kinerk@broderickgroup.com](mailto:kinerk@broderickgroup.com)

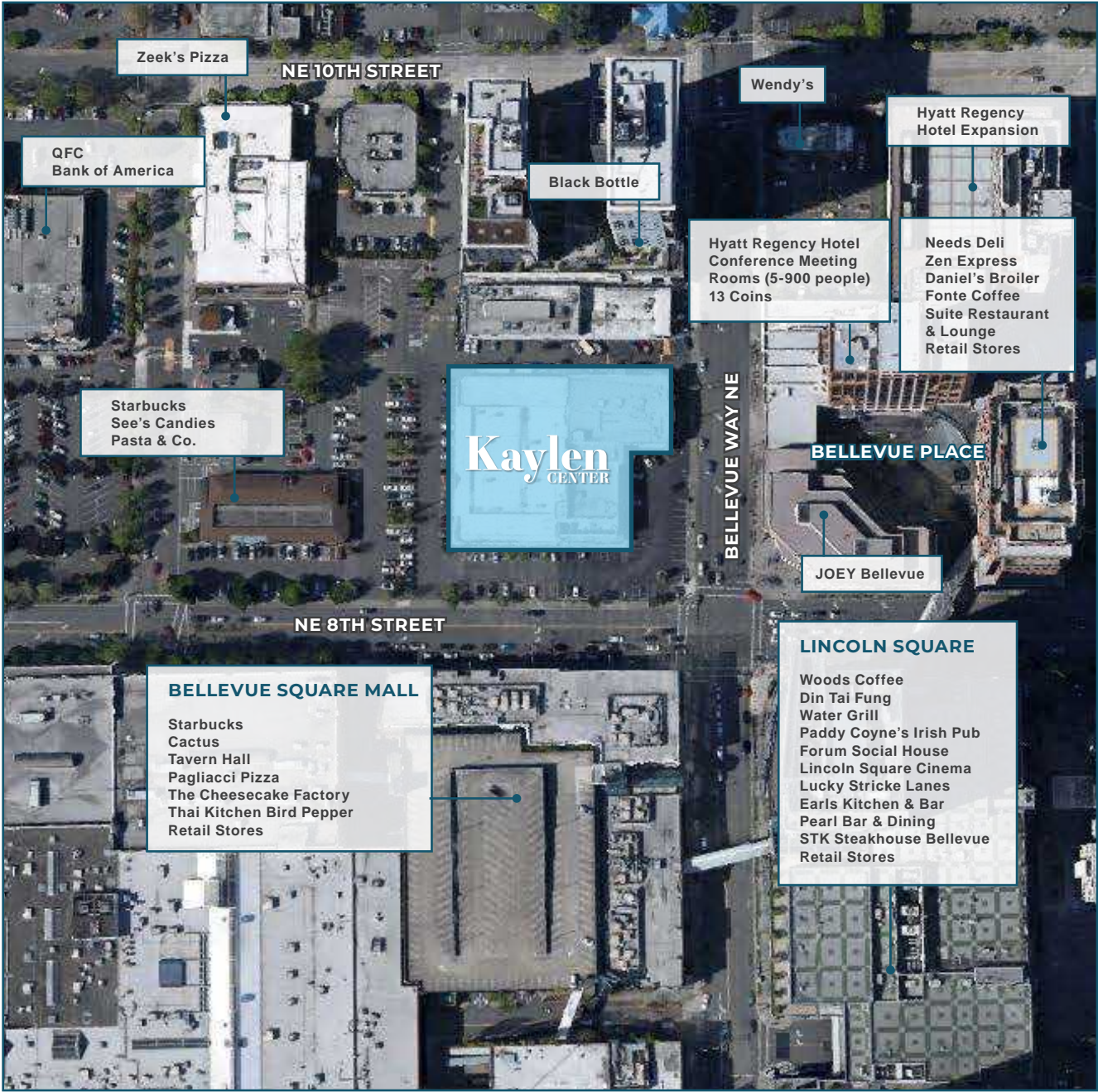
**PAUL SWEENEY**

425.646.5225

[sweeney@broderickgroup.com](mailto:sweeney@broderickgroup.com)



10500 NE 8th Street, Suite 900  
Bellevue, Washington 98004  
main 425.646.3444  
[broderickgroup.com](http://broderickgroup.com)



*The information contained herein has been given to us by the owner or sources that we deem reliable. We have no reason to doubt its accuracy, but we do not guarantee it. Prospective tenants should carefully verify all information contained herein.*

## FLOOR 2 | SUITE 203

APPROX. 4,656 SF

# Kaylen CENTER

821-827 BELLEVUE WAY NE  
BELLEVUE, WASHINGTON

For further information or to schedule a  
tour, please contact:

### CLAYTON HOLM

425.274.4287

[holm@broderickgroup.com](mailto:holm@broderickgroup.com)

### JIM KINERK

425.646.5221

[kinerk@broderickgroup.com](mailto:kinerk@broderickgroup.com)

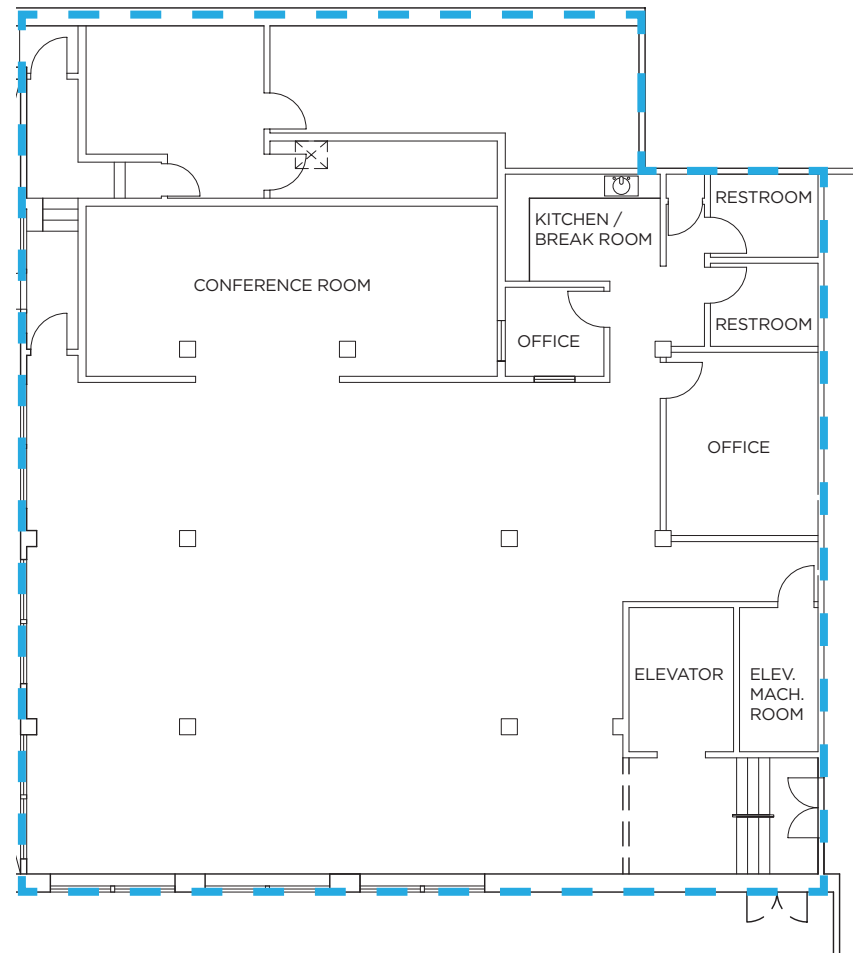
### PAUL SWEENEY

425.646.5225

[sweeney@broderickgroup.com](mailto:sweeney@broderickgroup.com)

**BRODERICK**  
• GROUP •

10500 NE 8th Street, Suite 900  
Bellevue, Washington 98004  
main 425.646.3444  
[broderickgroup.com](http://broderickgroup.com)



*The information contained herein has been given to us by the owner or sources that we deem reliable. We have no reason to doubt its accuracy, but we do not guarantee it. Prospective tenants should carefully verify all information contained herein.*

## FLOOR 2 | SUITE 205

APPROX. 3,128 SF

# Kaylen CENTER

821-827 BELLEVUE WAY NE  
BELLEVUE, WASHINGTON

For further information or to schedule a  
tour, please contact:

### CLAYTON HOLM

425.274.4287

[holm@broderickgroup.com](mailto:holm@broderickgroup.com)

### JIM KINERK

425.646.5221

[kinerk@broderickgroup.com](mailto:kinerk@broderickgroup.com)

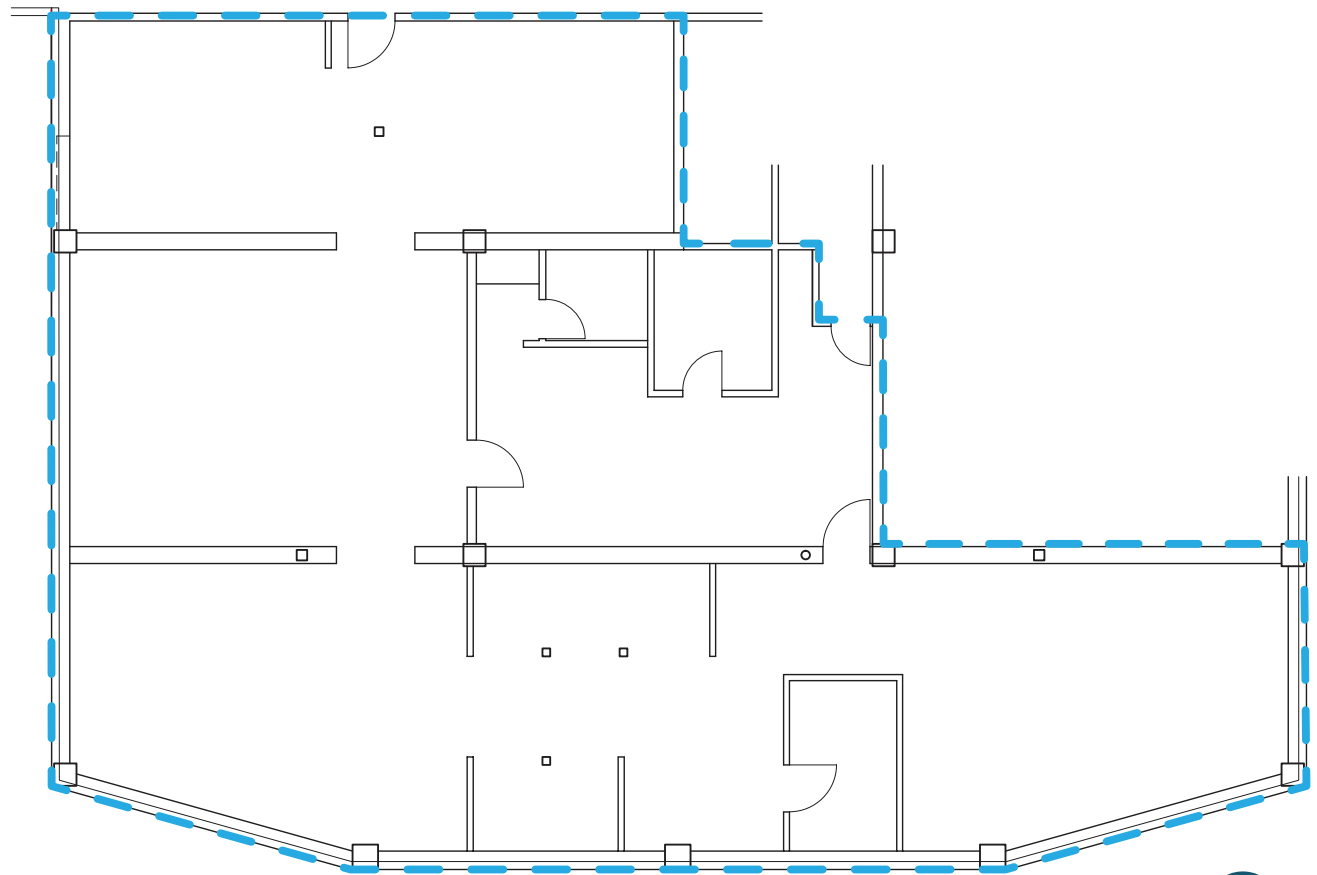
### PAUL SWEENEY

425.646.5225

[sweeney@broderickgroup.com](mailto:sweeney@broderickgroup.com)

**BRODERICK**  
• GROUP •

10500 NE 8th Street, Suite 900  
Bellevue, Washington 98004  
main 425.646.3444  
[broderickgroup.com](http://broderickgroup.com)



*The information contained herein has been given to us by the owner or sources that we deem reliable. We have no reason to doubt its accuracy, but we do not guarantee it. Prospective tenants should carefully verify all information contained herein.*