



1570 Irving Street SW

TUMWATER, WA

FOR LEASE



**ENTIRE THIRD FLOOR
BUILDING**

**Kidder
Mathews**

EVAN PARKER
360.705.0174
evan.parker@kidder.com

This information supplied herein is from sources we deem reliable. It is provided without any representation, warranty, or guarantee, expressed or implied as to its accuracy. Prospective Buyer or Tenant should conduct an independent investigation and verification of all matters deemed to be material, including, but not limited to, statements of income and expenses. Consult your attorney, accountant, or other professional advisor.

FOR LEASE

1570 Irving Street SW

TUMWATER, WA



9,449 SF entire 3rd floor building

THREE conference rooms

TEN private offices

NETWORK room

FULL kitchen breakroom

WORK room

SUBLEASE through December 31, 2025

AVAILABLE now

\$15 PSF annual, modified gross lease agreement

EVAN PARKER
360.705.0174

evan.parker@kidder.com

KIDDER.COM

This information supplied herein is from sources we deem reliable. It is provided without any representation, warranty, or guarantee, expressed or implied as to its accuracy. Prospective Buyer or Tenant should conduct an independent investigation and verification of all matters deemed to be material, including, but not limited to, statements of income and expenses. Consult your attorney, accountant, or other professional advisor.

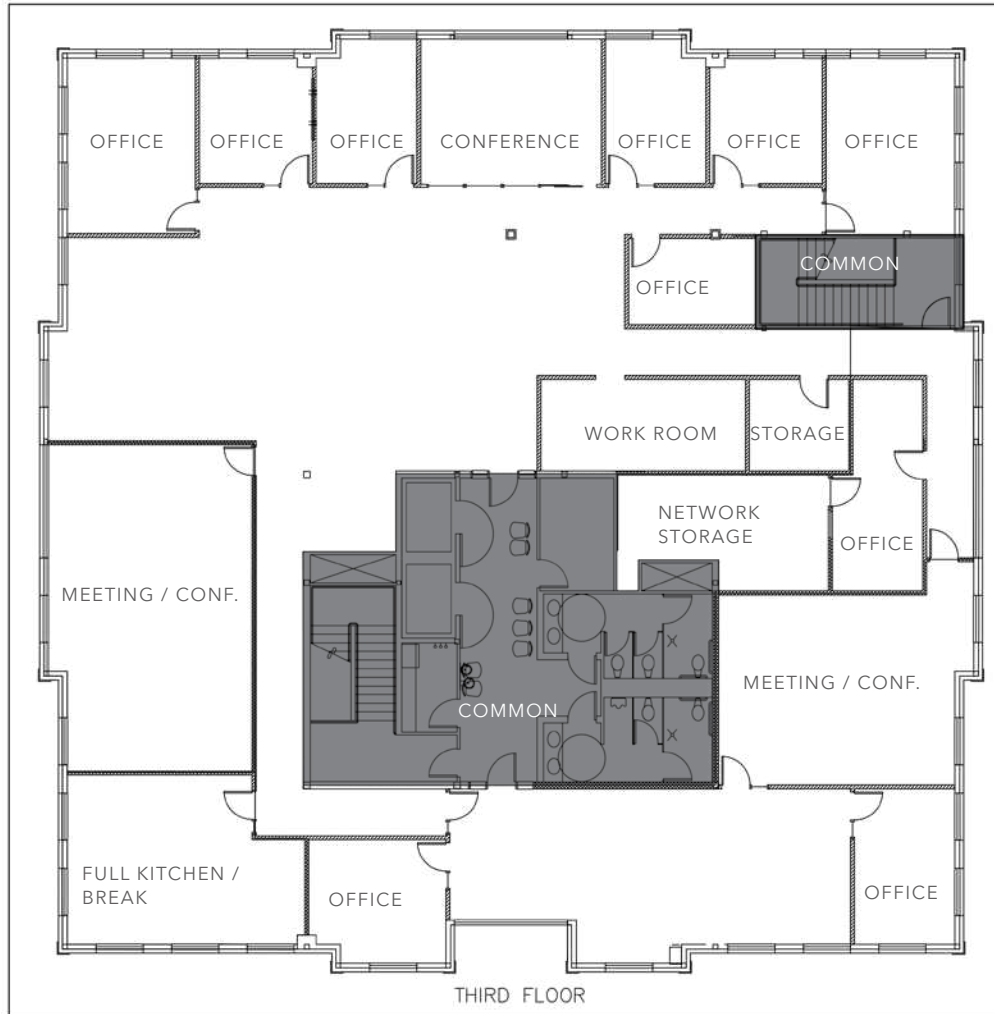
km Kidder Mathews

FOR LEASE

1570 Irving Street SW

TUMWATER, WA

Entire Third Floor



9,449

SQUARE FEET

THREE

CONFERENCE ROOMS

TEN

PRIVATE OFFICES

EVAN PARKER
360.705.0174

evan.parker@kidder.com

KIDDER.COM

This information supplied herein is from sources we deem reliable. It is provided without any representation, warranty, or guarantee, expressed or implied as to its accuracy. Prospective Buyer or Tenant should conduct an independent investigation and verification of all matters deemed to be material, including, but not limited to, statements of income and expenses. Consult your attorney, accountant, or other professional advisor.

km Kidder Mathews