

FOR SUBLEASE

Civica Office Commons South Building

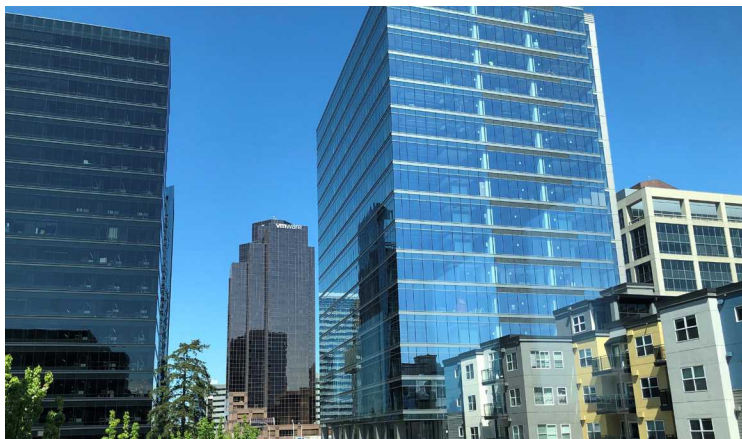
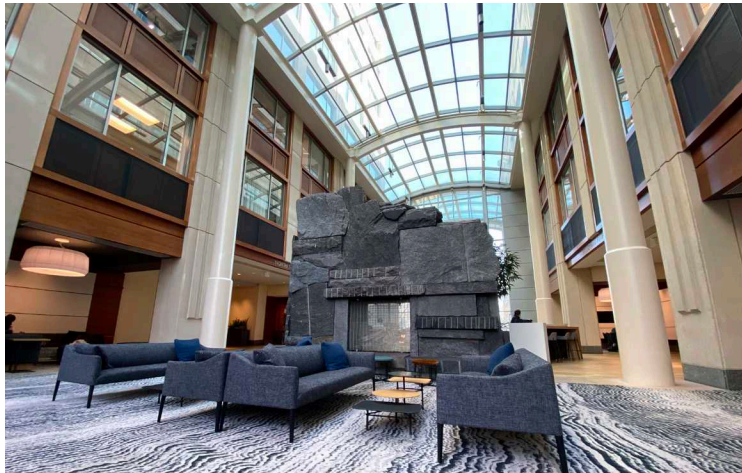
205 108th Ave NE, Bellevue, WA 98004



SOUTH TOWER

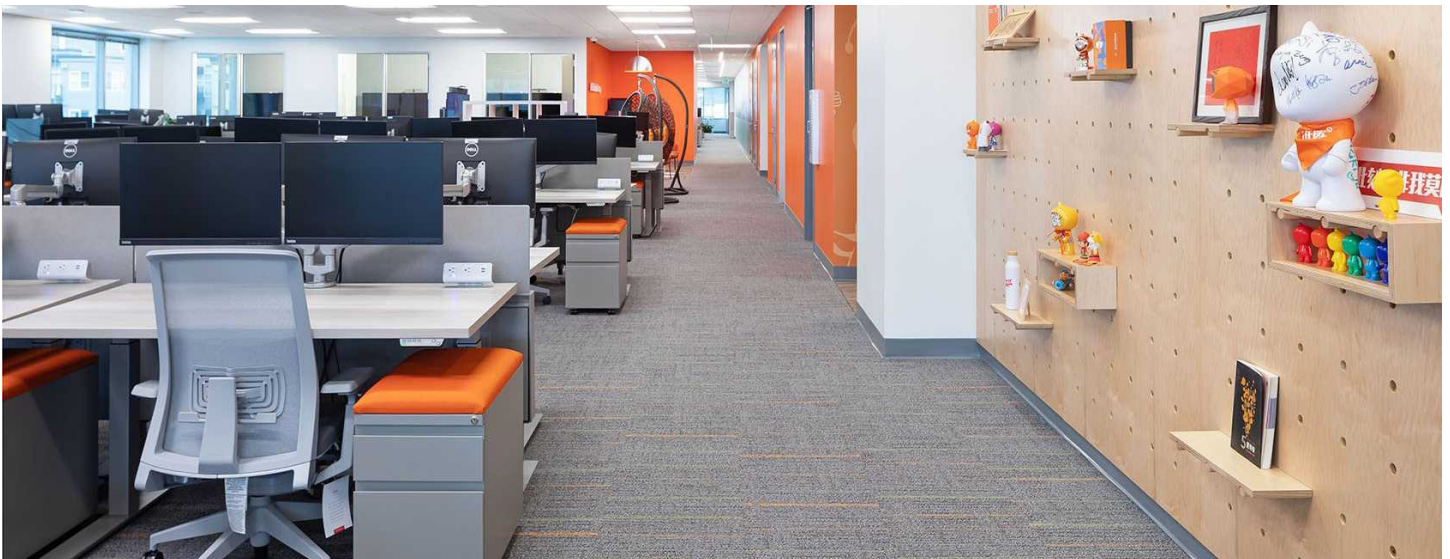
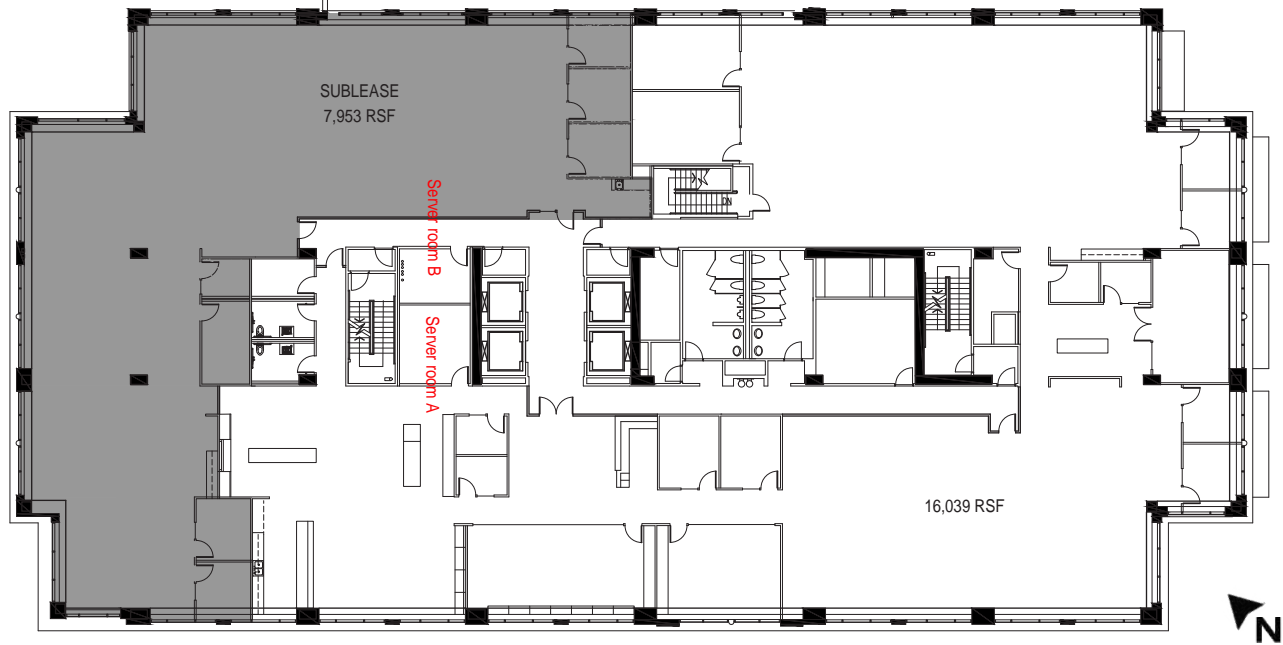
Property Highlights

- Fourth Floor - 7,953 RSF
- Aggressive well below market rate
- Available Immediately
- Tenant improvement allowance available
- Flexible sublease terms available
- On-site Seastar Restaurant & Raw Bar
- Project features include Great Room with concierge service, on-site fitness center and conference room and training facility for large groups
- Close to all downtown Bellevue amenities
- Above standard parking ratio of 3.4 /1,000
- High end plug and play tech space w/ furniture available



South Tower - Available Immediately

Fourth Floor - 7,953 RSF





CIVICA OFFICE COMMONS SOUTH BUILDING

PLEASE CONTACT:

Brian Biege

Senior Vice President
+1 425 462 6914
brian.biege@cbre.com

Jacob Hamlin

Senior Associate
+1 425 462 6930
jacob.hamlin@cbre.com

CBRE, Inc.
929 108th Ave NE
Suite 700
Bellevue, WA 98004

205 108th Ave NE, Bellevue, WA 98004

© 2023 CBRE, Inc. All rights reserved. This information has been obtained from sources believed reliable, but has not been verified for accuracy or completeness. You should conduct a careful, independent investigation of the property and verify all information. Any reliance on this information is solely at your own risk. CBRE and the CBRE logo are service marks of CBRE, Inc. All other marks displayed on this document are the property of their respective owners, and the use of such logos does not imply any affiliation with or endorsement of CBRE. Photos herein are the property of their respective owners. Use of these images without the express written consent of the owner is prohibited. 6-19-23ML