

# Sunset North Corporate Campus

3180 139th Ave SE  
Bellevue, WA 98005  
[www.cbre.com/bellevue](http://www.cbre.com/bellevue)

High-end Plug and Play Sublease - Suite 200: 32,331 RSF



## Sunset North Corporate Campus

3180 139th Ave SE, Bellevue WA 98005



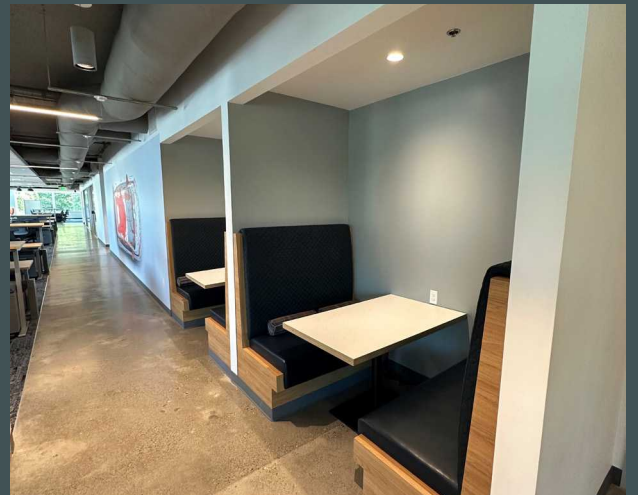
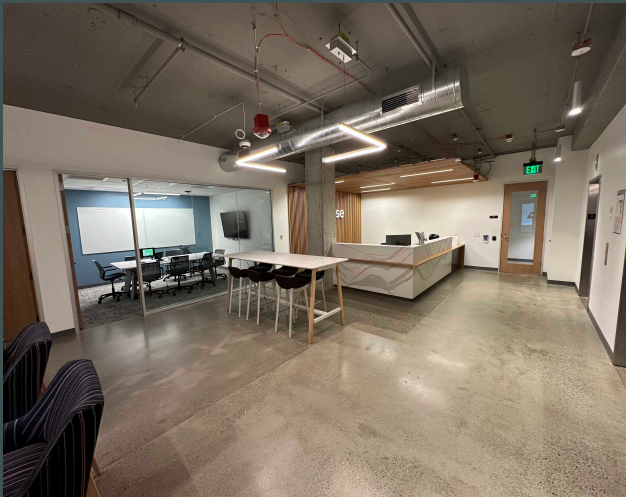
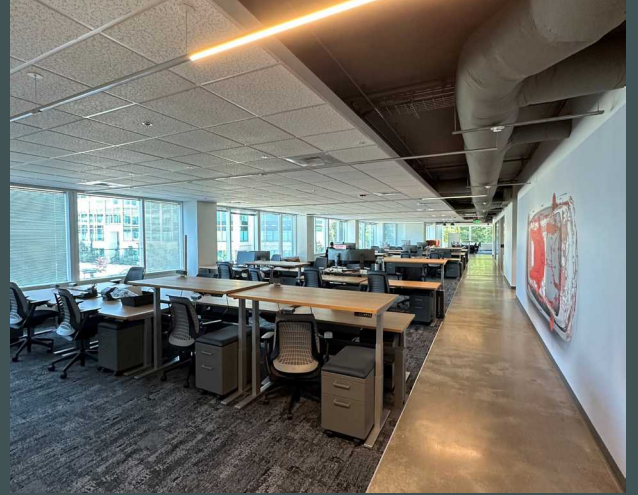
# High-end Plug and Play Sublease

[Click Here for Virtual Tour](#)

- Suite 200: 32,331 RSF
- Available Immediately
- High-end fully furnished tech space
- Large cafeteria with commercial kitchen – great for catering employee lunches and events
- Great mix of open workstations, collaborative space and conference rooms
- Onsite fitness center with showers and lockers
- Walking distance to Park & Ride transit center
- Lease Term: November 30, 2026
- Parking Ratio: 3.8/1,000
- Full floor with 360 territorial views

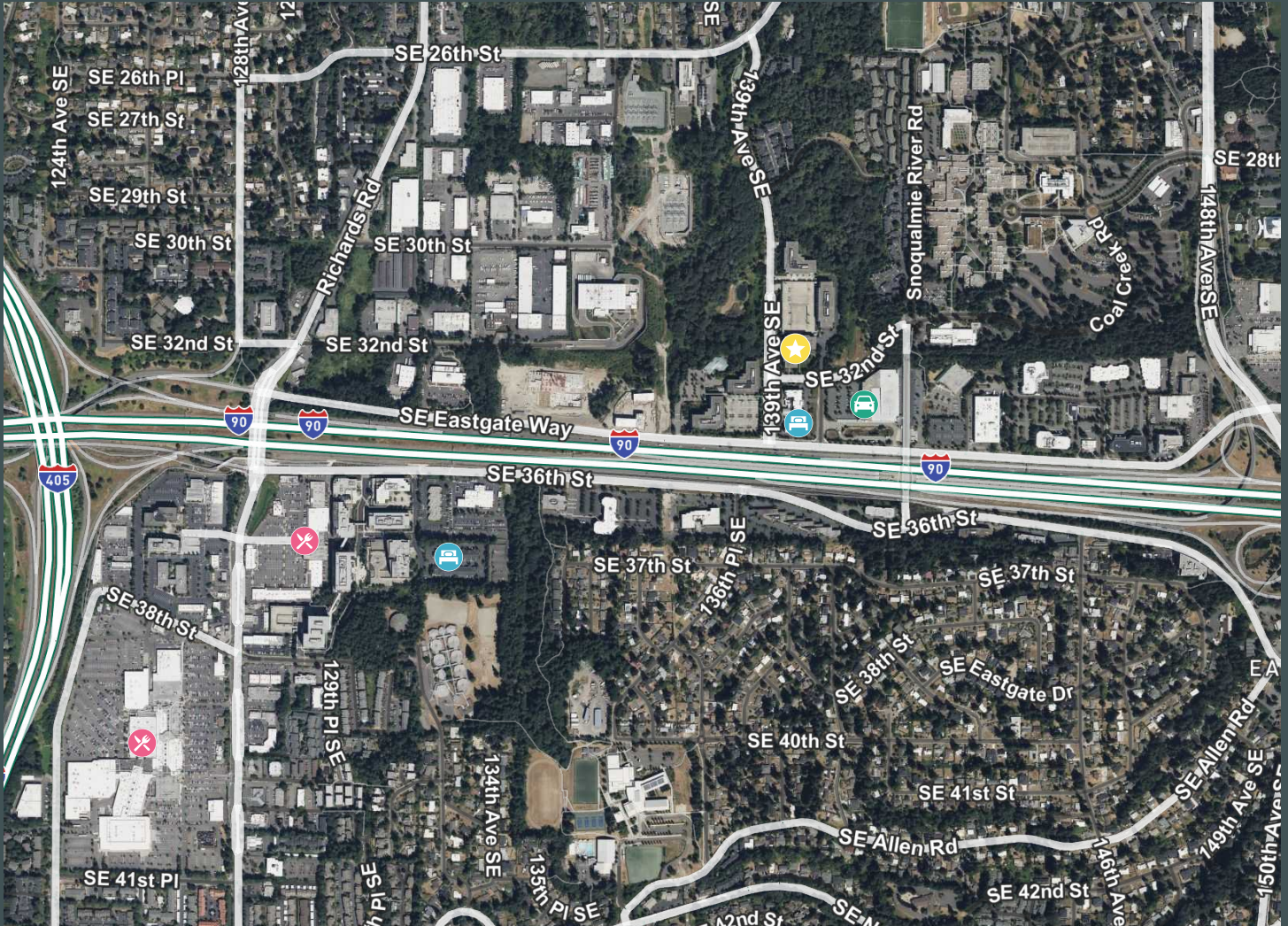


For Sublease





# Map



## Contact Us

**Brian Biege**  
Senior Vice President  
+1 425 462 6914  
Brian.biege@cbre.com

**Bryan Oliver**  
First Vice President  
+1 425 462 6955  
Bryan.oliver@cbre.com

**Jacob Hamlin**  
Senior Associate  
+1 425 319 7252  
Jacob.hamlin@cbre.com

**CBRE Inc.**  
+1 425 455 8500  
929 108th Ave, Suite 700  
Bellevue, WA 98004

© 2023 CBRE, Inc. All rights reserved. This information has been obtained from sources believed reliable, but has not been verified for accuracy or completeness. You should conduct a careful, independent investigation of the property and verify all information. Any reliance on this information is solely at your own risk. CBRE and the CBRE logo are service marks of CBRE, Inc. All other marks displayed on this document are the property of their respective owners, and the use of such logos does not imply any affiliation with or endorsement of CBRE. Photos herein are the property of their respective owners. Use of these images without the express written consent of the owner is prohibited. MAL 7-27-23