



103,191 SF  
Industrial space for lease

Available January 1, 2024

# Cascade Building

14000 24th Street E, Sumner, WA



## Property specifications

- 385,486 SF total
- 103,191 SF available
- 6,032 SF office
- 30' clear height
- 25 dock-high doors
  - 10 doors with hydraulic 40,000 lb. pit levelers with dock seals
- 2 drive-in doors (ramped)
- ESFR sprinklers
- 600-amps 277/480V 3-phase power
- 30' candles at 36" above finished floor warehouse lighting
- Contact brokers for rates

**Scott Carter**  
Managing Director

+1 425 761 5880  
scott.carter@jll.com

**David Cahill**  
Managing Director

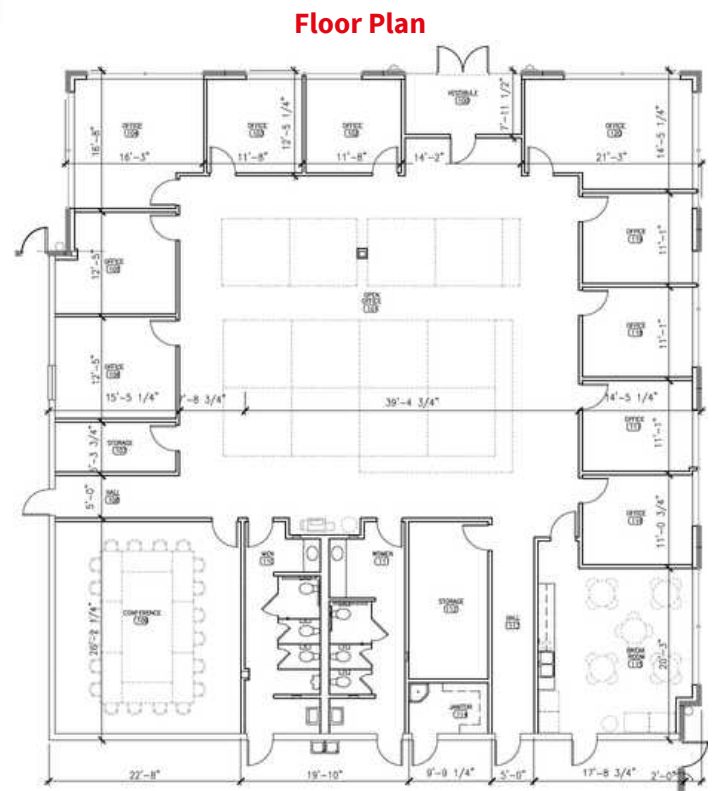
+1 206 930 5599  
david.cahill@jll.com

# 103,191 SF

## Industrial space for lease



Site Plan



Floor Plan

JLL

**Scott Carter**  
Managing Director

1 425 761 5880  
scott.carter@jll.com

**David Cahill**  
Managing Director

1 206 930 5599  
david.cahill@jll.com