

2420
MEDICAL
OFFICE
BUILDING

Recently renovated medical office located in the Allenmore Medical Corridor



PROPERTY
VIDEO



OWNED BY



HEALTHCARE
REALTY

LEASING BY

km Kidder
Mathews

2420
MEDICAL
OFFICE
BUILDING



The 2420 MOB is a recently renovated medical office building in an unbeatable Tacoma location

2420 S Union Ave, Tacoma, WA

AVAILABILITIES

SUITE 200 5,859 SF



2420
MEDICAL
OFFICE
BUILDING

Property Features



RECENT RENOVATIONS

The entire interior of the building has been remodeled, including lobby, ceiling, lighting and common area



UNBEATABLE LOCATION

Located in the Allenmore Medical Corridor & blocks from the Allenmore Hospital Campus



HIGH QUALITY OWNERSHIP

Healthcare Realty is the premier ownership group in the market



ACCESS

Immediate access to Highway 16 and I-5. Direct access to public transportation and eventually the new Light Rail expansion



PARKING

Abundant parking at 5.0/1,000 SF with easy access to and from the building, including structured parking



HEALTHCARE SYNERGY

Join the strongest medical corridor in the South Sound

2420
MEDICAL
OFFICE
BUILDING

Suite 200

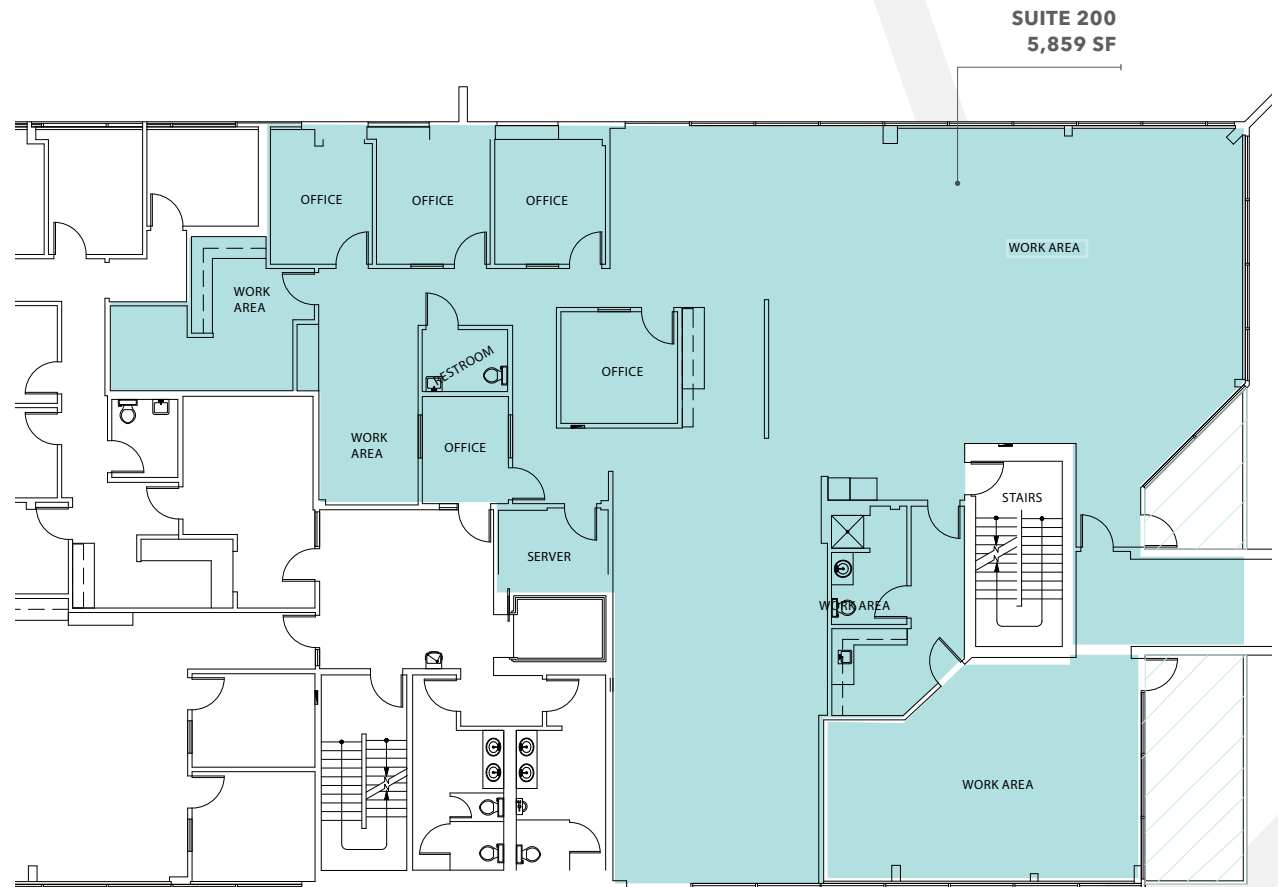
As-Built

SPACE PROGRAM

- 5 PRIVATE OFFICES
- 3 LARGE OPEN WORK AREAS
- 2 IN-SUITE BATHROOMS

+5,859

square feet available



2420
MEDICAL
OFFICE
BUILDING

Suite 200

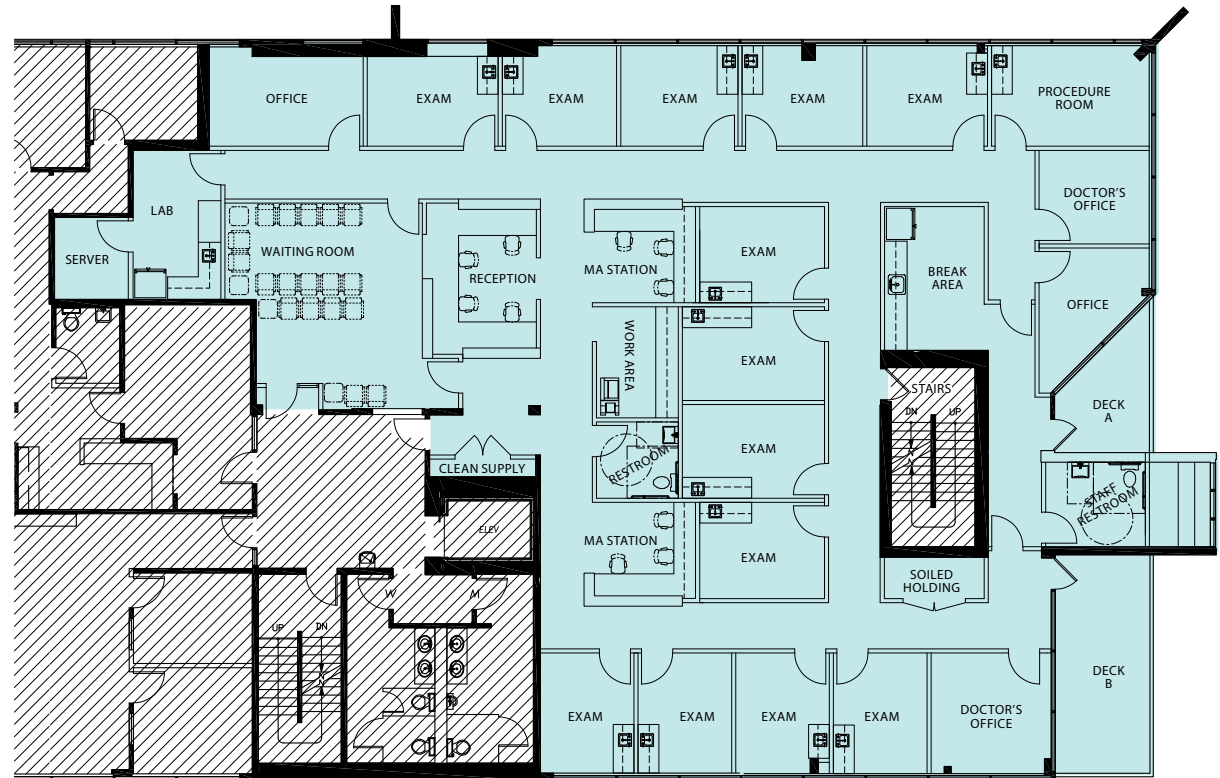
Test Fit

SPACE PROGRAM

- 13 EXAM ROOMS
- 1 PROCEDURE ROOM
- 4 PRIVATE OFFICES
- SPACIOUS RECEPTION AND WAITING ROOM
- 2 MA STATIONS
- 2 IN-SUITE RESTROOMS
- STAFF BREAKROOM WITH PRIVATE DECK ACCESS
- LAB AREA

±5,859

square feet available

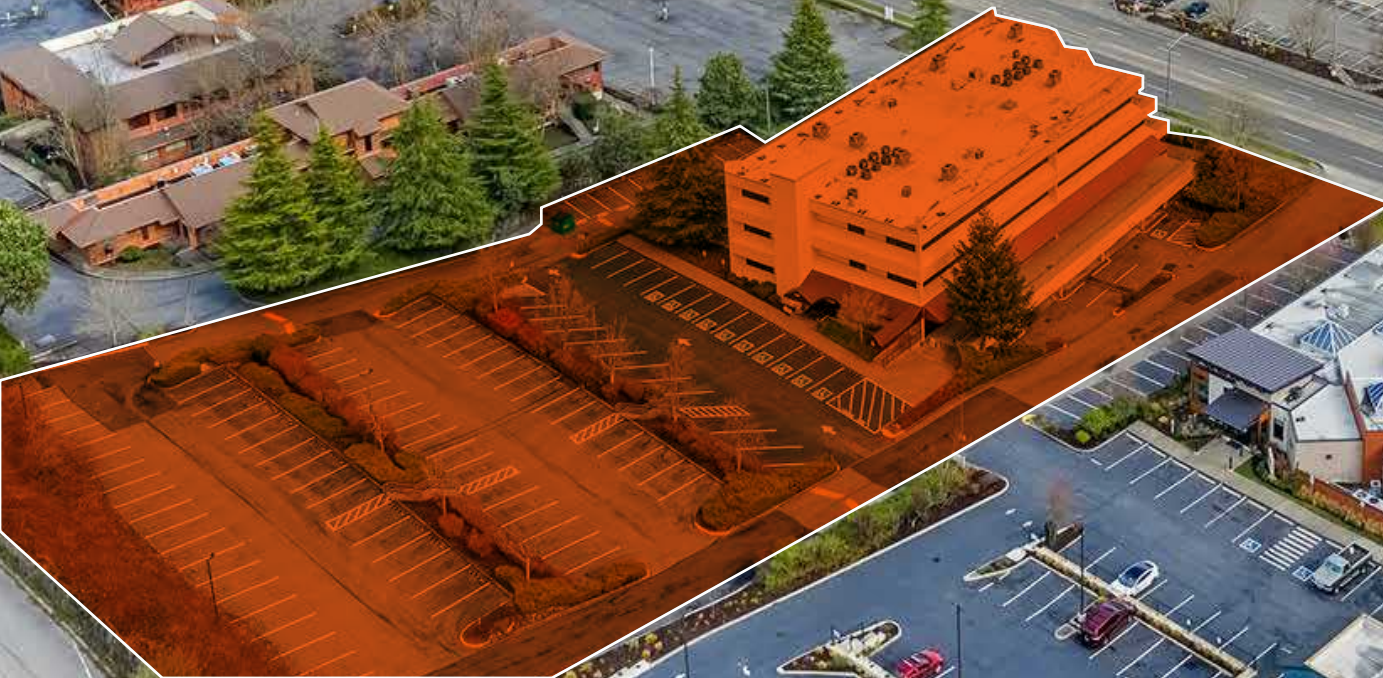


2420
MEDICAL
OFFICE
BUILDING

OWNED BY
HEALTHCARE
REALTY

Unmatched access
for both employees
and patients

ALLENMORE
HOSPITAL



2420
MEDICAL
OFFICE
BUILDING



Brand new interior
renovations



2420 MEDICAL OFFICE BUILDING



The connection
your employees
need and your
patients deserve.

7 min

drive to the Tacoma General Hospital /
Mary Bridge Medical Center

5 min

drive to the St. Joseph Medical Center

5 min

walk to Allenmore Hospital

2 min

drive to Highway 16 / Interstate 5

TACOMA LINK RAIL

- - - Hilltop Tacoma Link Extension (2022)
- - - Tacoma Dome - Theater District (In-Service)
- St Joseph - TCC Planned Extension

2420 MEDICAL OFFICE BUILDING

For additional leasing information, contact

WILL FRAME

Executive Vice President
253.722.1412
will.frame@kidder.com

DREW FRAME

Senior Vice President
253.722.1433
drew.frame@kidder.com

1201 Pacific Avenue
Suite 1400
Tacoma, WA 98402

OWNED BY



**HEALTHCARE
REALTY**

LEASING BY

**km Kidder
Mathews**

This information supplied herein is from sources we deem reliable. It is provided without any representation, warranty, or guarantee, expressed or implied as to its accuracy. Prospective Buyer or Tenant should conduct an independent investigation and verification of all matters deemed to be material, including, but not limited to, statements of income and expenses. Consult your attorney, accountant, or other professional advisor.