

ALLENMORE B  
MEDICAL  
OFFICE  
BUILDING

Recently renovated medical  
office located on the  
Allenmore Hospital Campus



PROPERTY  
VIDEO



OWNED BY

HEALTHCARE  
REALTY

LEASING BY

 **Kidder  
Mathews**

# ALLENMORE B MEDICAL OFFICE BUILDING

The Allenmore B MOB is an on campus renovated medical office building in an unbeatable Tacoma location

1901 S Union Ave, Tacoma, WA

## AVAILABILITIES

SUITE 3003	3,053 SF
SUITE 3005	1,840 SF
SUITE 6001	4,809 SF



ALLENMORE B  
MEDICAL  
OFFICE  
BUILDING

# Property Features



## RECENT RENOVATIONS

The entire interior of the building has been remodeled, including lobby, ceiling, lighting, common area and restrooms



## UNBEATABLE LOCATION

Located on the hospital campus with direct access to the hospital



## HEALTHCARE SYNERGY

The Multicare operated hospital and supporting MOB allows for patient ease and all in one access



## ACCESS

Convenient access to Highway 16 and I-5. Direct access to public transportation and eventually the new Light Rail expansion



## PARKING

Abundant parking at 5.0/1,000 SF with easy access to and from the building



## ON-SITE MANAGEMENT

Healthcare Realty has a full-time on-site management team consistent with their top tier reputation

ALLENMORE B  
MEDICAL  
OFFICE  
BUILDING



Brand new interior renovations



ALLENMORE B  
MEDICAL  
OFFICE  
BUILDING



ALLENMORE B  
MEDICAL  
OFFICE  
BUILDING

## Suite 3003

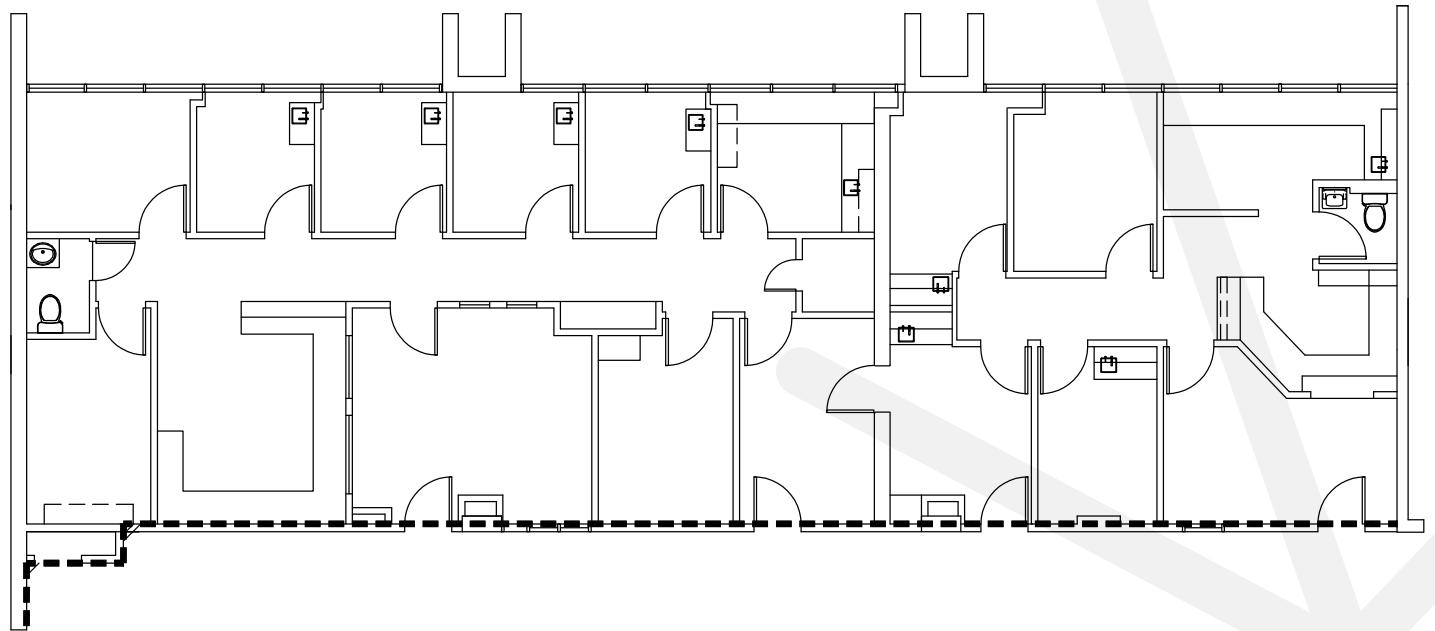
As-Built

### SPACE PROGRAM

- 6 EXAM ROOMS
- SPACIOUS WAITING ROOM
- 2 IN-SUITE RESTROOMS
- 5 OFFICES

**±3,053**

square feet available



ALLENMORE B  
MEDICAL  
OFFICE  
BUILDING

# Suite 3005

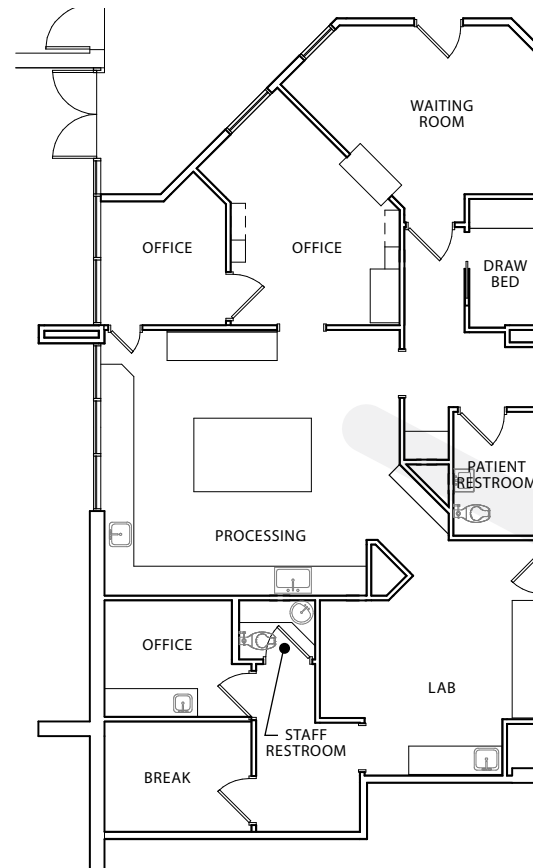
As-Built

## SPACE PROGRAM

- 3 OFFICES
- PROCESSING ROOM
- LAB
- 2 IN-SUITE RESTROOMS

**±1,840**

square feet available



ALLENMORE B  
MEDICAL  
OFFICE  
BUILDING

## Suite 6001

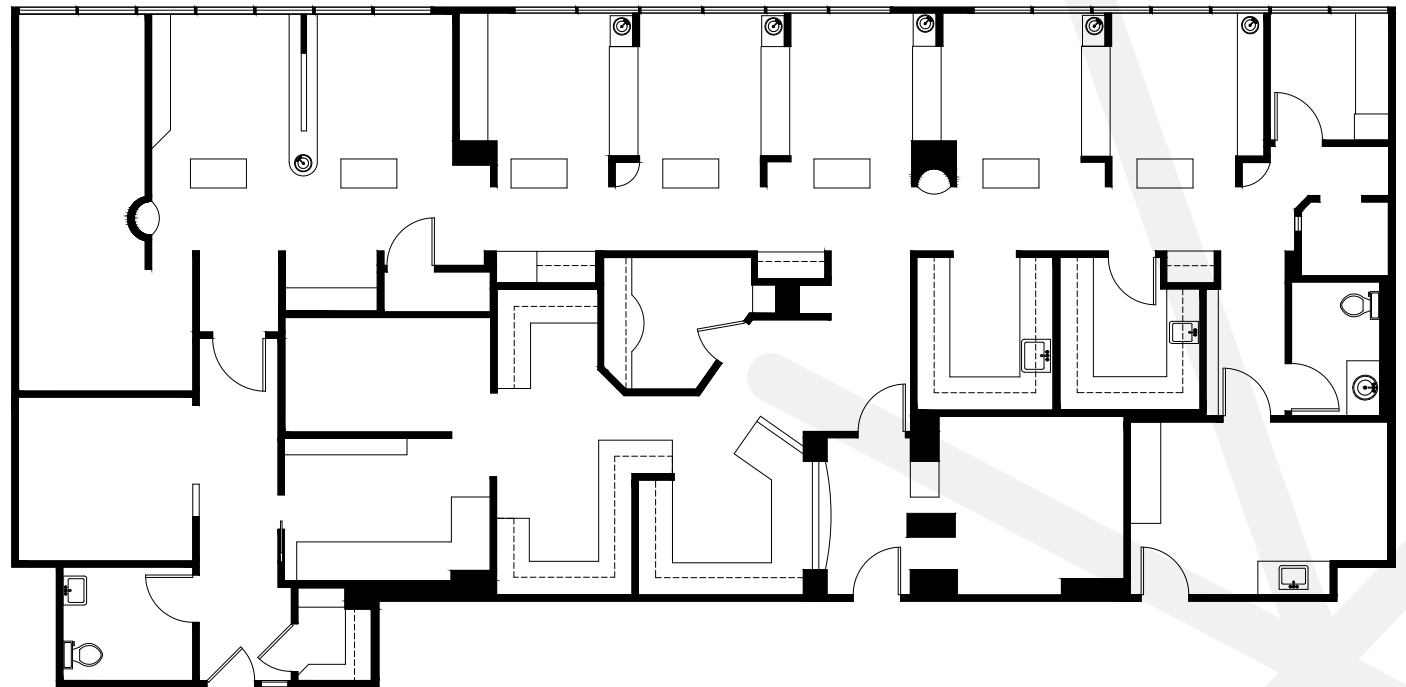
As-Built

### SPACE PROGRAM

- SPACIOUS RECEPTION AND WAITING ROOM
- 7 DENTAL TREATMENT ROOMS
- 2 IN-SUITE BATHROOMS

## 4,809 SF

square feet available





# ALLENMORE B MEDICAL OFFICE BUILDING

## Suite 6001

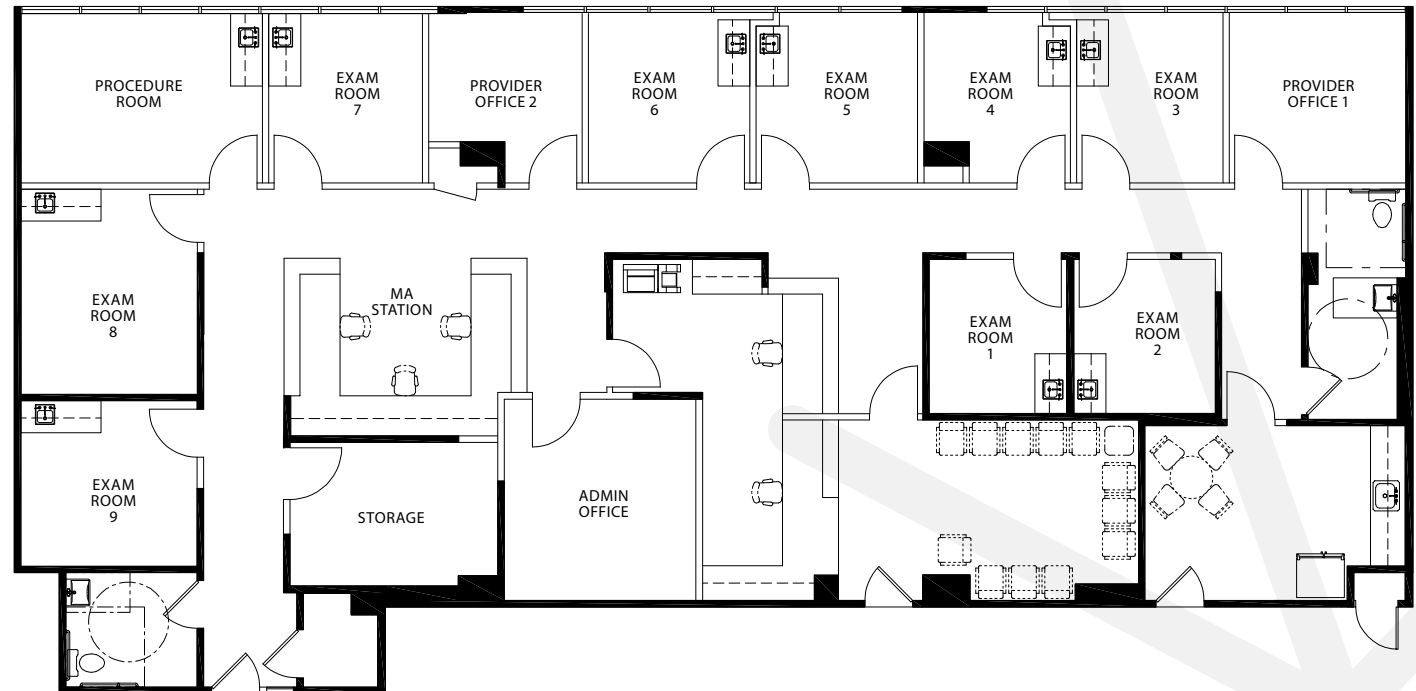
### Test Fit

#### SPACE PROGRAM

- SPACIOUS RECEPTION AND WAITING ROOM
- 9 EXAM ROOMS
- 1 LARGE PROCEDURE ROOM
- LARGE ADMIN ROOM
- 2 PROVIDER OFFICES
- 2 IN-SUITE RESTROOMS
- MA STATION
- STAFF BREAKROOM
- LARGE STORAGE ROOM

**±4,809**

square feet available



ALLENMORE B  
MEDICAL  
OFFICE  
BUILDING

MultiCare Tacoma General Hospital/ Mary Bridge Medical Center

ALLENMORE B  
MEDICAL OFFICE  
BUILDING

St Joseph

Allenmore

TACOMA LINK RAIL

- o- Hilltop Tacoma Link Extension (2022)
- o- Tacoma Dome - Theater District (In-Service)
- St Joseph - TCC Extension (2039)

The connection  
your employees  
need and your  
patients deserve.

**5 min**

drive to the Tacoma General Hospital / Mary Bridge Medical Center

**5 min**

drive to the St. Joseph Medical Center

**5 min**

drive to Downtown Tacoma

**5 min**

drive to Highway 705 / Interstate 5

# ALLENMORE B MEDICAL OFFICE BUILDING

For additional leasing information, contact

## WILL FRAME

Executive Vice President  
253.722.1412  
will.frame@kidder.com

## DREW FRAME

Senior Vice President  
253.722.1433

1201 Pacific Avenue  
Suite 1400  
Tacoma, WA 98402



OWNED BY

**HEALTHCARE  
REALTY**

LEASING BY

**km Kidder  
Mathews**