

Class A Tech Space for *sublease* Horizon Pacific Center

2106 Pacific Avenue | Tacoma, WA

Space Highlights

- Suite 401: 6,262 RSF
- Suite 500/502: 6,072 RSF
- High-end, modern, plug & play sublease surrounded by the amenities of the Brewery Blocks development
- Sublease expiration August 31, 2028; Sublandlord willing to consider a term of 12/24/36 months
- Excellent access to I-705 and I-5 and one block from the Sounder Transit Link Light Rail
- Above standard parking ratio of 3:1,000 RSF



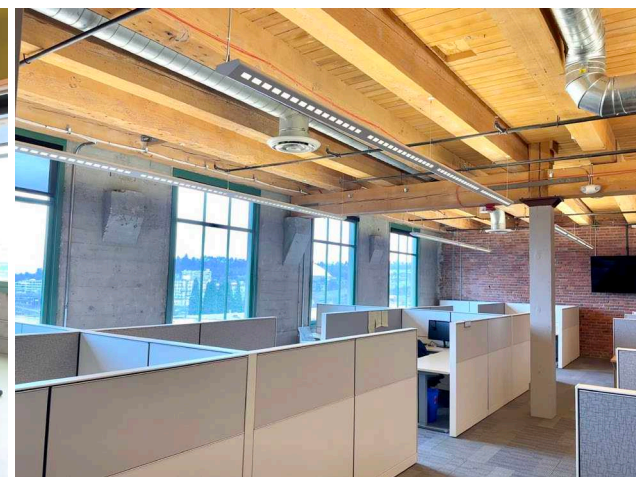
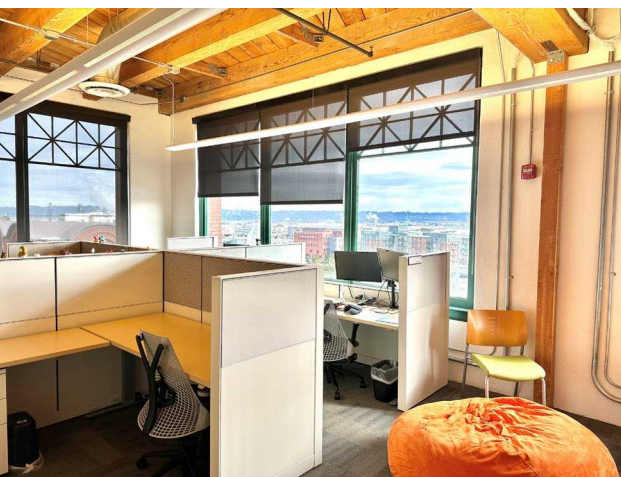
Fully furnished
plug & play



Work in style
high end creative space



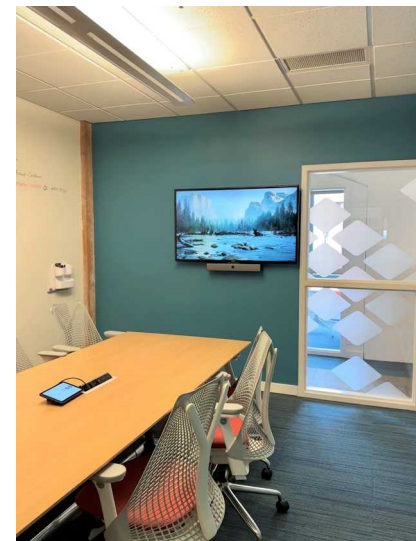
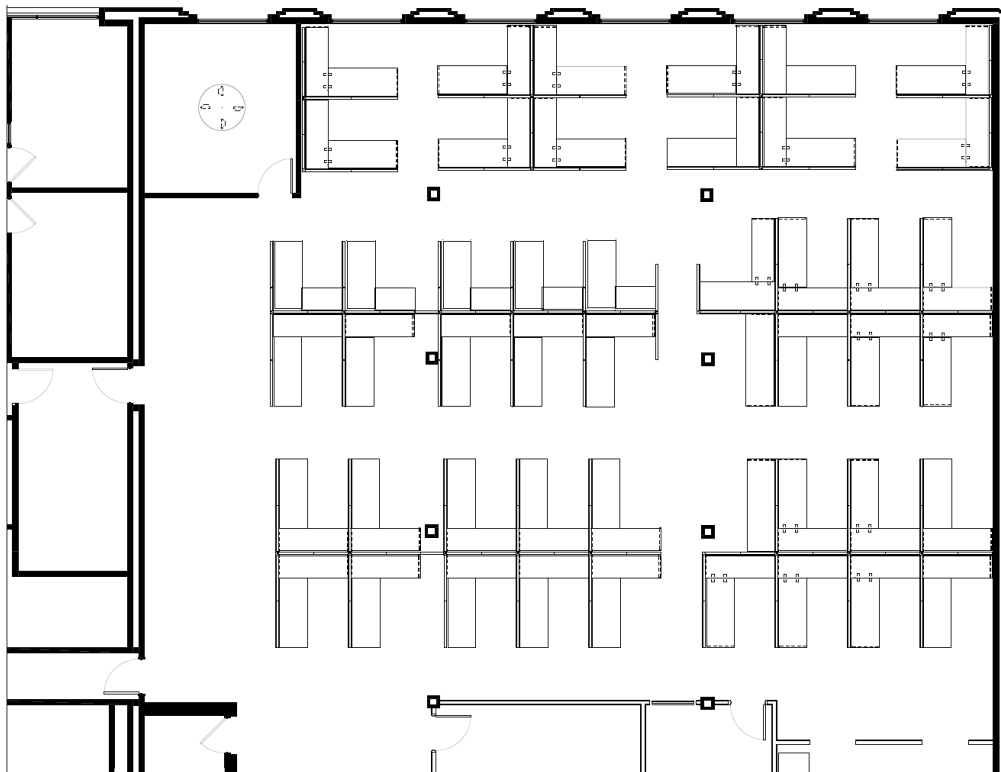
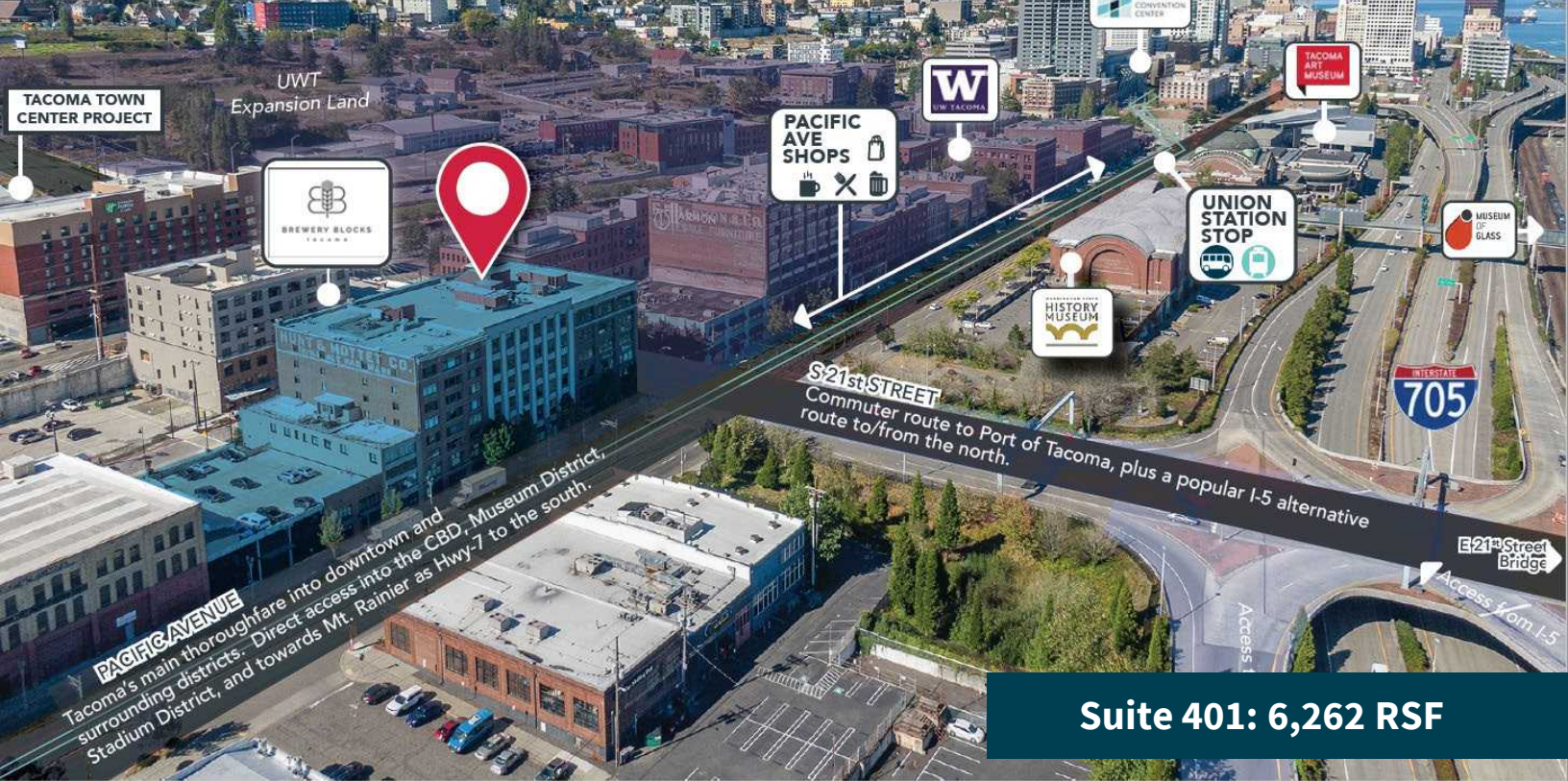
Natural light
and tall exposed ceilings



Mark To
+1 206 387-3047
Mark.To@jll.com

Harrison Laird
+1 206 947-1594
Hlaird@lee-associates.com

Although information has been obtained from sources deemed reliable, Owner, Jones Lang LaSalle, and/or their representatives, brokers or agents make no guarantees as to the accuracy of the information contained herein, and offer the Property without express or implied warranties of any kind. The Property may be withdrawn without notice. If the recipient of this information has signed a confidentiality agreement regarding this matter, this information is subject to the terms of that agreement. ©2023. Jones Lang LaSalle. All rights reserved.

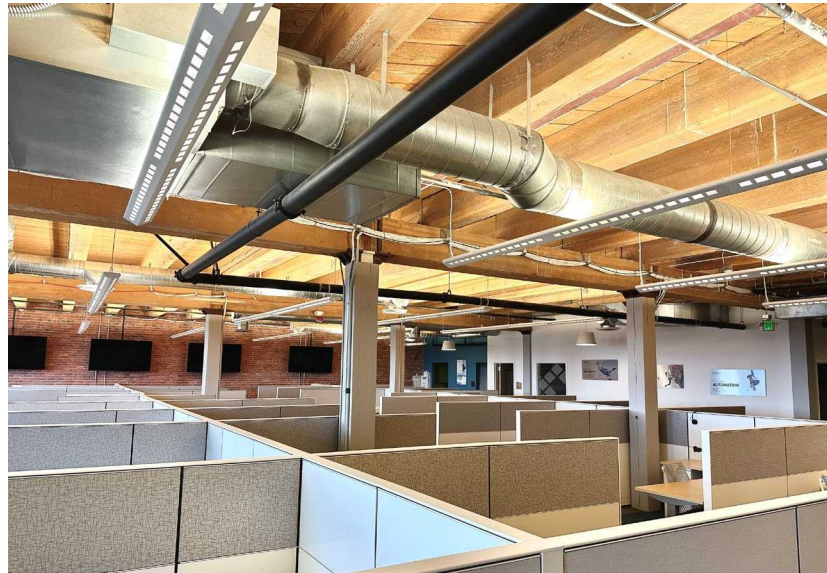
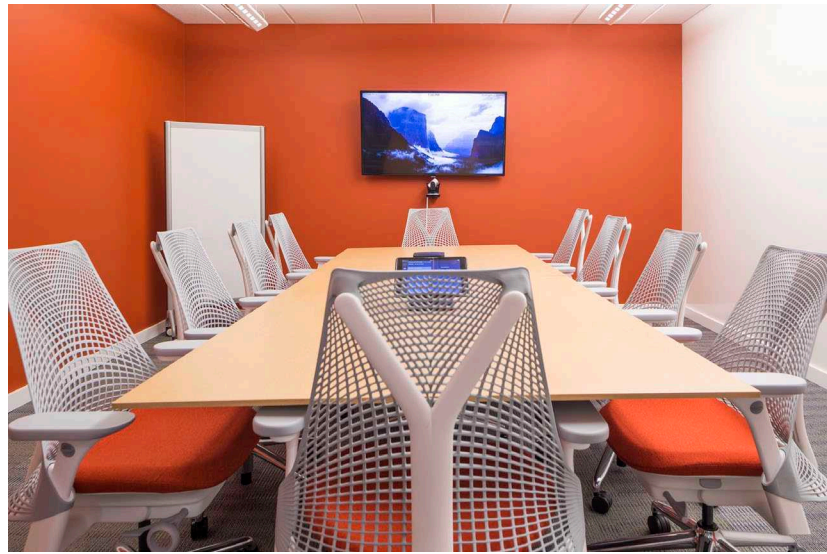
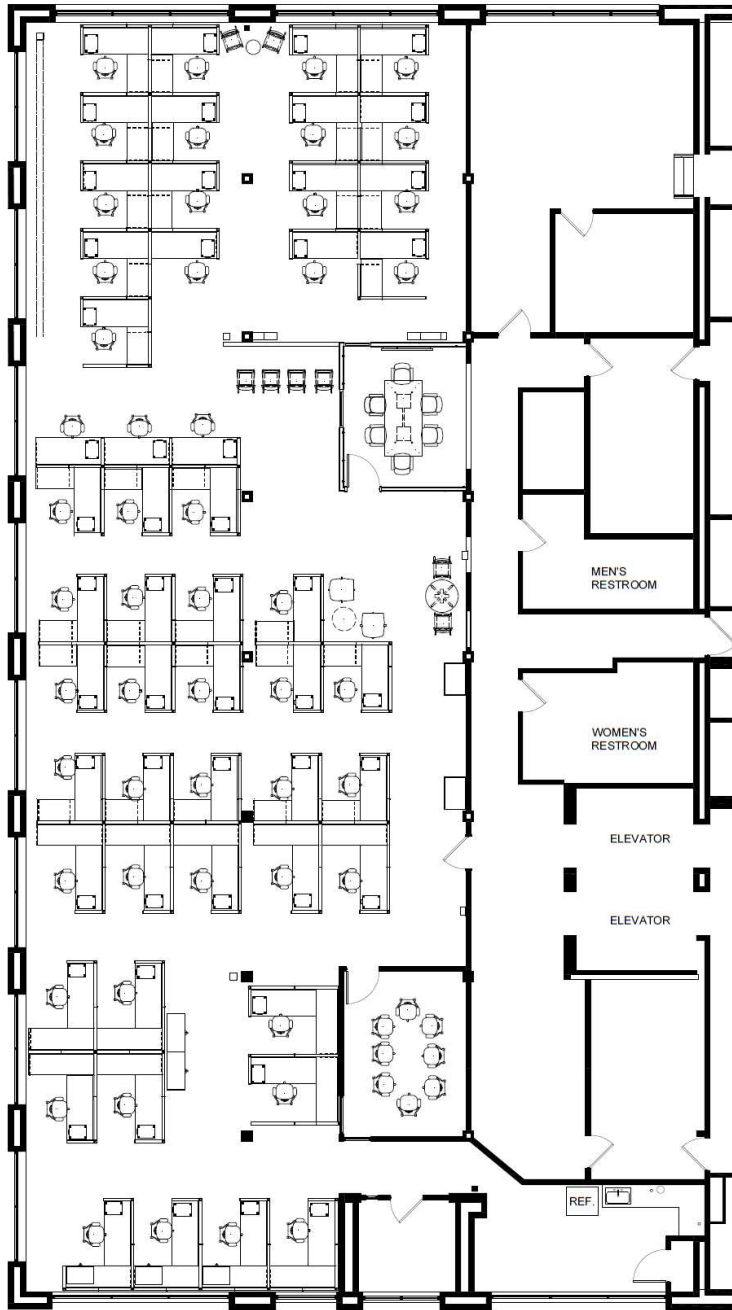


Mark To
+1 206 387-3047
Mark.To@jll.com

Harrison Laird
+1 206 947-1594
Hlaird@lee-associates.com

Horizon Pacific Center For Sublease

Suite 500/502: 6,072 RSF



Mark To

+1 206 387-3047

Mark.To@jll.com

Harrison Laird

+1 206 947-1594

Hlaird@lee-associates.com