



501

EASTLAKE

Seattle, Washington

NEWMARK

LINCOLN
PROPERTY
COMPANY

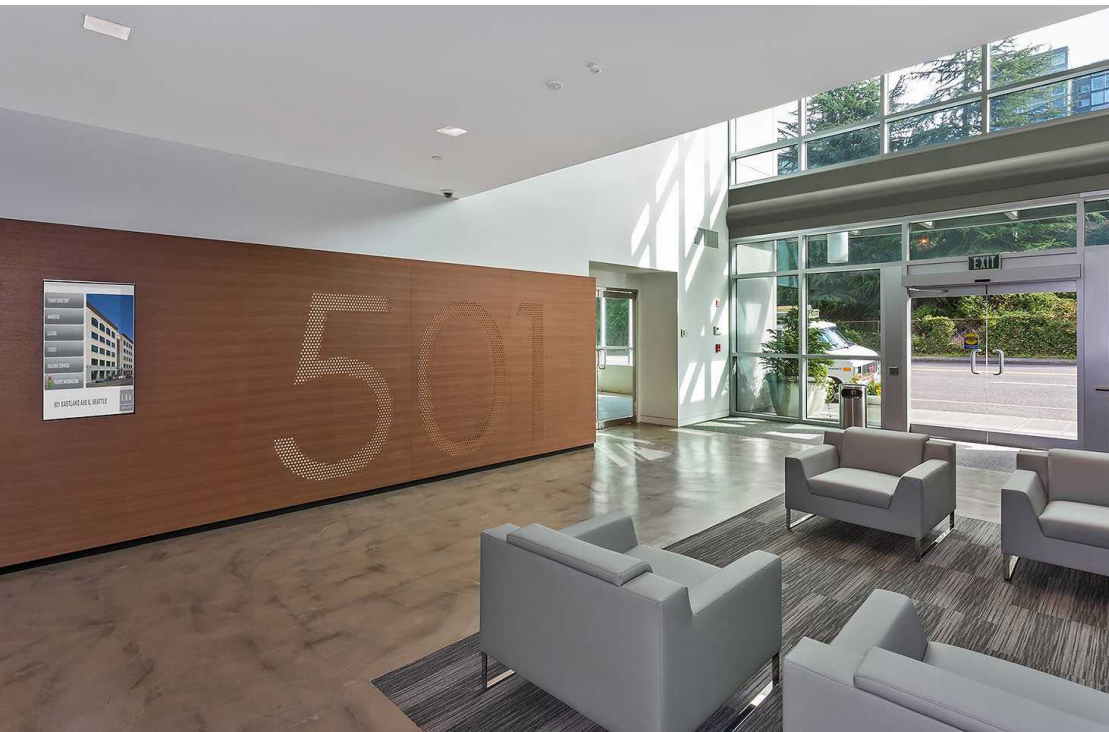
CAVAN O'KEEFE
206.395.2903
cavan.okeefe@nmrk.com

DANIEL SEGER
206.487.5163
daniel.seger@nmrk.com

BUILDING HIGHLIGHTS

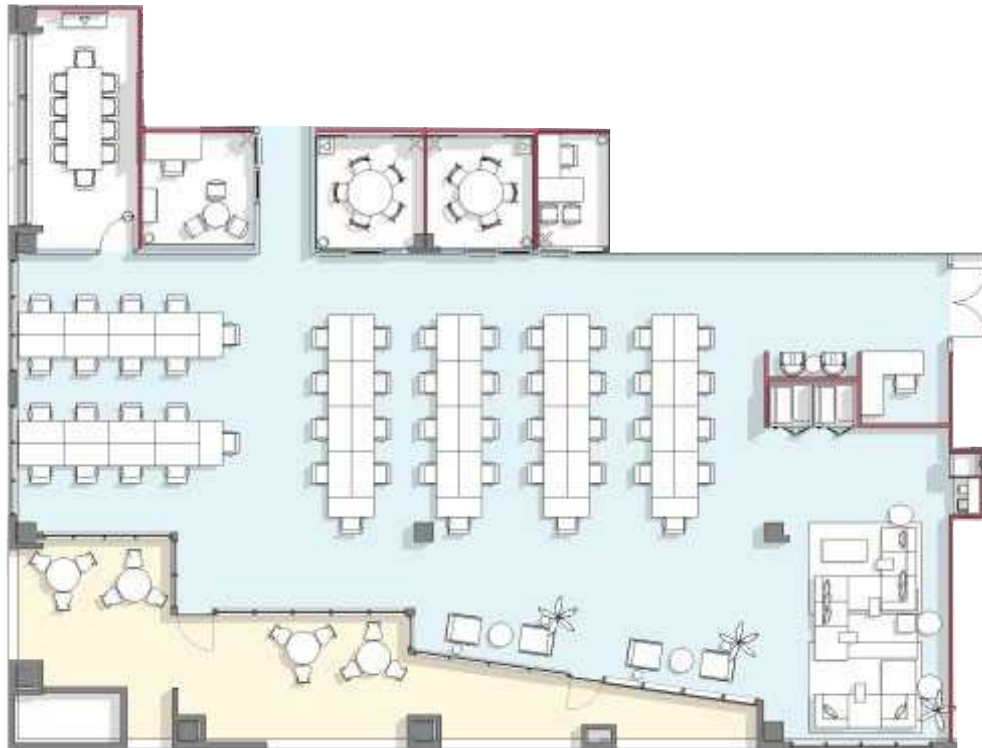
Newly constructed (2002) building located in the Vibrant South Lake Union neighborhood with excellent views, efficient floorplates and desirable underground parking

- Live, Work, Play environment with abundant walkable amenities
- Convenient access to I-5, SR 520, I-90 and Hwy 99
- 9' finished ceiling height, 12' slab to slab
- Exterior building signage opportunity with freeway visibility
- Automated entry (parking and building) and elevator access card system
- Owned and managed by a partnership of Lincoln Property Company



BUILDING FACTS

Building Address	501 Eastlake Ave E, Seattle, WA
Building Size	103,494 RSF
Floors	5
Power	3,000 amps of 480V, 3 phase power serving major building systems
Number of elevators	3
Parking ratio	1.7 per 1,000 RSF



Private Entry off Eastlake Ave

Entrance to
Building Lobby



FLOORPLAN

AVAILABILITY

FLOOR 1 | SUITE 101

5,065 SF

Available Now



501

EASTLAKE

Seattle, Washington



NEWMARK

LINCOLN
PROPERTY
COMPANY

CAVAN O'KEEFE
206.395.2903
cavan.okeefe@nrmk.com

DANIEL SEGER
206.487.5163
daniel.seger@nrmk.com

The distributor of this communication is performing acts for which a real estate license is required. The information contained herein has been obtained from sources deemed reliable but has not been verified and no guarantee, warranty or representation, either express or implied, is made with respect to such information. Terms of sale or lease and availability are subject to change or withdrawal without notice.