



FOR LEASE

# Time Square

500-800 SW 39TH STREET, RENTON, WA



**Kidder  
Mathews**

This information supplied herein is from sources we deem reliable. It is provided without any representation, warranty, or guarantee, expressed or implied as to its accuracy. Prospective Buyer or Tenant should conduct an independent investigation and verification of all matters deemed to be material, including, but not limited to, statements of income and expenses. Consult your attorney, accountant, or other professional advisor.

[RENTONOFFICEPARK.COM](http://RENTONOFFICEPARK.COM) | [KIDDER.COM](http://KIDDER.COM)

FOR LEASE

# Time Square

500-800 SW 39TH STREET, RENTON, WA



## BUILDING AVAILABLE SPACE

Bldg	Suite	SF	Floor	Notes
600	100C	4,565	1	Plug & play (all furniture available)
600	200	10,460	2	Available 9/1/24
600	250	7,272	2	Available 2/1/24
660	245	3,104	2	Abundant glass-line, quality build-out
660	215/225/245	11,143	2	Abundant glass-line, quality build-out
660	215	5,195	2	Plug & play (all furniture available) (can combine suite 215 & 225 for 8,039 SF)
660	225	2,844	2	Abundant glass-line, quality build-out
700	100/110	46,952	1	Can deliver entire floor, available 6/1/2024
700	1st & 2nd	95,992	1 & 2	Can deliver entire building, available 6/1/2024
700	2nd	49,040	2	Can deliver entire floor (divisible to approximately 3,000 RSF). <a href="#">Click for Virtual Tour</a>
800	2nd	30,977	2	Can deliver entire floor (divisible to approximately 6,600 RSF) available 6/1/2023

RENTONOFFICEPARK.COM | KIDDER.COM

This information supplied herein is from sources we deem reliable. It is provided without any representation, warranty, or guarantee, expressed or implied as to its accuracy. Prospective Buyer or Tenant should conduct an independent investigation and verification of all matters deemed to be material, including, but not limited to, statements of income and expenses. Consult your attorney, accountant, or other professional advisor.

Time Square offers companies a Class A suburban office campus environment

Lobbies recently updated with new finishes, furniture and artwork

Outstanding freeway access to I-405, SR-167 and minutes from I-5

Convenient location puts you 10 minutes from SeaTac Airport and 20 minutes from downtown Bellevue and Seattle

A parking ratio of over 4/1,000 SF to accommodate all of your parking needs

On-site amenities include a fitness center with locker rooms, showers and the latest equipment, a conference center with the capacity for 50 people and state of the art audio visual capabilities, restaurant quality dining in the cafe with both indoor and outdoor seating, as well as catering capabilities to accommodate in-office functions



**FOR LEASE**

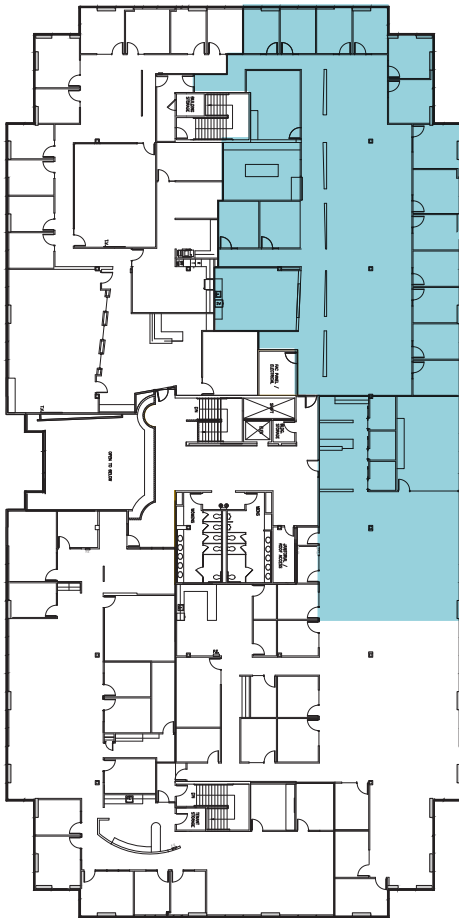
# Time Square

500-800 SW 39TH STREET, RENTON, WA

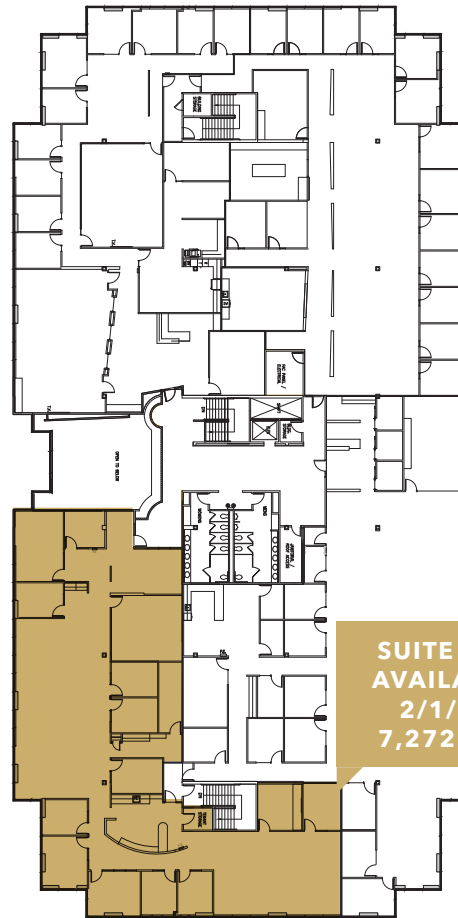
## Floor Plans

**BUILDING 600 / SUITE 200 - 2ND FLOOR**

**BUILDING 600 / SUITE 250 - 2ND FLOOR**



**SUITE 200  
AVAILABLE  
9/1/24  
10,460 RSF**



**SUITE 250  
AVAILABLE  
2/1/24  
7,272 RSF**

**10,460 RSF**

**SUITE 200**

**7,272 RSF**

**SUITE 250**

**BRIAN CLAPP**  
206.248.7316  
brian.clapp@kidder.com

**SPENCER CLAPP**  
206.248.7427  
spencer.clapp@kidder.com

[RENTONOFFICEPARK.COM](http://RENTONOFFICEPARK.COM) | [KIDDER.COM](http://KIDDER.COM)

This information supplied herein is from sources we deem reliable. It is provided without any representation, warranty, or guarantee, expressed or implied as to its accuracy. Prospective Buyer or Tenant should conduct an independent investigation and verification of all matters deemed to be material, including, but not limited to, statements of income and expenses. Consult your attorney, accountant, or other professional advisor.



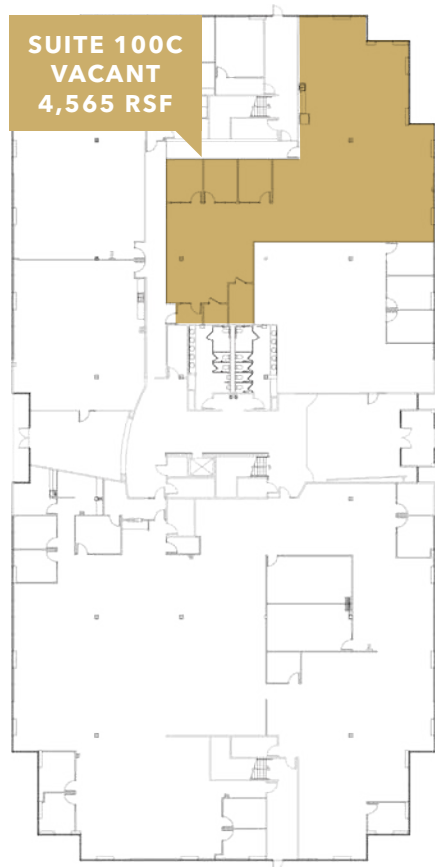
**FOR LEASE**

# Time Square

500-800 SW 39TH STREET, RENTON, WA

## Floor Plans

**BUILDING 600 / SUITE 100C - 1ST FLOOR**



# 4,565 RSF

**SUITE 100C (PLUG & PLAY)**

**BRIAN CLAPP**  
206.248.7316  
[brian.clapp@kidder.com](mailto:brian.clapp@kidder.com)

**SPENCER CLAPP**  
206.248.7427  
[spencer.clapp@kidder.com](mailto:spencer.clapp@kidder.com)

[RENTONOFFICEPARK.COM](http://RENTONOFFICEPARK.COM) | [KIDDER.COM](http://KIDDER.COM)

This information supplied herein is from sources we deem reliable. It is provided without any representation, warranty, or guarantee, expressed or implied as to its accuracy. Prospective Buyer or Tenant should conduct an independent investigation and verification of all matters deemed to be material, including, but not limited to, statements of income and expenses. Consult your attorney, accountant, or other professional advisor.



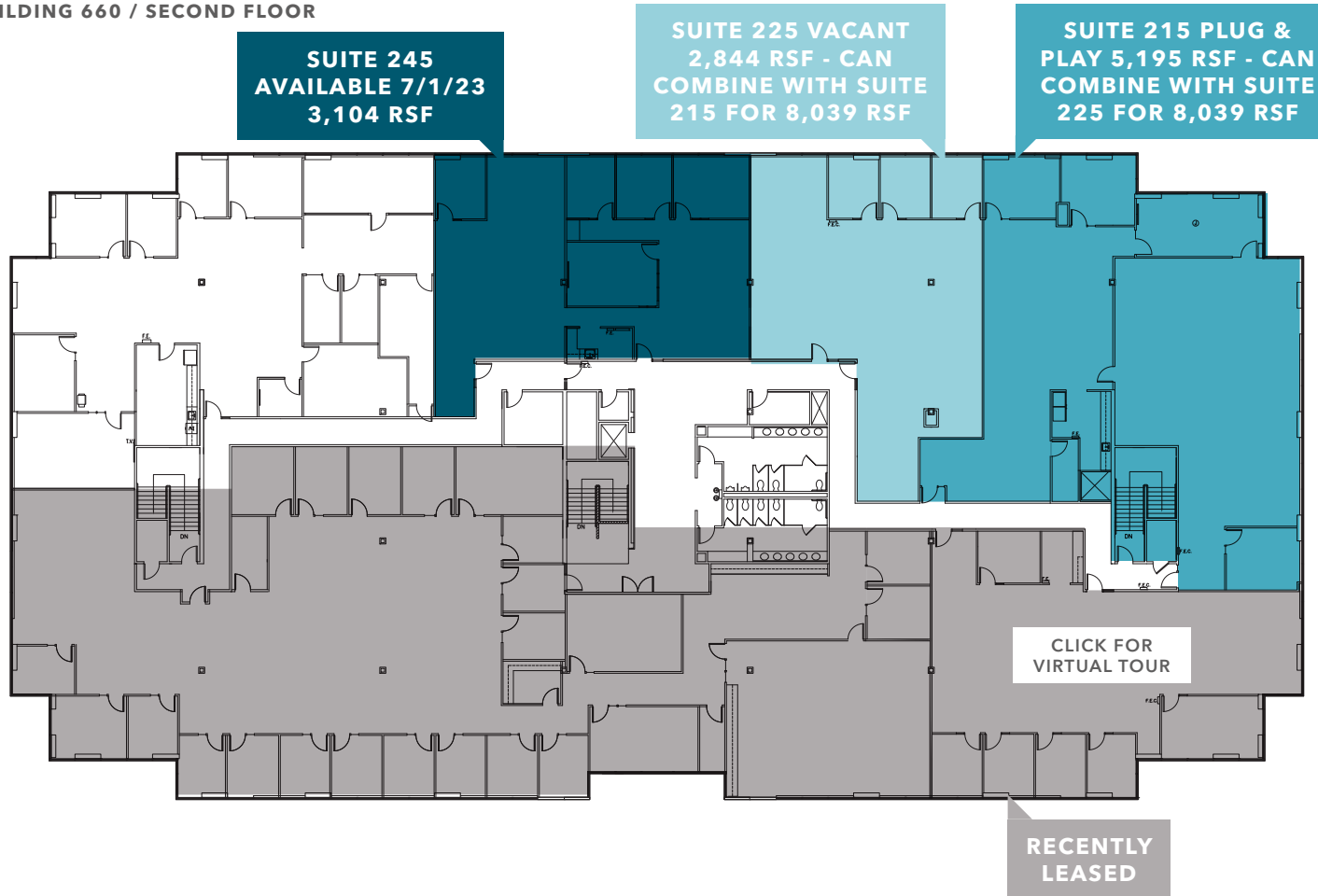
**FOR LEASE**

# Time Square

500-800 SW 39TH STREET, RENTON, WA

## Floor Plans

**BUILDING 660 / SECOND FLOOR**



**LEASED**

SUITE 200

**LEASED**

SUITE 205 (AVAILABLE FOR FUTURE  
EXPANSION OF SUITE 200)

**5,195 RSF**

SUITE 215 (PLUG & PLAY)

**2,844 RSF**

SUITE 225

**8,039 RSF**

CAN COMBINE SUITE 215 & 225

**3,104 RSF**

SUITE 245

**11,143 RSF**

CAN COMBINE SUITES 215, 225, 245

[RENTONOFFICEPARK.COM](http://RENTONOFFICEPARK.COM) | [KIDDER.COM](http://KIDDER.COM)

This information supplied herein is from sources we deem reliable. It is provided without any representation, warranty, or guarantee, expressed or implied as to its accuracy. Prospective Buyer or Tenant should conduct an independent investigation and verification of all matters deemed to be material, including, but not limited to, statements of income and expenses. Consult your attorney, accountant, or other professional advisor.



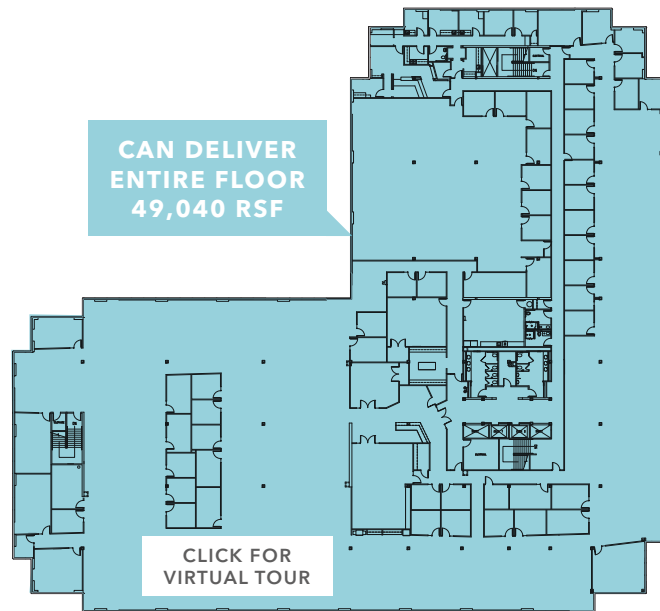
**FOR LEASE**

# Time Square

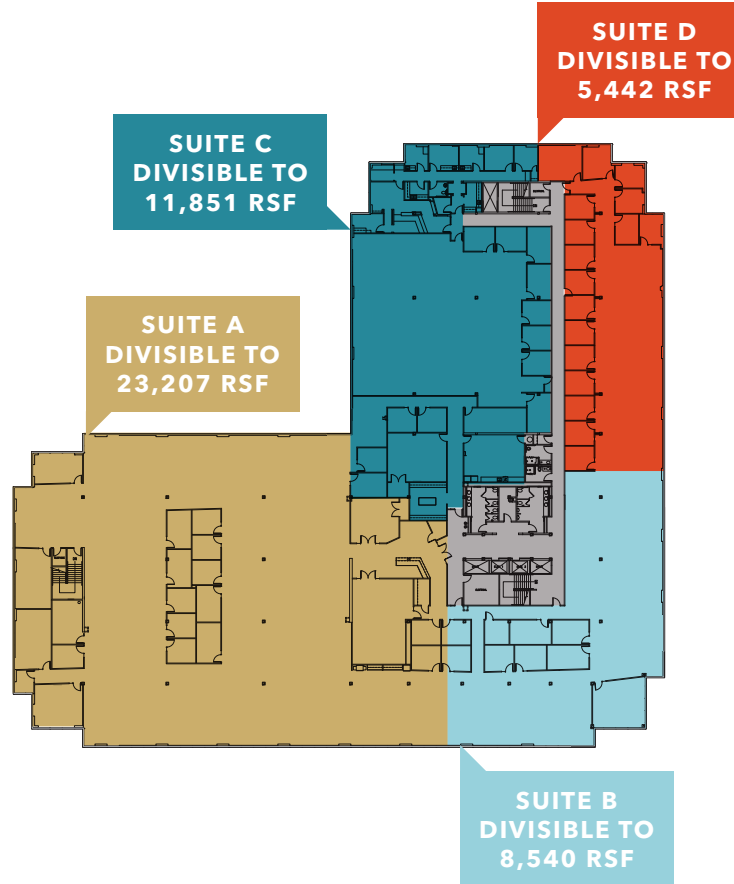
500-800 SW 39TH STREET, RENTON, WA

## Floor Plans

**BUILDING 700 - ENTIRE SECOND FLOOR**



**DIVISIBLE BUILDING 700 - SECOND FLOOR**



**49,040 RSF**

BUILDING 700, SECOND FLOOR

**3,000 RSF**

DIVISIBLE

**BRIAN CLAPP**

206.248.7316

[brian.clapp@kidder.com](mailto:brian.clapp@kidder.com)

**SPENCER CLAPP**

206.248.7427

[spencer.clapp@kidder.com](mailto:spencer.clapp@kidder.com)

[RENTONOFFICEPARK.COM](http://RENTONOFFICEPARK.COM) | [KIDDER.COM](http://KIDDER.COM)

This information supplied herein is from sources we deem reliable. It is provided without any representation, warranty, or guarantee, expressed or implied as to its accuracy. Prospective Buyer or Tenant should conduct an independent investigation and verification of all matters deemed to be material, including, but not limited to, statements of income and expenses. Consult your attorney, accountant, or other professional advisor.



**FOR LEASE**

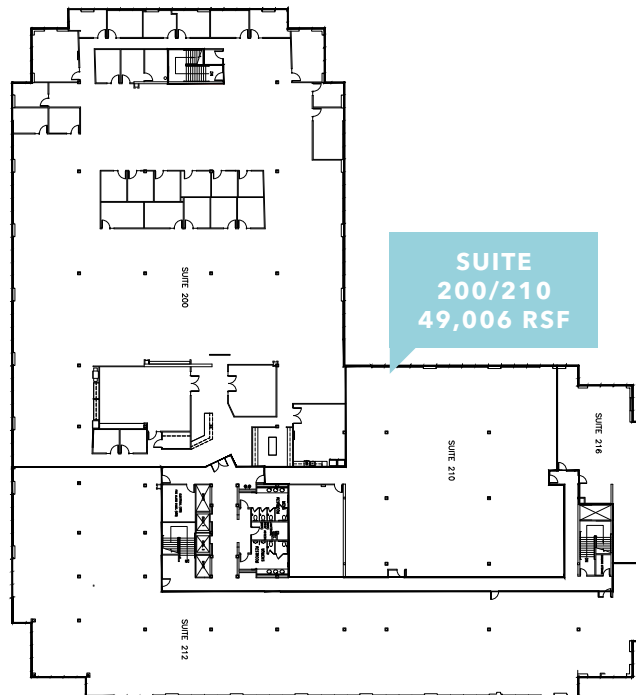
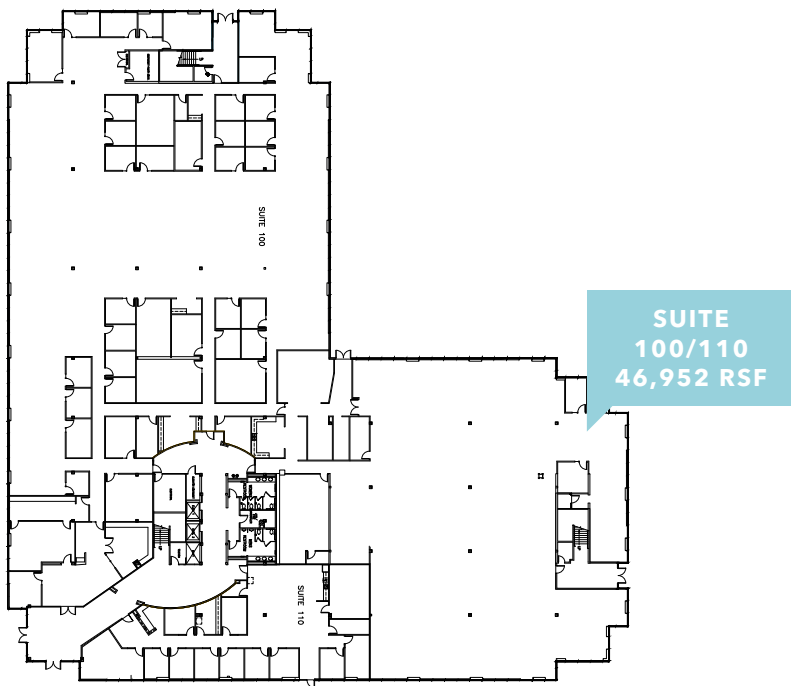
# Time Square

500-800 SW 39TH STREET, RENTON, WA

## Floor Plans

**BUILDING 700 - FIRST FLOOR AVAILABLE**

**BUILDING 700 - SECOND FLOOR AVAILABLE**



**46,952 RSF**

**BUILDING 700**

**4,000 RSF**

**DIVISIBLE**

**95,992 RSF**

**1ST & 2ND FLOORS, ENTIRE  
BUILDING AVAILABLE**

**6/2024**

**AVAILABLE**

**BRIAN CLAPP**

206.248.7316

[brian.clapp@kidder.com](mailto:brian.clapp@kidder.com)

**SPENCER CLAPP**

206.248.7427

[spencer.clapp@kidder.com](mailto:spencer.clapp@kidder.com)

[RENTONOFFICEPARK.COM](http://RENTONOFFICEPARK.COM) | [KIDDER.COM](http://KIDDER.COM)

This information supplied herein is from sources we deem reliable. It is provided without any representation, warranty, or guarantee, expressed or implied as to its accuracy. Prospective Buyer or Tenant should conduct an independent investigation and verification of all matters deemed to be material, including, but not limited to, statements of income and expenses. Consult your attorney, accountant, or other professional advisor.



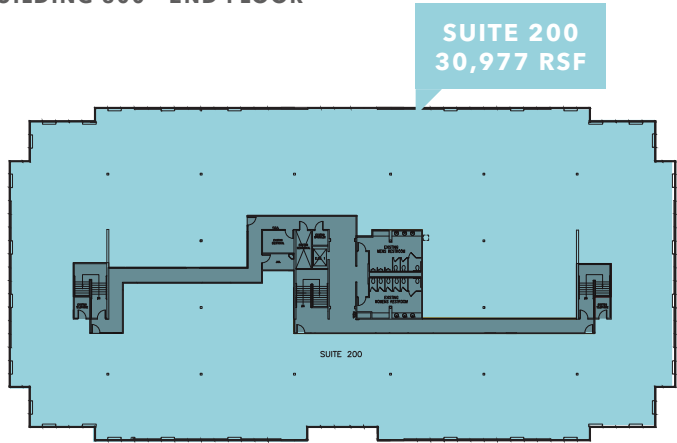
FOR LEASE

# Time Square

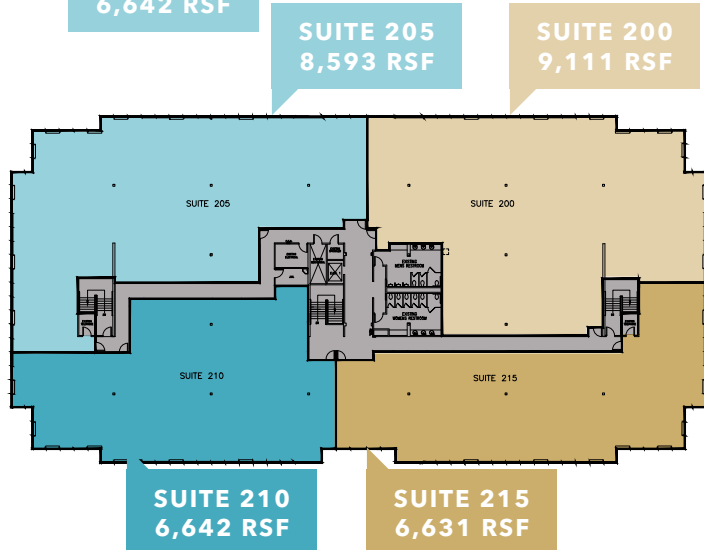
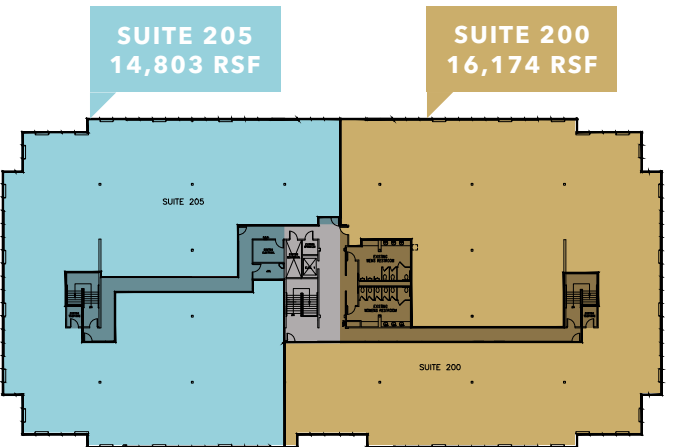
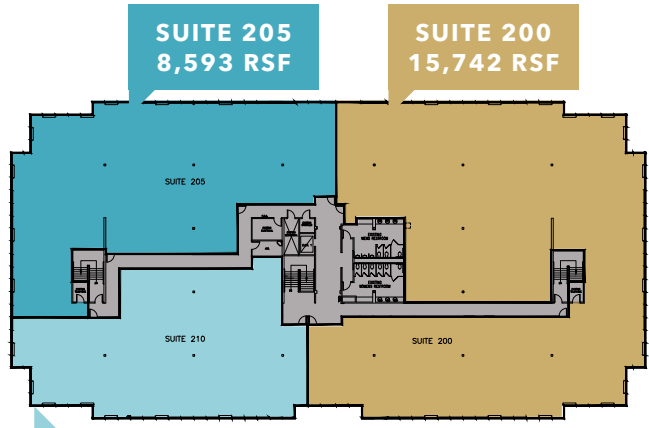
500-800 SW 39TH STREET, RENTON, WA

## Floor Plans

BUILDING 800 - 2ND FLOOR



DIVISIBLE BUILDING 800



**30,977 RSF**

BUILDING 800 (2ND FLOOR)

**6,600 RSF**

DIVISIBLE

**BRIAN CLAPP**

206.248.7316

[brian.clapp@kidder.com](mailto:brian.clapp@kidder.com)

**SPENCER CLAPP**

206.248.7427

[spencer.clapp@kidder.com](mailto:spencer.clapp@kidder.com)

[RENTONOFFICEPARK.COM](http://RENTONOFFICEPARK.COM) | [KIDDER.COM](http://KIDDER.COM)

This information supplied herein is from sources we deem reliable. It is provided without any representation, warranty, or guarantee, expressed or implied as to its accuracy. Prospective Buyer or Tenant should conduct an independent investigation and verification of all matters deemed to be material, including, but not limited to, statements of income and expenses. Consult your attorney, accountant, or other professional advisor.

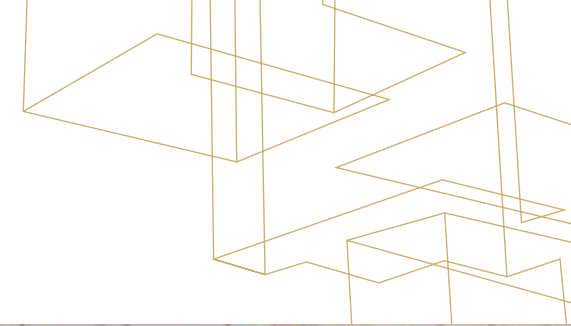




**FOR LEASE**

# Time Square

500-800 SW 39TH STREET, RENTON, WA



**BRIAN CLAPP**  
206.248.7316  
[brian.clapp@kidder.com](mailto:brian.clapp@kidder.com)

**SPENCER CLAPP**  
206.248.7427  
[spencer.clapp@kidder.com](mailto:spencer.clapp@kidder.com)

[RENTONOFFICEPARK.COM](http://RENTONOFFICEPARK.COM) | [KIDDER.COM](http://KIDDER.COM)

This information supplied herein is from sources we deem reliable. It is provided without any representation, warranty, or guarantee, expressed or implied as to its accuracy. Prospective Buyer or Tenant should conduct an independent investigation and verification of all matters deemed to be material, including, but not limited to, statements of income and expenses. Consult your attorney, accountant, or other professional advisor.

