



VIEWPOINT BUILDING

2401 ELLIOTT AVE | SEATTLE, WASHINGTON 98121

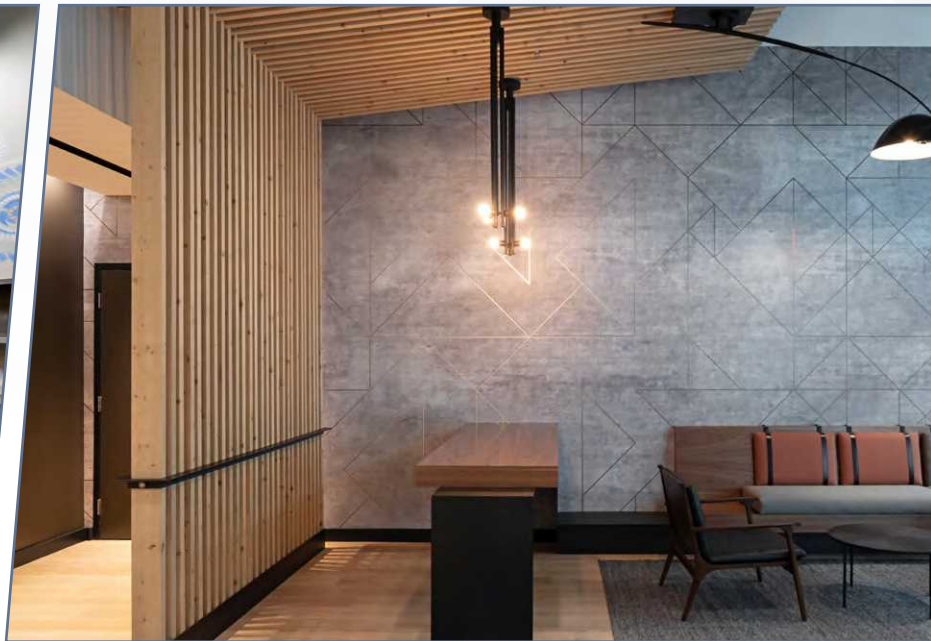


UNICO®

CBRE



VIEWPOINT BUILDING



BUILDING HIGHLIGHTS

- + Walkers Paradise (96): Two blocks from the heart of Belltown's modern shops, restaurants and amenities
- + Minutes from Seattle's historic Pike Place Market, Olympic Sculpture Park, Edgewater Hotel & revitalized waterfront
- + Riders Paradise (100): Minutes from Washington State Ferry terminals, public transit and Hwy-99
- + Secure, on-site parking garage with 359 dedicated stalls (1.2/1,000 parking ratio) with additional parking available at Bell Street Pier parking garage. More stalls available on a month-to-month basis through the Port of Seattle.
- + State of the art construction and high quality build-out
- + Located directly across from the Port of Seattle's Bell Street Pier. Great views of Puget Sound, Elliott Bay, and the Olympics

2401 ELLIOTT AVE | SEATTLE, WASHINGTON 98121



THIS IS ABOUT MORE THAN THE VIEWS **FROM** YOUR OFFICE.
WE REPRESENT A NEW POINT OF VIEW **ON** YOUR OFFICE.

BUILDING FEATURES



**MODERN LOBBY
& TENANT AMENITIES**



**UNOBSTRUCTED
WATER VIEWS**



**SECURE BIKE
STORAGE & LOCKERS**

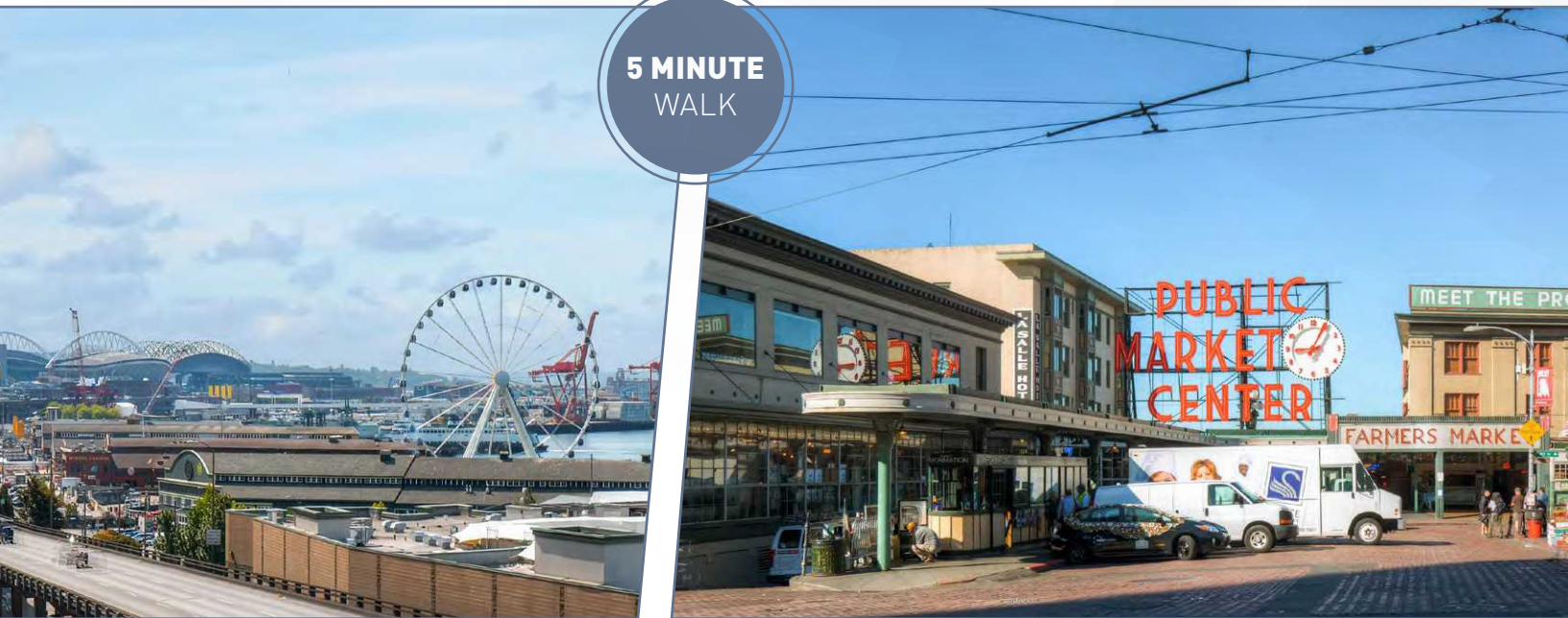


**VIEWS OF ELLIOTT BAY
AND OLYMPIC MOUNTAINS**



VIEWPOINT BUILDING

5 MINUTE
WALK



LOCATION HIGHLIGHTS

- + Direct access to Seattle's dynamic and revitalized Waterfront, Parks & Trails
- + Convenient walking distance to an abundance of restaurants and shops
- + Excellent bike lane and trail access
- + Close to Pike Place Market & Olympic Sculpture Park

NEARBY AMENITIES



FOOD + DRINK
RESTAURANTS,
CAFÉS, BAKERIES
AND BARS



SERVICES + SUPPLIES
GROCERY STORES, SPAS
AND SERVICE RETAILERS



SHOPS + ENTERTAINMENT
SHOPS AND
ENTERTAINMENT
VENUES



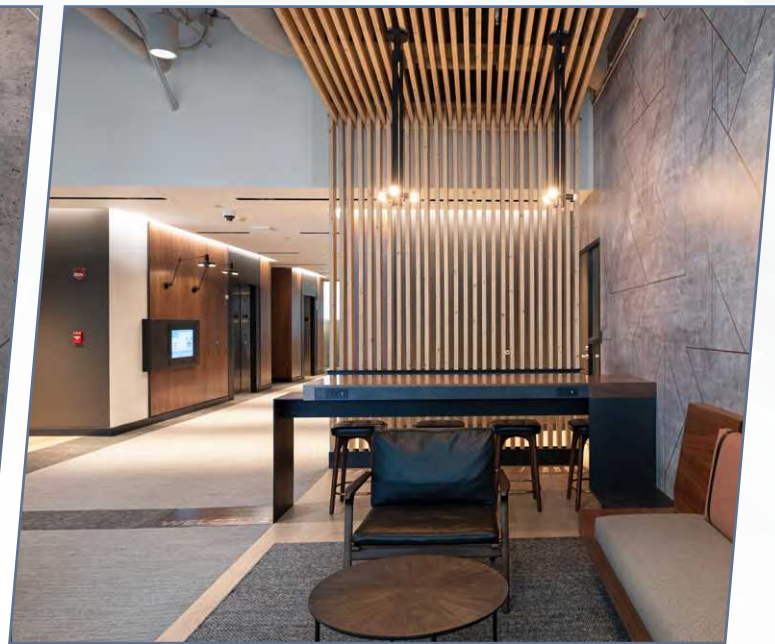
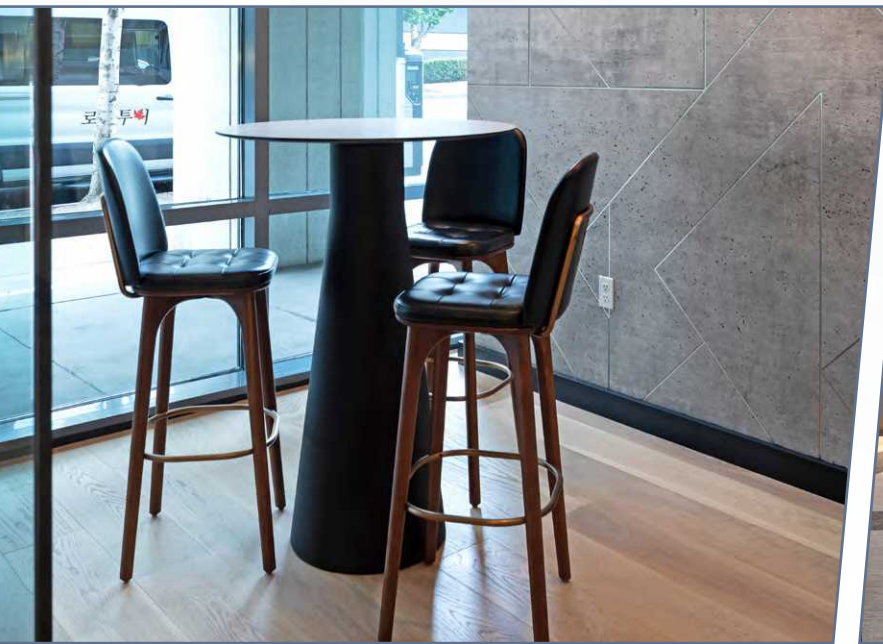
COFFEE + TEA
COFFEE SHOPS
AND ESPRESSO
BARS

2401 ELLIOTT AVE | SEATTLE, WASHINGTON 98121





VIEWPOINT BUILDING



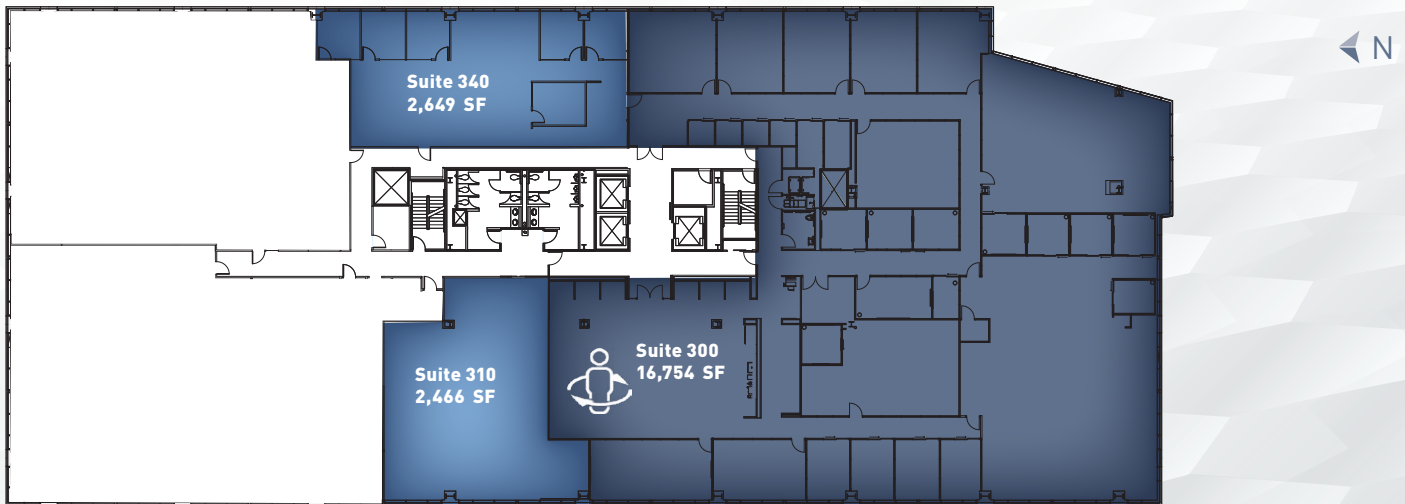
2ND FLOOR PLAN



SUITE	SIZE	AVAILABILITY	COMMENTS
200	33,729 RSF	Now	Full floor available with a mix of private offices and open space. Excellent views of Puget Sound and the Olympic Mountains.



3RD FLOOR PLAN



SUITE	SIZE	AVAILABILITY	COMMENTS
300	16,754 RSF	Now	Move-in ready spec suite with a mix of private offices and open space, large kitchen and lounge area. Excellent views of Elliott Bay and the Olympic Mountains.
310	2,466 RSF	Now	Open space facing west with excellent views of Elliott Bay and the Olympic Mountains.
340	2,649 RSF	Now	Eastern facing suite with mix of private offices and open space.



VIEWPOINT BUILDING

2401 ELLIOTT AVE | SEATTLE, WASHINGTON 98121



FOR MORE INFORMATION:

SCOTTA ASHCRAFT

+1 206 292 6063

scotta.ashcraft@cbre.com

NICK CARONEN

+1 206 292 6039

nick.caronen@cbre.com

CBRE, INC.

1420 5th Ave., Suite 1700
Seattle, WA 98101



© 2022 CBRE, Inc. All rights reserved. This information has been obtained from sources believed reliable, but has not been verified for accuracy or completeness. You should conduct a careful, independent investigation of the property and verify all information. Any reliance on this information is solely at your own risk. CBRE and the CBRE logo are service marks of CBRE, Inc. All other marks displayed on this document are the property of their respective owners. Photos herein are the property of their respective owners and use of these images without the express written consent of the owner is prohibited. 8-28-2023CH