

## BROKER COMMISSION

\$2.50/SF/YR for sublease executed  
prior to December 31, 2023

A large, multi-story classical building with many windows, some of which are lit up. It is located on a city street with other buildings in the background.

# For Sublease

## Dexter Horton Building

710 Second Avenue | Seattle, WA 98104

### AVAILABLE SPACE AND FEATURES

- Suite 310: 4,054 RSF
- Lease rate: \$25.00/RSF/YR, full service
- Available: 30 days notice
- Master lease expires February 28, 2026
- Furniture available
- Great location adjacent to Pegasus Coffee Bar
- Full kitchen, bike storage, showers, and building conference rooms

### Morgan Burbridge

Senior Vice President

+1 206 915 3725

[morgan.burbridge@colliers.com](mailto:morgan.burbridge@colliers.com)

601 Union Street

Suite 5300

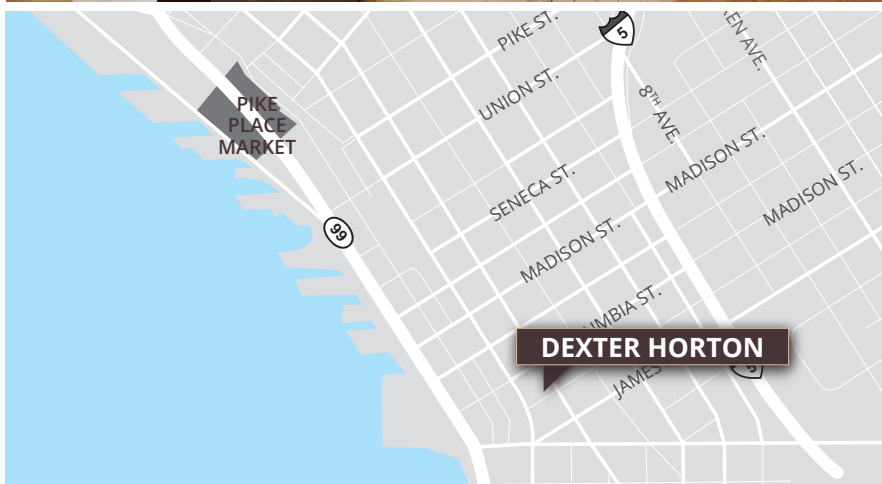
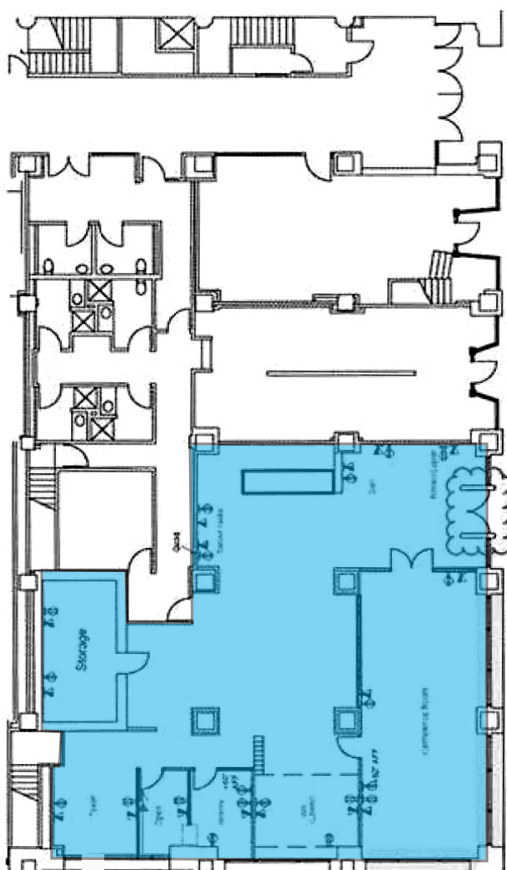
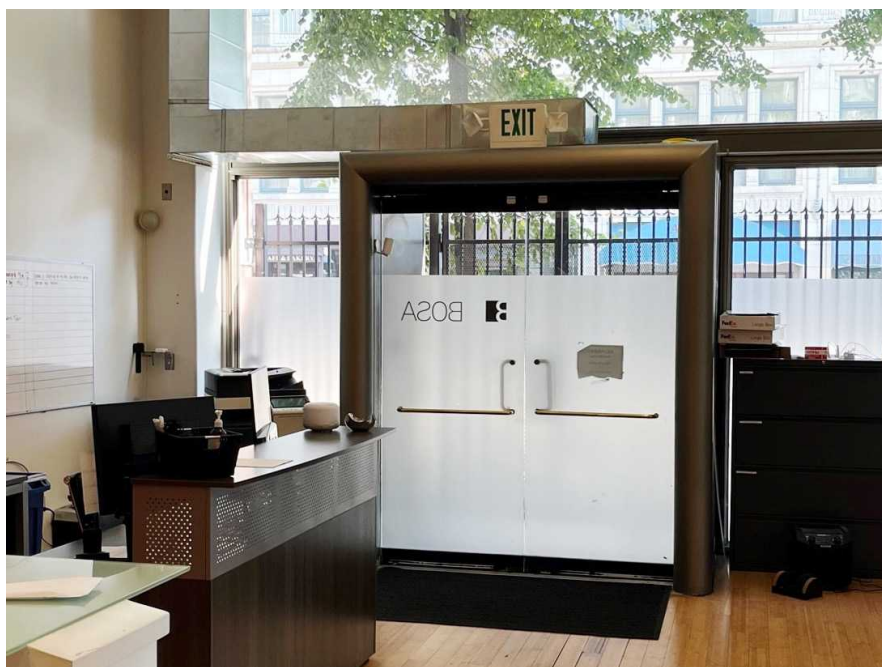
Seattle, WA 98101

P: +1 206 223 0866

[colliers.com](http://colliers.com)



# For Sublease



**Morgan Burbridge**

Senior Vice President

+1 206 915 3725

[morgan.burbridge@colliers.com](mailto:morgan.burbridge@colliers.com)

601 Union Street

Suite 5300

Seattle, WA 98101

P: +1 206 223 0866

Copyright © 2023. Colliers International. Information herein has been obtained from sources deemed reliable, however its accuracy cannot be guaranteed. The user is required to conduct their own due diligence and verification.